

terminology

**MIDTERM EXAM
WATEEN**

إعداد:



Q1 The root choledoch/o is pertaining to which organ?

Select one:

- a. The bile vessels
- b. The gall bladder
- c. The liver
- d. The bile duct
- e. The stomach

Q2 As regard Meiosis, which of the following statements is incorrect?

Select one:

- a. Produce two daughter cells
- b. Each daughter cell has 23 chromosomes
- c. Occurs only in gametes
- d. Produce Four daughter cells
- e. Consists of two divisions separated by a resting phase

Q3 The only type of muscle tissue which shows no striations is ?

Select one:

- a. Skeletal muscle
- b. Smooth muscle
- c. Cardiac muscle
- d. Voluntary muscle
- e. Multinucleated muscle

Q4 On either side of the trachea?

Select one:

- a. Pancreas
- b. Parathyroid
- c. Pituitary
- d. Thyroid
- e. Testis



Q5 The prefix is of a word?

Select one:

- a. At the beginning
- b. The root
- c. At the end
- d. The vowel attached to the root
- e. The combining form

Q6 In hyperparathyroidism, excessive production of PTH results in degeneration of the ?

Select one:

- a. Arteries
- b. Muscles
- c. Bones
- d. Nerves
- e. Heart

Q7 What is the cell organelle that is responsible for Synthesis of proteins and metabolism of fat within the cell?

Select one:

- a. Lysosomes
- b. Ribosomes
- c. Nucleus
- d. The Golgi apparatus
- e. Mitochondria

Q8 rrhea?

Select one:

- a. Give a medical term meaning visual examination of the thorax
- b. Create a medical term meaning excessive flow of a fluid
- c. Create a medical term referring to a fetus before labor
- d. Give the medical term meaning excessive discharge of blood
- e. Give a medical term meaning visual examination of the ear



Q9 Diabetes and other hormone imbalances?

Select one:

- a. Give a prefix meaning normal, good
- b. Give a suffix meaning normal conditions
- c. Pinpoint hemorrhages on the skin
- d. A clouding of the lens of the eye
- e. An endocrinologist treats patients who suffer from

Q10 Study of?

Select one:

- a. -metry
- b. -rraphy
- C. -logy
- d. ~itis
- e. —ectomy

Q11 A gland that produces a hormone which assists in the development and maturation of immune cells?

Select one:

- a. Testes
- b. Thymus
- c. thyroid
- d. Parathyroid
- e. Pituitary

Q12 The inflammation of the intestine that is associated by bloody diarrhea and most probably occur after ingestion of contaminated food or water? This condition is known as?

Select one:

- a. Dysentery
- b. Dyspepsia
- c. Cholelithiasis
- d. Ascites

/e. Dysphagia



Q13 The pleural form of appendix is?

Select one:

- a. Appendeces
- b. Appendecis
- c. Appendces
- d. Appeneeces
- e. Appendices

Q14 A doctor specialized in the branch of medicine that deals with the rectum and anus is known as?

Select one:

- a. Physician
- b. Hepatologist
- c. Dentist
- d. Proctologist
- e. Gastrologist

Q15 Which of the following is a cause of Addison' disease?

Select one:

- a. Insufficient secretion of corticoid and aldosterone
- b. Lack of thyroid hormone secretion
- C. Excessive production of cortisol
- d. Excessive production of parathyroid hormone
- e. Excessive production of pituitary

Q16 Poly-? :

Select one:

- a. The suffix for voice is E
- b. Give the prefix meaning: before
- c. Give a prefix meaning many, much
- d. Give the suffix meaning: control, stop
- e. Give the combining vowel meaning: little, low



Q17 stenosis?

Select one:

- a. The word root meaning nerve root E
- b. Give the suffix meaning nourishment, development
- c. Give a suffix meaning narrowing
- d. Give the meaning of the combining form episi/o
- e. Give a suffix meaning widening

Q18 The group of drugs that decreases GIT spasm are called?

Select one:

- a. Antispasmodics
- b. Laxatives
- C. Antiemetic
- d. Antacids
- e. Antidiarrheal

Q19 Suffix?

Select one:

- a. Give the medical term which means drooping kidney
- b. When defining a medical term one should usually start by its defining
- C. Give the medical term meaning closure of the wound
- d. Give a medical term meaning examination of the nose
- e. Give a medical term meaning pain in Joints

Q20 The adrenal glands are located on top of the ?

Select one:

- a. Pituitary
- b. Brain
- c. Trachea
- d. Stomach
- e. Kidneys



**Q21 A combining form is? <
t**

Select one:

- a. A prefix and a consonant
- b. A root and a prefix
- c. A word root and a combining vowel
- d. Two roots together
- e. Suffix, prefix and Word root

**Q22 The insertion of thin lighted tube through
the abdominal wall into the abdominal cavity
to inspect the inside of abdomen?**

Select one:

- a. Laparoscopy
- b. Cholecystectomy
- c. Appendectomy
- d. Jejunostomy
- e. Manometry

**Q23 The plane that runs lengthwise from side to
side, dividing the body into ventral and dorsal?**

Select one:

- a. Median plane
- b. Anatomical plane
- c. Transverse plane
- d. Frontal plane
- e. Sagittal plane

**Q24 What is the term for the processes by which
the body absorbs and uses nutrients?**

Select one:

- a. Homeostasis
- b. Electrolytes
- c. Metabolism
- d. Circadian rhythm
- e. Hemostasis



Q25 The condition of inflammation of the liver causing it to become hard and associated with its dysfunction?

Select one:

- a. Vomiting
- b. Cirrhosis
- C. Appendicitis
- d. Esophagitis
- e. Colitis

Q26 If excess water removed from the stool and it becomes hard and difficult to pass. This condition is called?

Select one:

- a. Tongue—tied
- b. Diarrhea
- c. Constipation
- d. Diverticulosis
- e. Steatorrhea

Q27 If the structure found pertaining to the outer wall of the body cavity. It is described to be?

Select one:

- a. Superficial
- b. Inversion
- c. Parietal
- d. Proximal
- e. Visceral

Q28 Which of the following is the term for abnormally large breasts in men?

Select one:

- a. Gynander
- b. Gynecomania
- c. Gynecomastia
- d. Gynephobia
- e. Gynoplastics



Q29 The main part of a medical term is the?

Select one:

- a. Prefix
- b. Combining form.
- c. Word root.
- d. Suffix.
- e. Combining vowel

Q30 Disease Hormone?

Select one:

- a. Diabetes mellitus Glucagon
- b. Diabetes insipidus Insulin
- c. Hypoparathyroidism Thyroxine
- d. Infertility Adrenaline
- e. Acromegaly Growth hormone

Q31 The type of tissue that lines the surface of serous membranes, such as the pleura, pericardium, and peritoneum is called?

Select one:

- a. Mesothelium
- b. Endothelium
- C. Squamous epithelium
- d. Adipose tissue
- e. Columnar epithelium

Q32 Pituitary?

Select one:

- a. Give the medical term meaning: inflammation of a sweat gland
- b. A record of the electrical activity of the brain is a/an
- c. Give the medical term for inflammation of the renal pelvis
- d. Gigantism results from improper hormone function of this gland
- e. Goiter results from improper hormone function of this gland



Q33 Oxytocin is a hormone that stimulates during childbirth and milk production when a woman is breastfeeding?

Select one:

- a. Muscle spasms
- b. Uterine contractions
- C. Urination
- d. Respiration
- e. Digestion

Q34 If the gland secretes its products through excretory ducts to the surface of an organ. This gland is called?

Select one:

- a. Pineal
- b. Exocrine
- c. Endocrine
- d. Autocrine
- e. Paracrine

Q35 The Transverse plane divides the body into which compartments?

Select one:

- a. Superficial and deep
- b. Superior and inferior
- c. Right and left sides
- d. Anterior and posterior
- e. Parietal and visceral

Q36 The is the part of nervous system that produces hormones to affect indirectly the behavior of other endocrine glands?

Select one:

- a. Adrenal gland
- b. Thalamus
- C. Pituitary gland
- d. Thyroid gland
- e. Hypothalamus



Q37 A condition that include the loss of the desire to eat that can result from physical or psychological causes?

Select one:

- a. Anorexia
- b. Dyspraxia
- C. Dysphagia
- d. Polyphagia
- e. Dyspepsia

Q38 It is the dorsal cavity that holds the brain, it is called?

Select one:

- a. Spinal cavity
- b. Cranial cavity
- c. Thoracic cavity
- d. Abdominal cavity
- e. Pelvic cavity

Q39 cyanosis?

Select one:

- a. Build a medical term from word parts that means pertaining to yellow color
- b. Give the medical term meaning: abnormal condition of death
- c. Build a medical term from word parts that means: abnormal condition of blue
- d. Give a medical term which means producing an ovum
- e. Give the medical term meaning: a condition of disease

Q40 There is another name of the gastrointestinal system , It is?

Select one:

- a. Upper GI
- b. Absorptive system
- c. Colon
- d. Alimentary tract
- e. Lower GI



Q41 The passage of dark colored stool due to the presence of blood is called?

Select one:

- a. Halitosis
- b. Mal absorption syndrome
- C. Melena
- d. Obstipation
- e. Hematemesis

Q42 the master gland, has two lobes?

Select one:

- a. Thyroid
- b. Hypothalamus
- c. Pituitary
- d. Adrenal
- e. Gonads

Q43 _ is increased calcium in the blood?

Select one:

- a. Hyperkalemia
- b. Leukemia
- c. Hypercalcemia
- d. Calcimia
- e. Calciuria

Q44 A bronchoscopy involves ?

Select one:

- a. Using an instrument to look into the bronchi.
- b. Removing a mass from the bronchus.
- c. Incising an abnormality of the bronchi.
- d. Using X-ray to diagnose a condition of the bronchi
- e. Using an instrument to look into the stomach.



Q45 The root gloss/o is pertaining to which organ?

Select one:

- a. The cheek
- b. The intestine
- c. The tongue
- d. The mouth
- e. The stomach

Q46 It is accumulation of protein containing fluid in the abdominal cavity. It is called?

Select one:

- a. Cholecystectomy
- b. Ascites
- c. Cholangitis
- d. Cholelithiasis
- e. Choledocholithiasis

Q47 During times of stress, the hormones epinephrine and norepinephrine are secreted by the glands?

Select one:

- a. Parathyroid
- b. Thyroid
- c. Adrenal cortex
- d. Pituitary
- e. Adrenal medulla

Q48 The word enteropathy means disease in?

Select one:

- a. The intestine
- b. the tongue
- c. the stomach
- d. the liver
- e. the esophagus



Q49 A localized or general condition of excessive fluid retention and swelling in body tissues is known as ?

Select one:

- a. Diabetes
- b. Hyperglycemia
- c. Hypoglycemia
- d. Edema
- e. Hyponatremia

Q50 A localized or general condition of excessive fluid retention and swelling in body tissues is known as ?

Select one:

- a. Diabetes
- b. Hyperglycemia
- c. Hypoglycemia
- d. Edema
- e. Hyponatremia

Q51 Inadequate calcium levels may produce a nervous excitability and muscle spasms known as ?

Select one:

- a. Acromegaly
- b. Myxedema
- c. Cretinism
- d. Tetany
- e. Dwarfism

Q52 They are substances that loosen stools and increase bowel movements. They are used to treat and prevent constipation?

Select one:

- a. Antispasmodics
- b. Laxatives
- c. Antiemetic
- d. Antacids
- e. Antidiarrhea



Q53 Which of the following statements best describes the Trendelenburg's position?

Select one:

- a. The head of bed raised, knees slightly flexed
- b. Lying flat with the head lower than the body or legs
- c. Lying flat with the head higher than the body or legs
- d. The body is erect and the eyes are looking forward. The upper limbs hang to the sides, with the palms facing forward. The lower limbs are parallel, with toes pointing straight ahead
- e. Lying on the back with the hips and knees flexed and the thighs abducted and externally rotated

Q54 The system that protects the body and helps regulate body temperature and include skin, hair and nails?

Select one:

- a. The hemopoietic system
- b. The nervous system
- c. The cardiovascular system
- d. The integumentary system
- e. The immune system

Q55 Select the incorrect matching of the following medical terms?

Select one:

- a. Hirsutism excessive amount of hair
- b. Pheochromocytoma tumor of adrenal medulla
- c. Gynecomastia breast development in a male
- d. IDDM type II diabetes mellitus
- e. Exocrine secretes into a duct



Q56 Mouth?

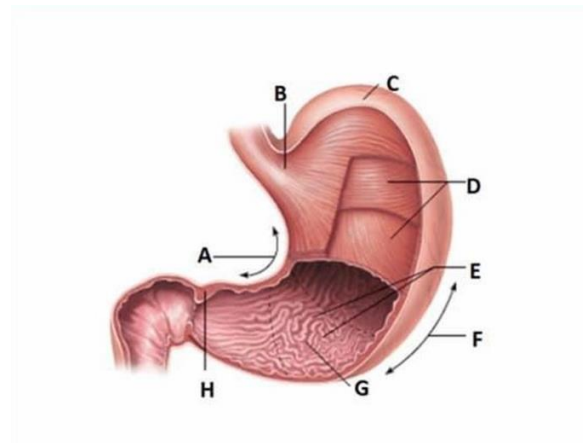
Select one:

- a. The word part hat/o means
- b. The suffix -opia means
- C. The word root audi means
- d. The combining form stomat/o
- e. The word part kal/i means

Q57 Which of the following cell organelles is called the powerhouse of the cell?

Select one:

- a. Nucleus
- b. Lysosomes
- C. Chloroplast
- d. Mitochondria
- e. Endoplasmic reticulum

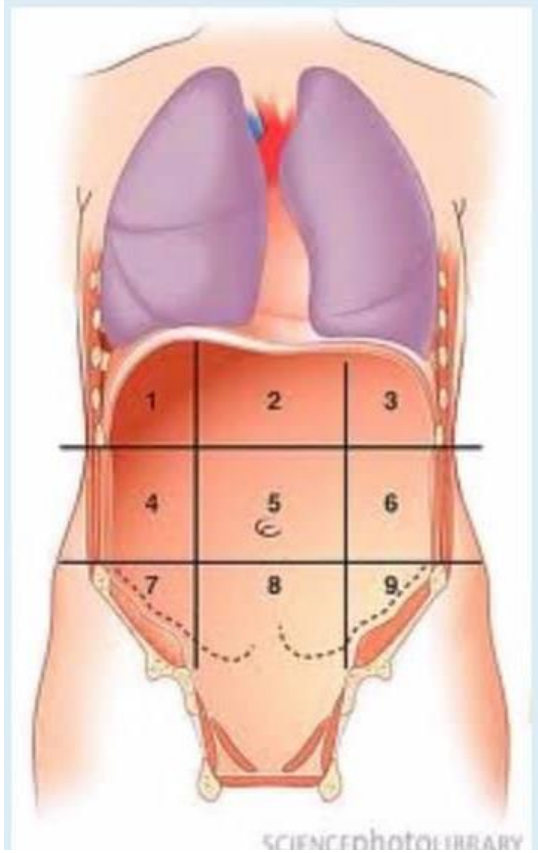


Q58 According to your information, what is the name of the structure labelled by letter (F) in the following figure?

Select one:

- a. Lesser curvature
- b. Fundus of stomach
- c. Pyloric sphincter
- d. Greater curvature
- e. Esophageal sphincter

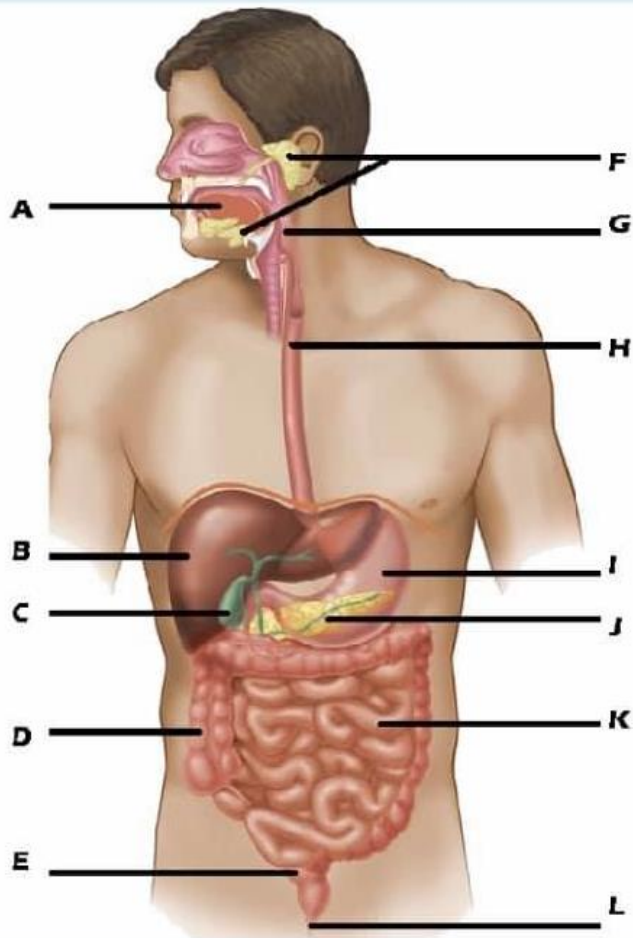




Q59 Look at this diagram, the region (7) is called?

Select one:

- a. Right hypochondriac region
- b. Right inguinal region
- C. Umbilical region
- d. Hypogastric region
- e. Epigastric region



Q60 In this diagram, the structure (C) refers to which of the following?

Select one:

- a. Pancreas
- b. Esophagus
- c. Liver
- d. Gall bladder
- e. Small intestine