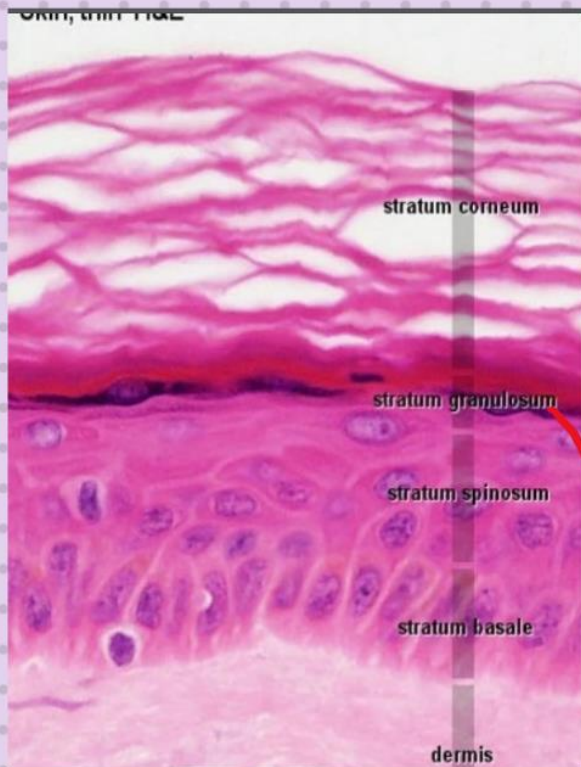


_stratum lucidum is full of immature soft keratin
_only present in thick skin

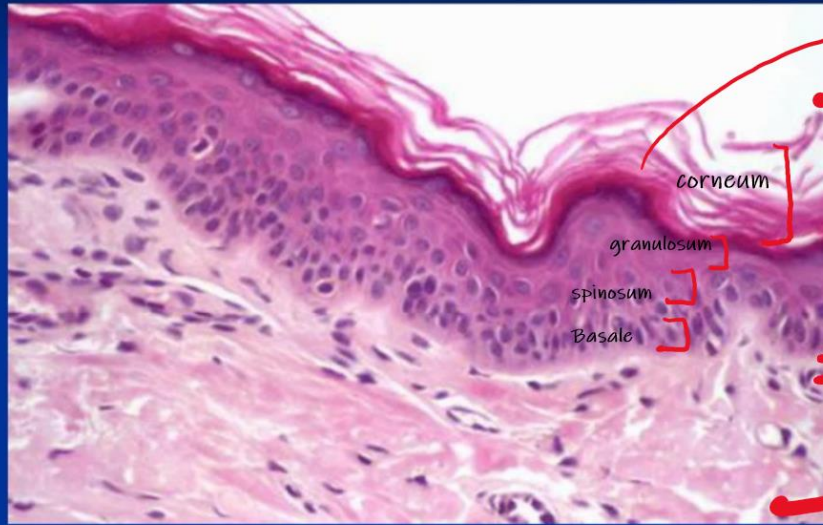


stratum granulosum is thinner than stratum spinosum

thin skin

طبيعة السؤال: identify this section or this layer

F. Stratum Corneum – Thin Skin



corneum

granulosum

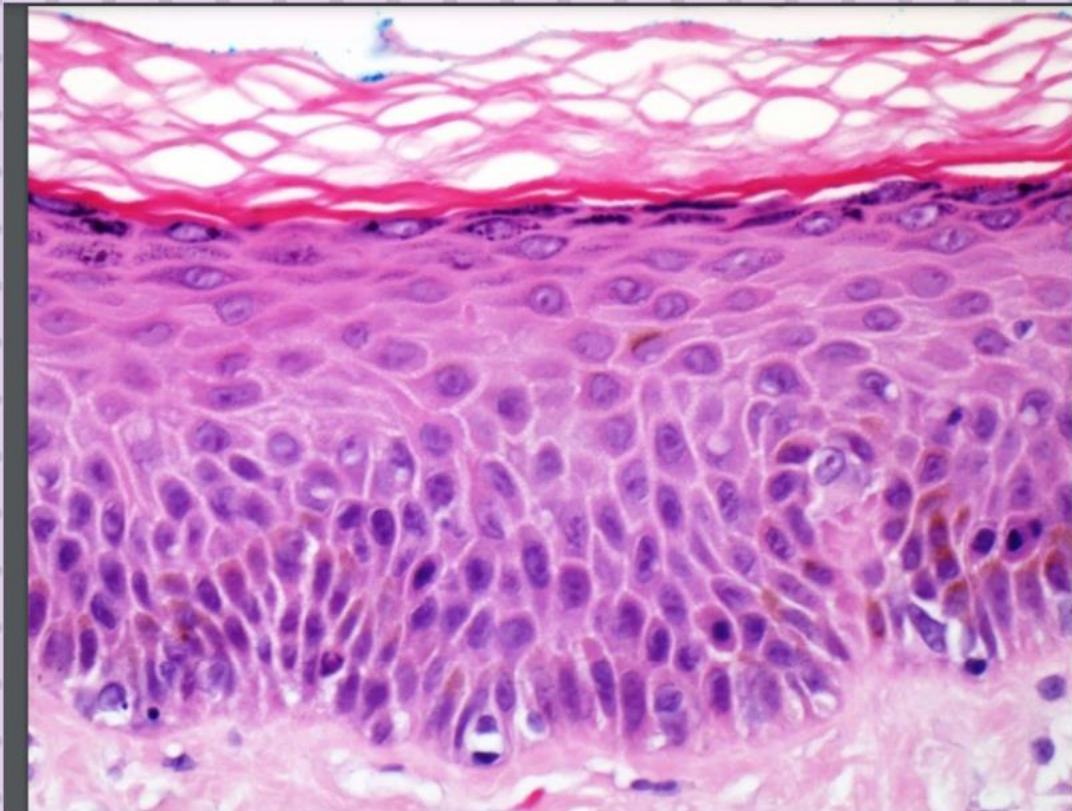
spinosum

Basale

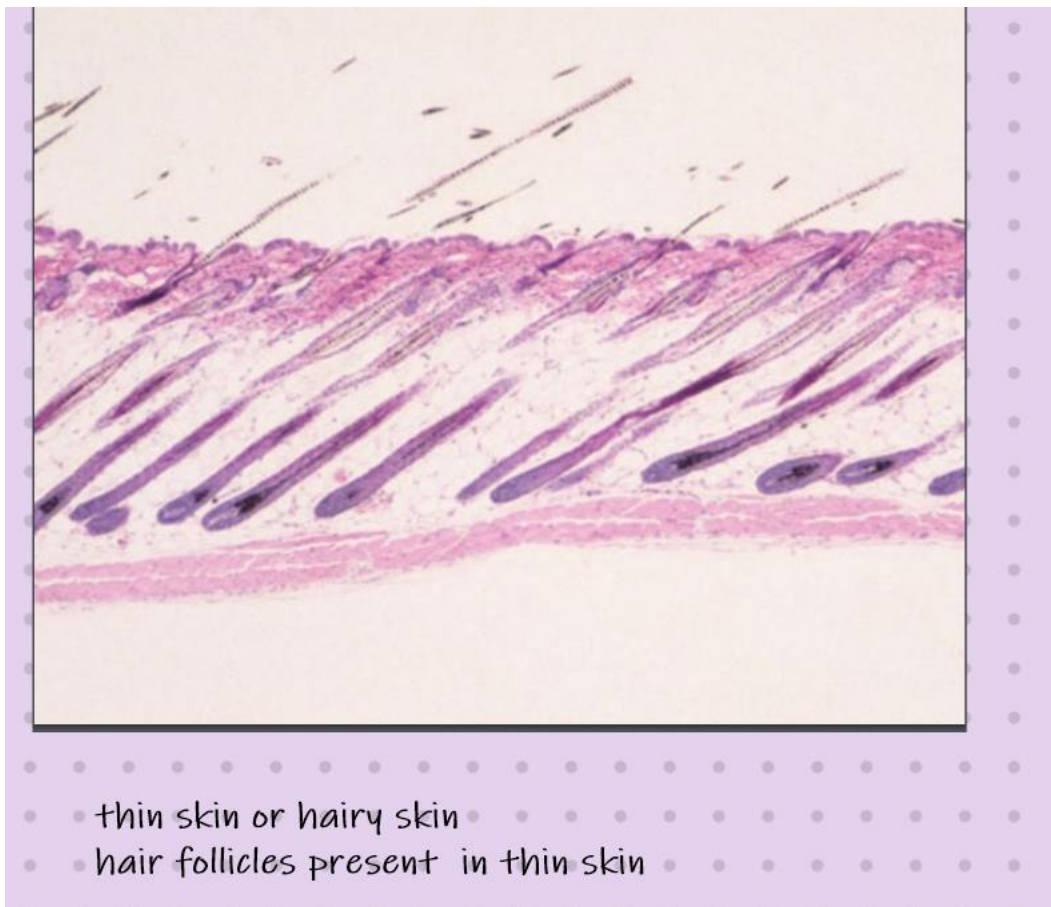
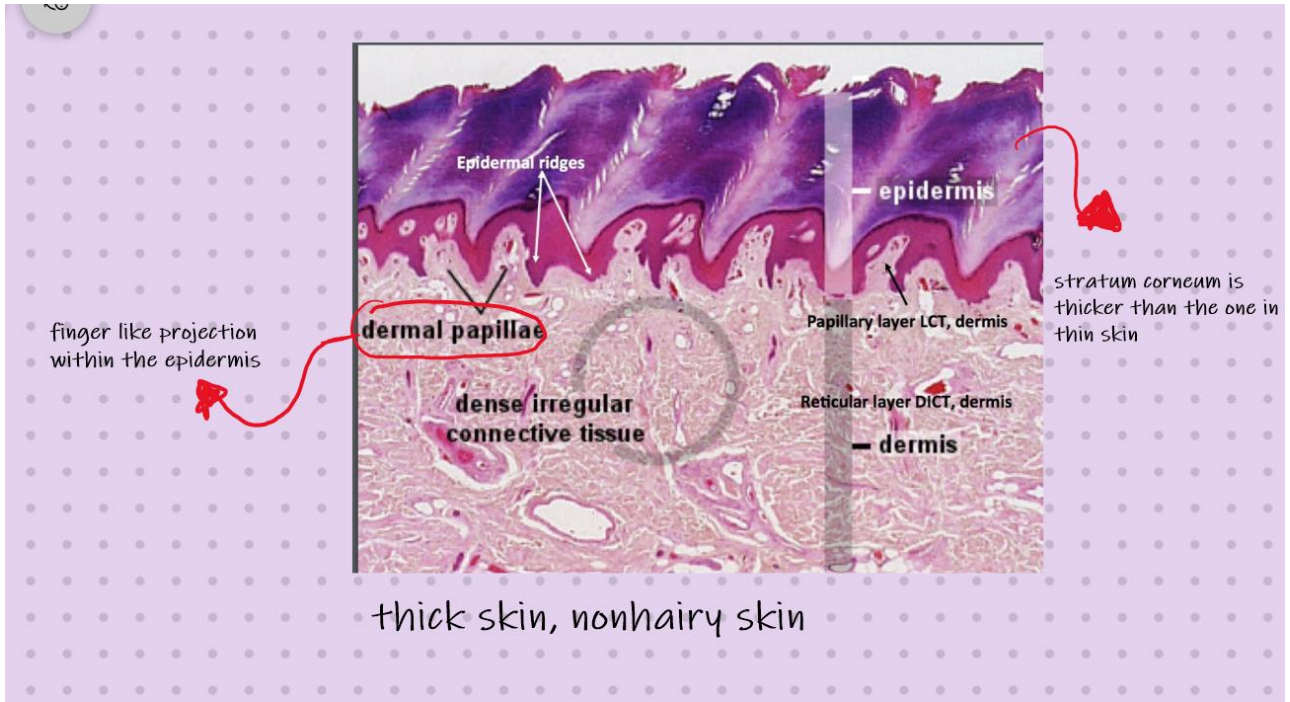
thin outer
Layer

epidermis

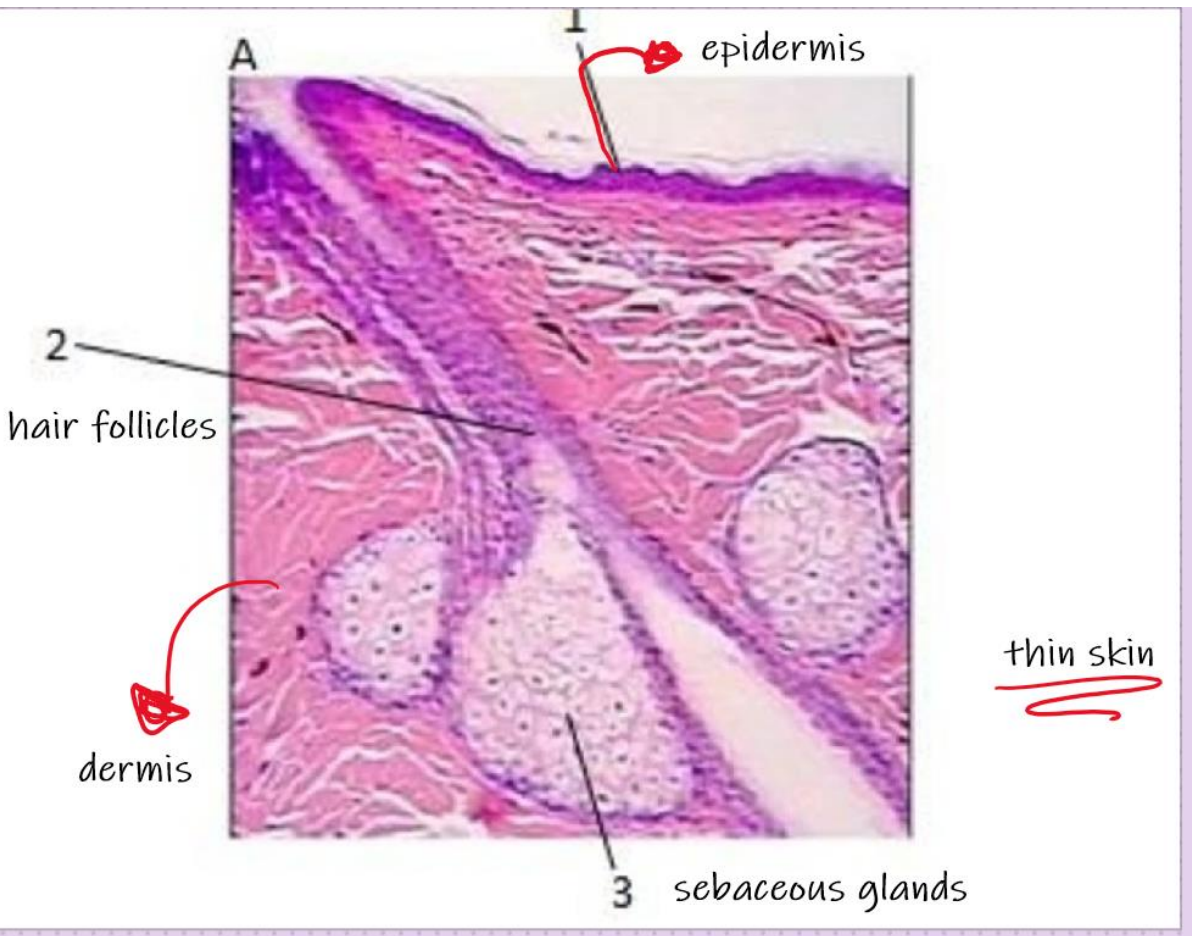
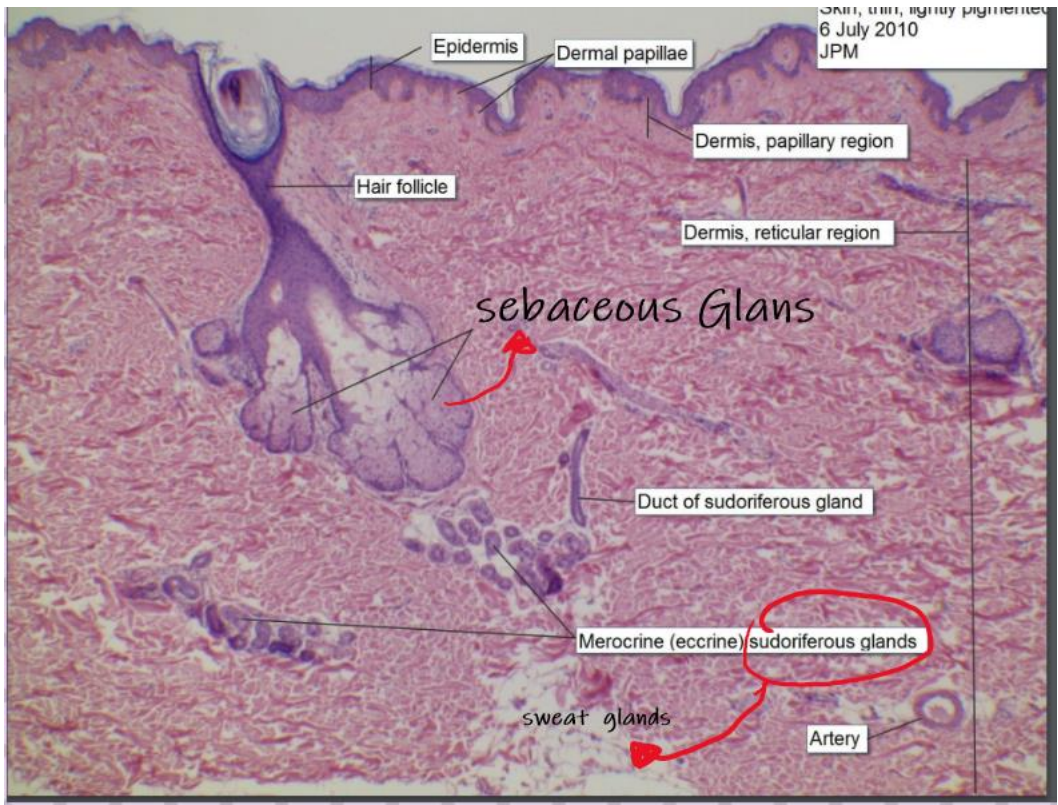
dermis



thin skin



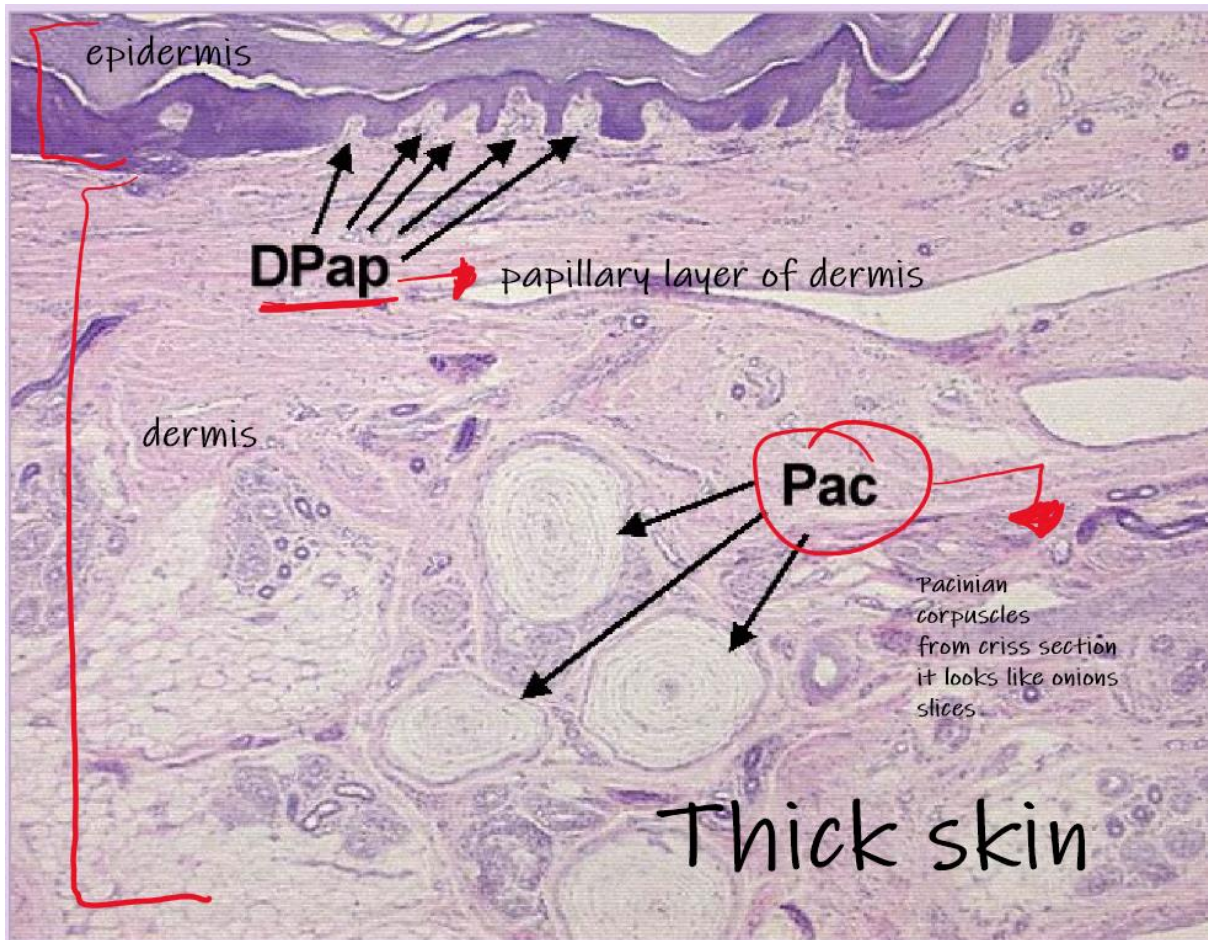


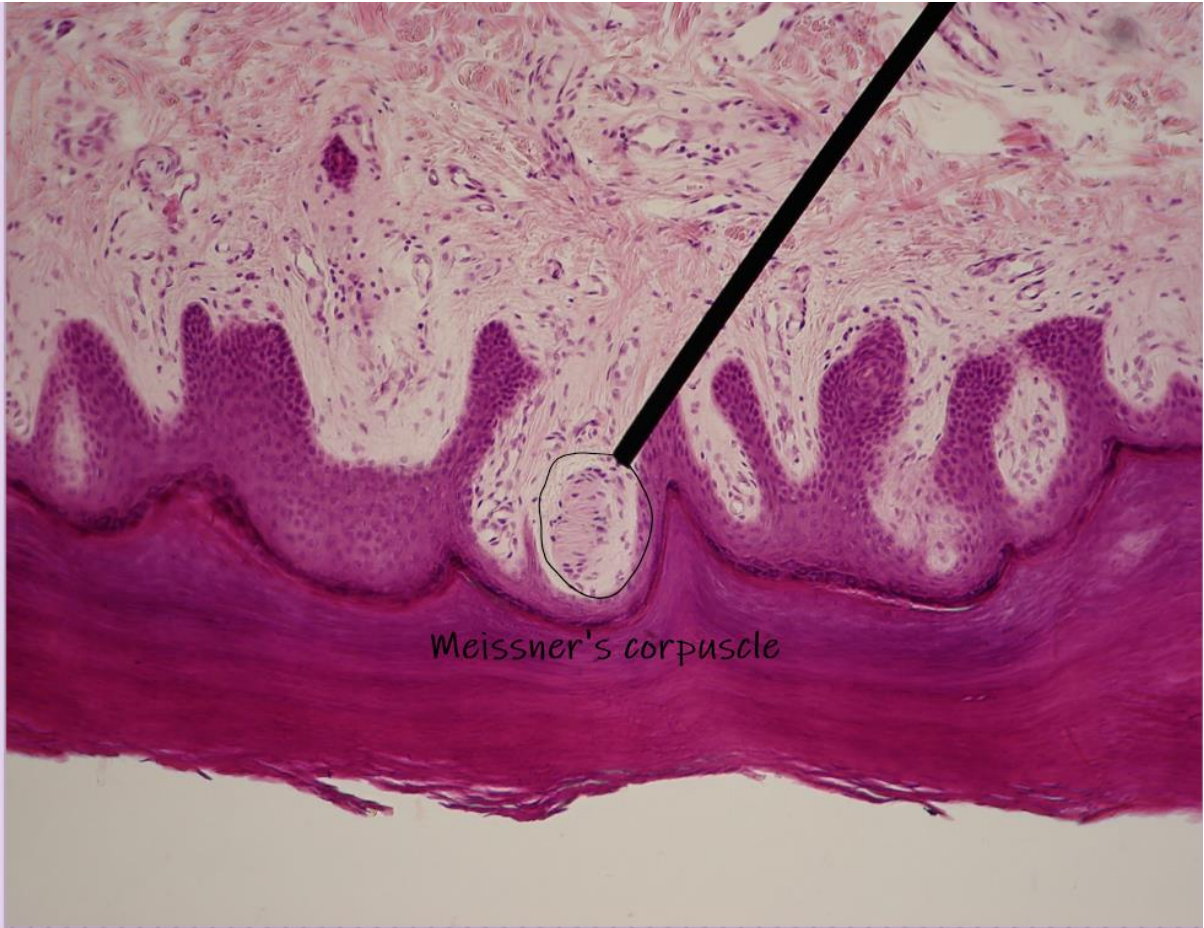


Meissner's Corpuscle

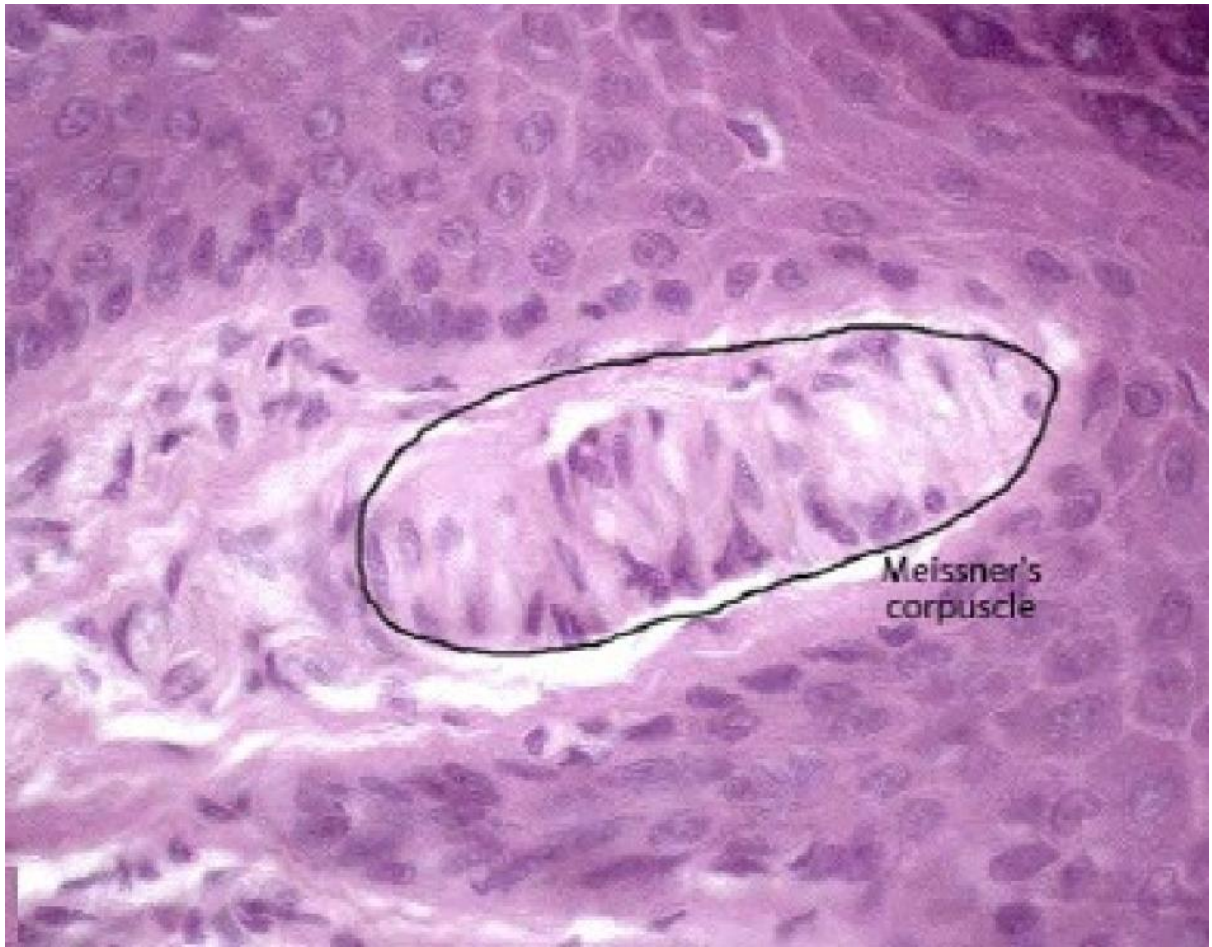
Found in the papillary layer of dermis







Meissner's corpuscle



Meissner's
corpuscle

