

THE PERITONEUM

Dr. Aiman Qais Afar
Surgical Anatomist

College of Medicine / University of Mutah
2021-2022

Tuesday 5 April 2022

PERITONEUM

General Arrangement

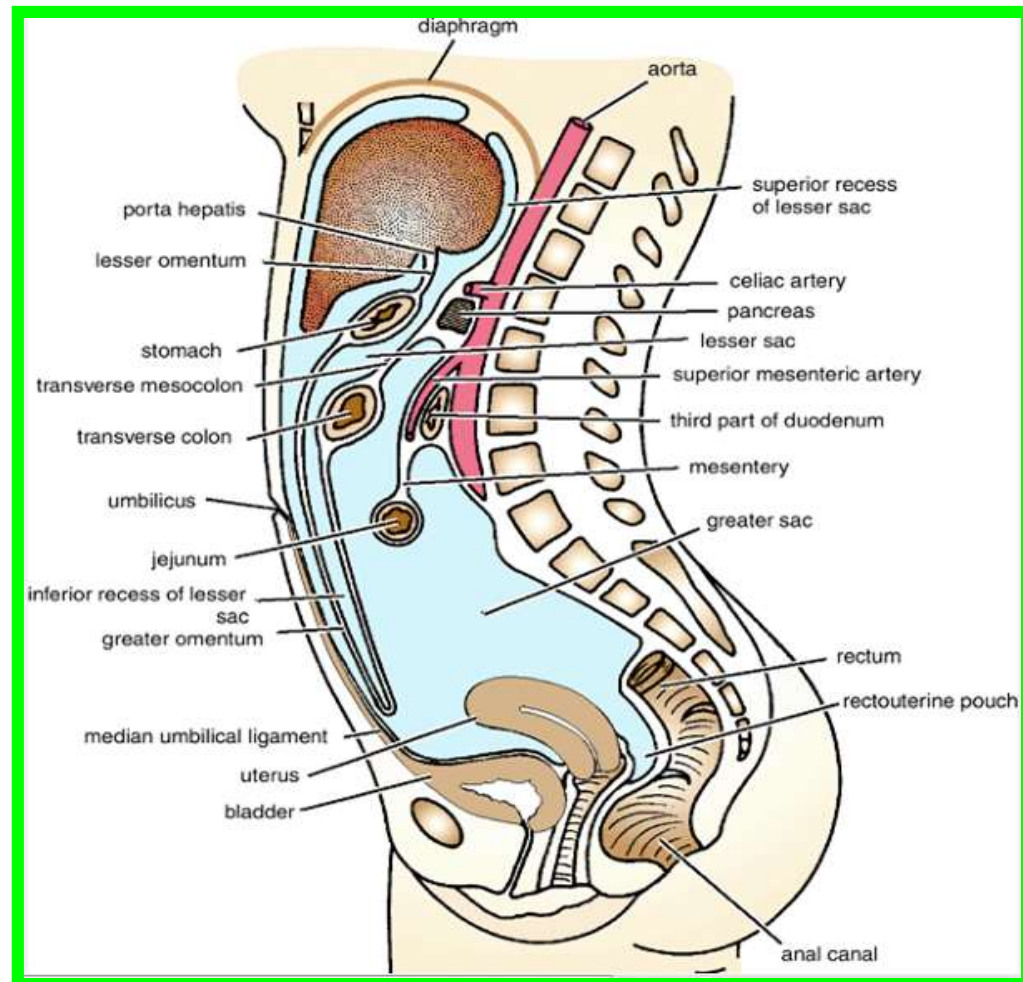
Dr. Aiman Qais Afar
Tuesday 5 April 2022

❖ The peritoneum is a thin serous membrane that lines the walls of the abdominal and pelvic cavities and clothes the viscera .

❖ The peritoneum can be regarded as a balloon against which organs are pressed from outside

❖ The parietal peritoneum lines the walls of the abdominal and pelvic cavities

❖ The visceral peritoneum covers the organs.

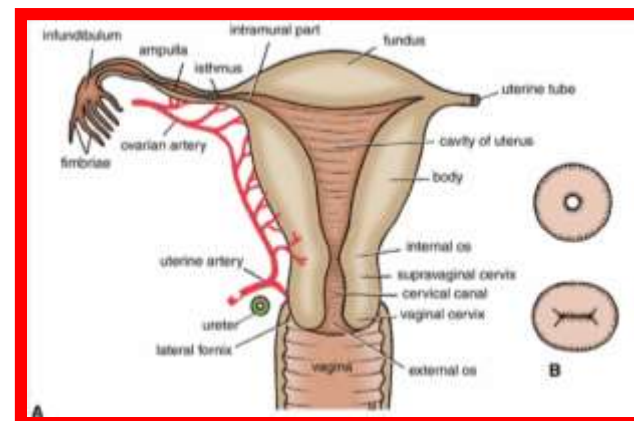
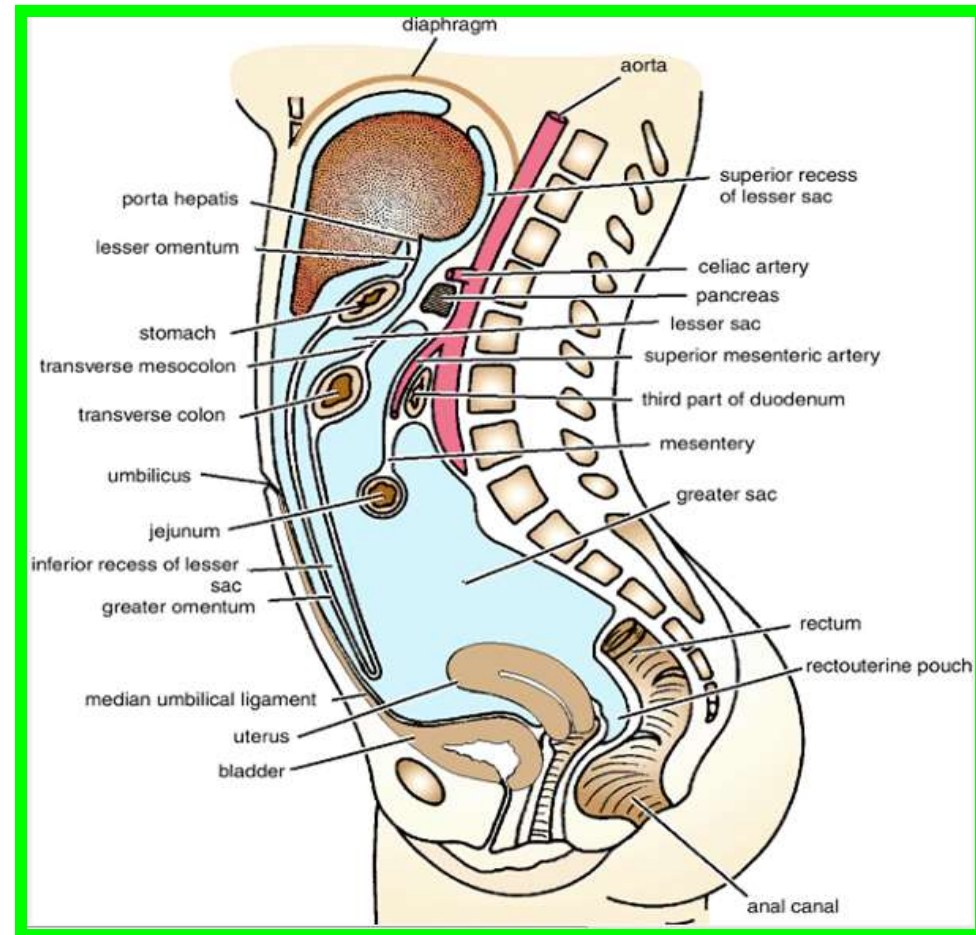


PERITONEUM

General Arrangement

❖ The potential space between the parietal and visceral layers, (which is in effect the inside space of the balloon), is called the peritoneal cavity.

❖ In males, this is a closed cavity,
 ❖ In females, there is communication with the exterior through the uterine tubes, the uterus, and the vagina



PERITONEUM

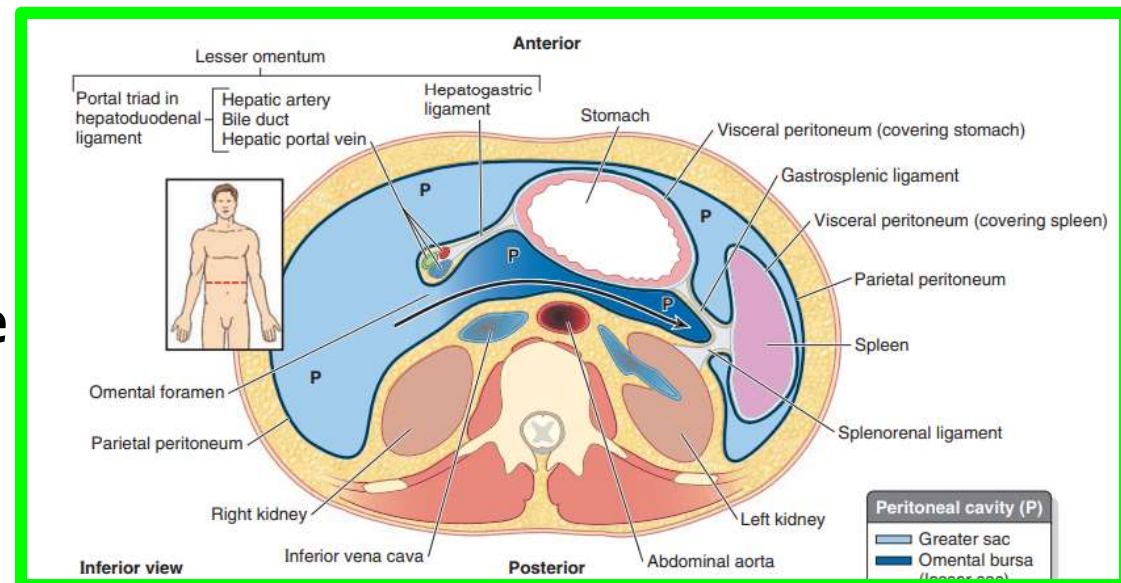
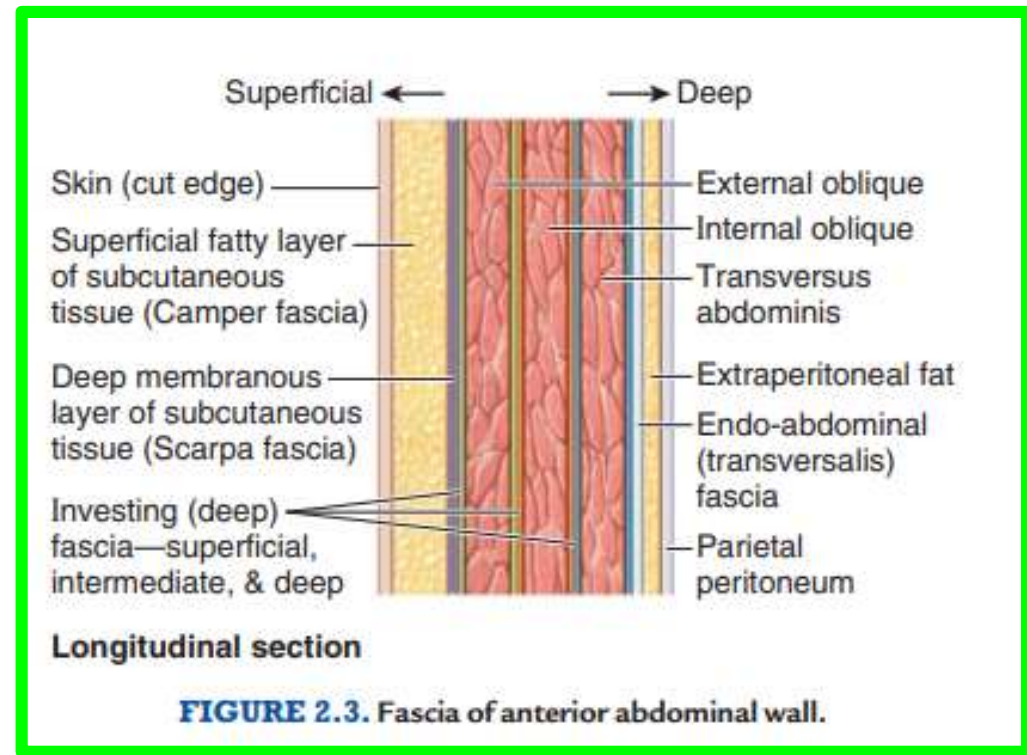
General Arrangement

Between the parietal peritoneum and the fascial lining of the abdominal and pelvic walls is a layer of connective tissue called the extra peritoneal tissue

In the area of the kidneys this tissue contains a large amount of fat, which supports the kidneys

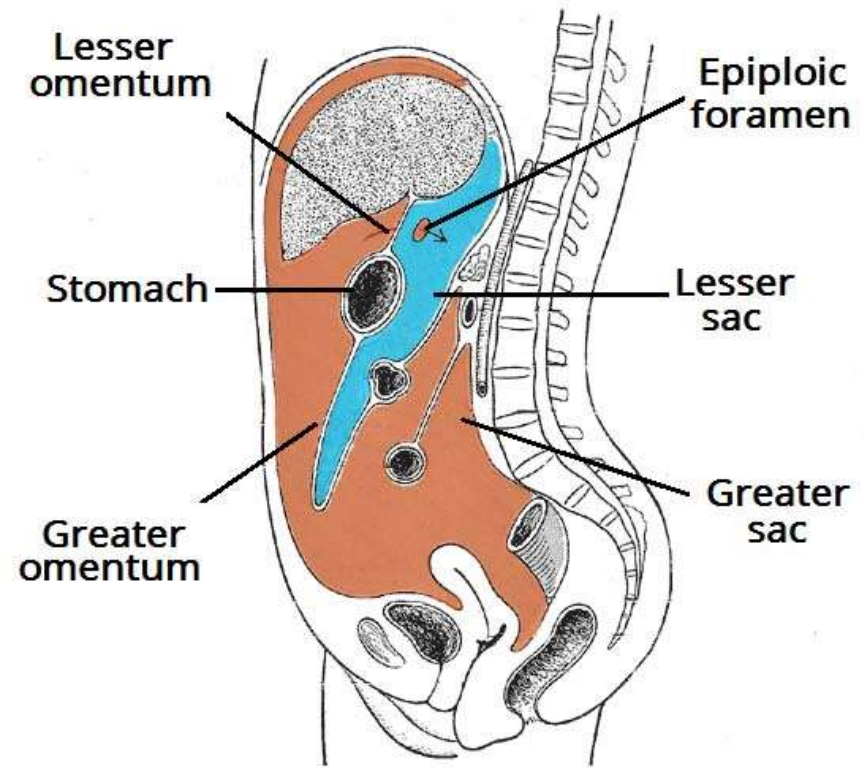
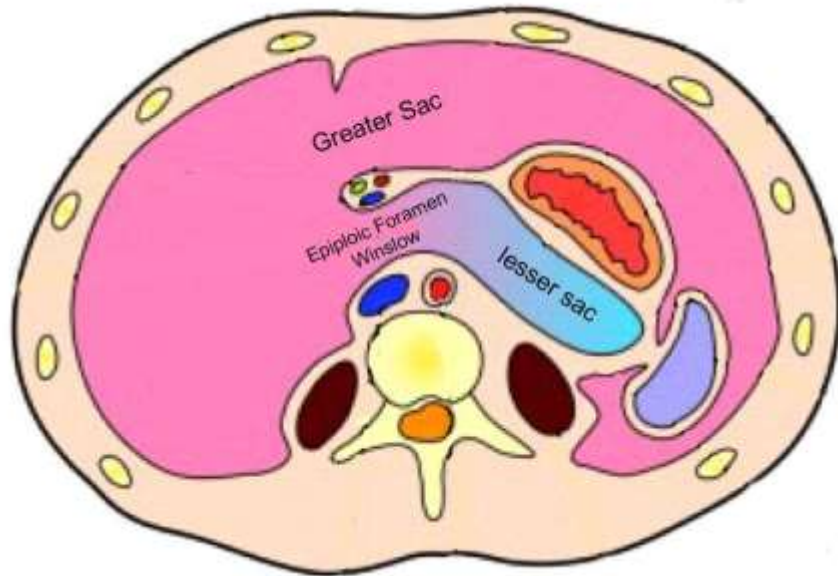
4

Dr. Aiman Qais Afar
Tuesday 5 April 2022



PERITONEUM

General Arrangement



© teachmeanatomy
The #1 Applied Human Anatomy Site on the Web.

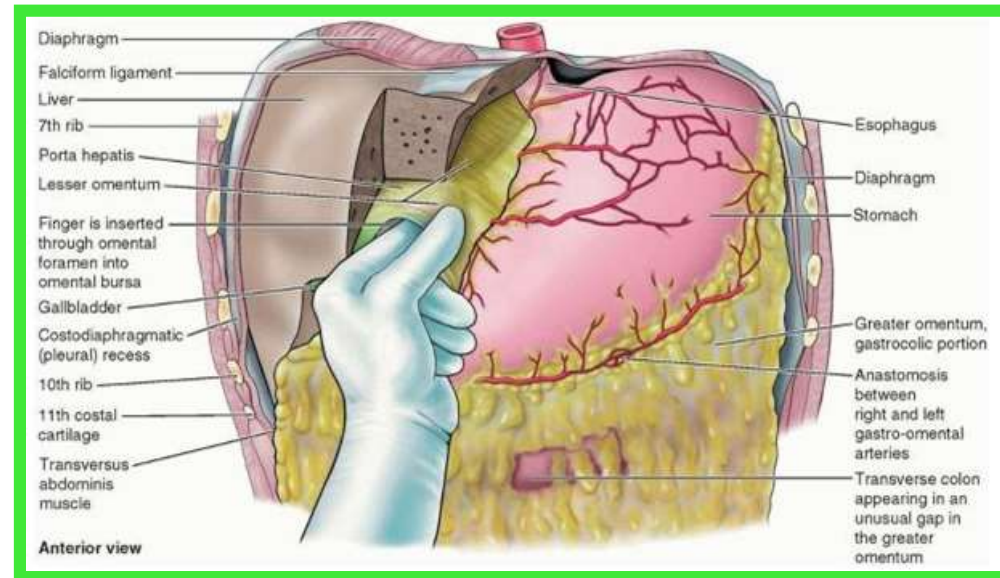
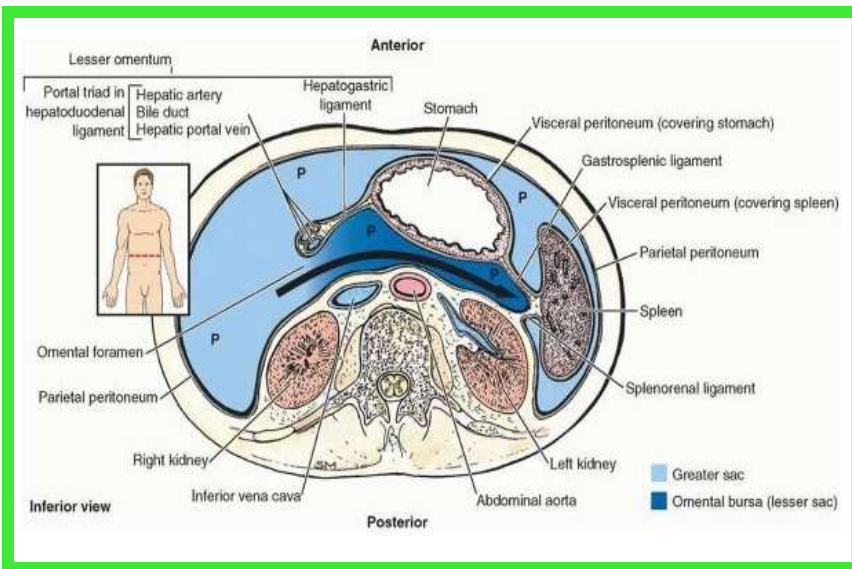
The **peritoneal cavity** is the largest cavity in the body and is divided into two parts:

- ❖ **The greater sac** is the main compartment and extends from the diaphragm down into the pelvis.
- ❖ **The lesser sac** is smaller and lies behind the stomach.

PERITONEUM

General Arrangement

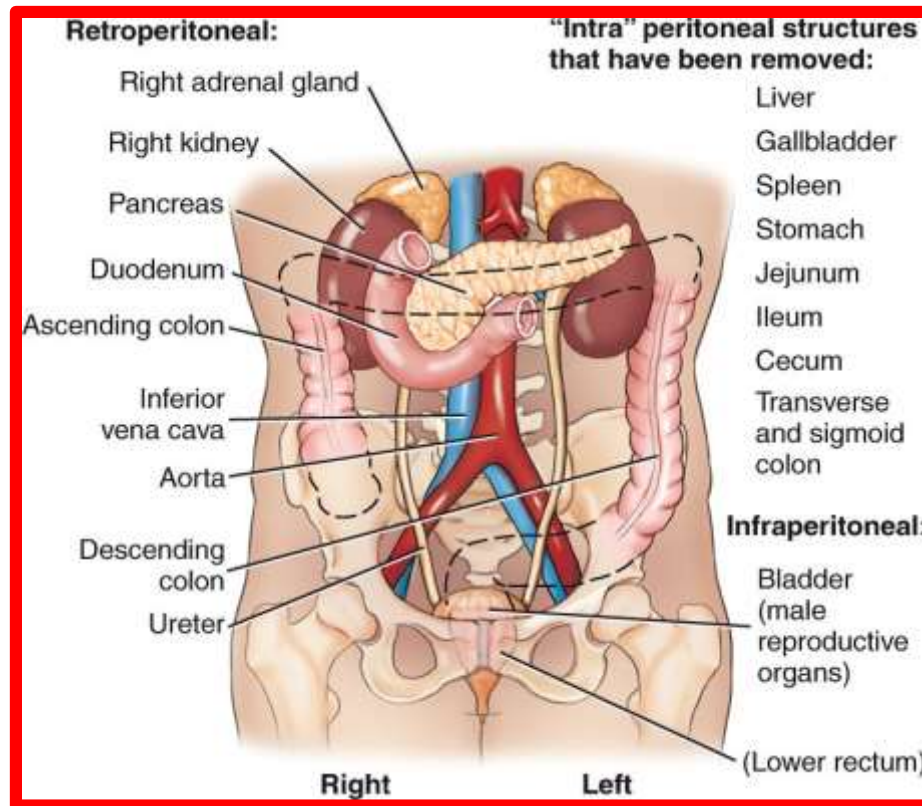
The greater and lesser sacs are in free communication with one another through an oval window called the **opening of the lesser sac, or the epiploic foramen**.



The peritoneum secretes a small amount of serous fluid, **the peritoneal fluid**, which lubricates the surfaces of the peritoneum and allows free movement between the viscera.

Intraperitoneal and Retroperitoneal Relationships

□ **Intraperitoneal organ** when it is almost totally covered with visceral peritoneum like **stomach, spleen, jejunum, ileum**.



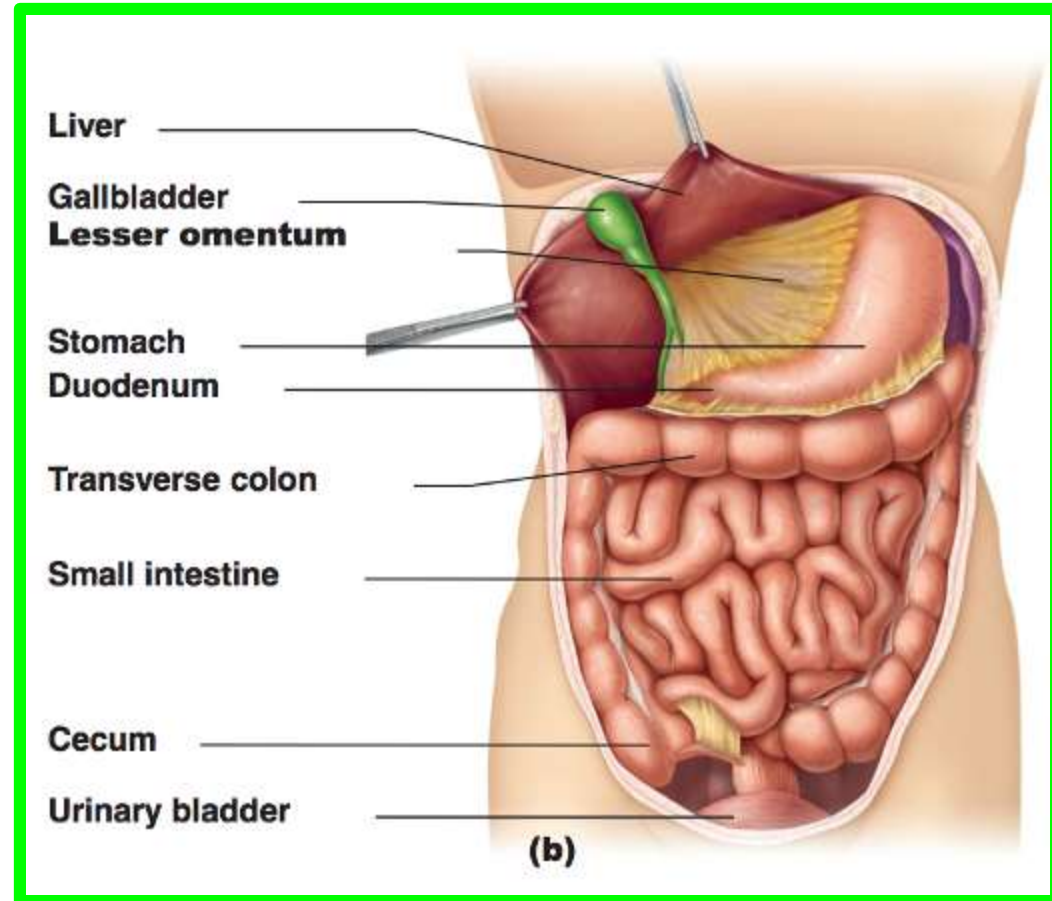
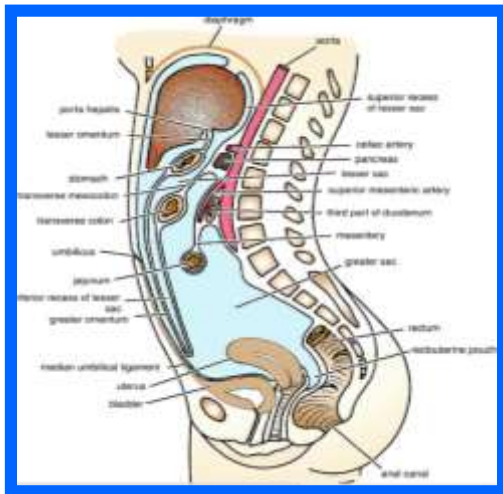
Dr. Aiman Qais Afar
Tuesday 5 April 2022

□ **Retroperitoneal organ** lie behind the peritoneum and are only partially covered with visceral peritoneum like **pancreas, ascending and descending colon**

Intraperitoneal and Retroperitoneal Relationships

No organ, however, is actually within the peritoneal cavity.

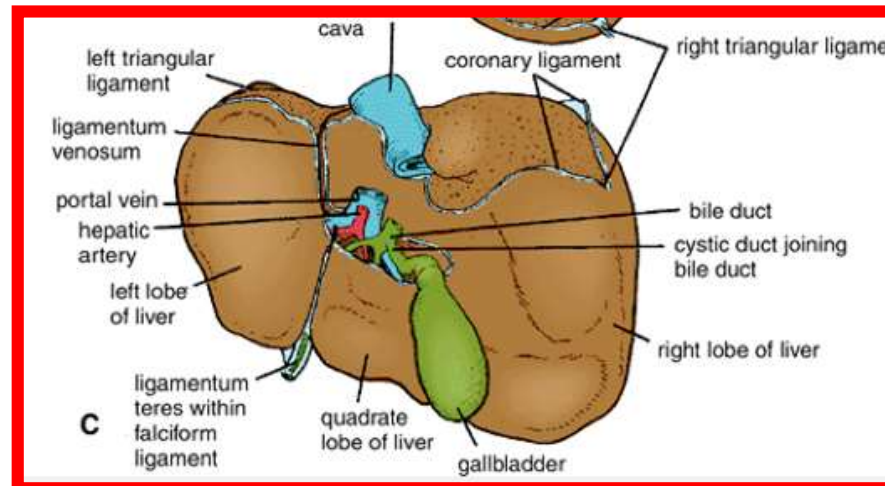
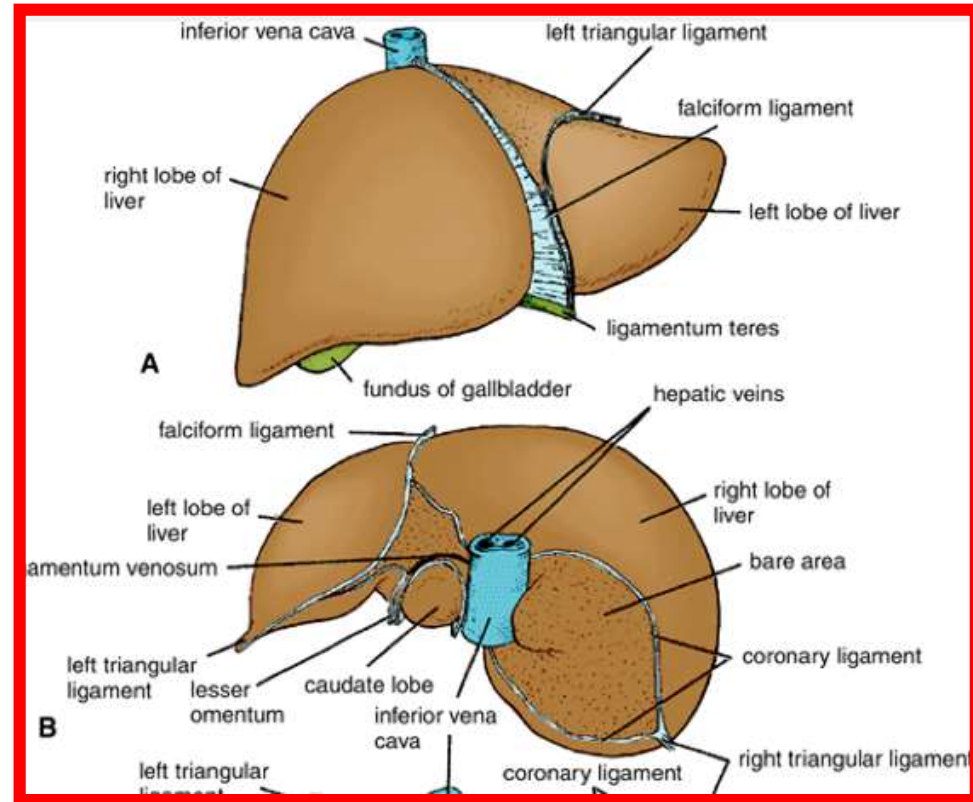
❖ An intraperitoneal organ, such as the stomach, appears to be surrounded by the peritoneal cavity, but it is covered with visceral peritoneum and is attached to other organs by omenta.



Peritoneal Ligaments

Peritoneal ligaments are two-layered folds of peritoneum that connect an organ with another organ or to the abdominal wall.

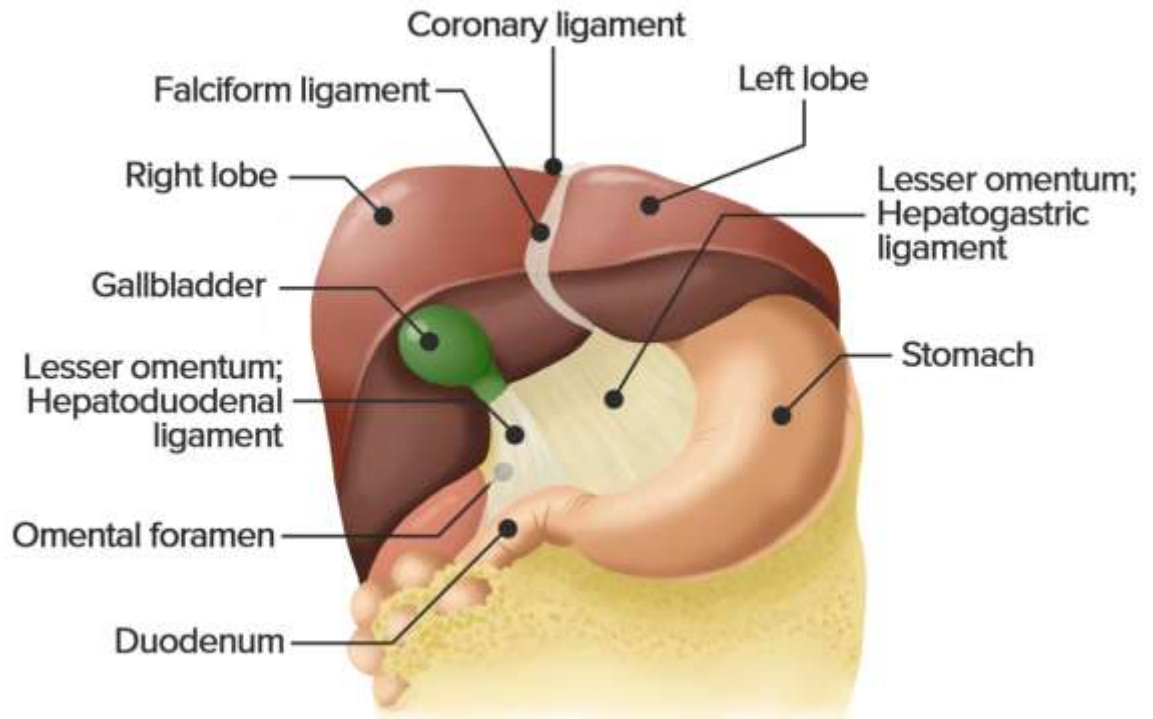
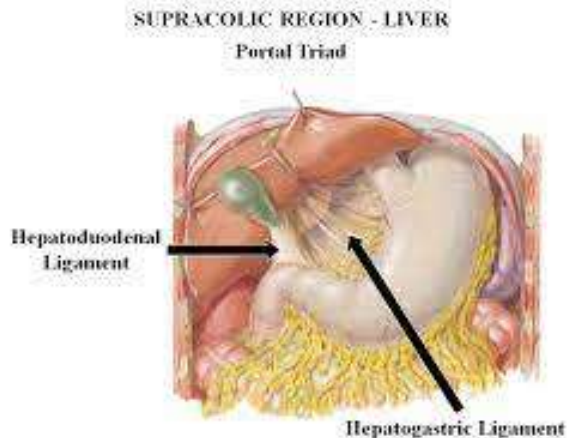
The liver, is connected to the diaphragm by the **falciform ligament**, the **coronary ligament**, and the **right and left triangular ligaments**



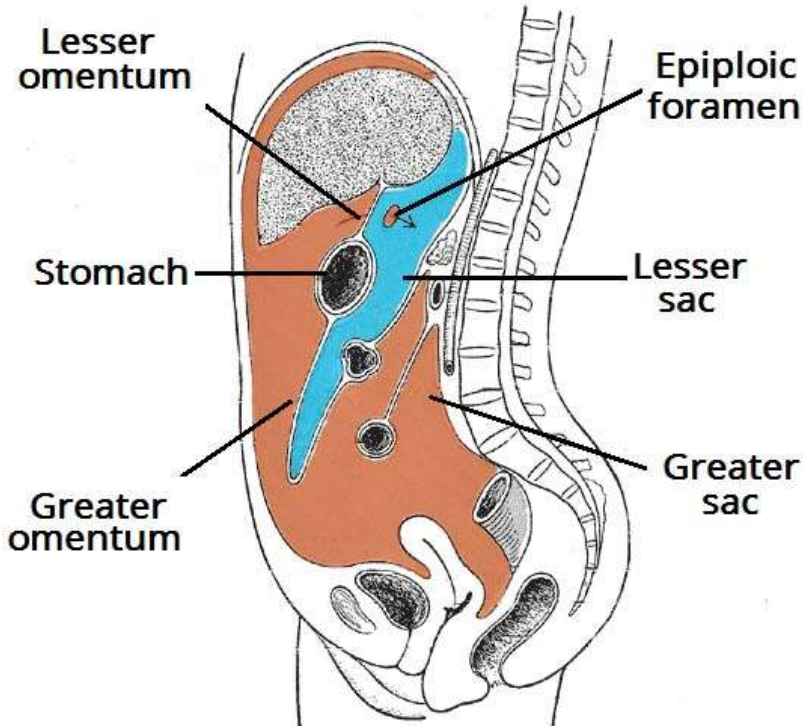
Peritoneal Ligaments

Liver to the stomach by the **hepatogastric ligament**, the membranous portion of the lesser omentum.

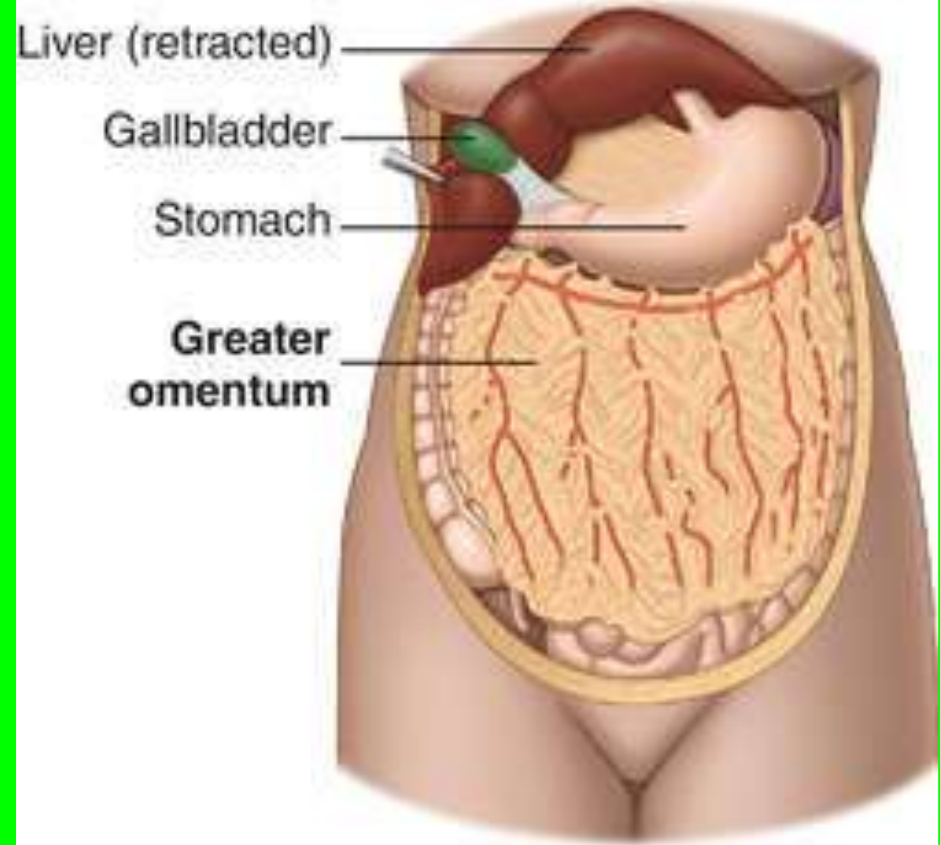
To duodenum by **the hepatoduodenal ligament**, the thickened free edge of the lesser omentum, which conducts the portal triad: **portal vein**, **hepatic artery**, and **bile duct**



Omenta



© teachmeanatomy
The #1 Applied Human Anatomy Site on the Web.



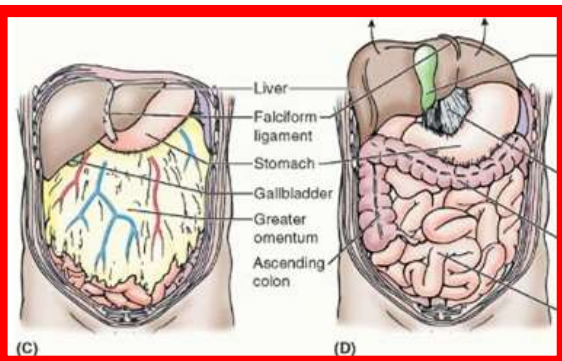
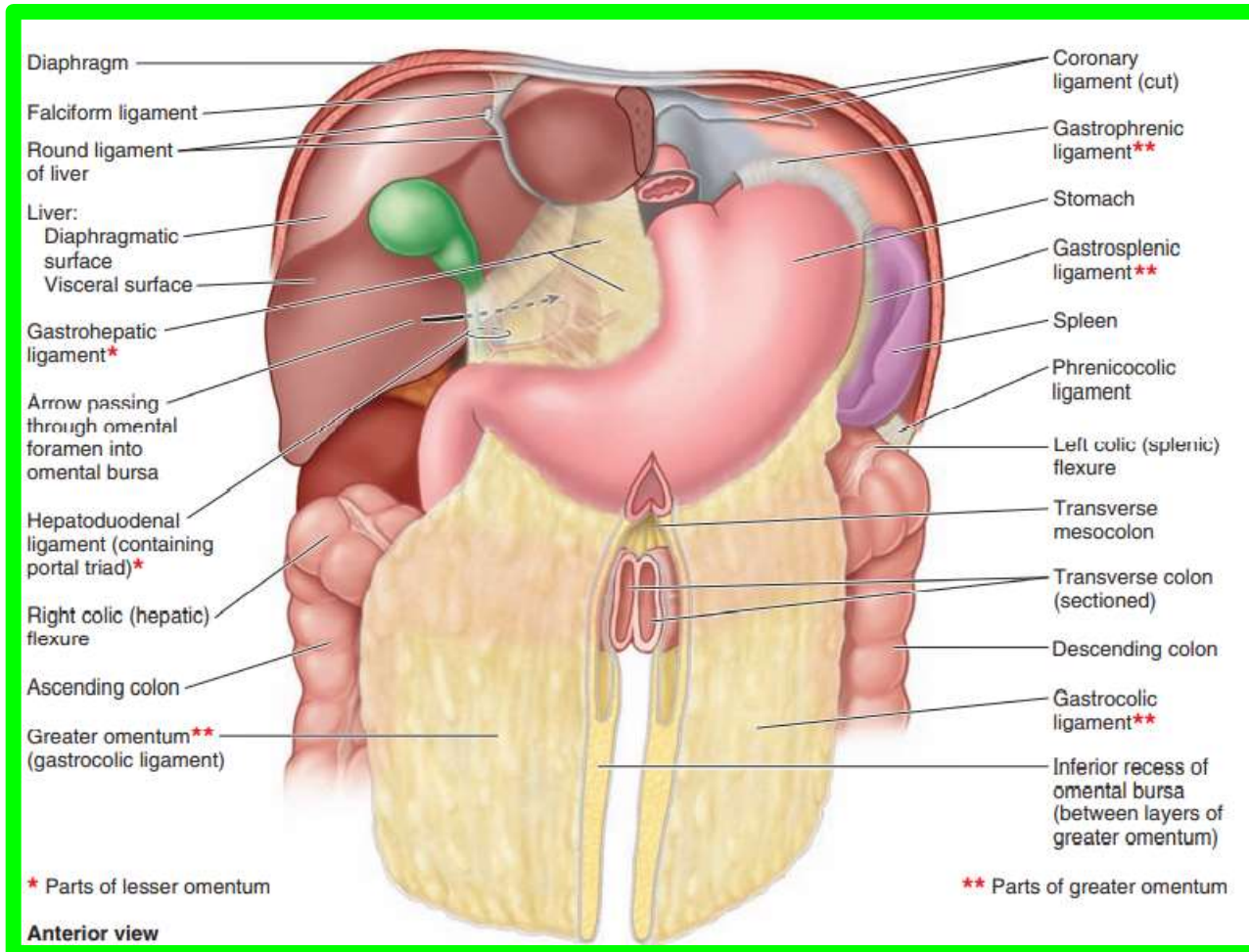
An omentum is a double-layered extension or fold of peritoneum that passes from the stomach and proximal part of the duodenum to adjacent organs in the abdominal cavity.

Omenta

The greater omentum

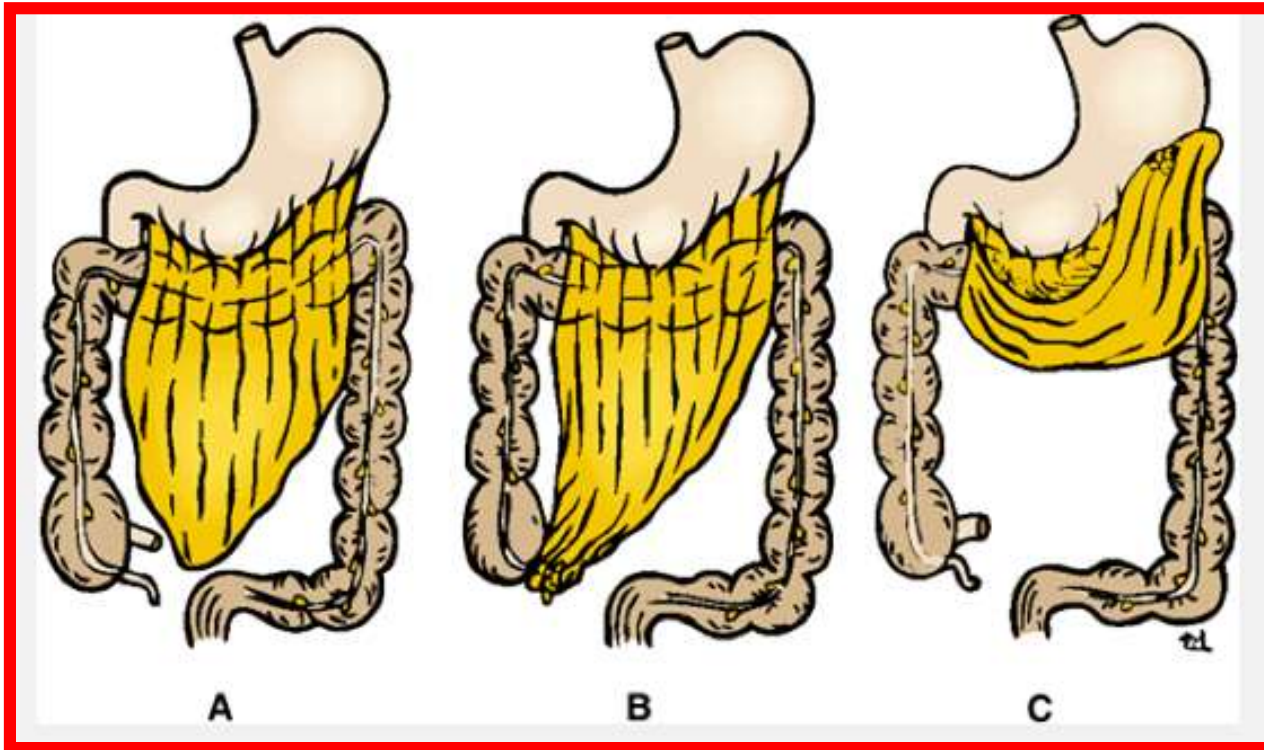
is a prominent, **four-layered peritoneal fold** that hangs down like an apron from the **greater curvature of the stomach** and the **proximal part of the duodenum**.

After descending, it folds back and attaches to the **anterior surface of the transverse colon** and its mesentery.



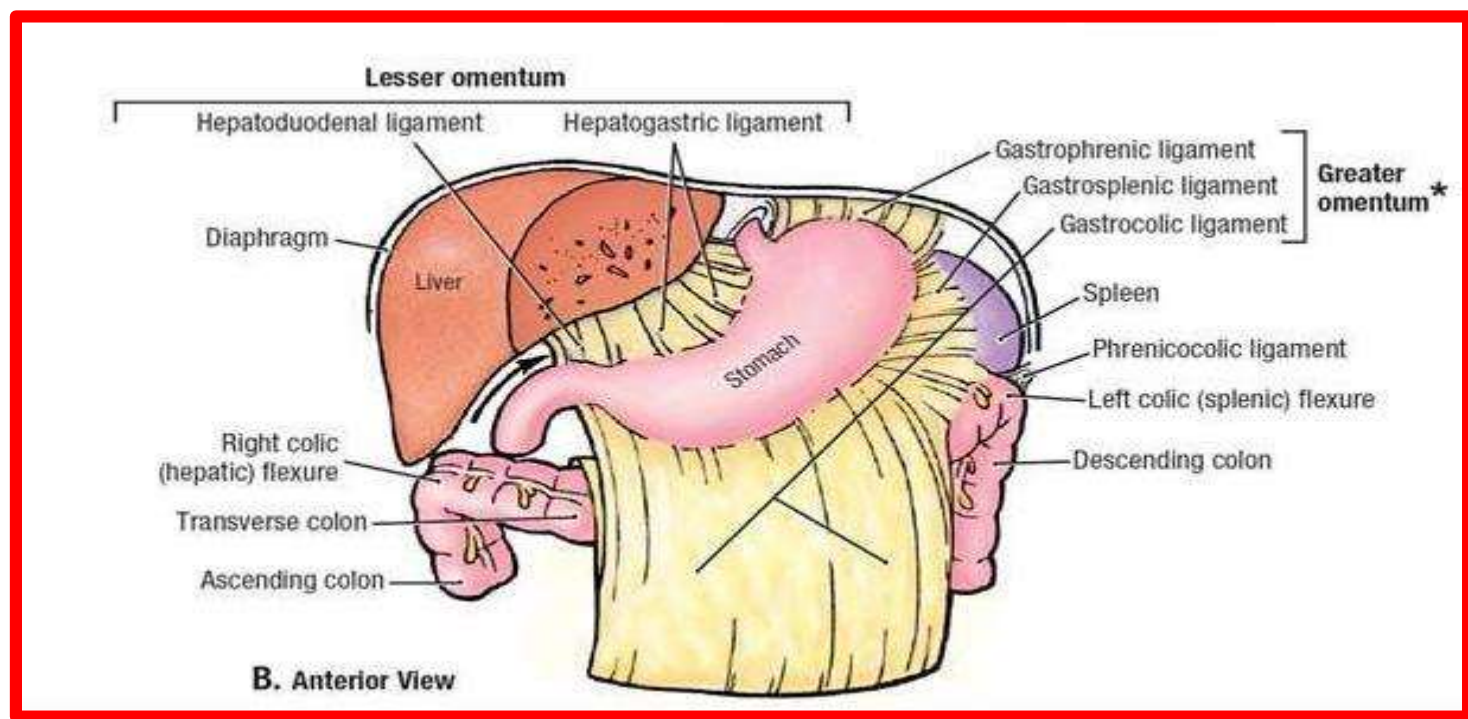
Omenta

The greater omentum



One important function of the greater omentum is to attempt to limit the spread of intraperitoneal infections.

Omenta



Dr. Aiman Qais Afar
Tuesday 5 April 2022

15

The lesser omentum

Is a much smaller, **double-layered peritoneal fold** that connects the lesser curvature of the stomach and the proximal part of the duodenum to **the liver**

➤ It also connects the stomach to **a triad of structures** that run between the duodenum and liver in the **free edge of the lesser omentum**

Mesenteries

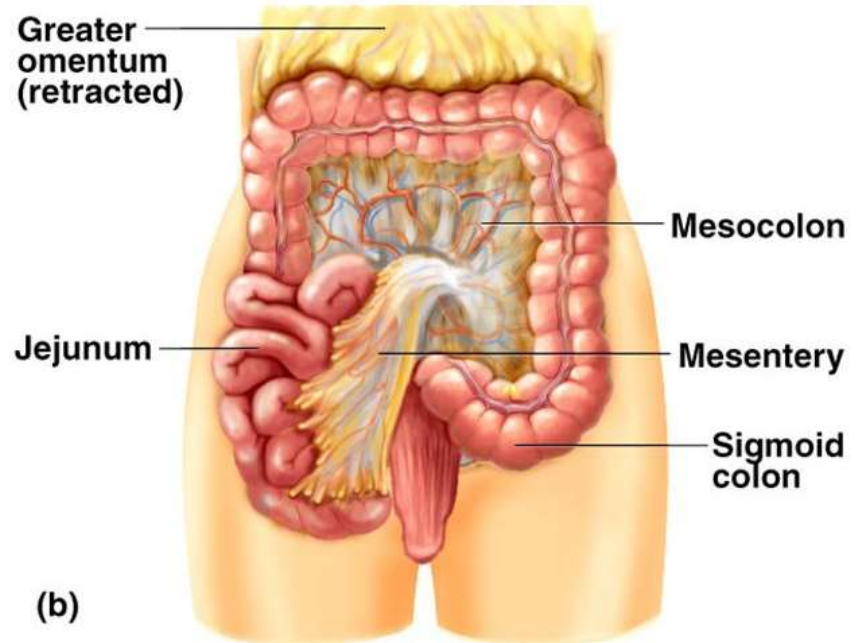
Dr. Aiman Qais Afar

❖ A **mesentery** is a double layer of peritoneum that occurs as a result of the invagination of the peritoneum by an organ and constitutes a continuity of the **visceral** and **parietal peritoneum**

❖ It provides a means for **neurovascular communications** between the organ and the body wall

❖ A mesentery connects an intraperitoneal organ to the body wall—usually the posterior abdominal wall (e.g., **mesentery of the small intestine**)

Mesentery and Mesocolon

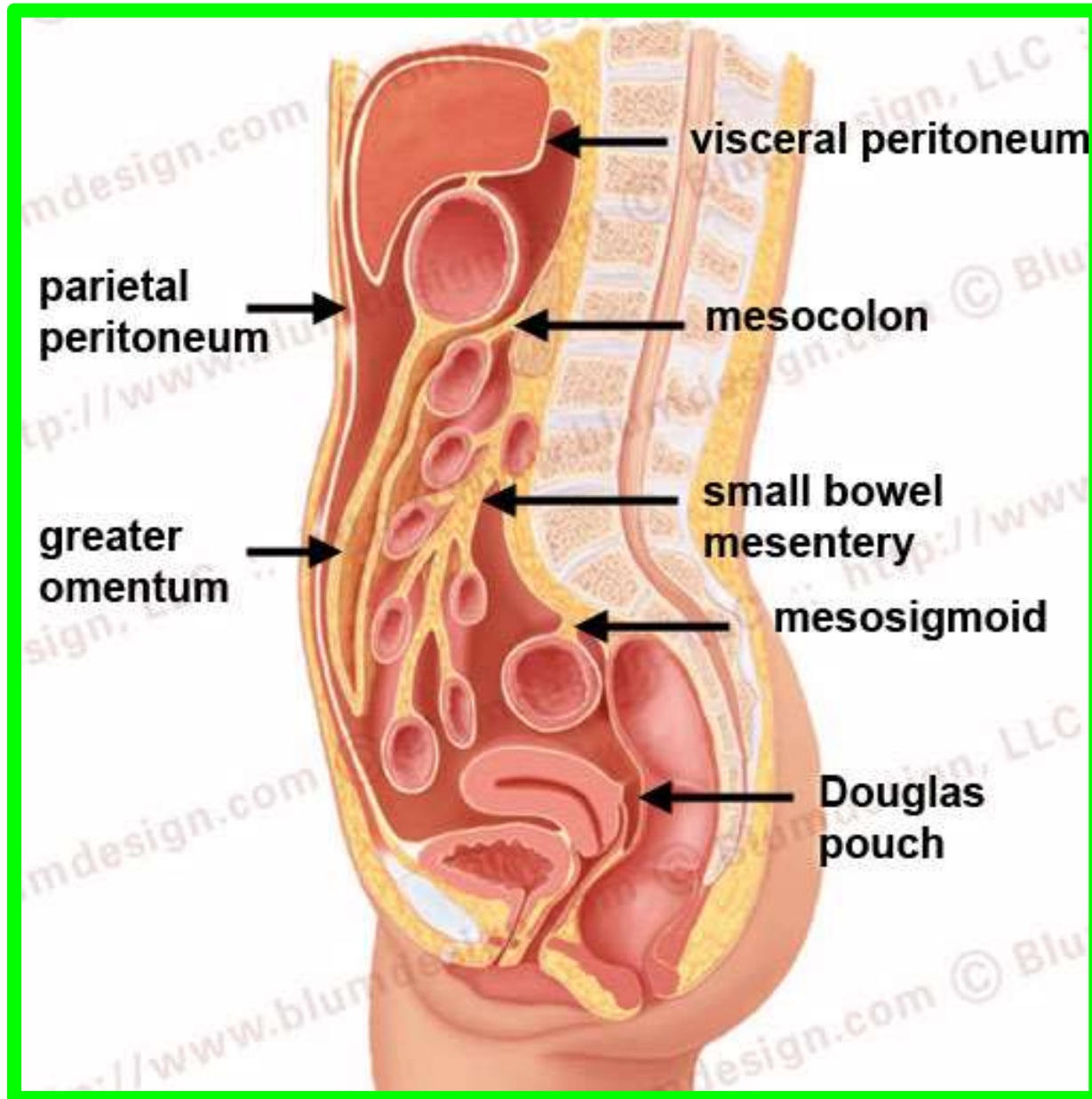


16

Tuesday 5 April 2022



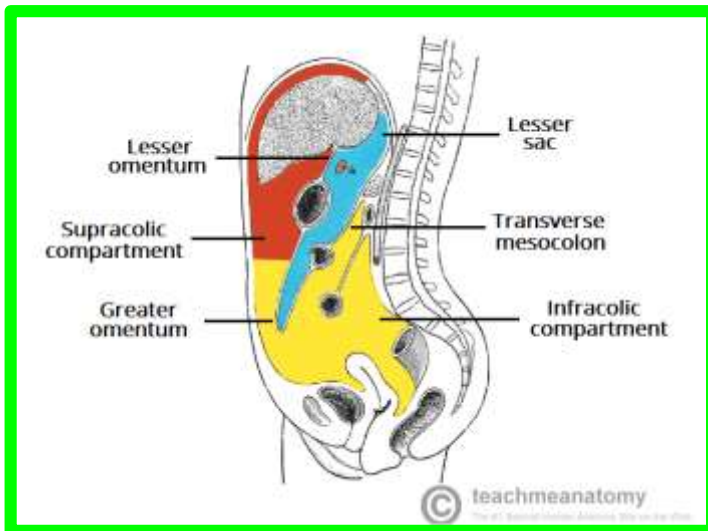
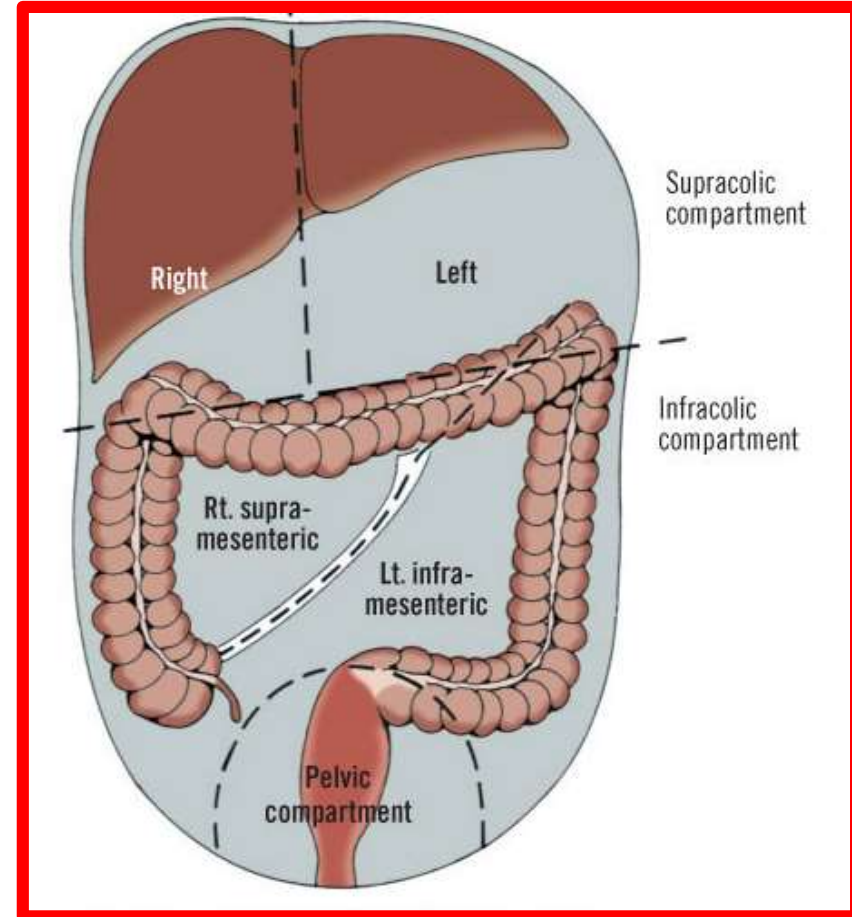
Mesenteries



Subdivisions of Peritoneal Cavity

The transverse mesocolon (mesentery of the transverse colon) divides the abdominal cavity into:

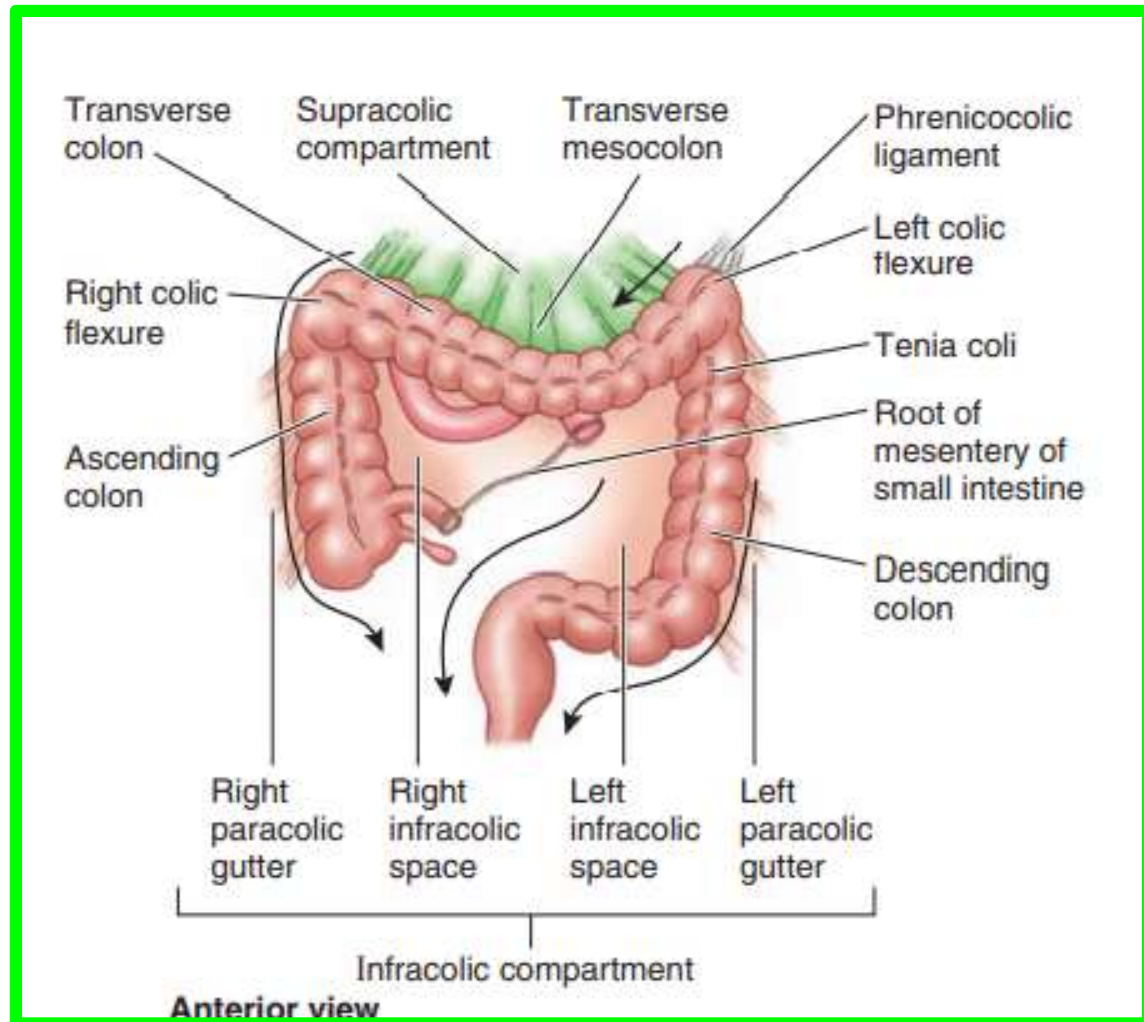
- ✓ A **supracolic compartment**, containing the stomach, liver, and spleen
- ✓ An **infracolic compartment**, containing the small intestine and ascending and descending colon.



Subdivisions of Peritoneal Cavity

✓ The **infracolic compartment** lies posterior to the greater omentum and is divided into **right** and **left infracolic** spaces by the **mesentery of the small intestine**.

❖ Free communication occurs between **the supracolic** and **the infracolic** compartments through **the paracolic gutters**

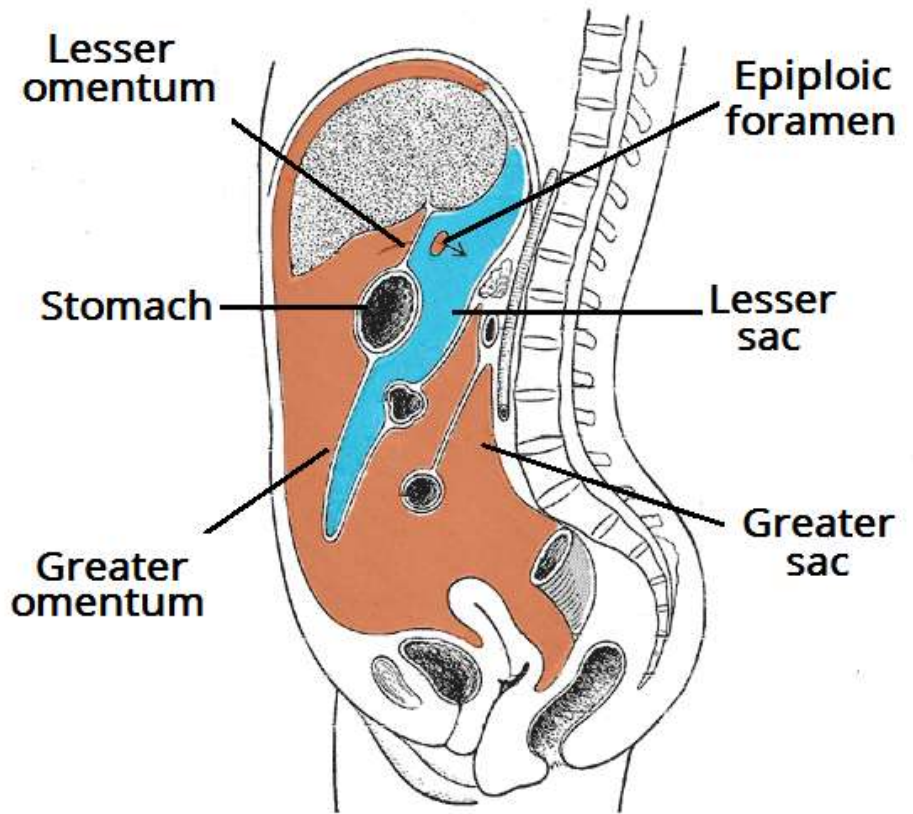


Peritoneal Pouches, Recesses, Spaces, and Gutters

Lesser Sac

Epiploic foramen location "important" !!

1. Epiploic foramen
2. To superior recess of lesser omental bursa
3. Pancreas (retroperitoneal)

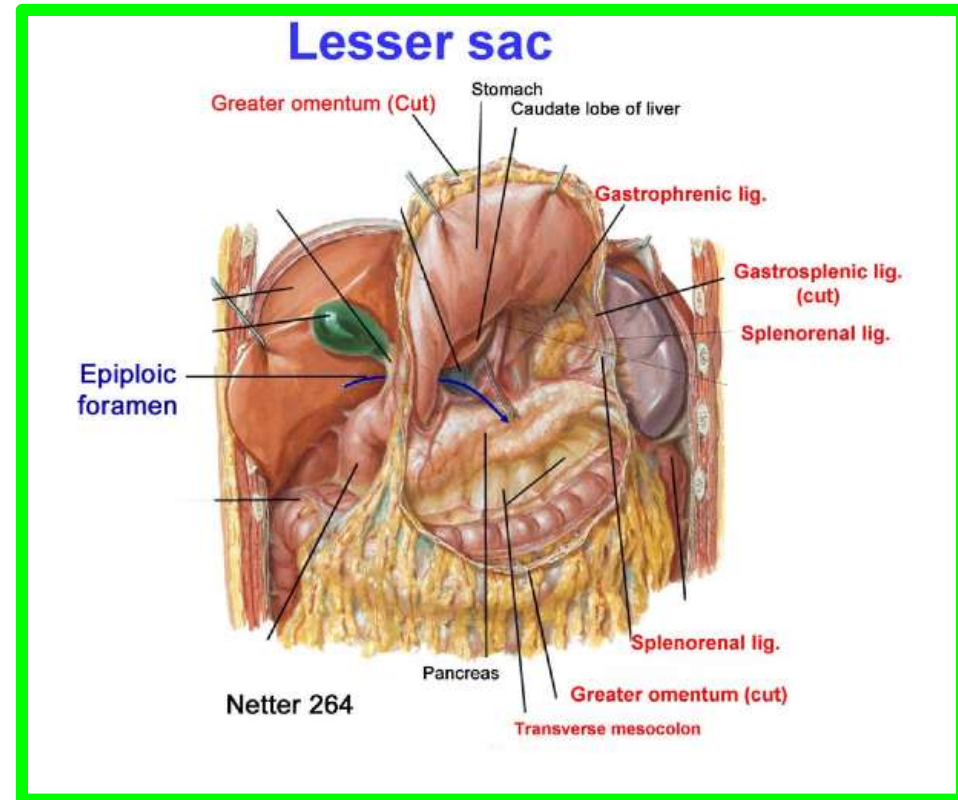
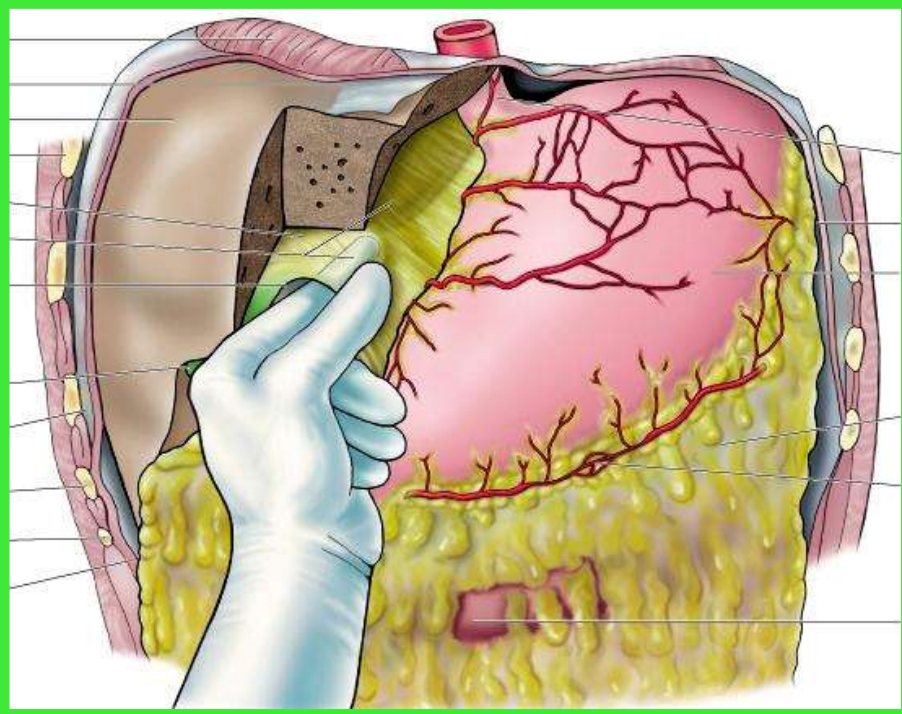


© teachmeanatomy
The #1 Applied Human Anatomy Site on the Web.

The lesser sac lies behind the stomach and the lesser omentum.
✓ It extends upward as far as the diaphragm and downward between the layers of the greater omentum.

Peritoneal Pouches, Recesses, Spaces, and Gutters

Lesser Sac



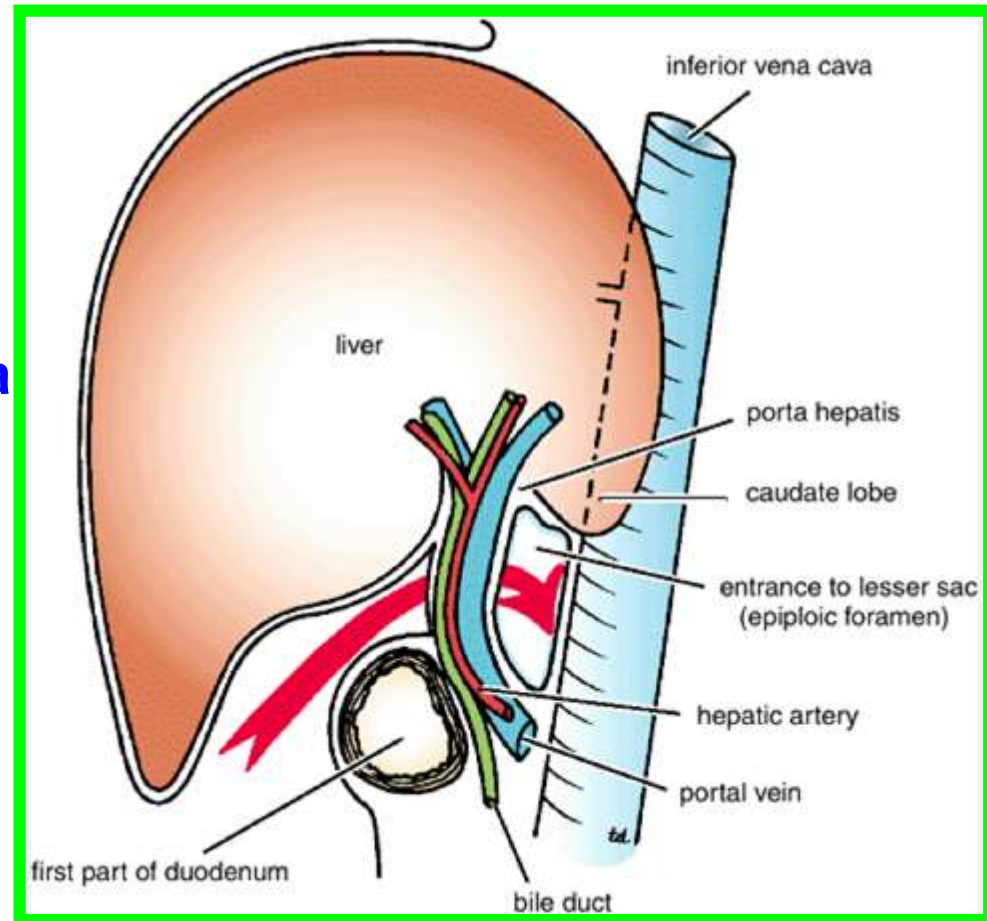
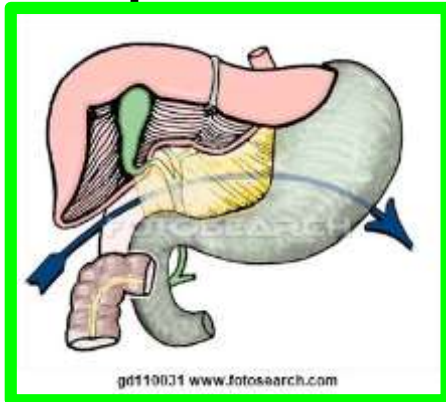
- ✓ The **left margin** of the sac is formed by the **spleen** and the **gastrosplenic omentum** and **splenicorenal ligament**.
- ✓ The **right margin** opens into the **greater sac** (the main part of the **peritoneal cavity**) through the opening of the lesser sac, or **epiploic foramen**.

Peritoneal Pouches, Recesses, Spaces, and Gutters

Lesser Sac

The opening into the lesser sac (**Epiploic Foramen**) has the following boundaries:

- ✓ **Anteriorly:** Free border of the lesser omentum, **the bile duct**, **the hepatic artery**, and **the portal vein**.
- ✓ **Posteriorly:** **Inferior vena cava**
- ✓ **Superiorly:** Caudate process of the caudate lobe of the liver
- ✓ **Inferiorly:** First part of the duodenum



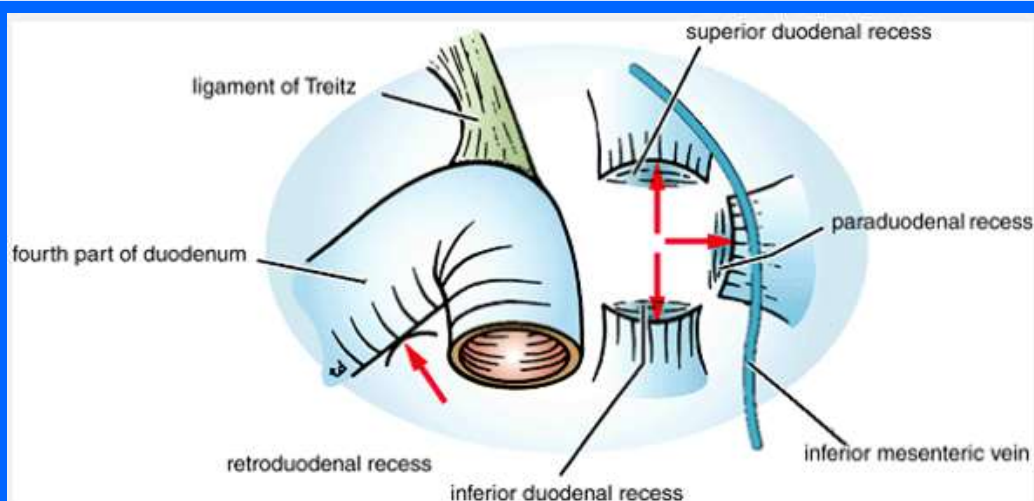
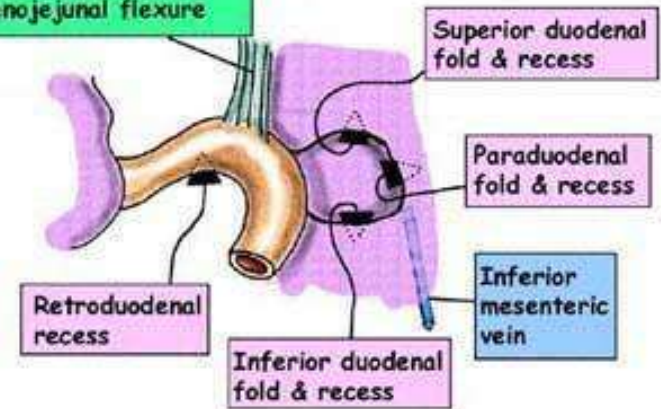
Duodenal Recesses

Close to the **duodenojejunal junction**, there may be four small pocket like pouches of peritoneum called the **superior duodenal**, **inferior duodenal**, **paraduodenal**, and **retroduodenal** recesses.

PERITONEAL RECESSES

There are a number of small recesses, as shown below, that are potential areas for internal herniation of bowel or other structures

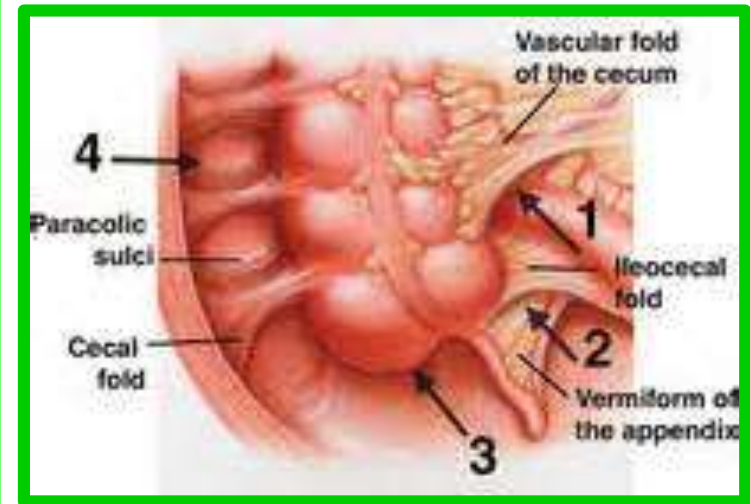
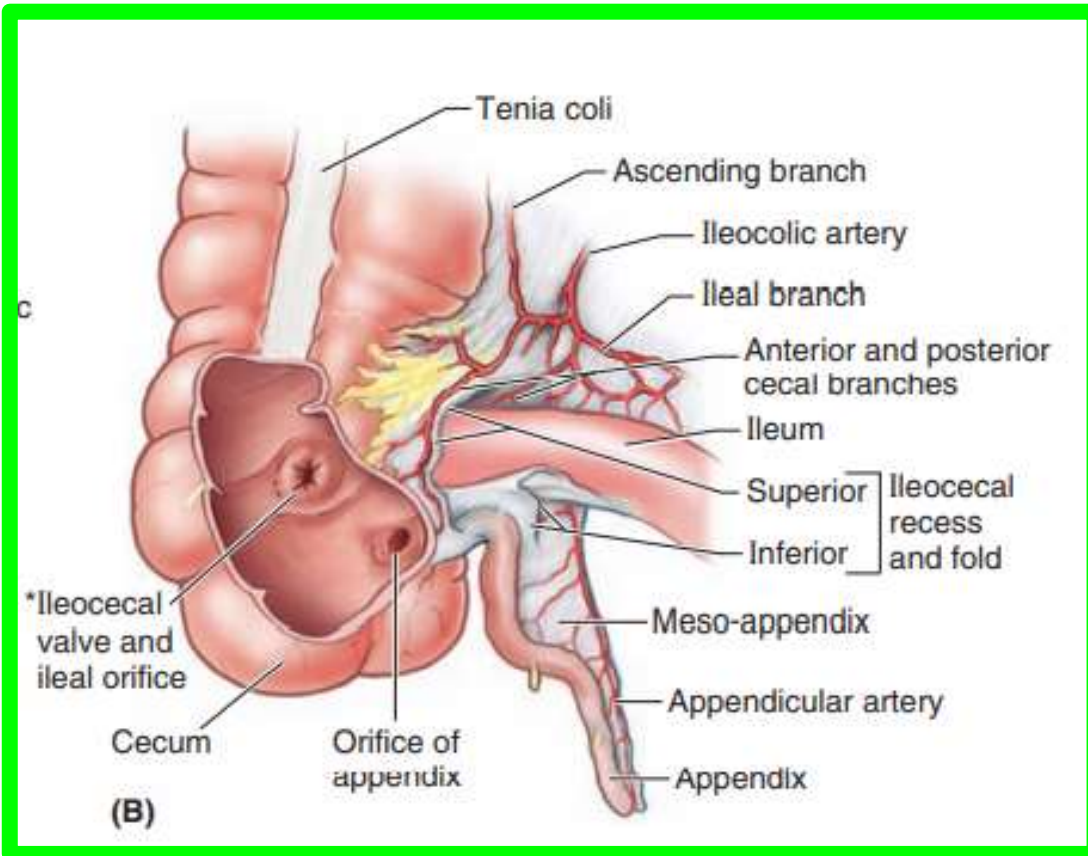
Ligament of Treitz
Thin band of smooth muscle from right crus, passing anterior to aorta/renal vessels but behind pancreas, to blend with outer coat of duodenojejunal flexure



Peritoneal Pouches, Recesses, Spaces, and Gutters

Cecal Recesses

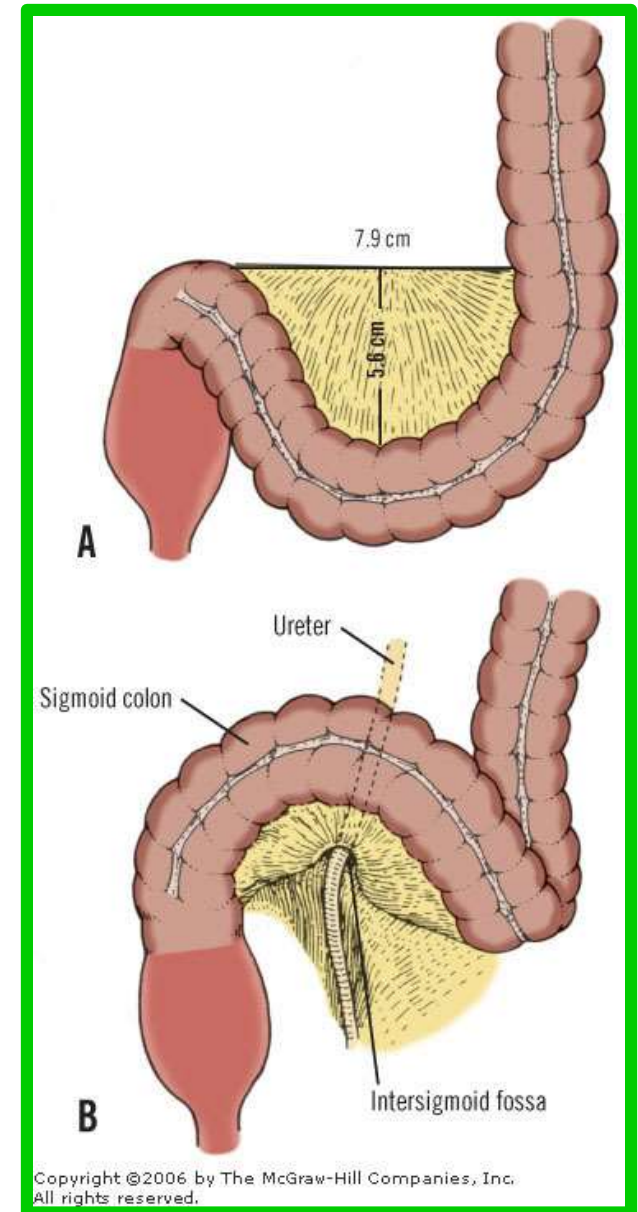
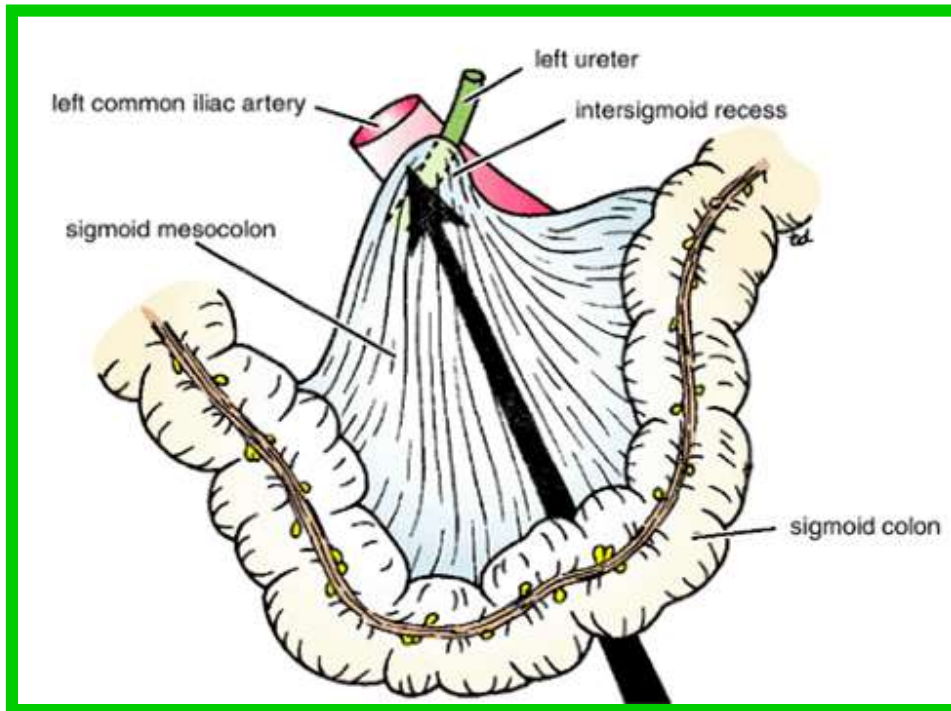
Folds of peritoneum close to the cecum produce three peritoneal recesses called the **superior ileocecal**, the **inferior ileocecal**, and the **retrocecal recesses**



Peritoneal Pouches, Recesses, Spaces, and Gutters

Intersigmoid Recess

The **intersigmoid recess** is situated at the apex of the inverted, V-shaped root of the sigmoid mesocolon, its mouth opens downward.



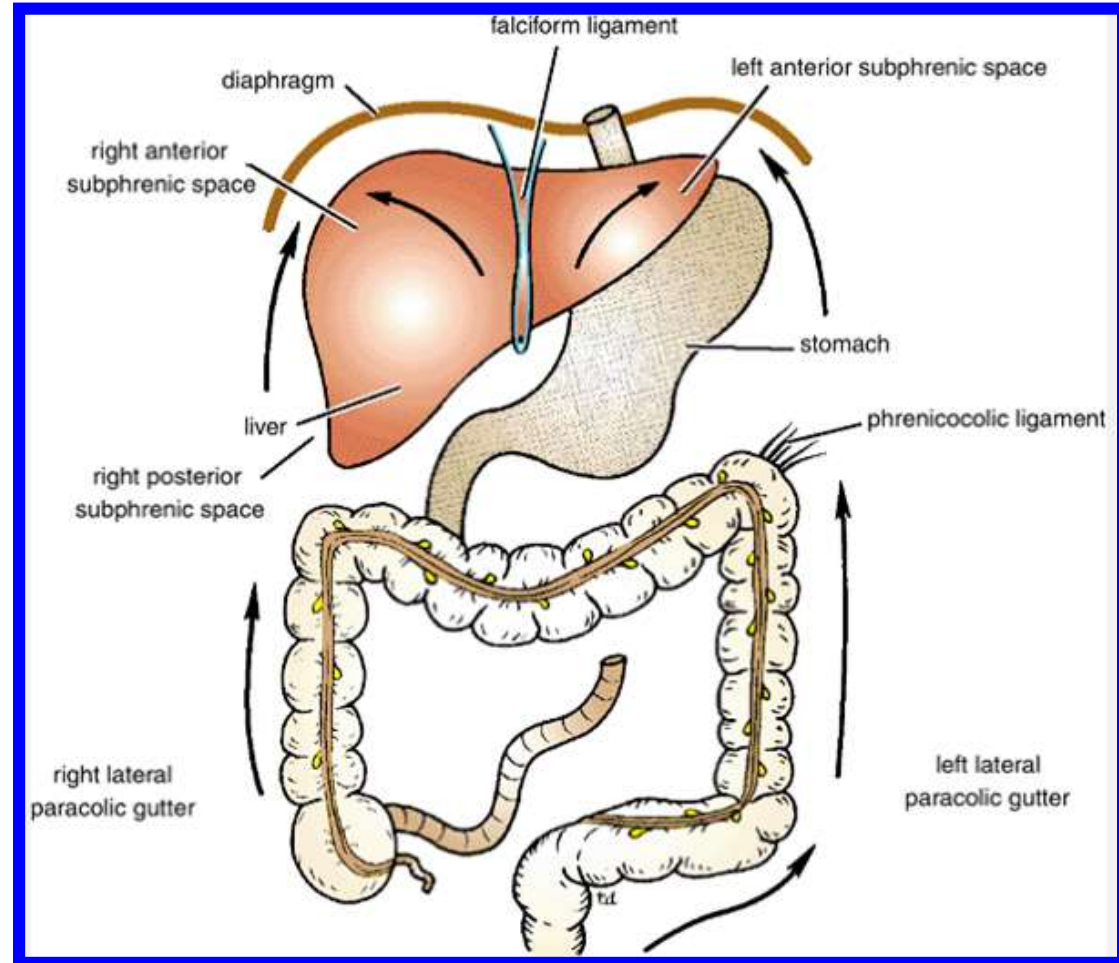
Copyright ©2006 by The McGraw-Hill Companies, Inc.
All rights reserved.

Peritoneal Pouches, Recesses, Spaces, and Gutters

Subphrenic Spaces

The right and left anterior subphrenic spaces lie between the diaphragm and the liver, on each side of the falciform ligament.

❖ These two spaces are closed above by the superior layer of the **coronary ligament** and the anterior layer of the **left triangular ligament** respectively



Peritoneal Pouches, Recesses, Spaces, and Gutters

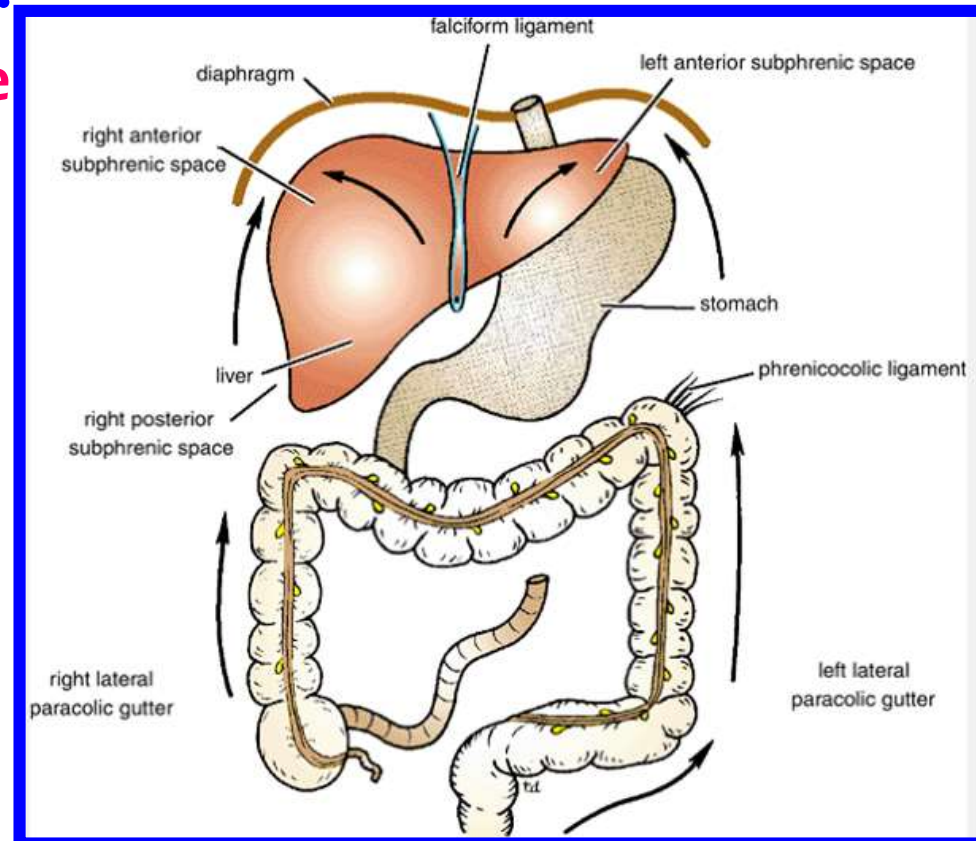
Subphrenic Spaces

Dr. Aiman Qais Afar

Tuesday 5 April 2022

The **right posterior subphrenic** Behind the right lobe of the liver and in front of the right kidney is the **right subhepatic space or hepatorenal pouch (of Morison)**.

This space is closed above by the inferior layer of the coronary ligament and the small right triangular ligament. To the right it is bounded by the abdominal surface of the diaphragm. On the left side the space communicates through the **epiploic foramen with the lesser sac or left subhepatic space**.

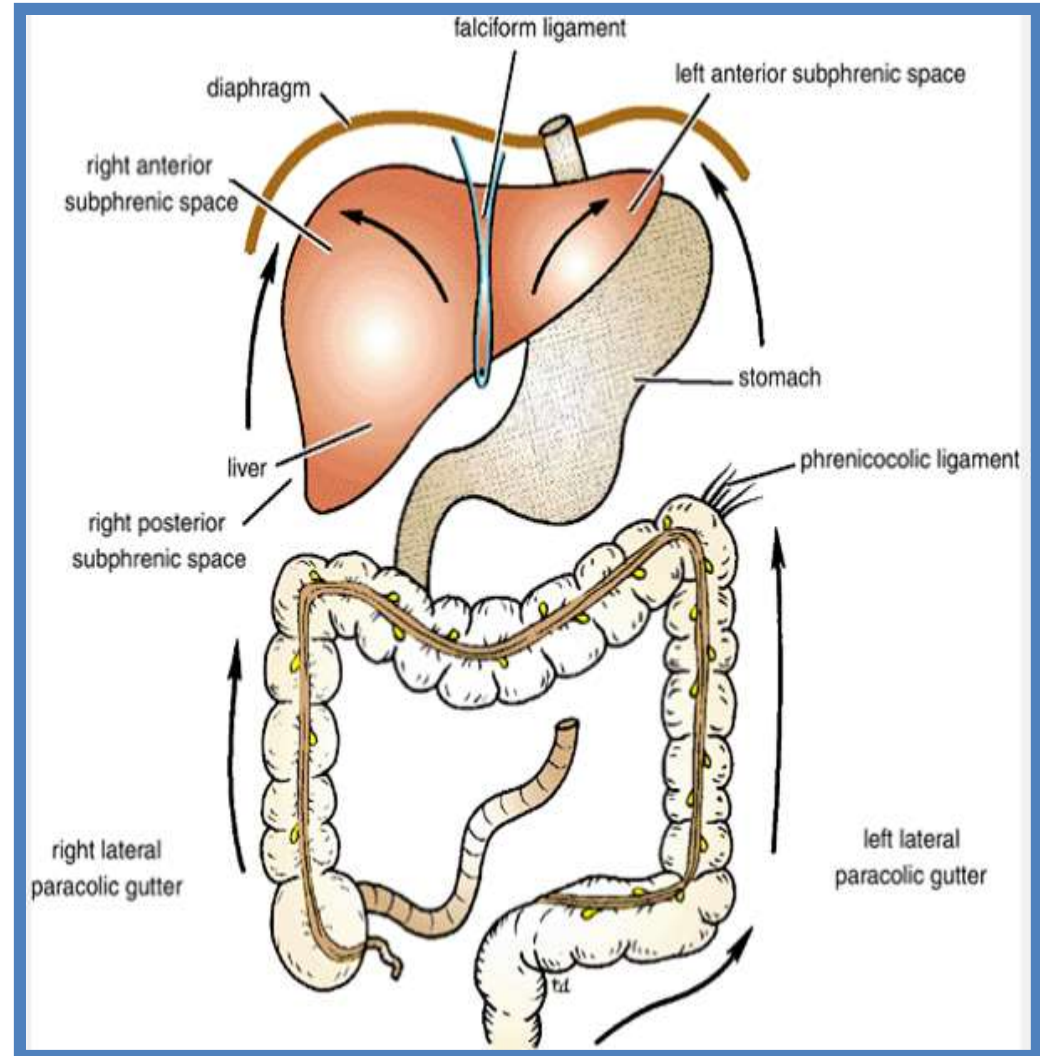


Peritoneal Pouches, Recesses, Spaces, and Gutters

Paracolic Gutters

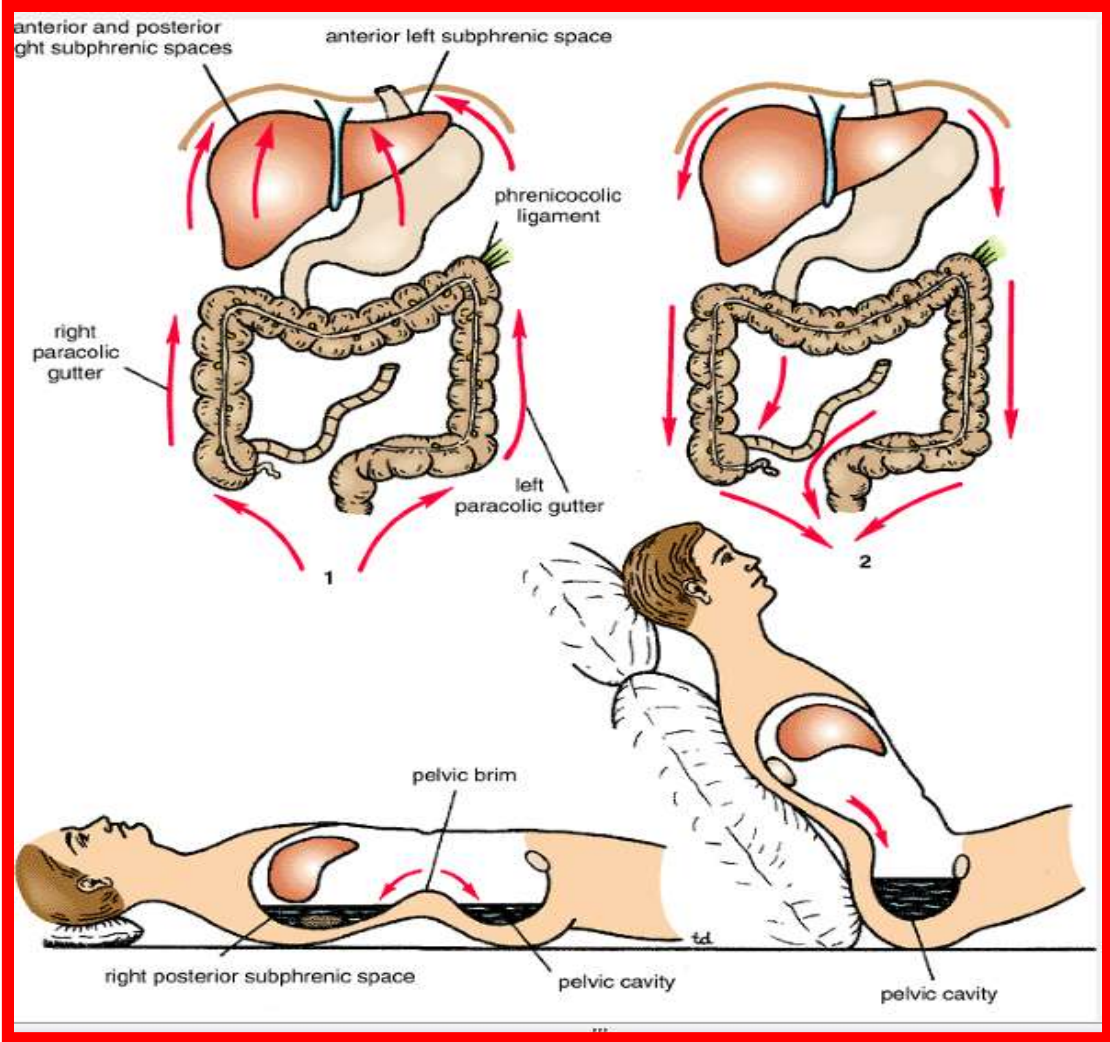
The **paracolic gutters** lie on the lateral and medial sides of the ascending and descending colons, respectively .

❖ The **subphrenic spaces** and the **paracolic gutters** are **clinically important** because they may be sites for the collection and movement of infected peritoneal fluid.



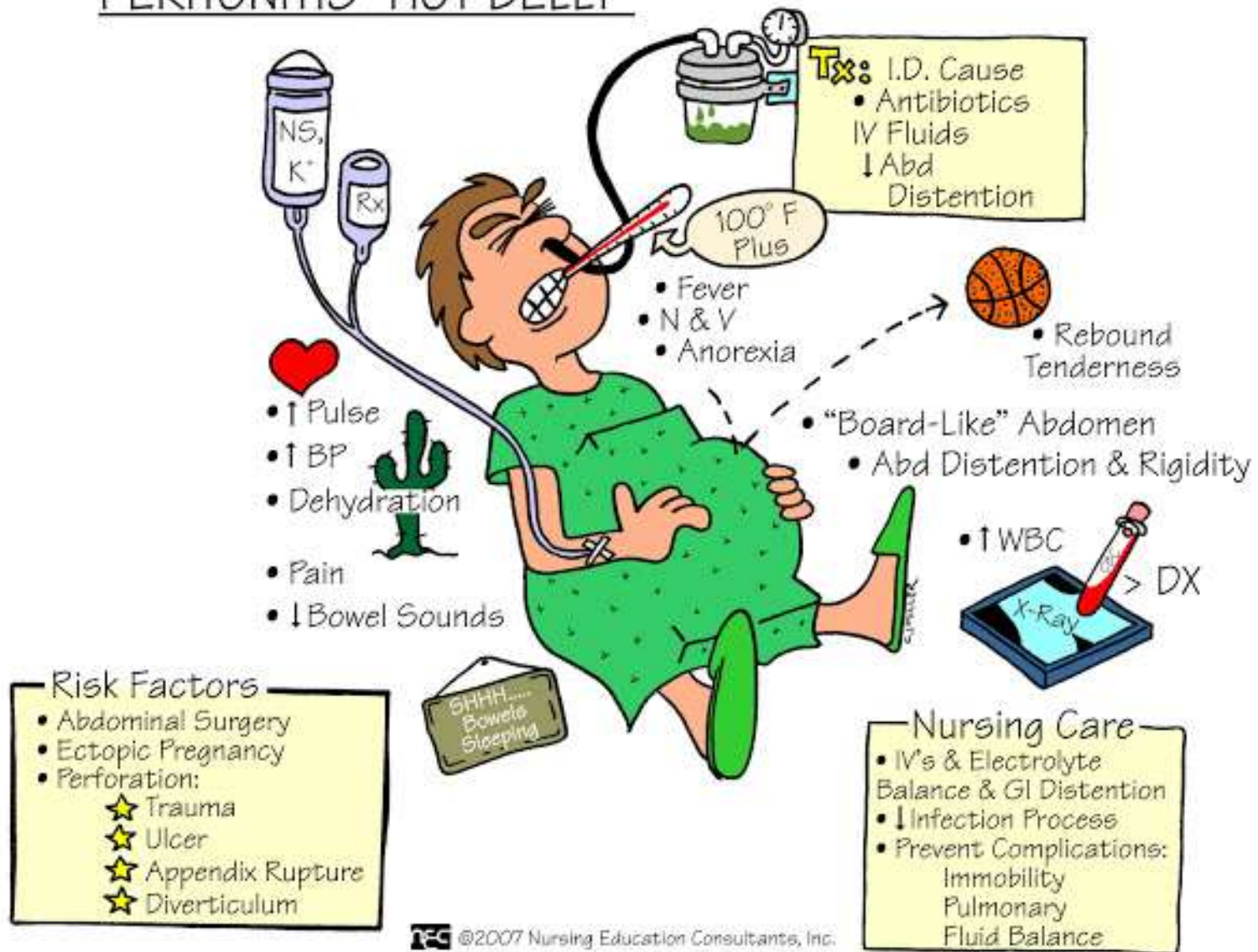
Peritonitis and Ascites ???

Fluid in Omental Bursa ???



Abdominal Paracentesis ???

PERITONITIS "HOT BELLY"



Peritonitis and Ascites ???

Abdominal Paracentesis ???



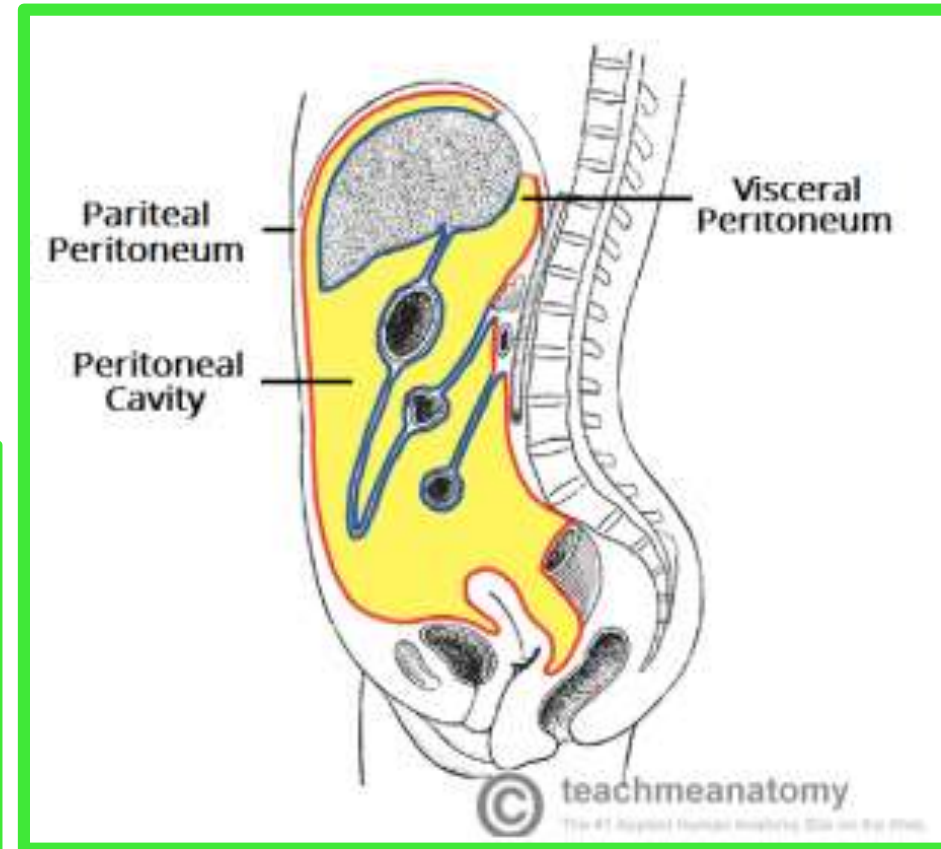
Nerve Supply of the Peritoneum

The **parietal peritoneum** is sensitive to **pain, temperature, touch, and pressure.**

❖ The parietal peritoneum lining the **anterior abdominal wall** is supplied by the lower six thoracic and first lumbar nerves.

❖ The **central part of the diaphragmatic peritoneum** is supplied by the phrenic nerves; **peripherally**, the diaphragmatic peritoneum is supplied by the lower six thoracic nerves

❖ The **parietal peritoneum** in the **pelvis** is mainly supplied by the obturator nerve, a branch of the lumbar plexus.



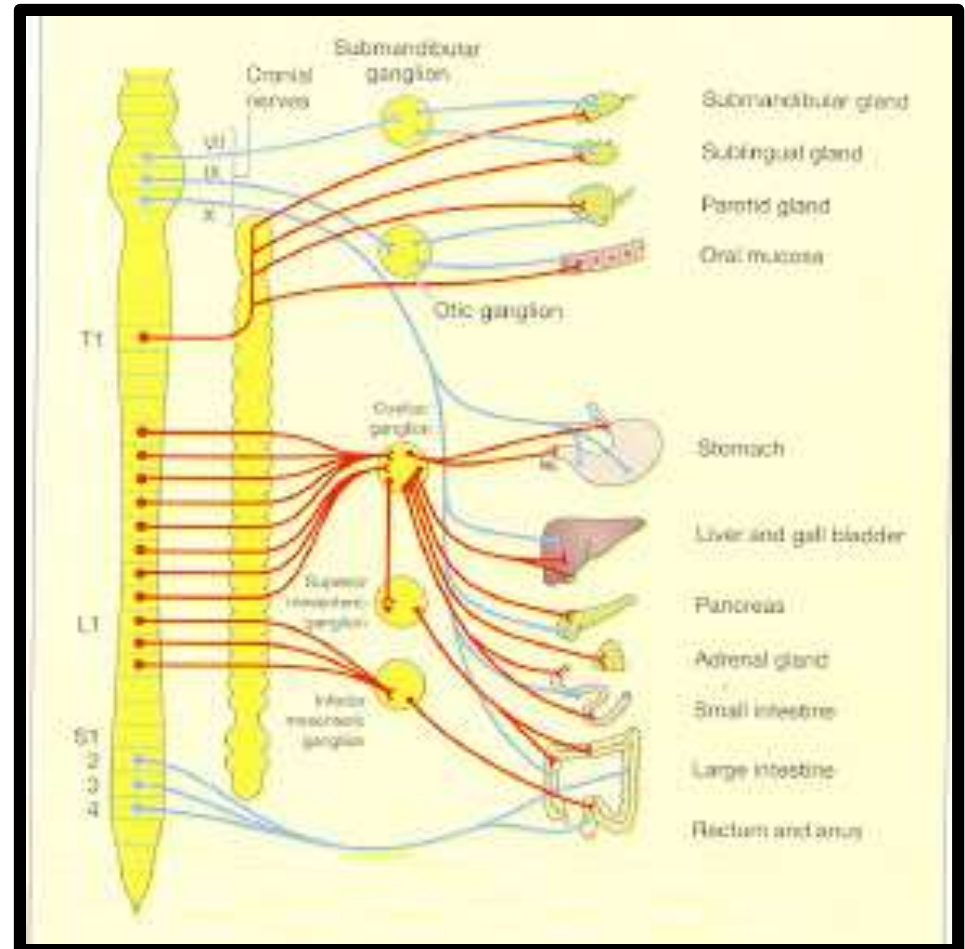
Nerve Supply of the Peritoneum

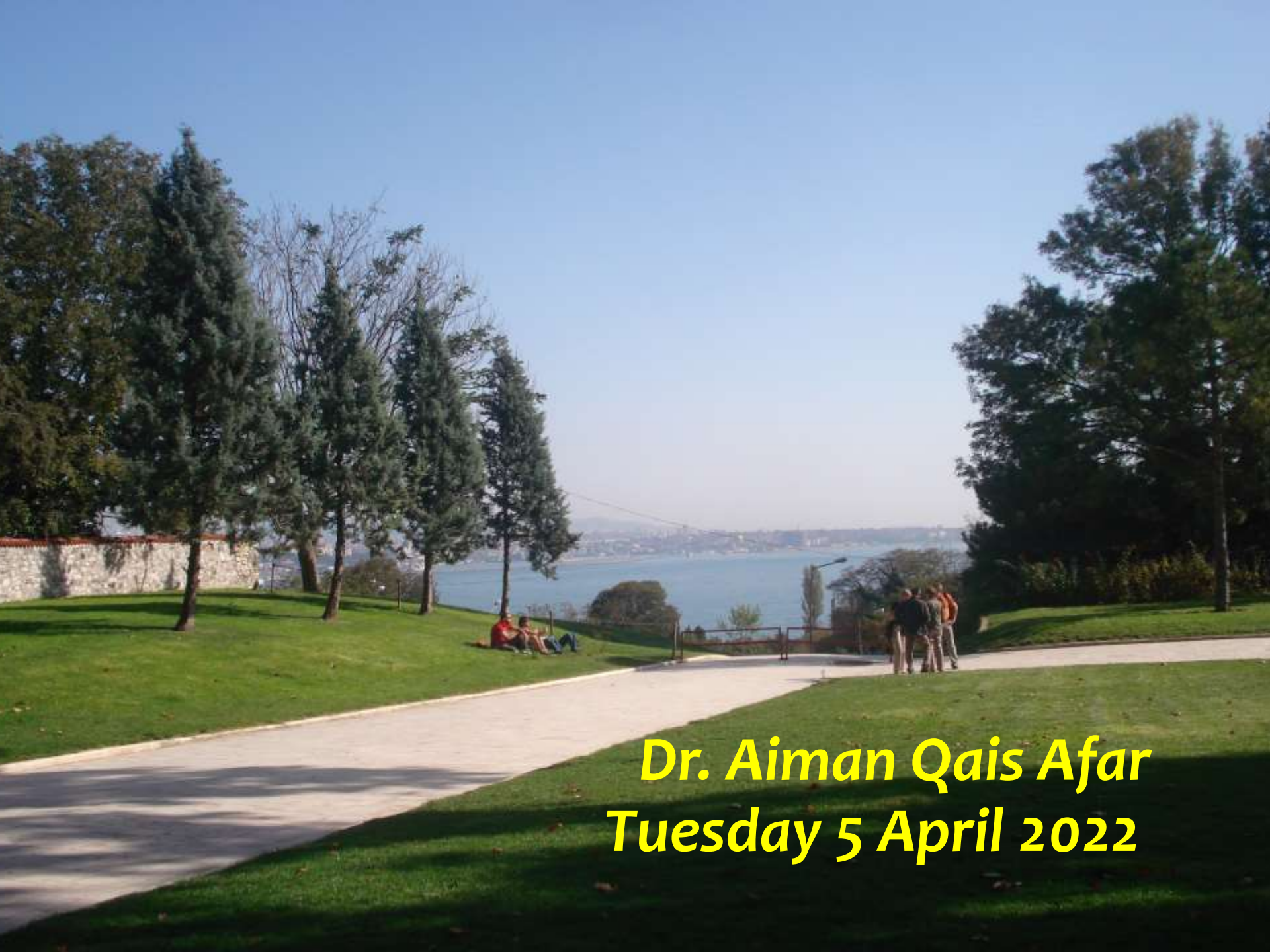
❖ The **visceral peritoneum** is sensitive only to stretch and tearing and is not sensitive to touch, pressure, or temperature

❖ It is supplied by **autonomic afferent nerves** that supply the viscera or are traveling in the mesenteries.

❖ **Overdistention of a viscus** leads to the sensation of pain.

❖ The mesenteries of the small and large intestines are sensitive to **mechanical stretching**





Dr. Aiman Qais Afar
Tuesday 5 April 2022