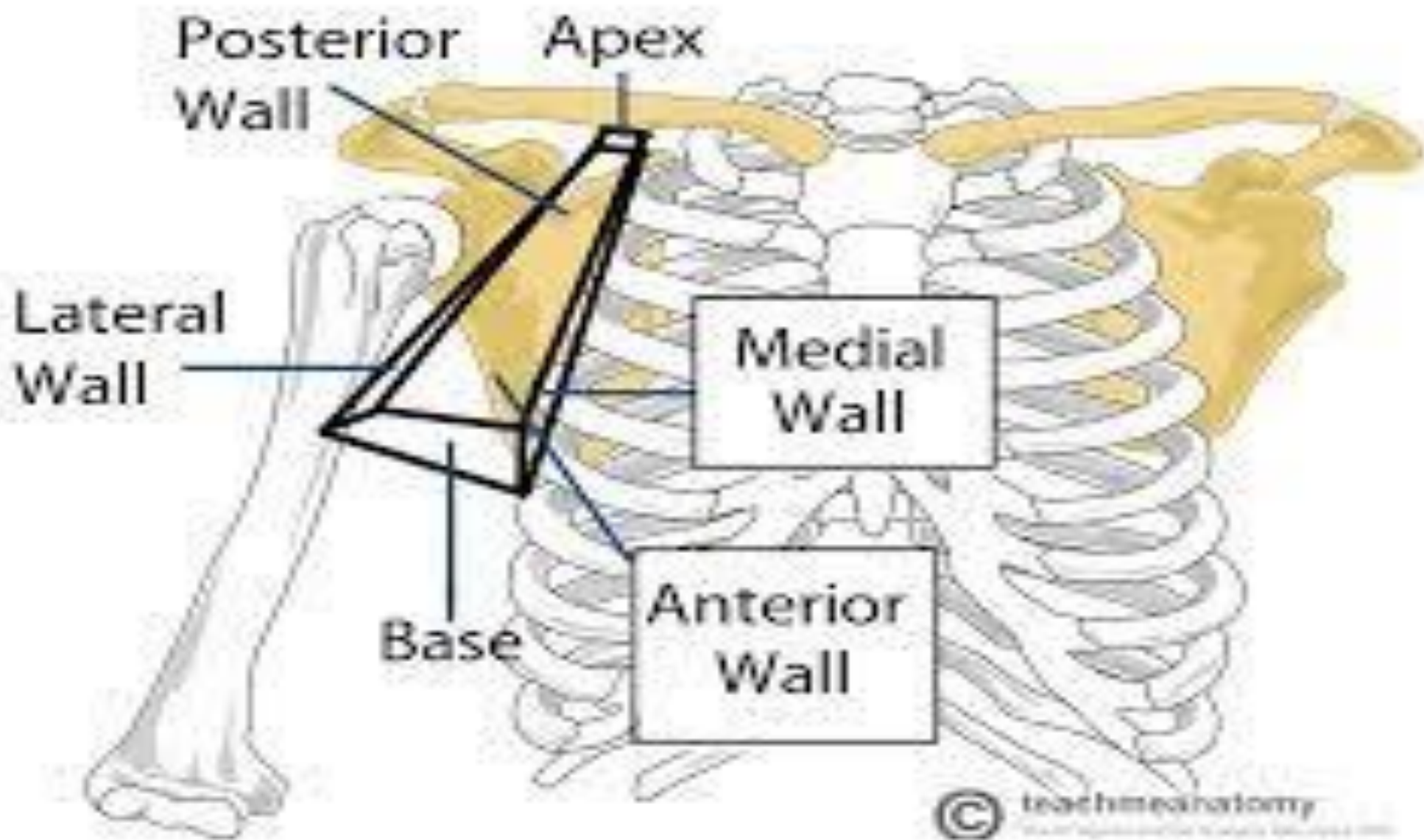
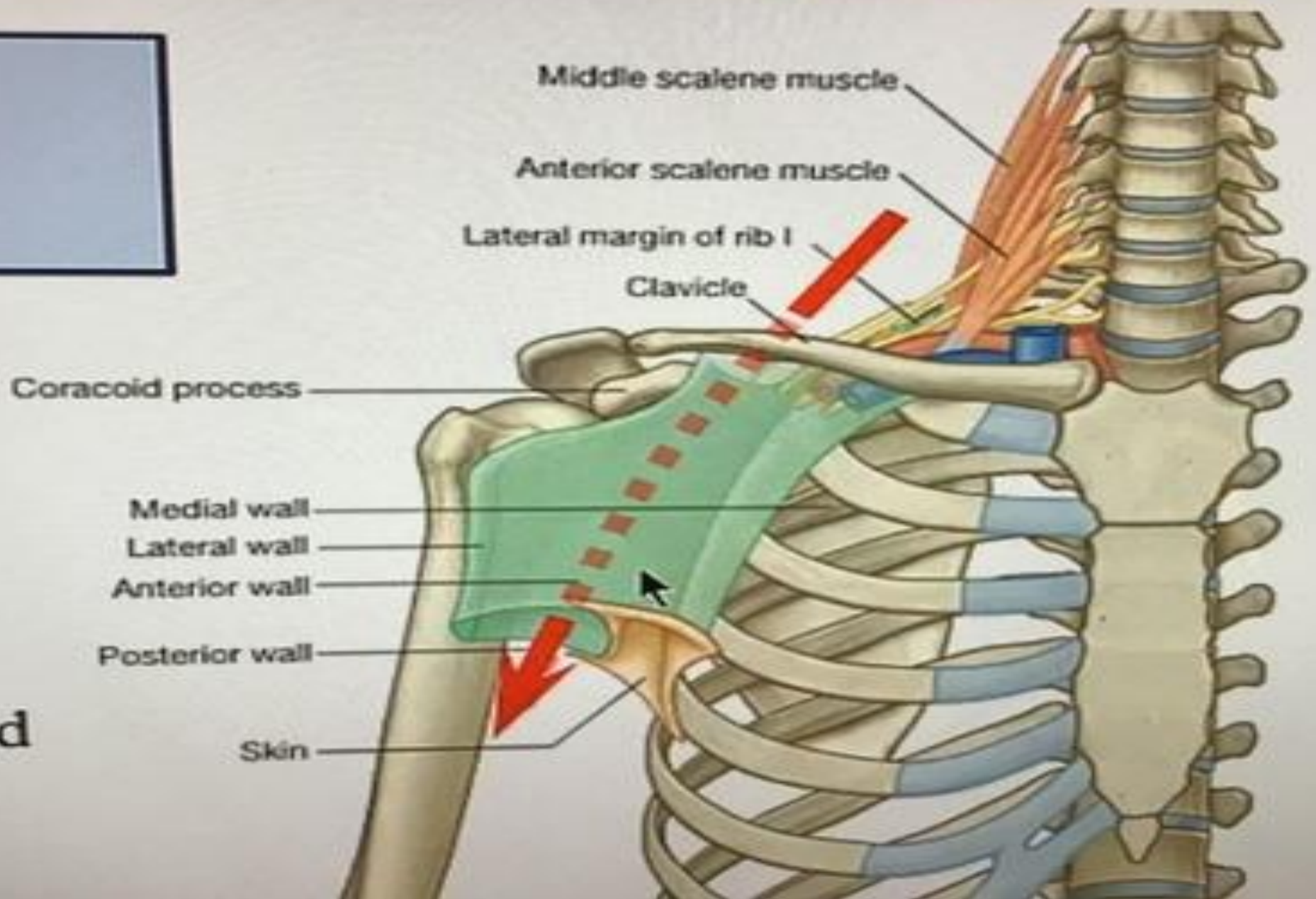


AXILLA

DR. DALIA M. BIRAM

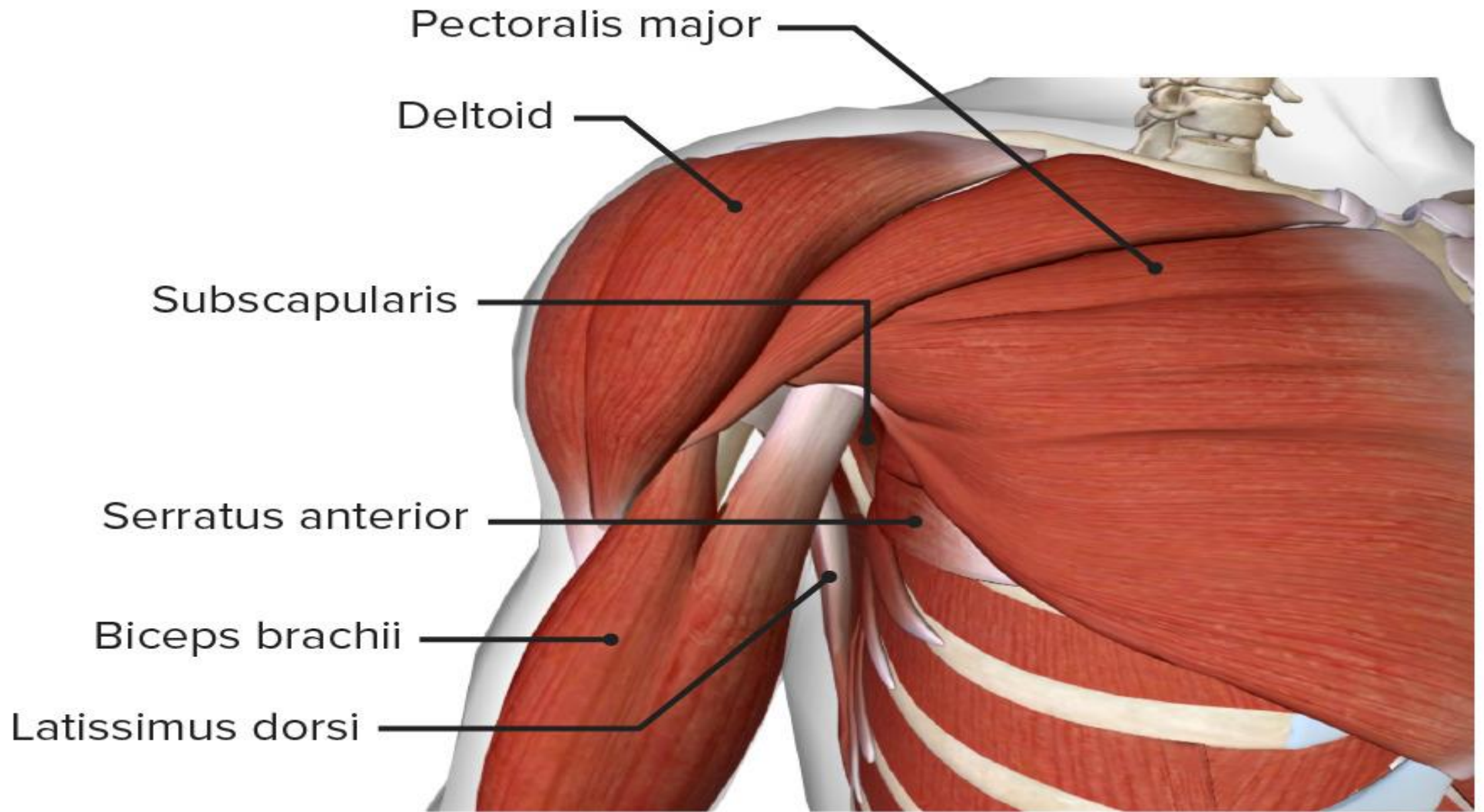


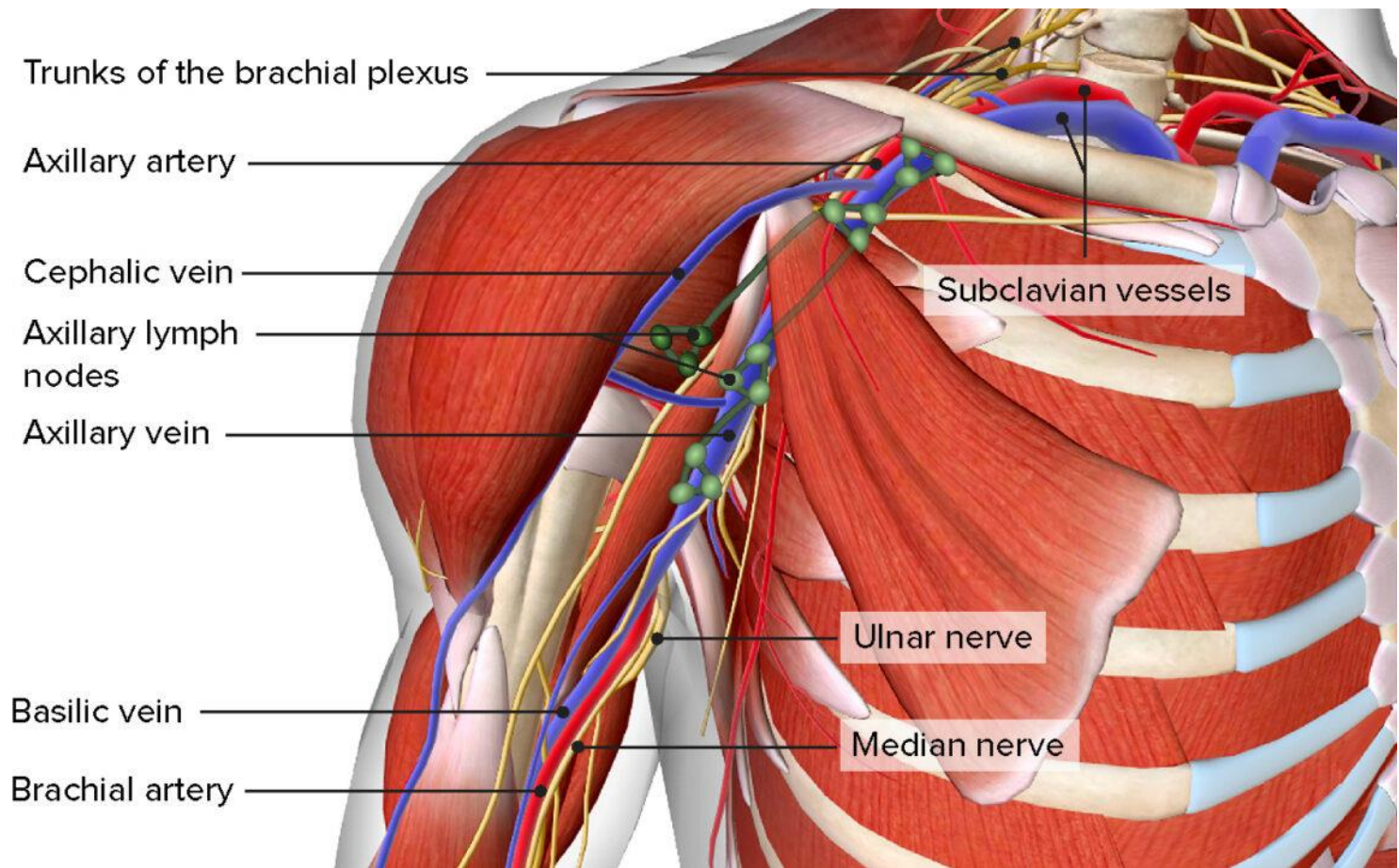
lla



sels and







Trunks of the brachial plexus

Axillary artery

Cephalic vein

Axillary lymph nodes

Axillary vein

Basilic vein

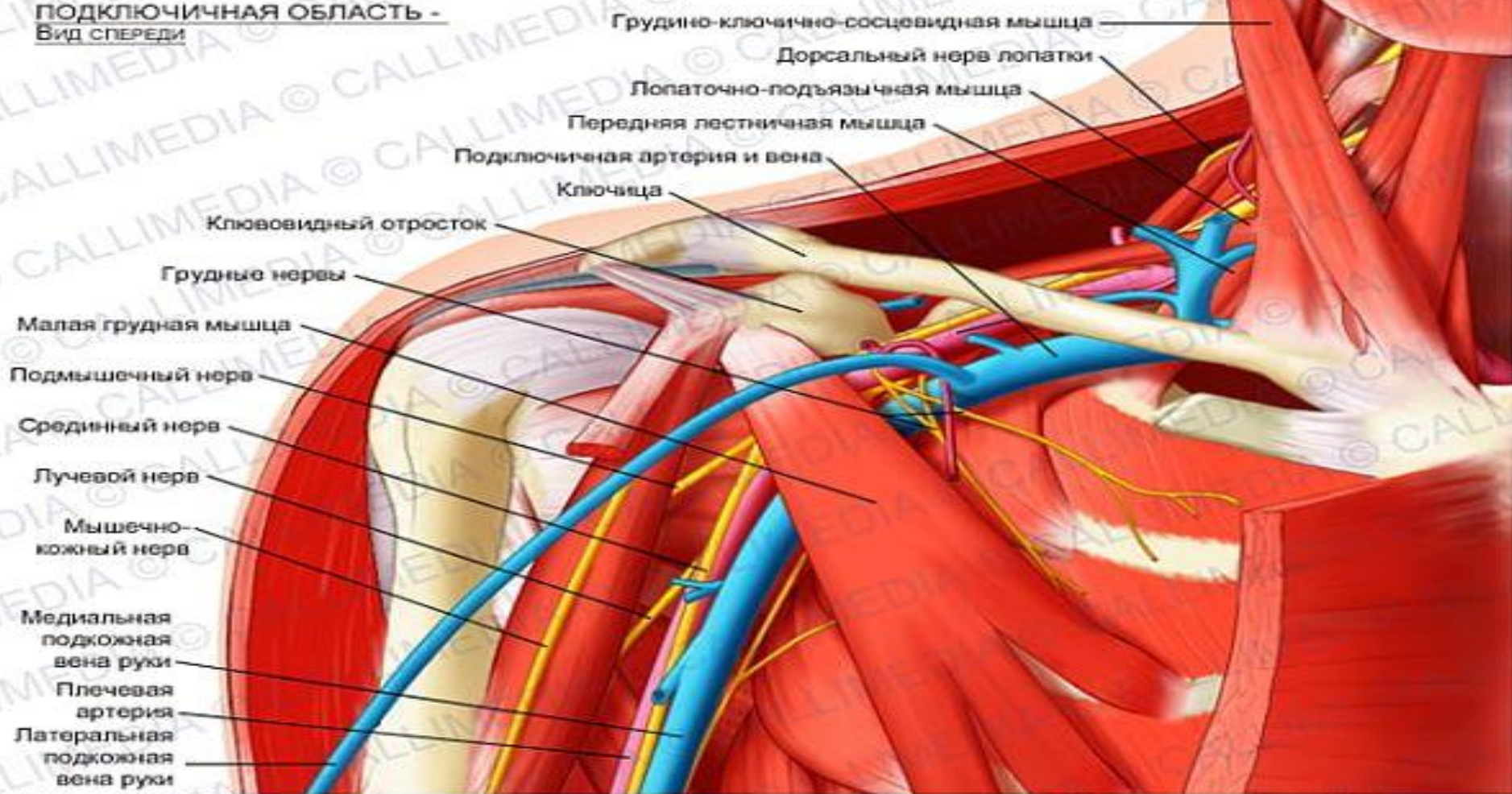
Brachial artery

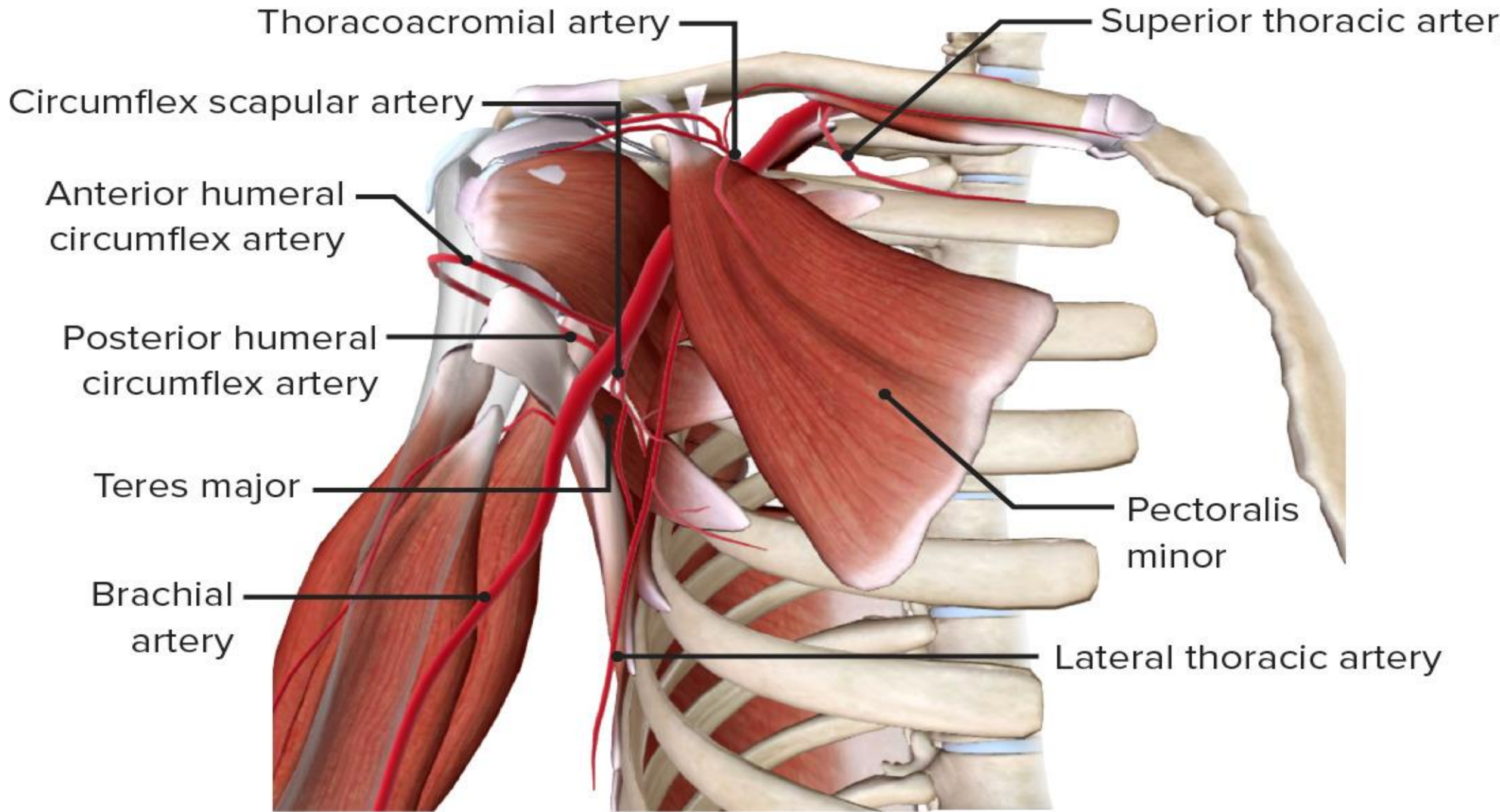
Subclavian vessels

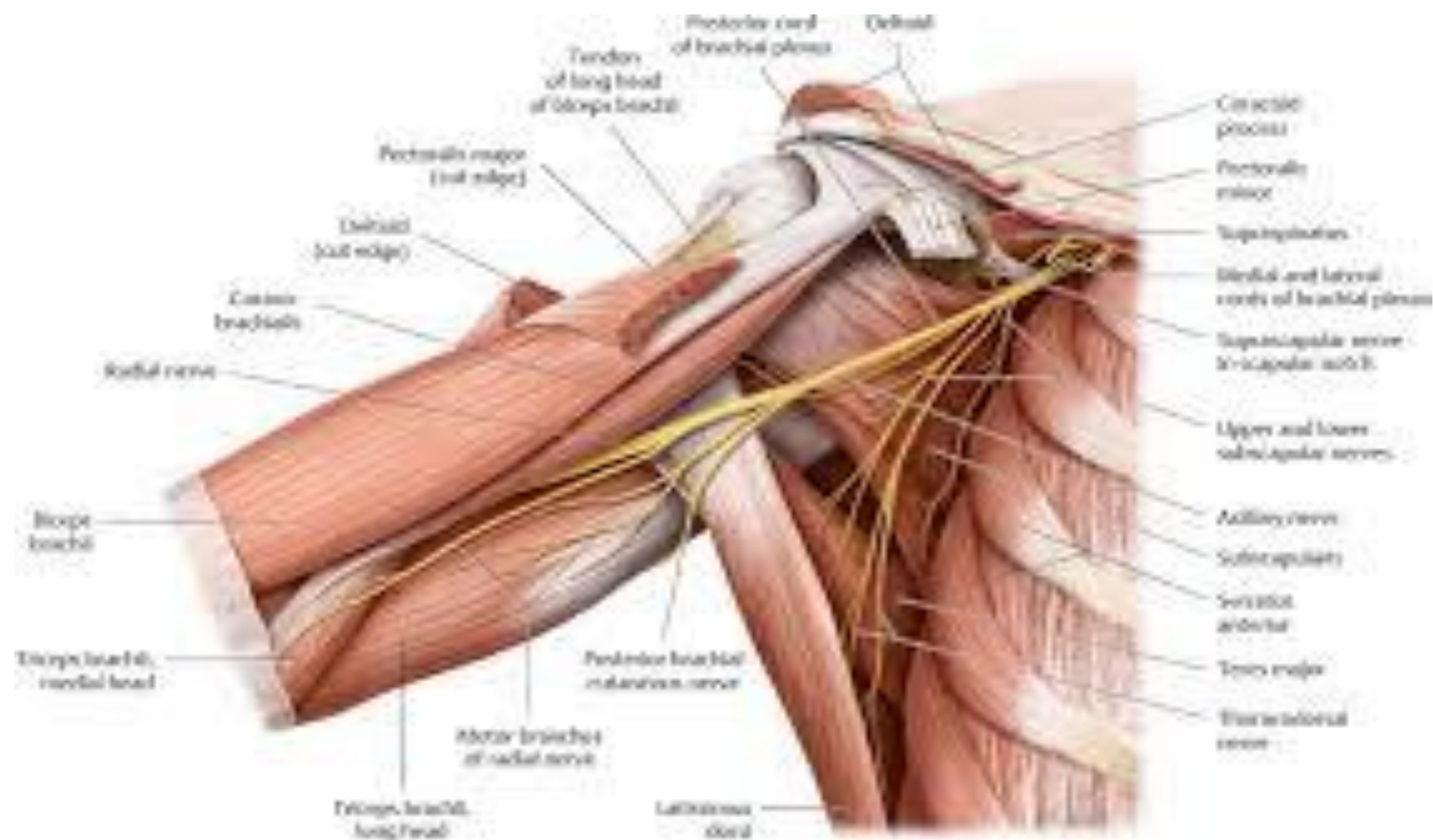
Ulnar nerve

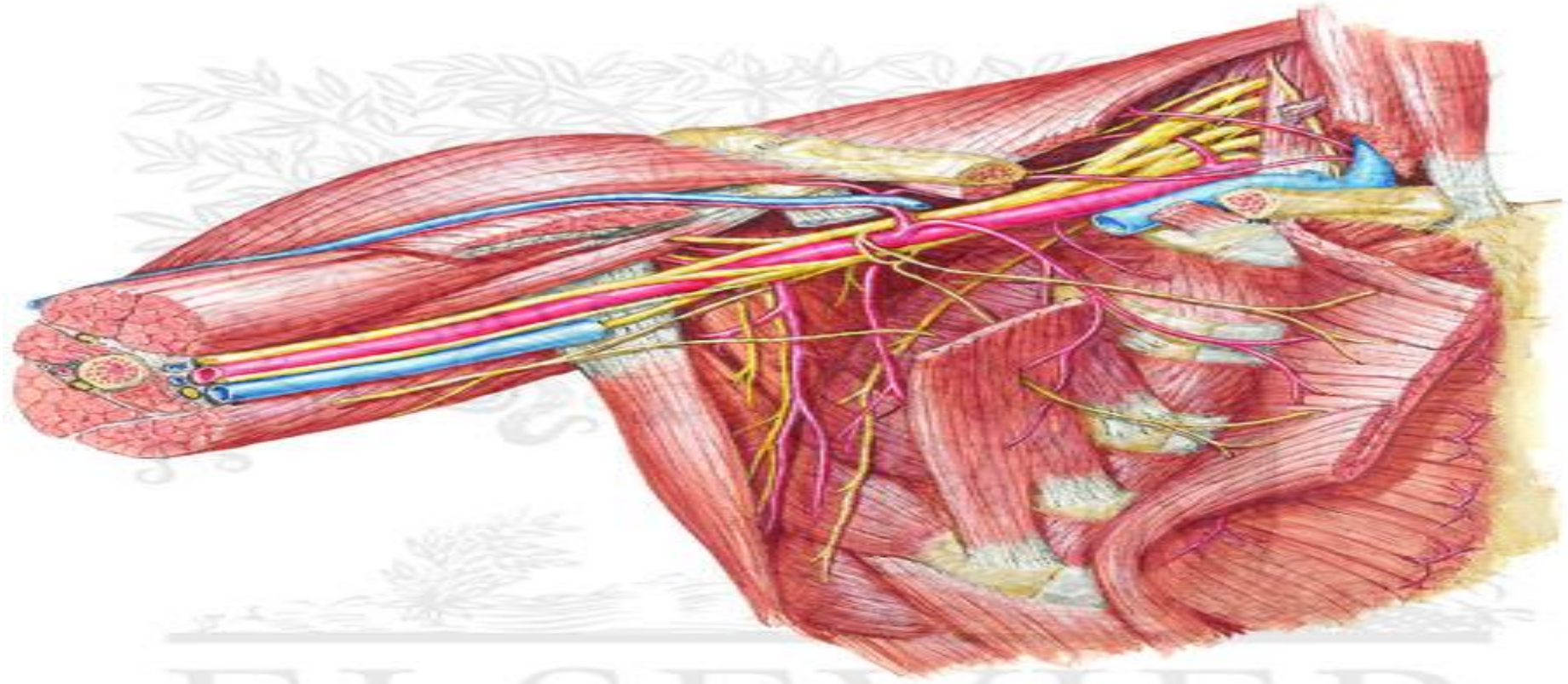
Median nerve

ПОДКЛЮЧИЧНАЯ ОБЛАСТЬ -
Вид СПЕРЕДИ









F. Netter

ELSEVIER

A.

Scapula

Subscapularis muscle

Intertubular sulcus
of humerus

Intercostal muscles

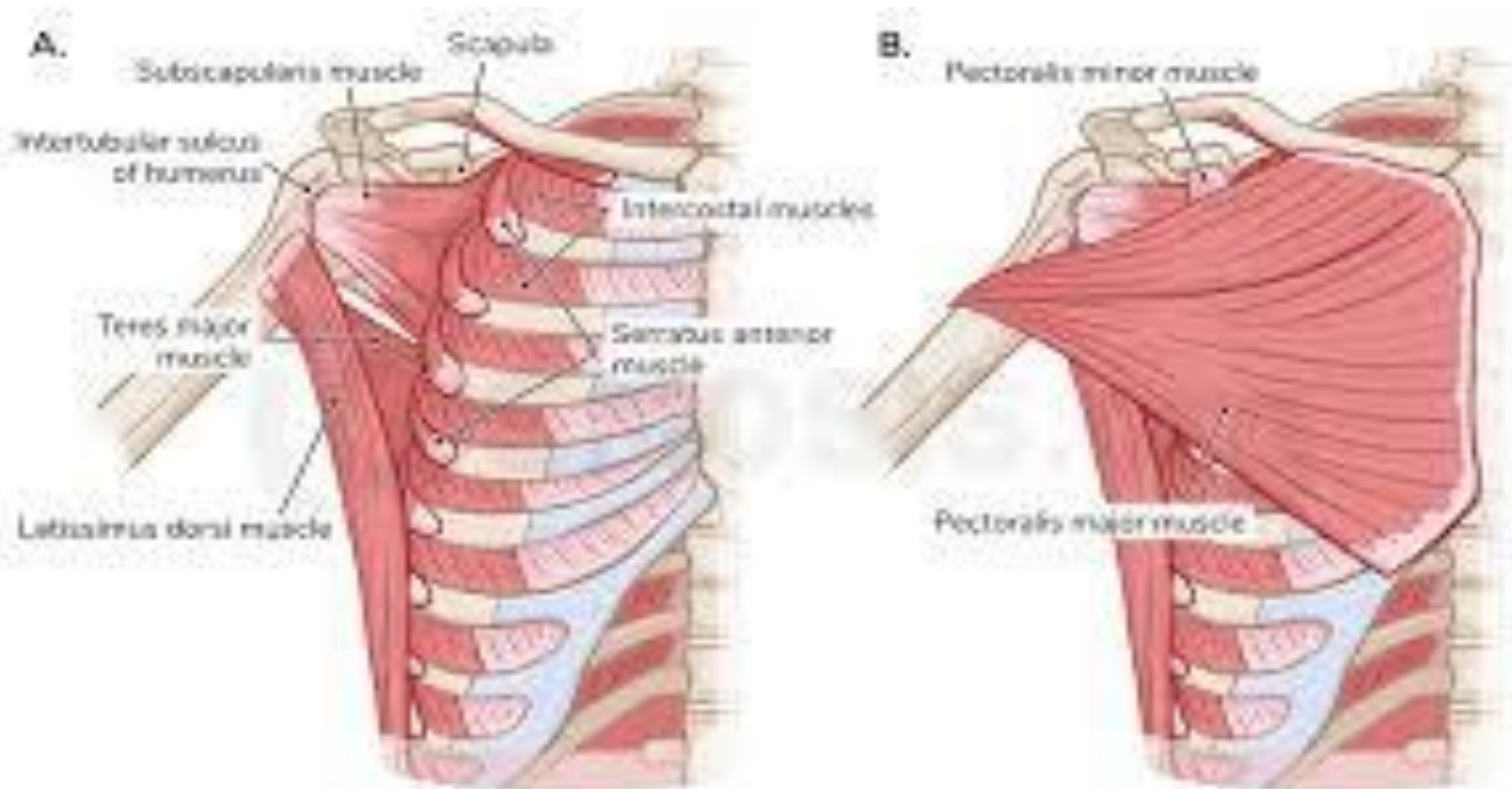
Teres major
muscleSerratus anterior
muscle

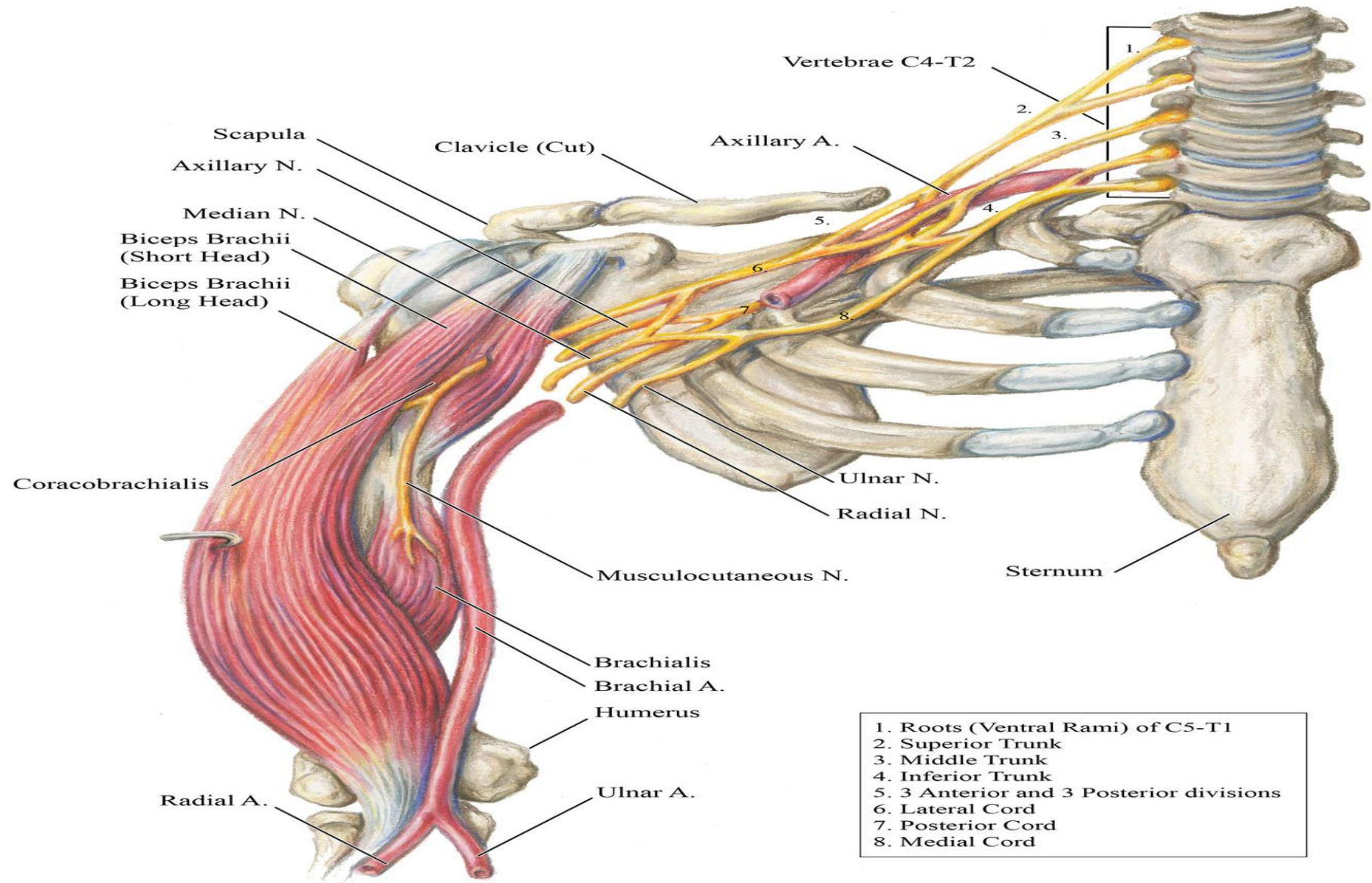
Latissimus dorsi muscle

B.

Pectoralis minor muscle

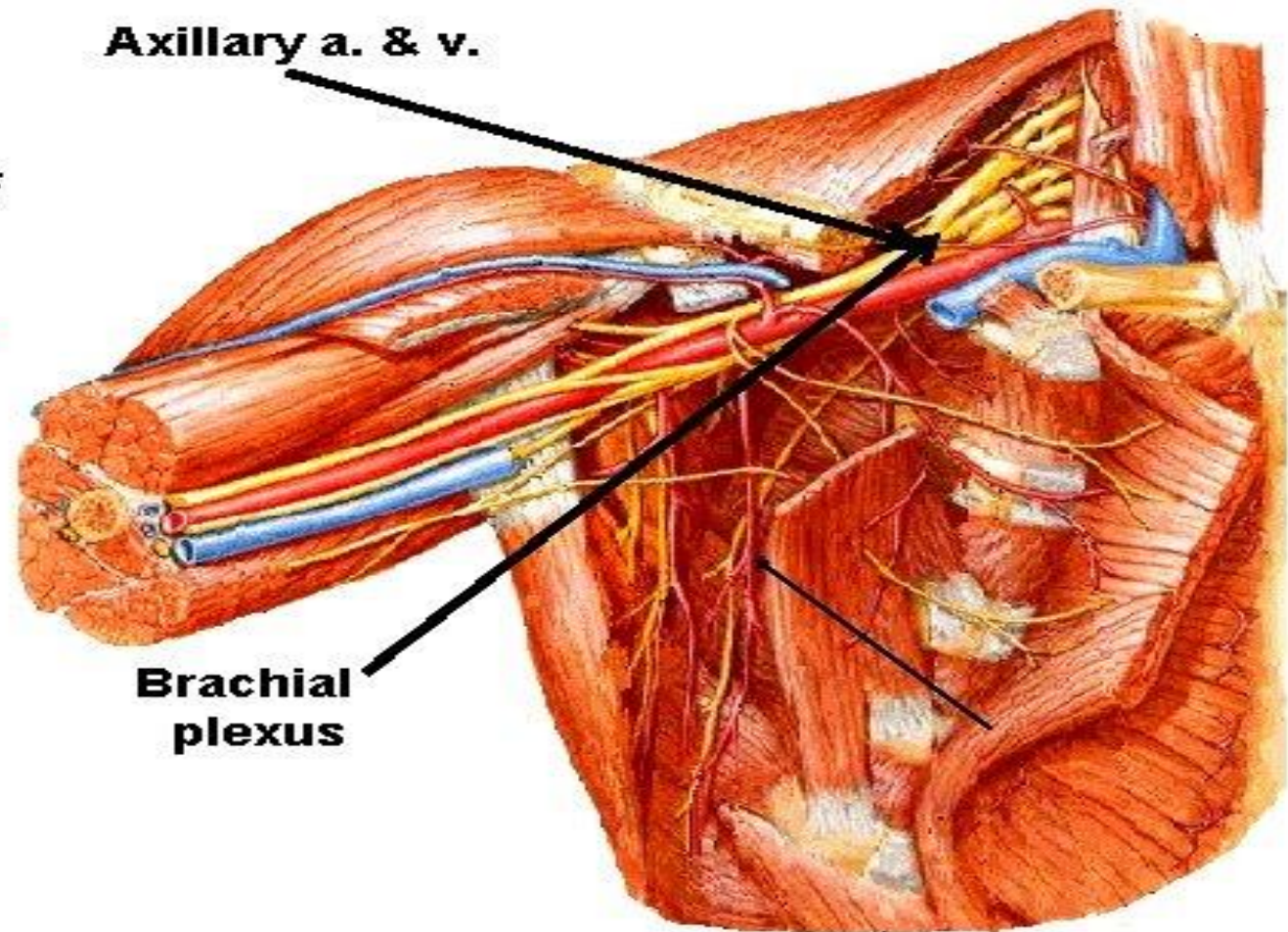
Pectoralis major muscle





Contents of The Axilla

- Cords and branches of the brachial plexus
- Axillary artery and its branches.
- Axillary vein and its tributaries.
- Axillary lymph nodes.
- Axillary lymphatic vessels
- Axillary fat.
- Loose connective tissue.



The neurovascular bundle is enclosed in connective tissue sheath, called '**axillary sheath**'

Brachial Plexus

Nerve roots



- C5
- C6
- C7
- C8
- T1

©MMG 2008

Axillary

Musculocutaneous

Ulnar

Radial

Median

