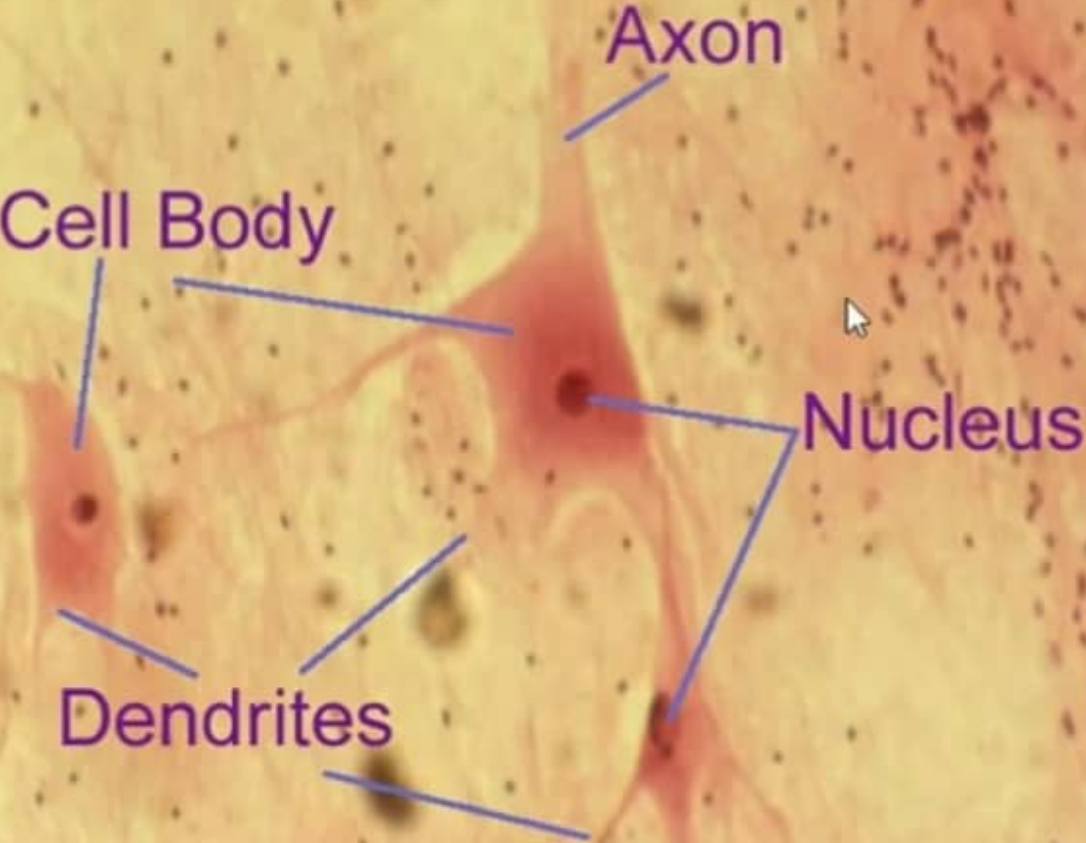
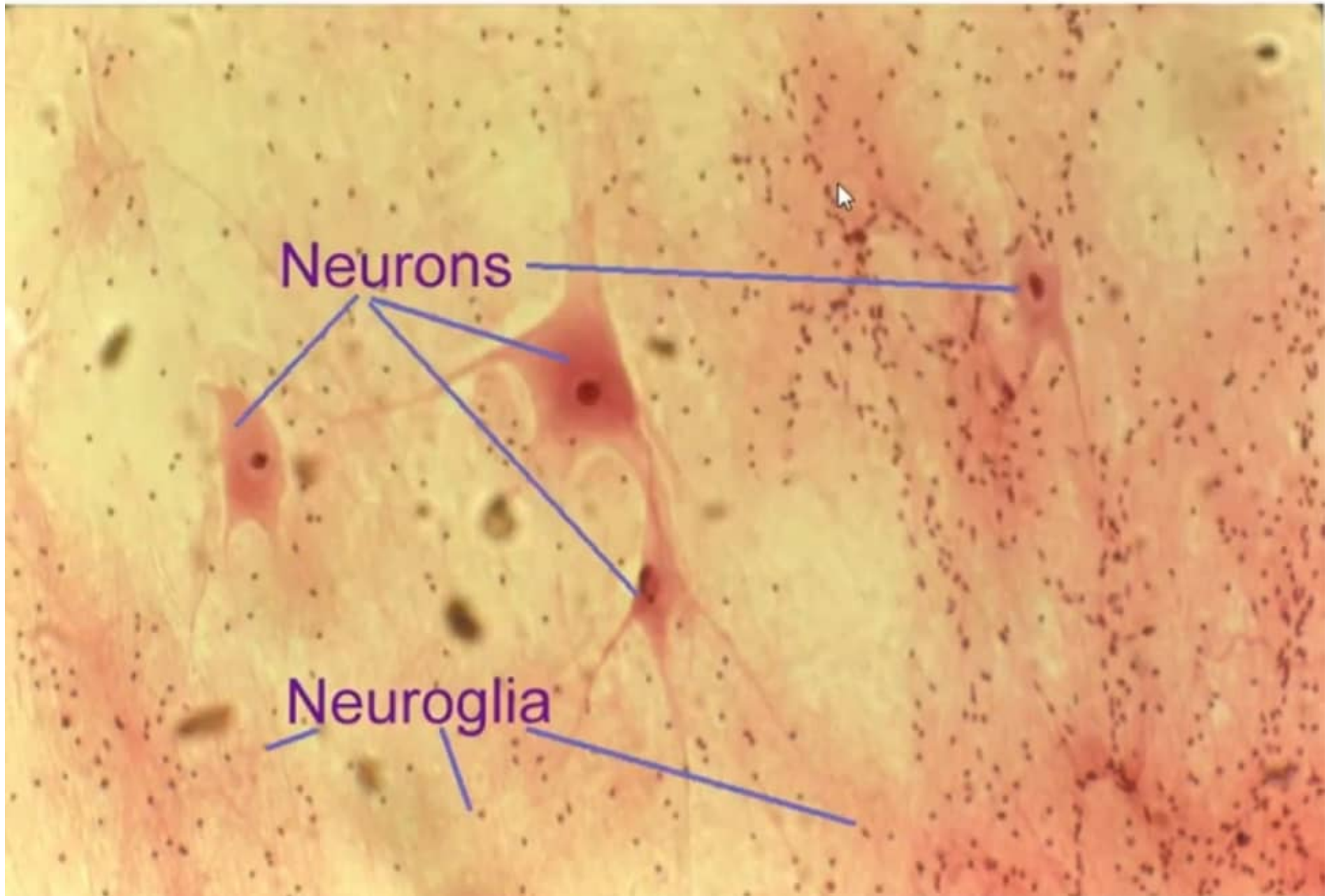


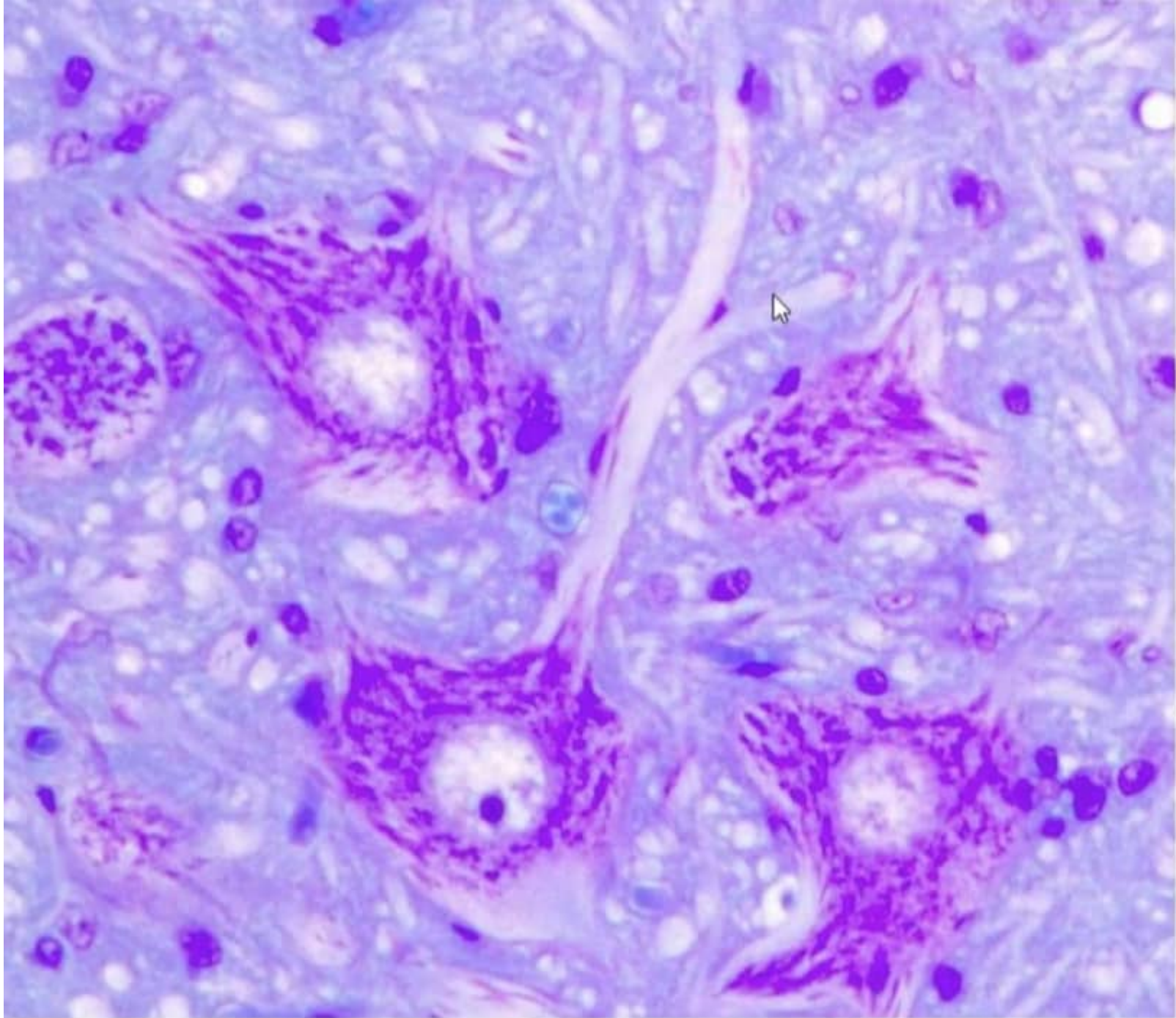


Neuron Parts

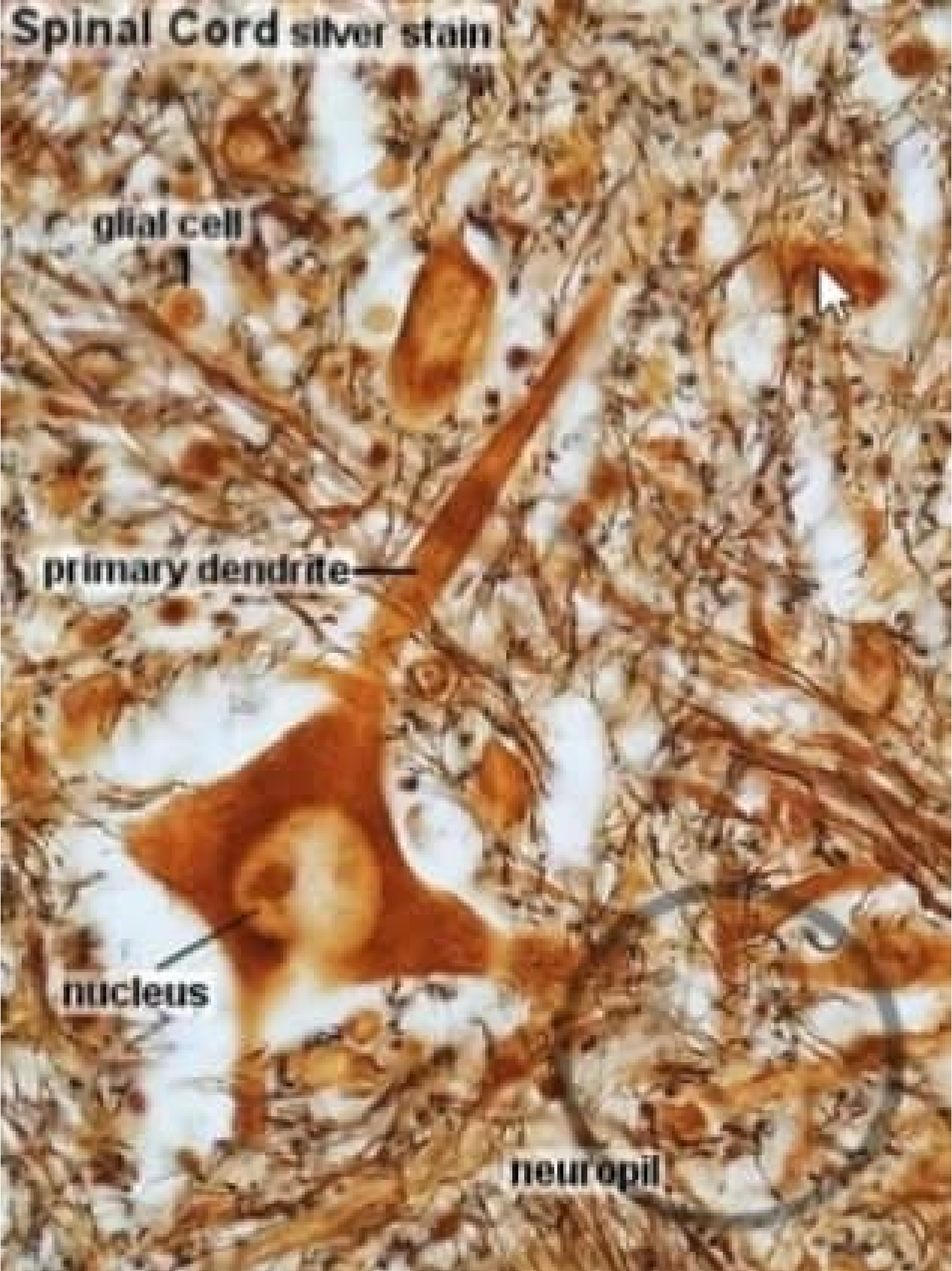


Neuron and Neuroglia

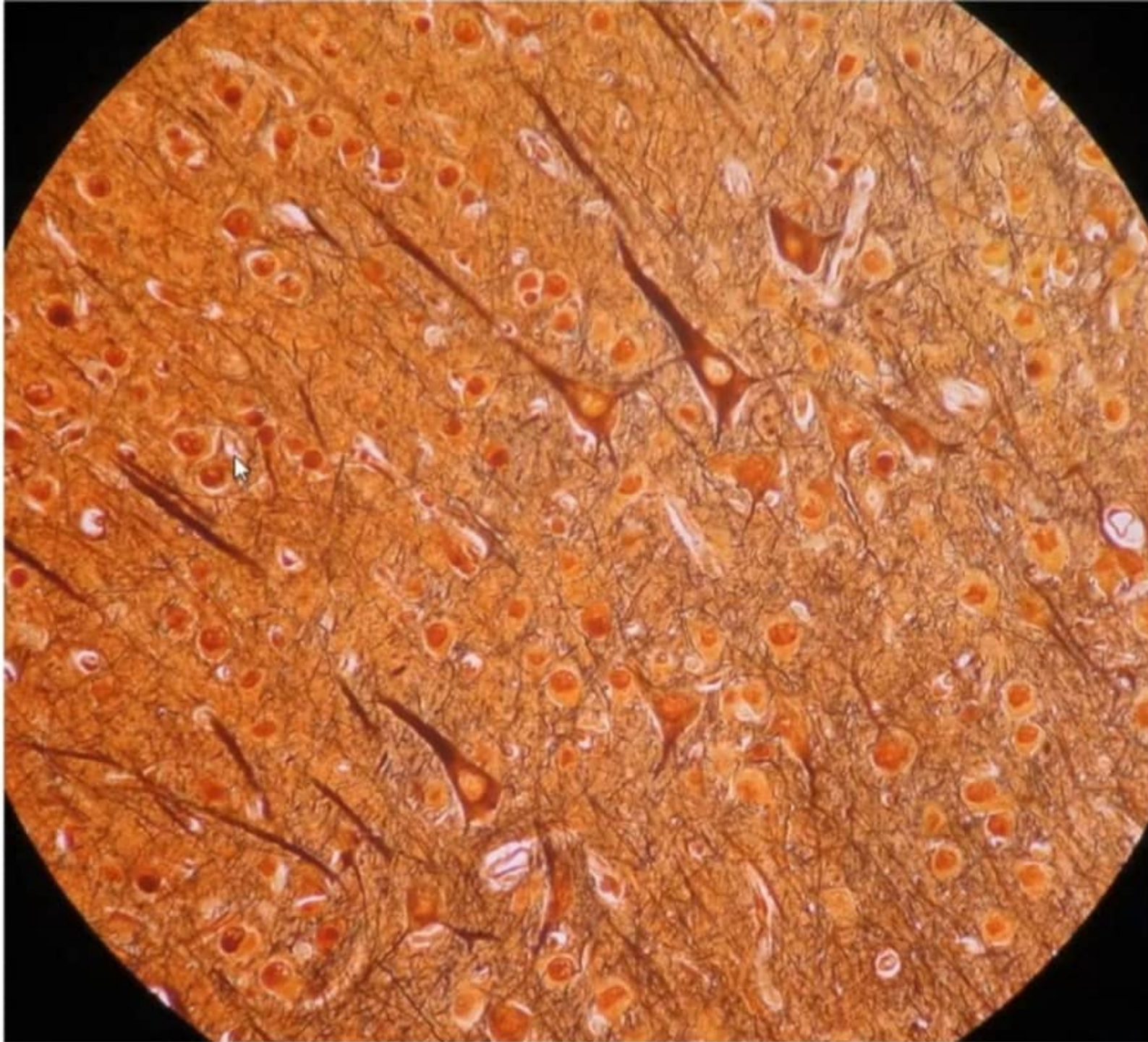




Spinal Cord silver stain







Peripheral Nerve H&E



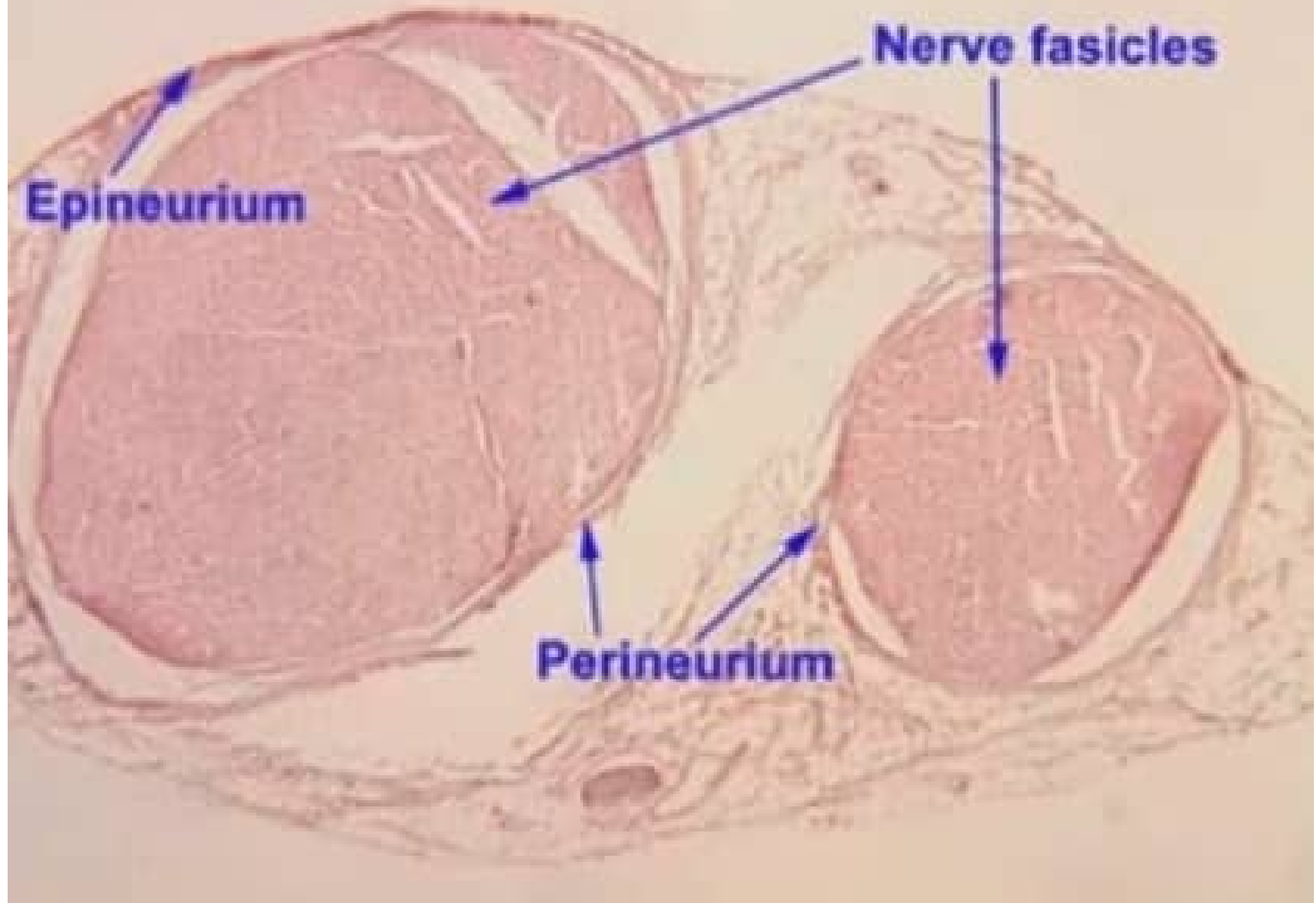
nerve fibres
(axons & myelin sheaths)

The image shows a histological section of a peripheral nerve stained with hematoxylin and eosin (H&E). The nerve is composed of numerous nerve fibers, which are bundles of axons surrounded by myelin sheaths. The myelin sheaths appear as clear, pale spaces between the darker-stained axons. The Schwann cell nuclei are visible as small, dark purple spots scattered throughout the nerve tissue. A mouse cursor is visible in the upper left quadrant, and a yellow corner marker is in the top right.

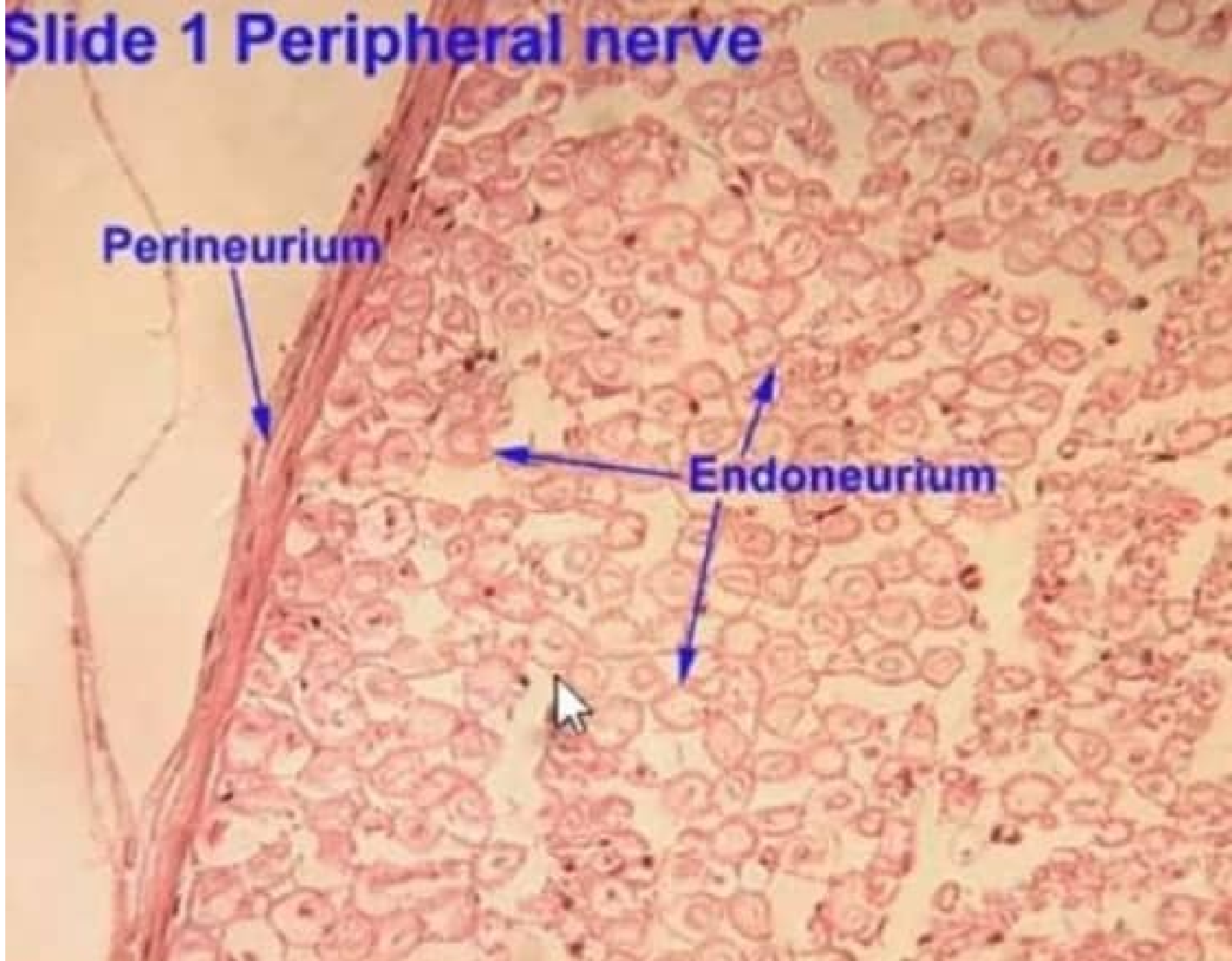
Schwann cell
nuclei



Slide 1 Peripheral nerve



Slide 1 Peripheral nerve



Peripheral Nerve H&E

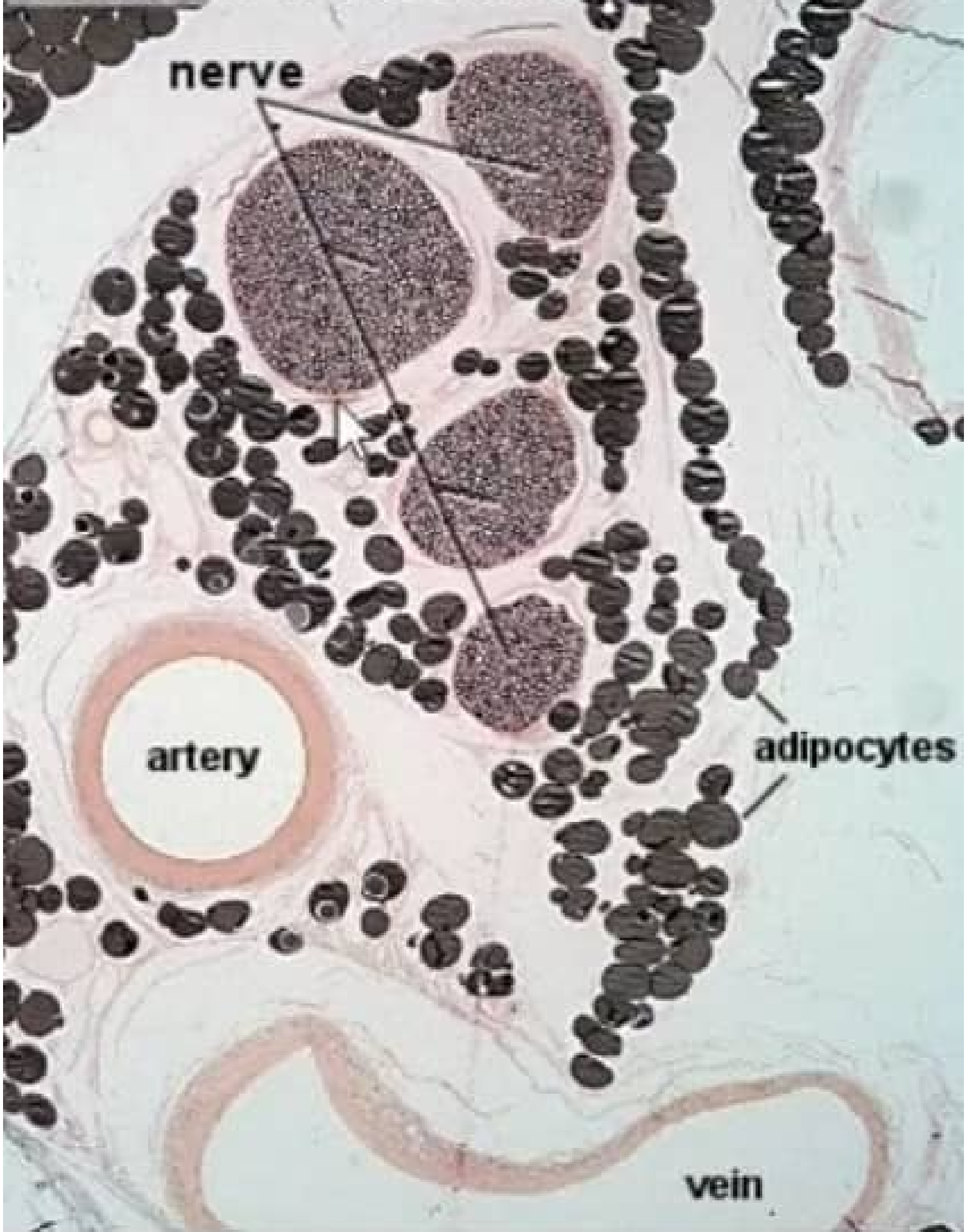
perineurium

nerve fibres

axon

**remnants of
the myelin sheath**

Peripheral Nerve osmium



nerve

artery

adipocytes

vein

**Peripheral Nerve
osmium**

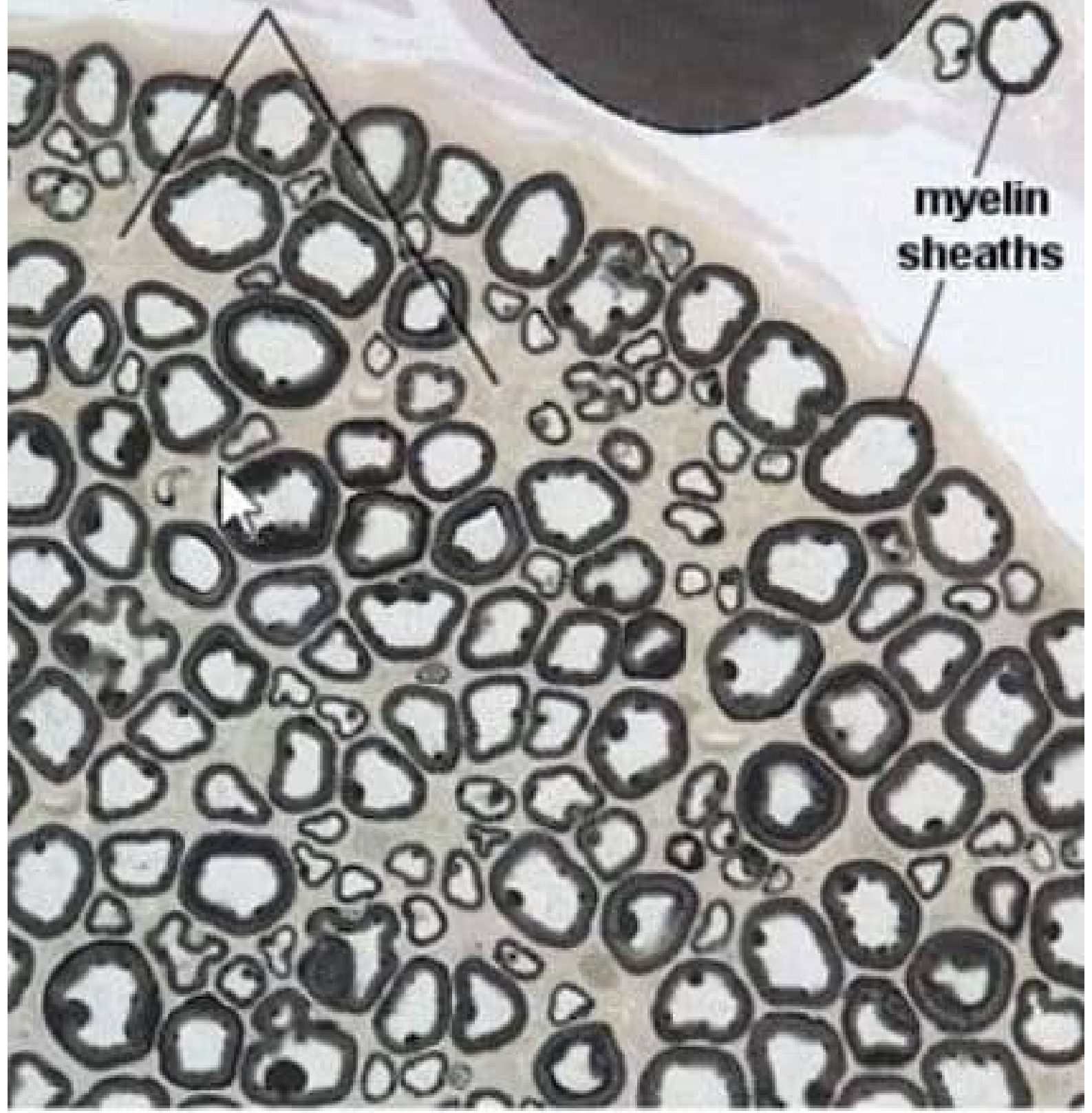


adipocyte (lipid droplet)

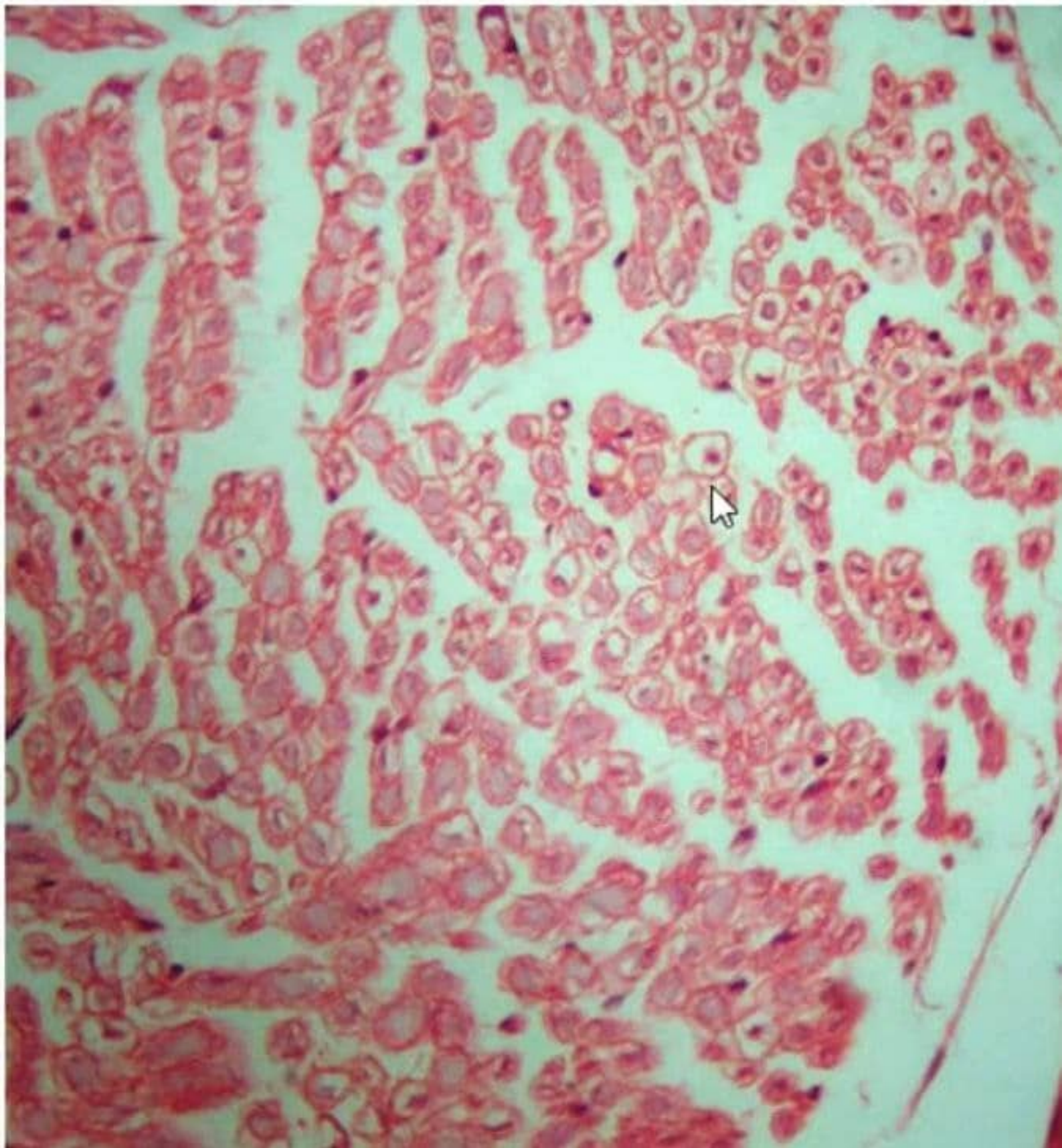
**endoneurium and
unmyelinated axons**



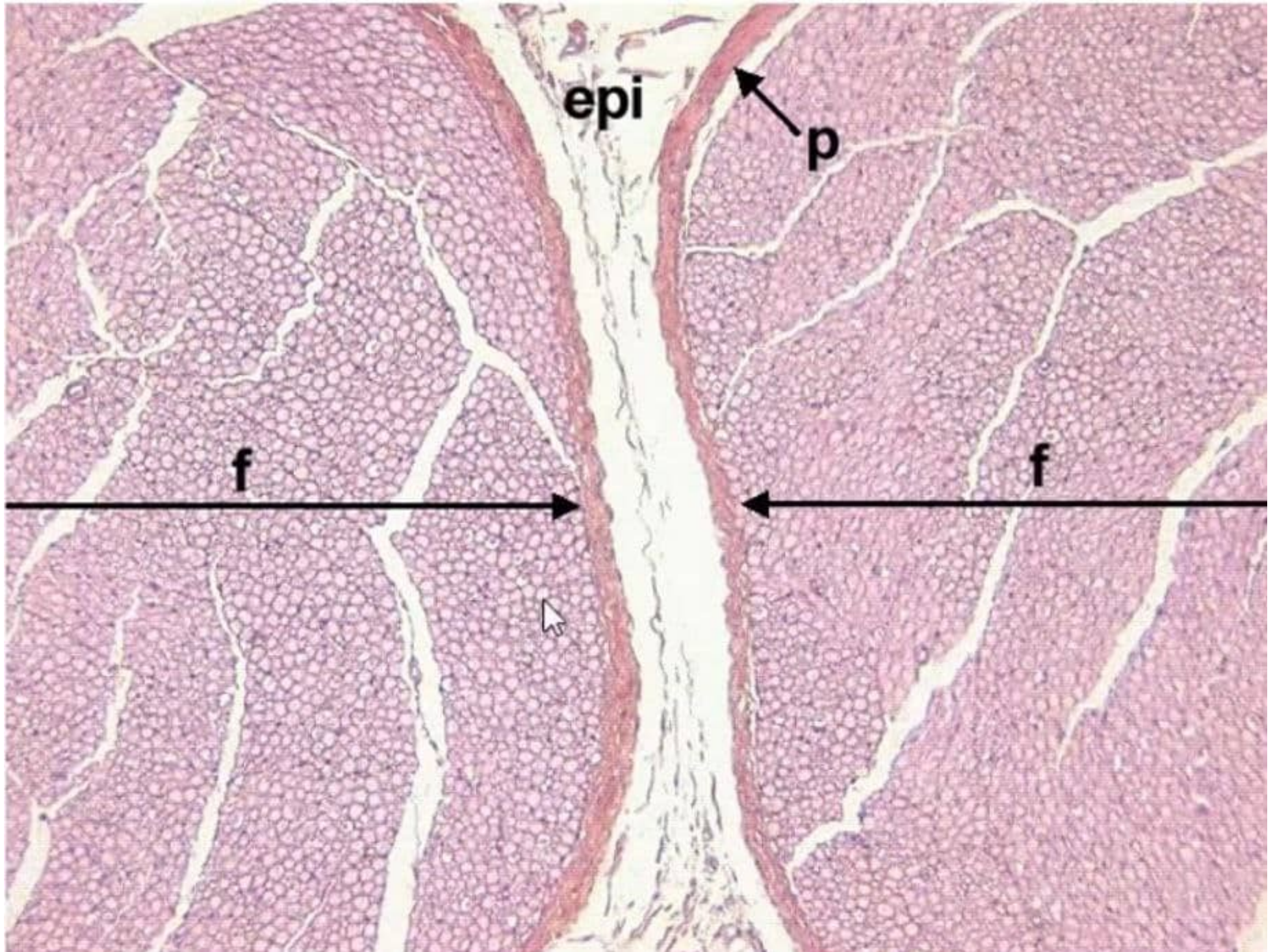
**myelin
sheaths**

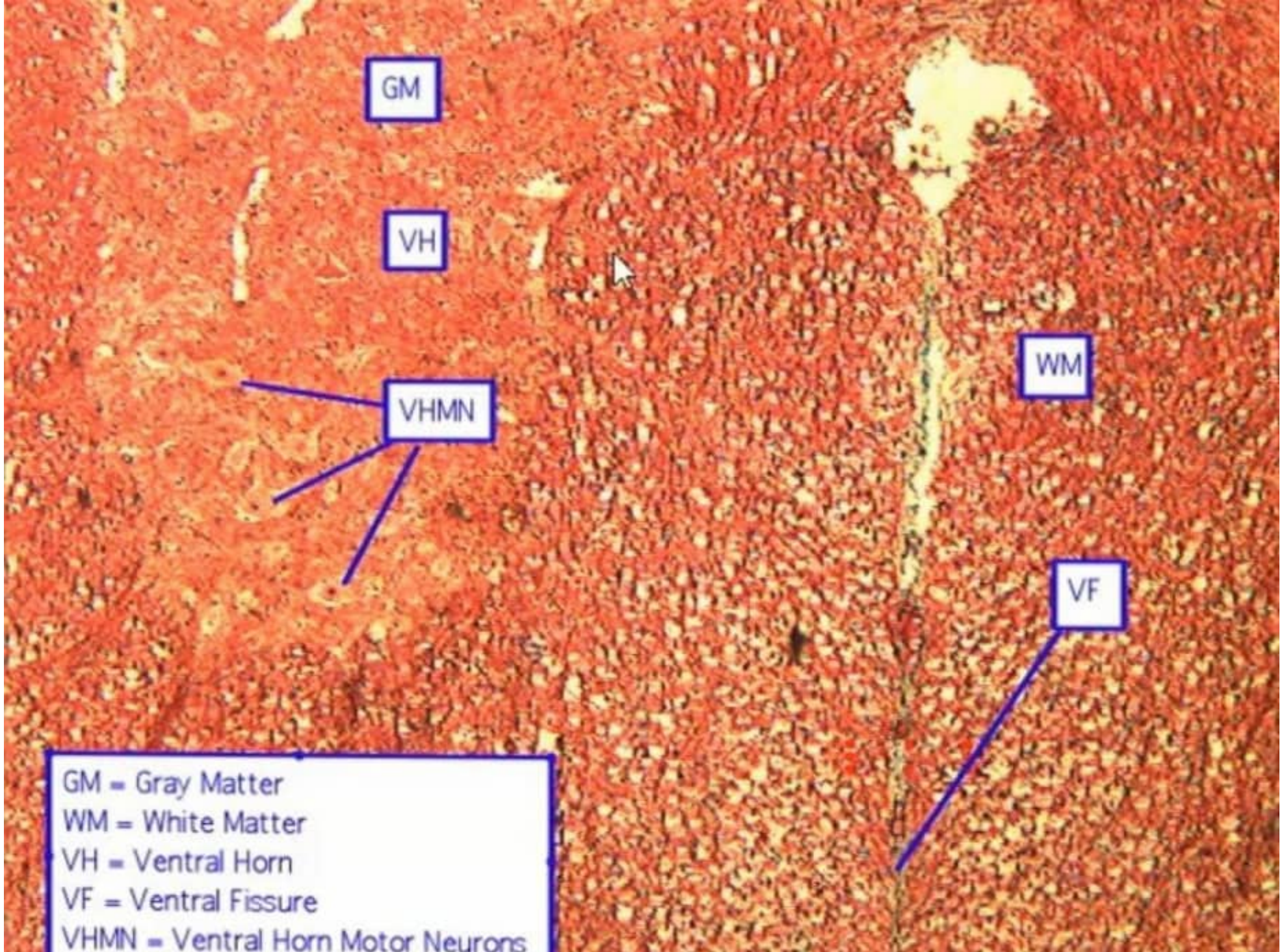




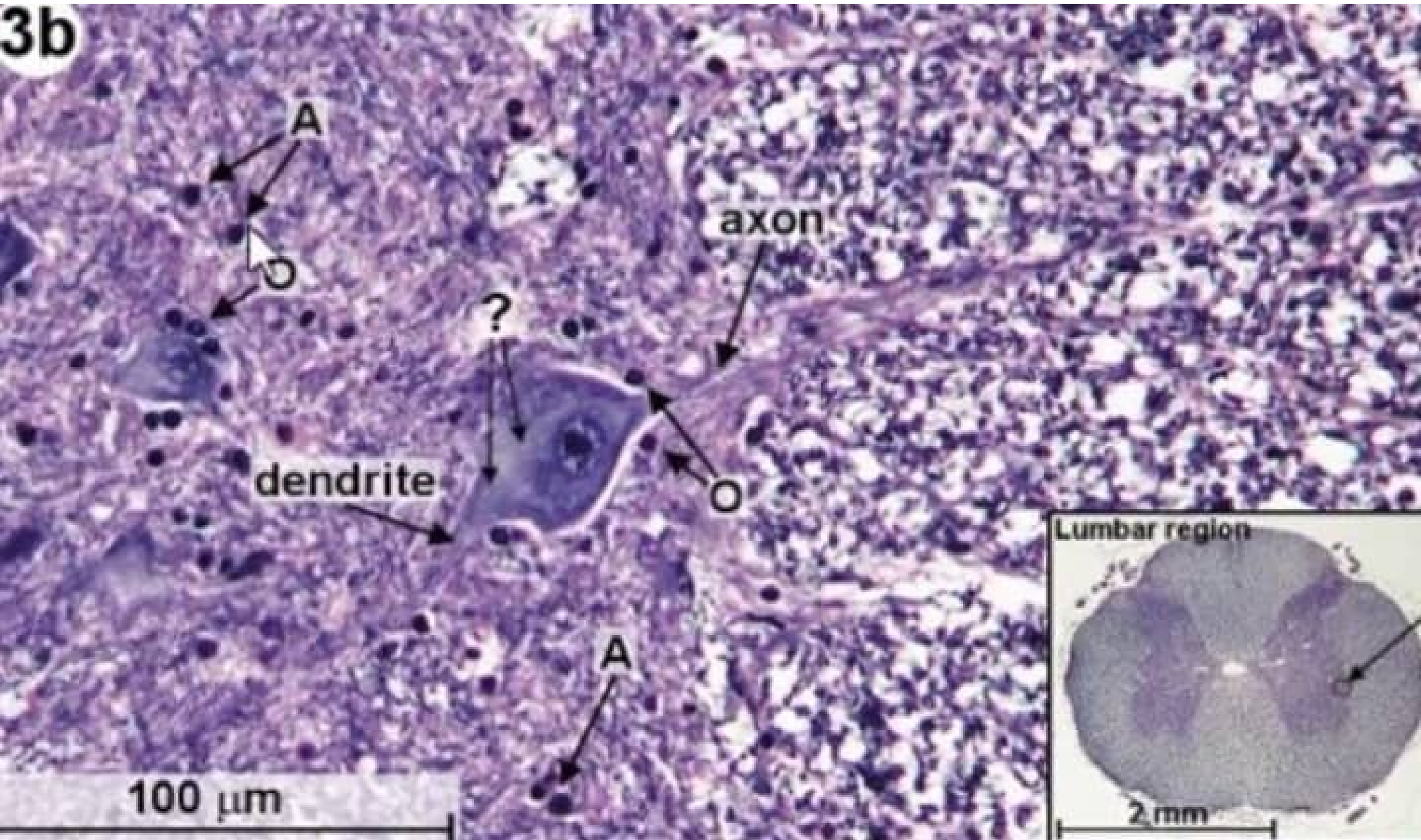








3b



Spinal Cord H&E

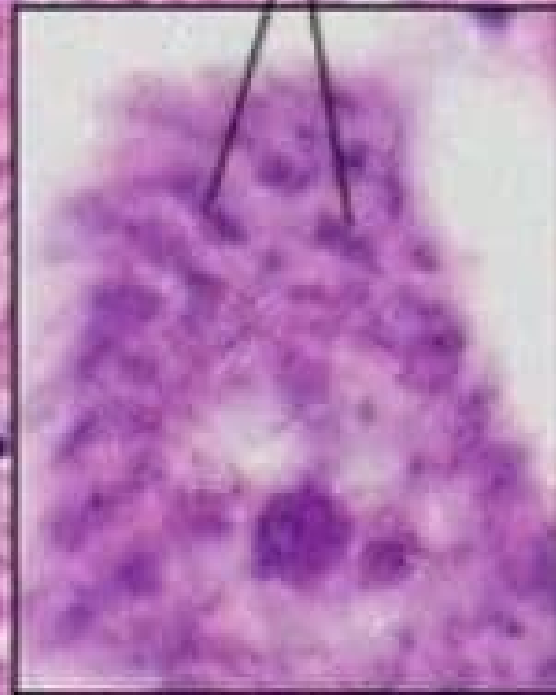
grey matter

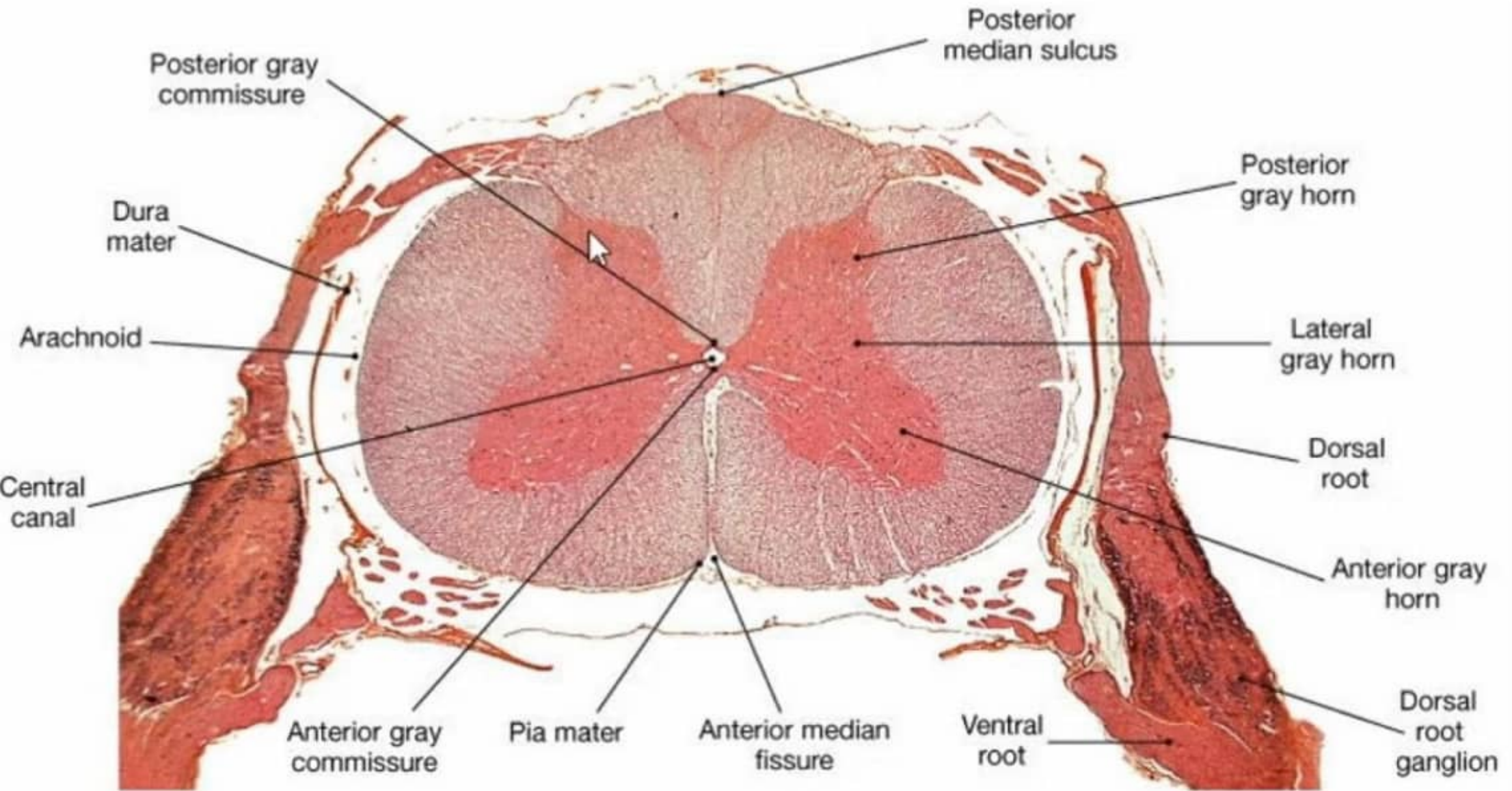
neurones

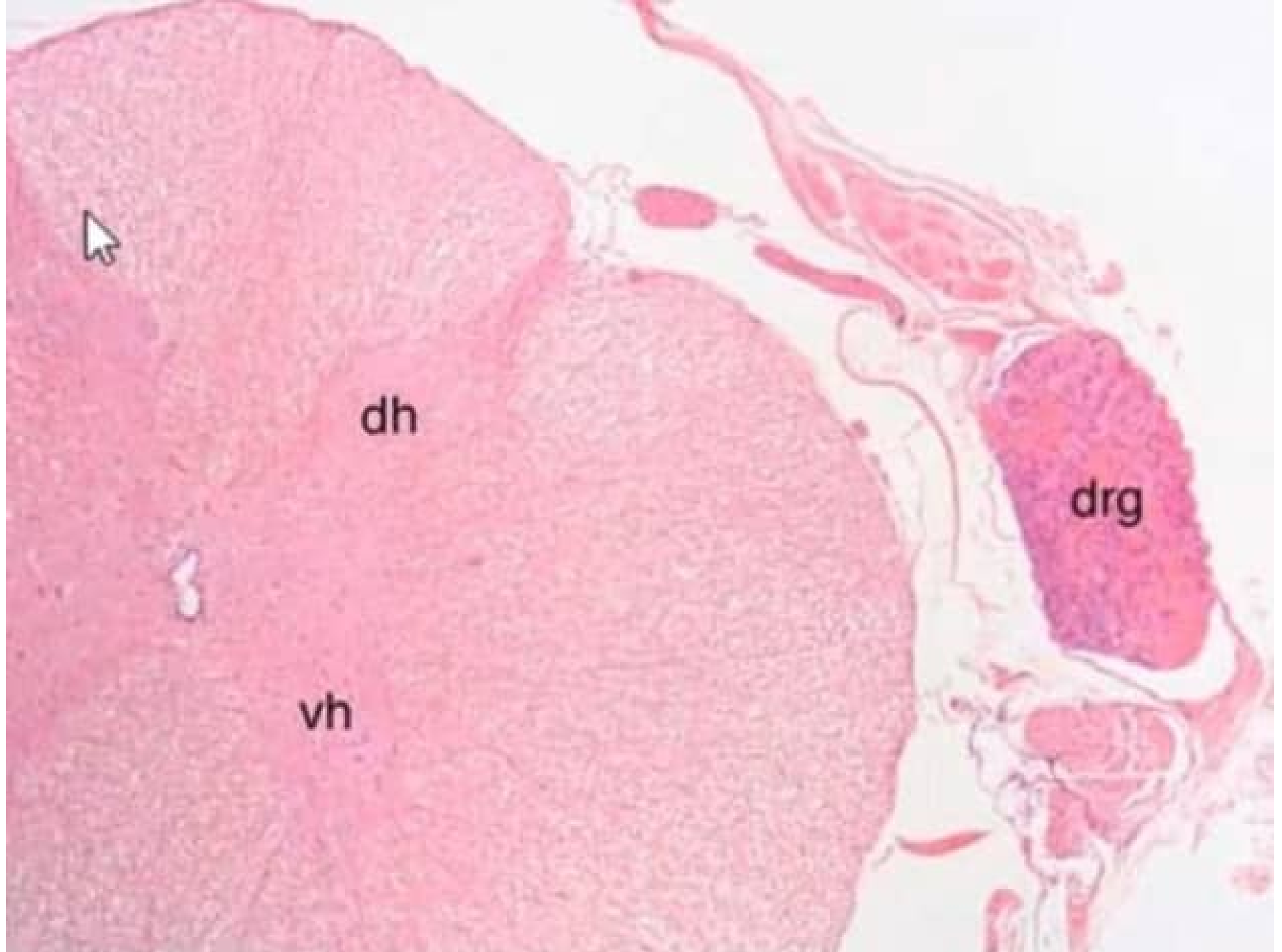
neuropil

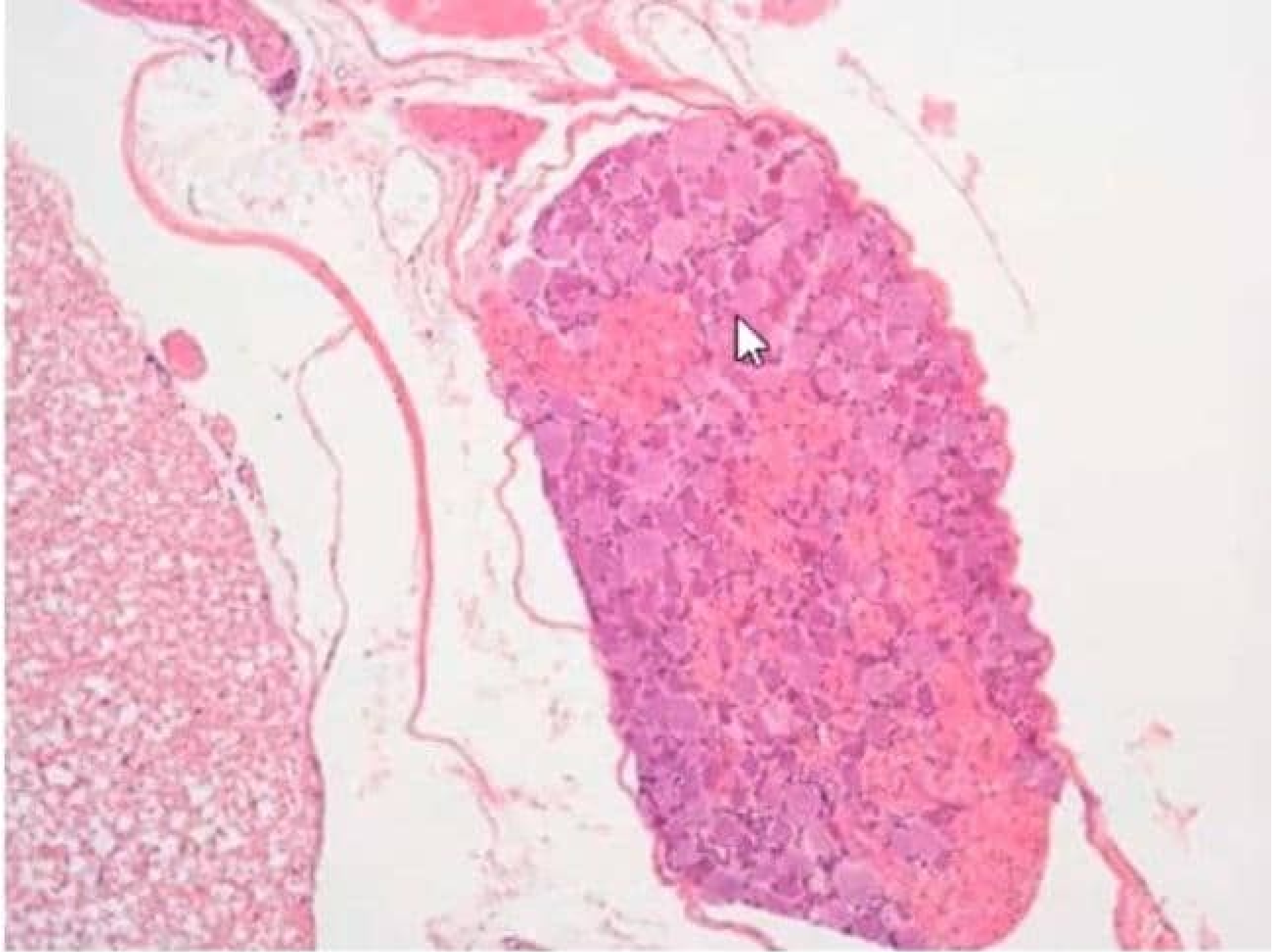
Nissl bodies

white matter







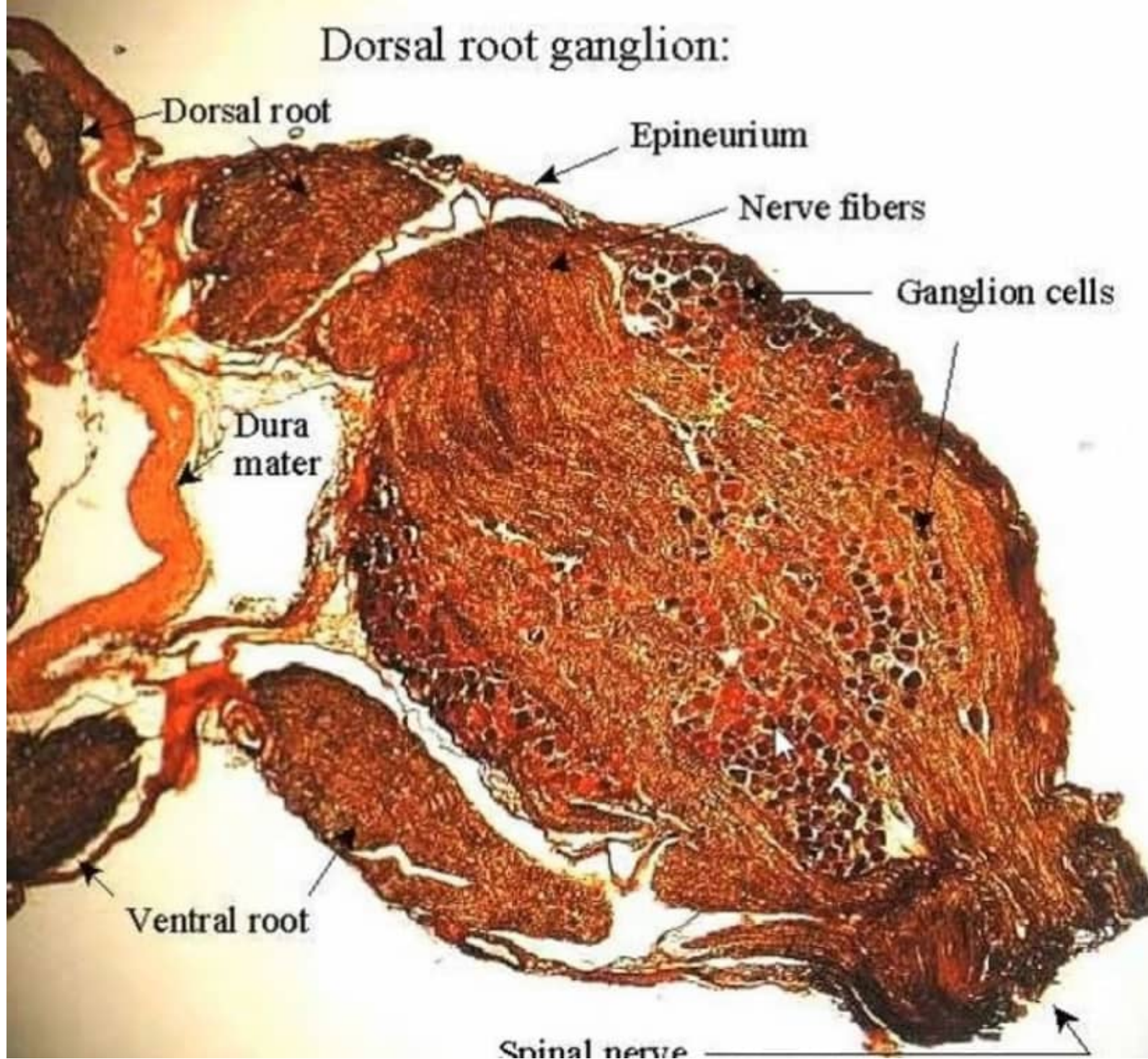




NF

C

Dorsal root ganglion:

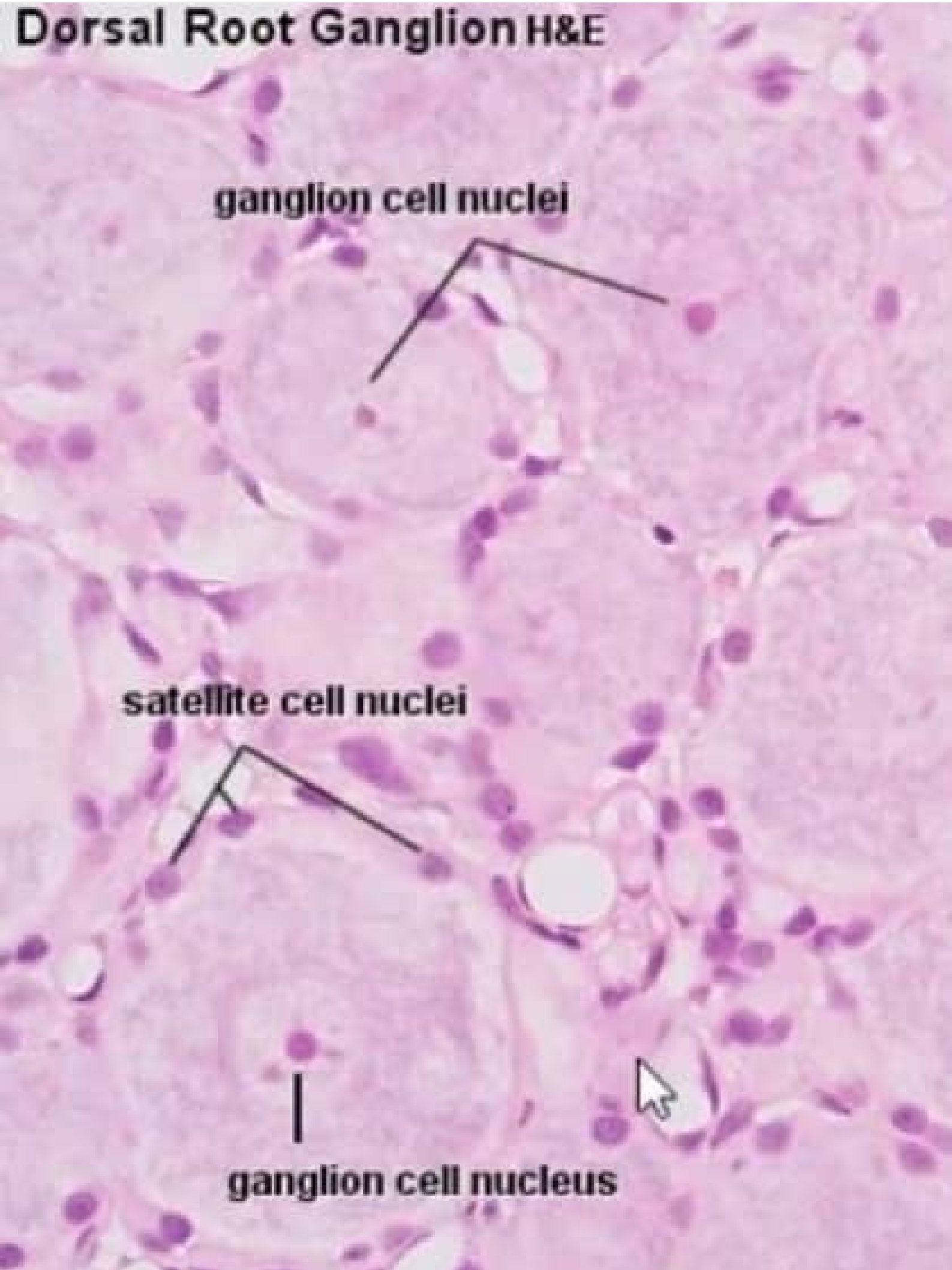


Dorsal Root Ganglion H&E

ganglion cell nuclei

satellite cell nuclei

ganglion cell nucleus



Autonomic Ganglion H&E

satellite cells

ganglion cells