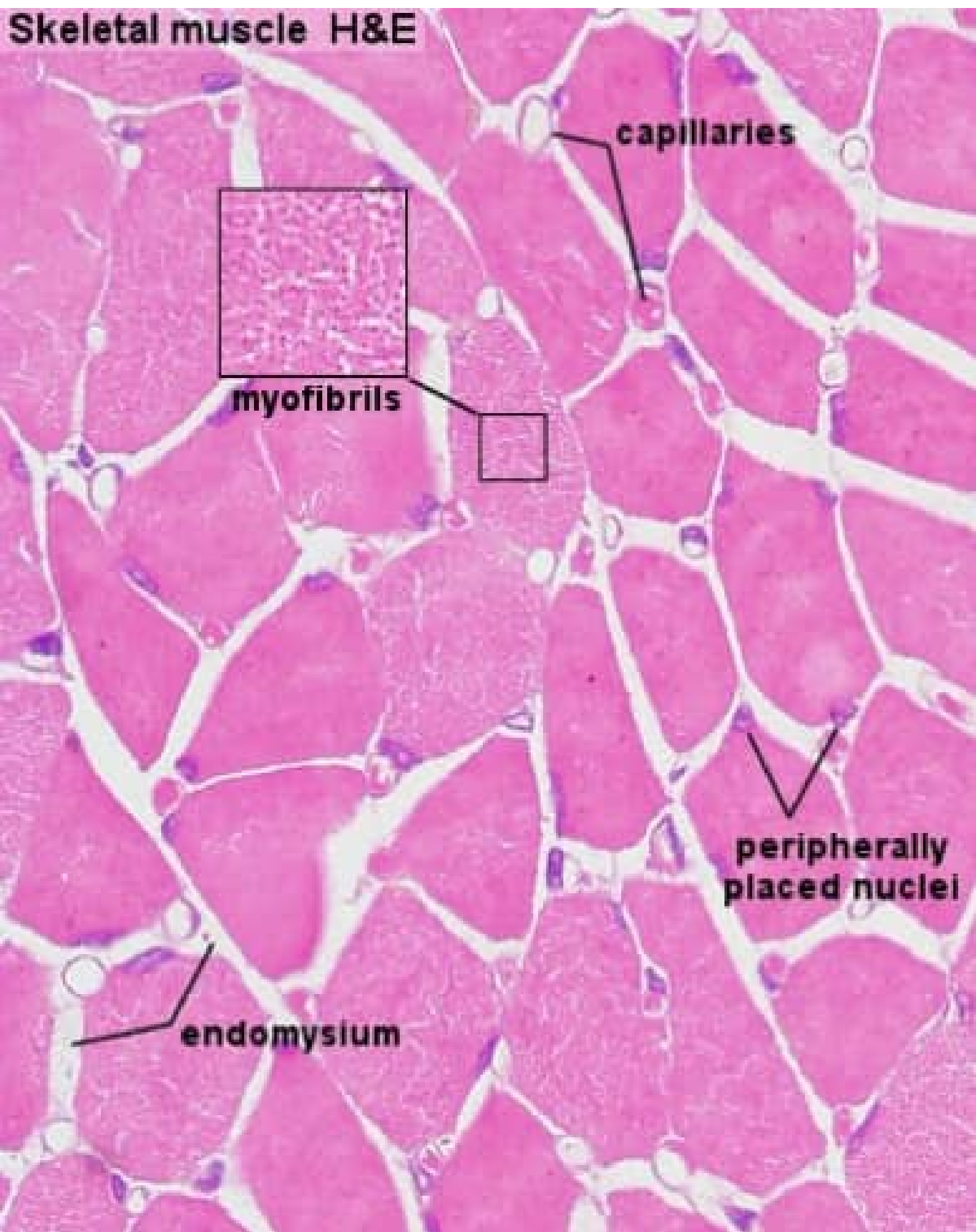
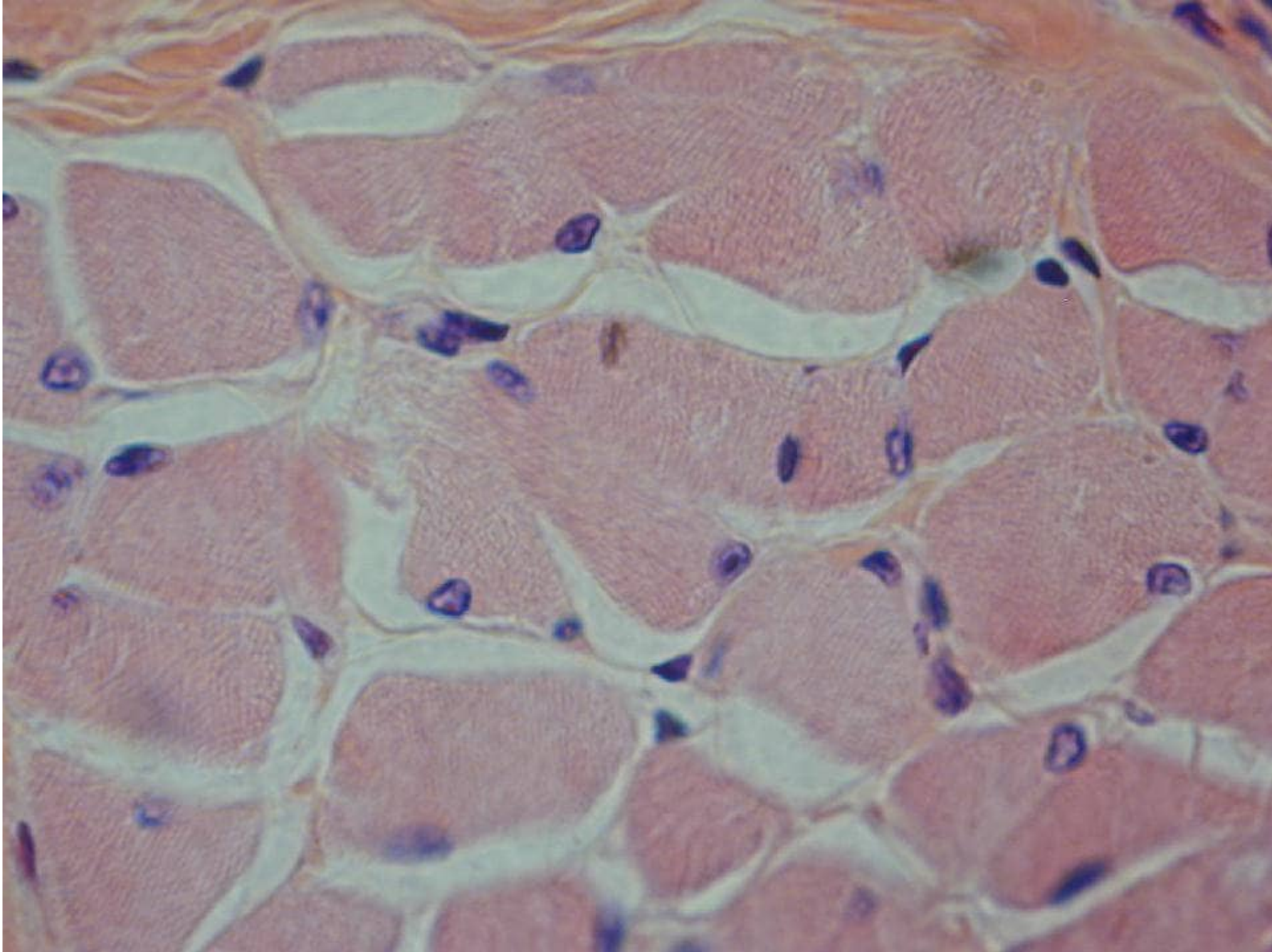
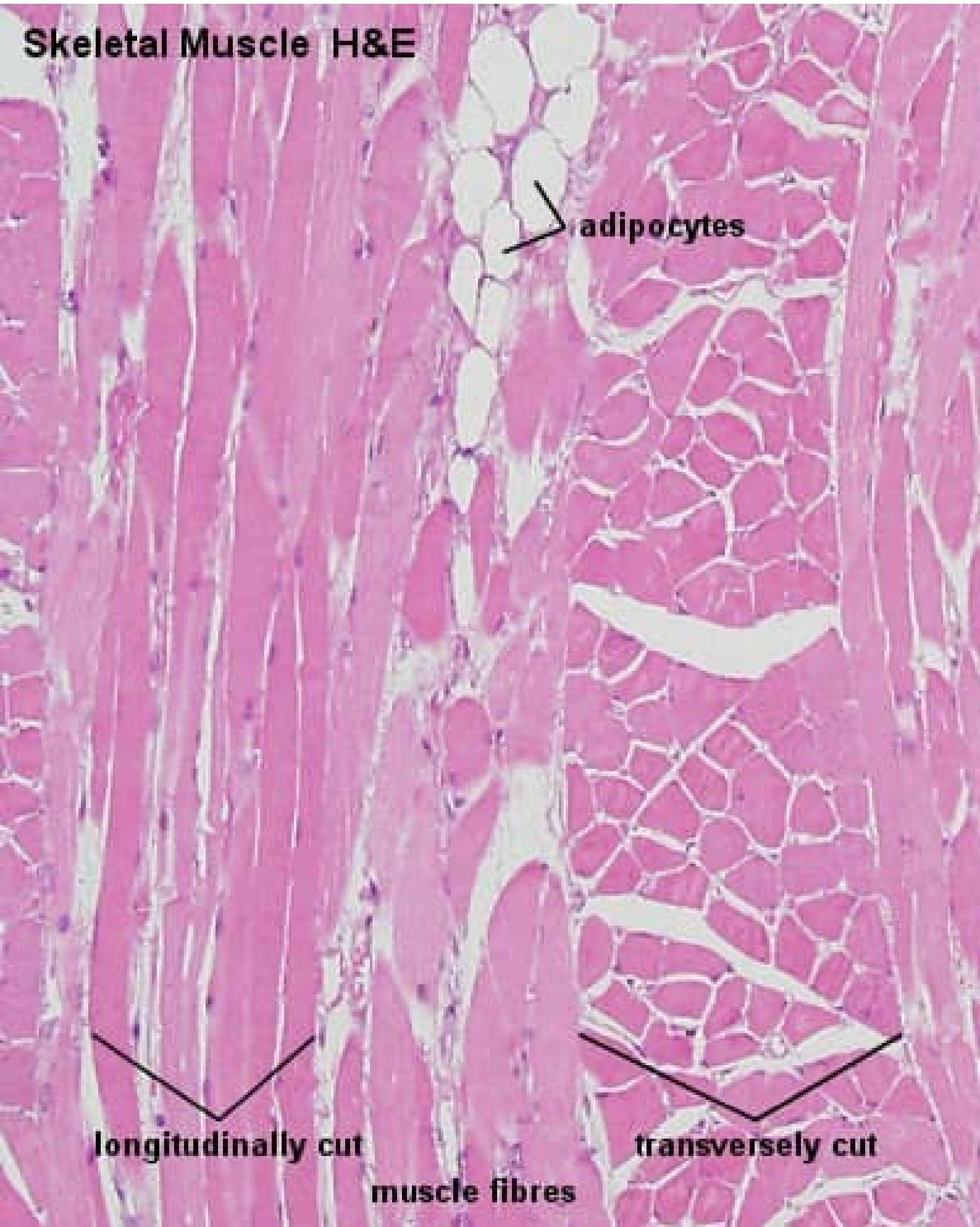


Skeletal muscle H&E





Skeletal Muscle H&E



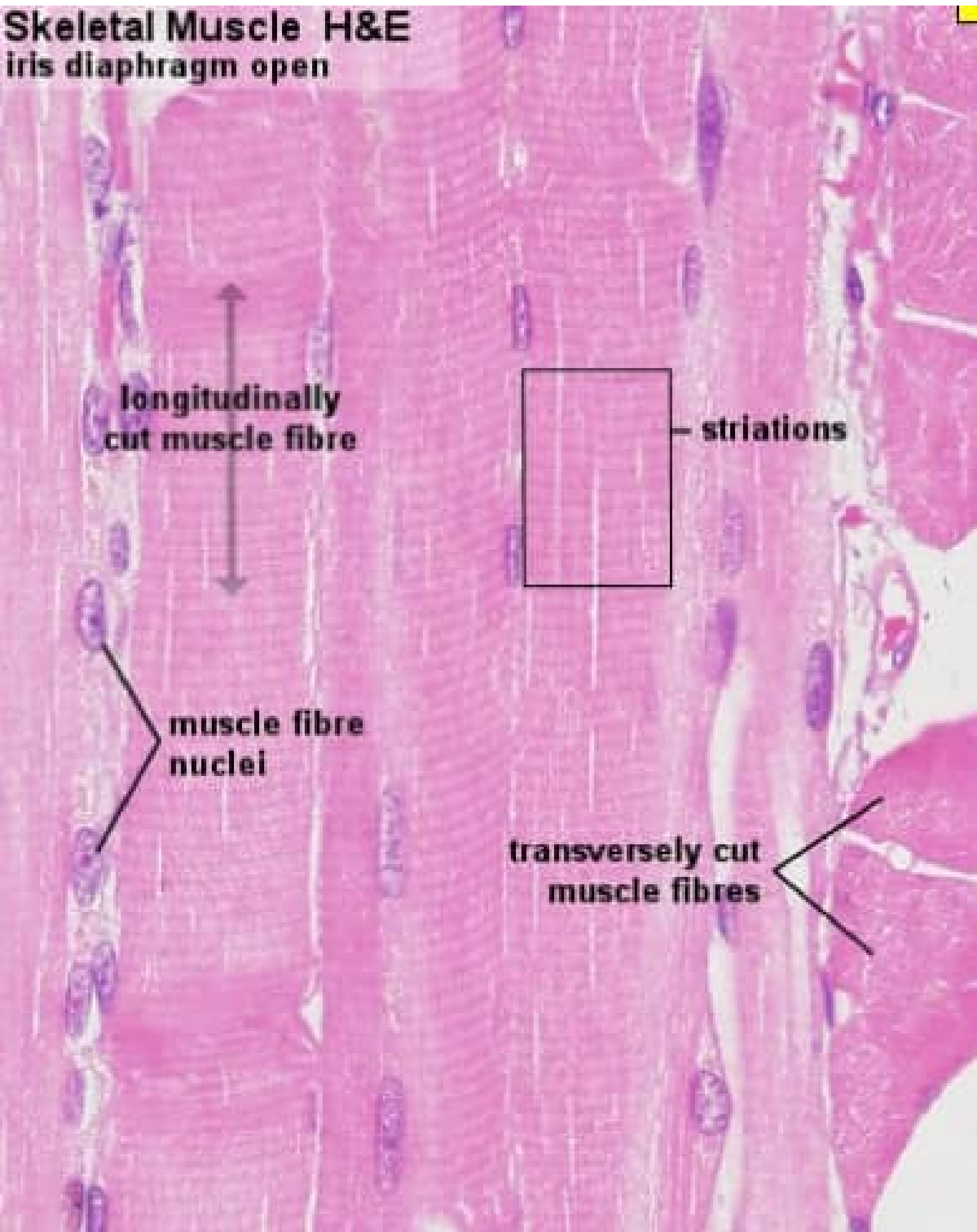
adipocytes

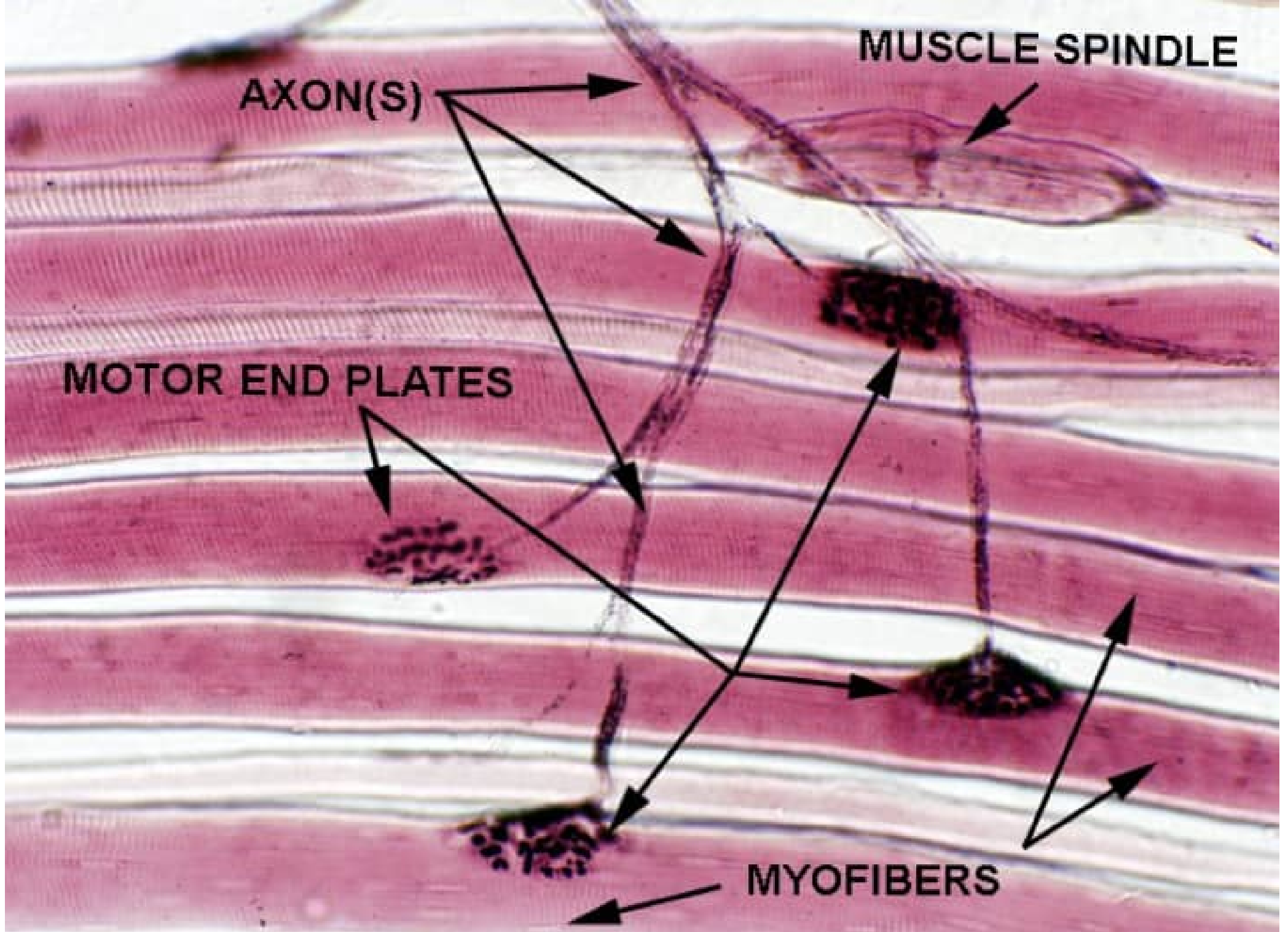
longitudinally cut

muscle fibres

transversely cut

Skeletal Muscle H&E
iris diaphragm open







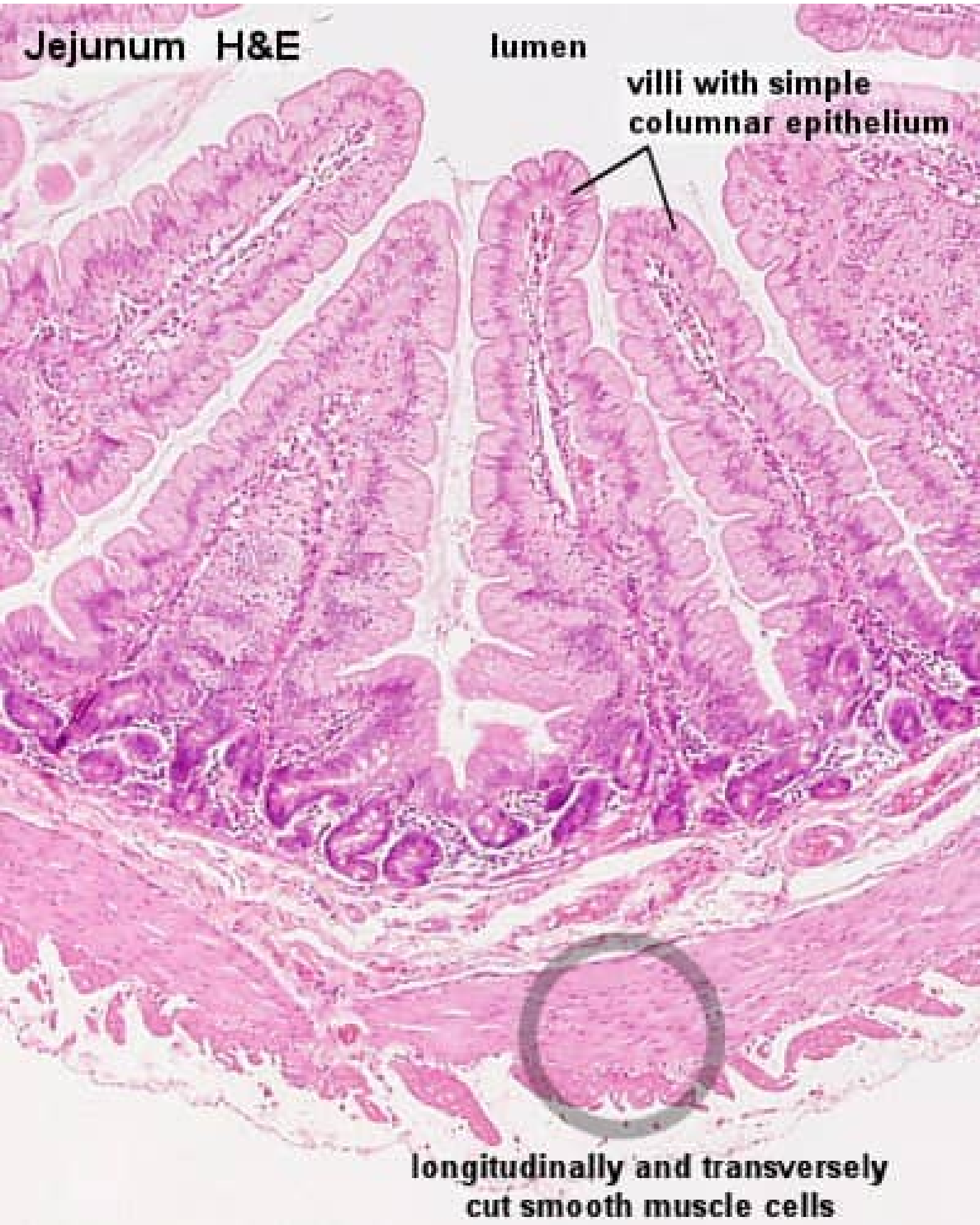
PURKINJE FIBERS

MODERATOR BAND

Jejunum H&E

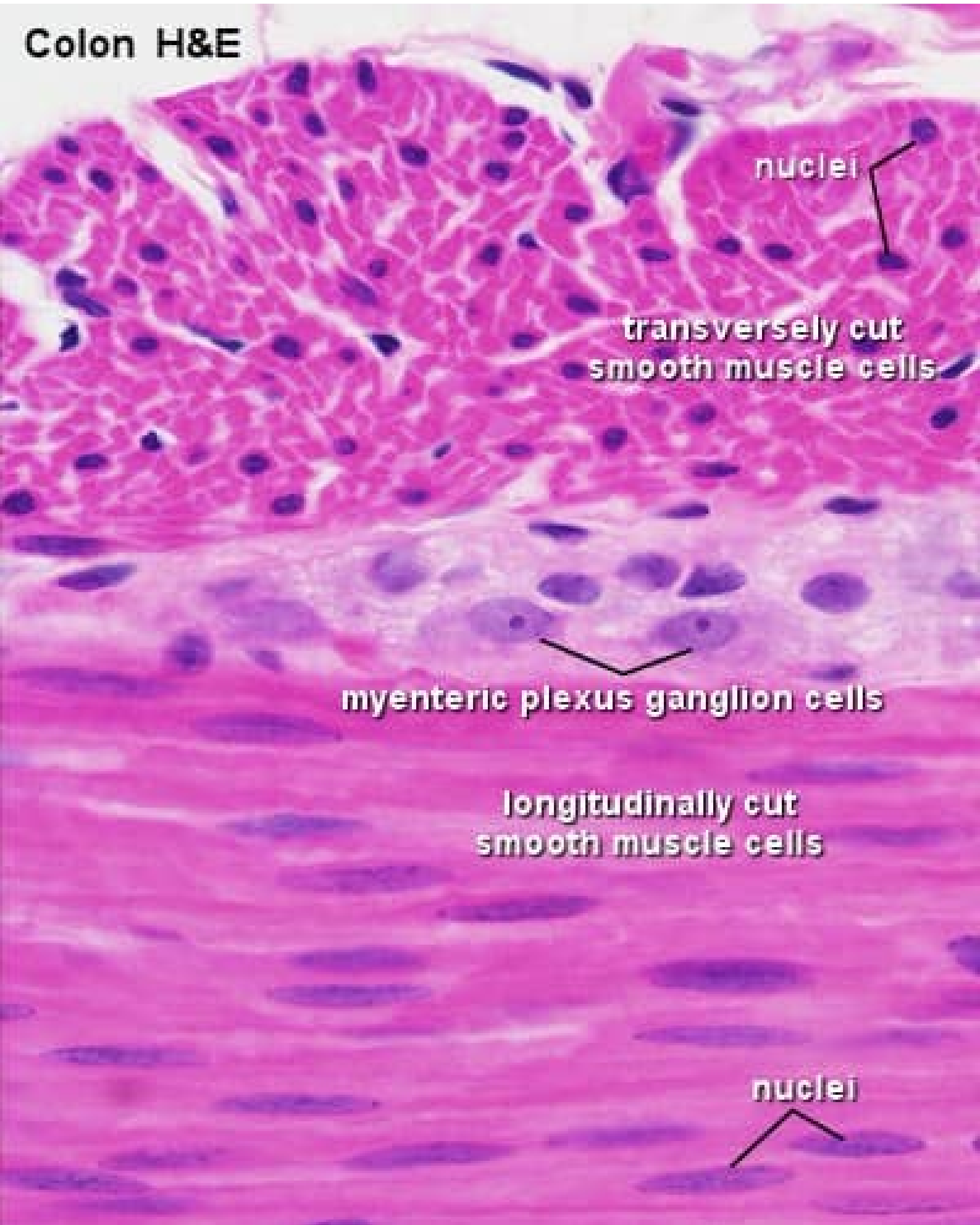
lumen

villi with simple columnar epithelium



longitudinally and transversely cut smooth muscle cells

Colon H&E



nuclei

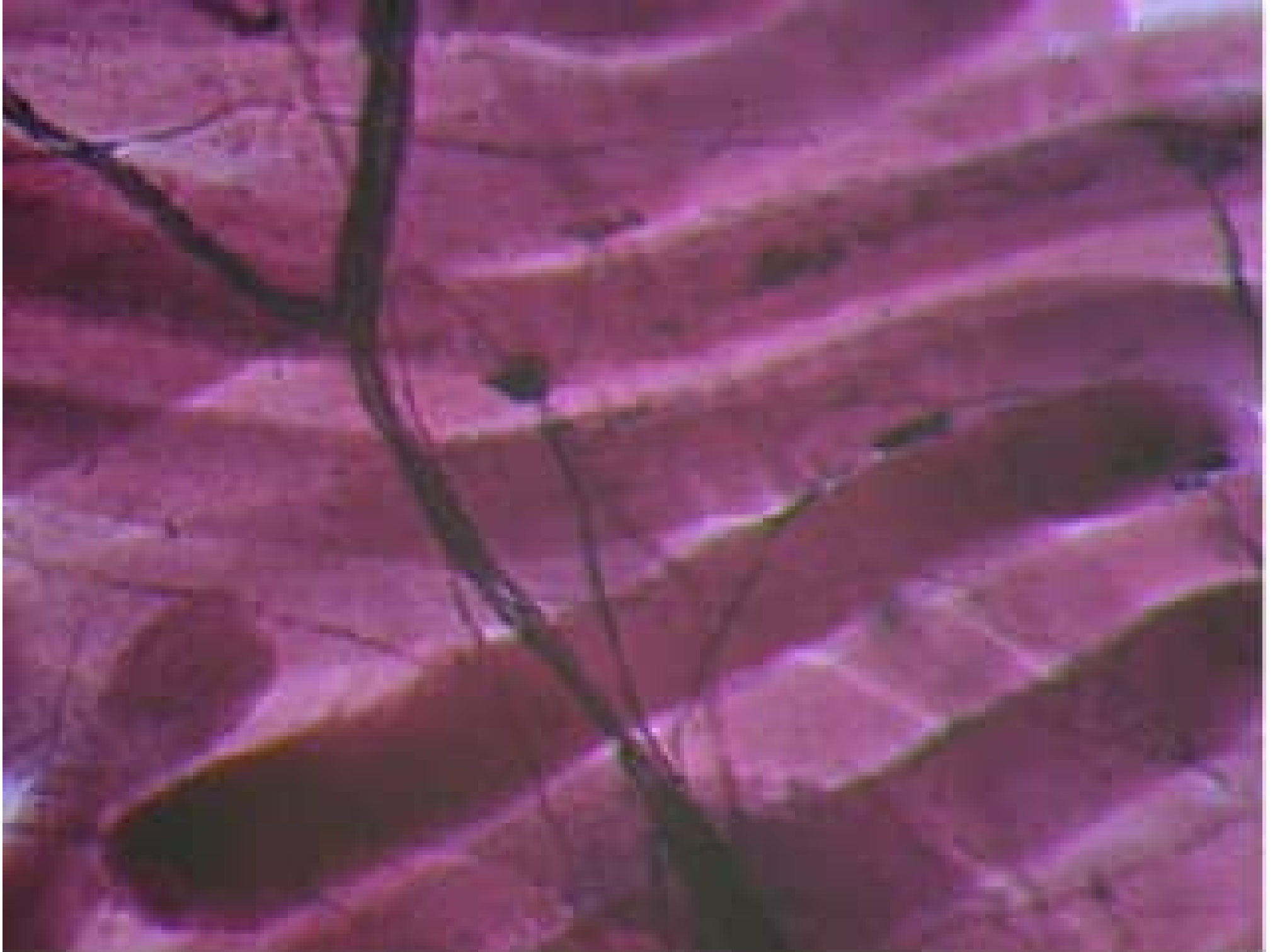
transversely cut
smooth muscle cells

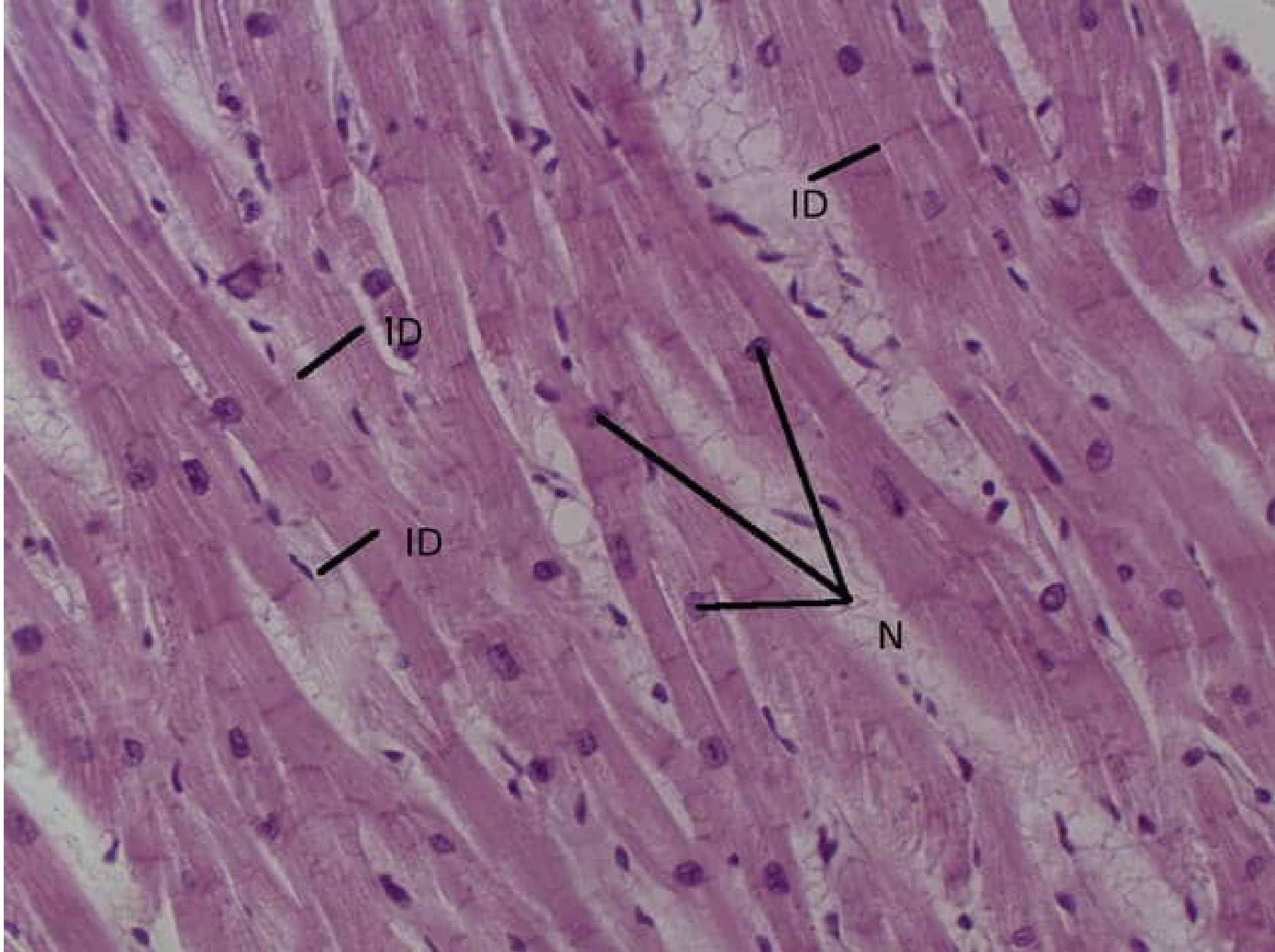
myenteric plexus ganglion cells

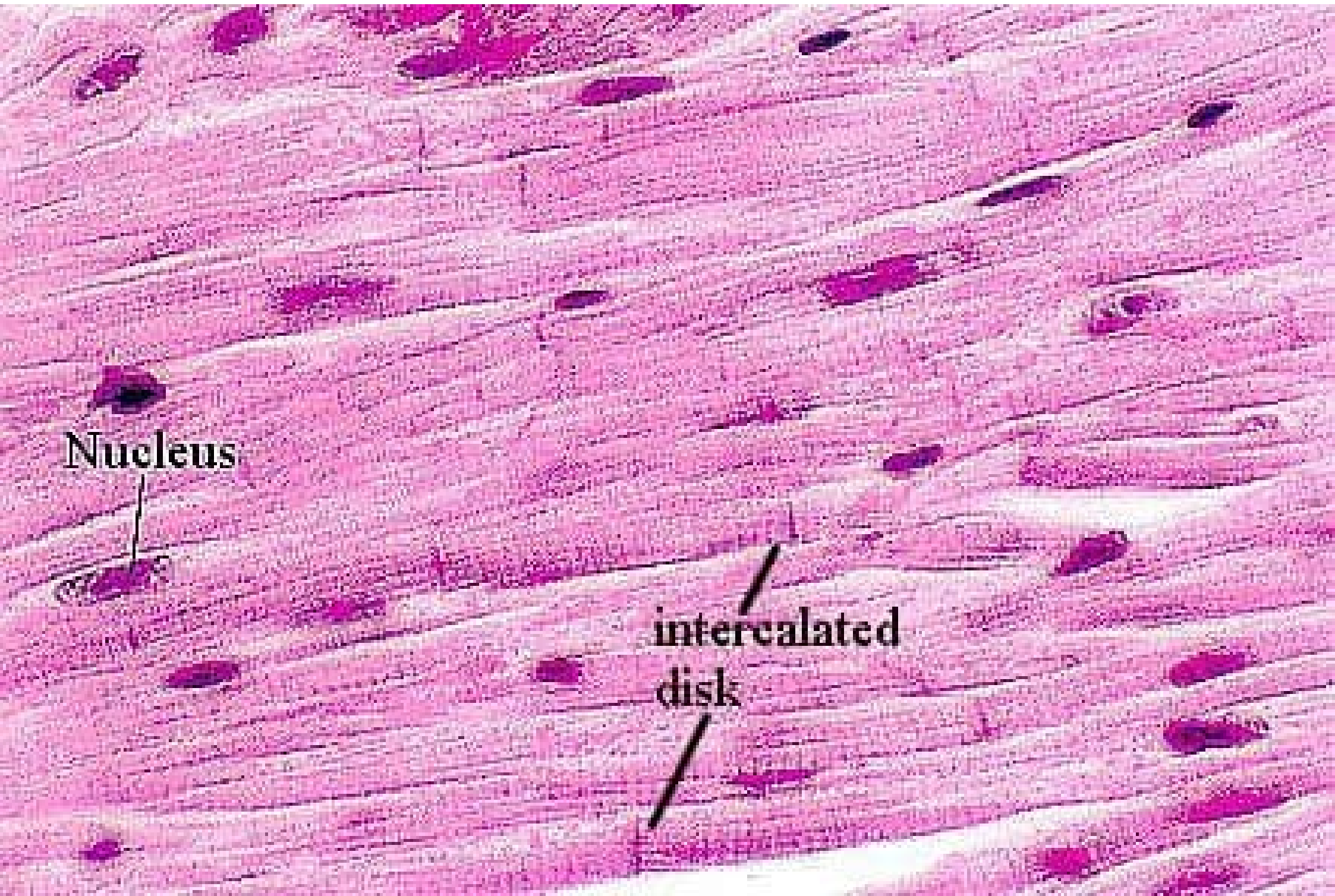
longitudinally cut
smooth muscle cells

nuclei



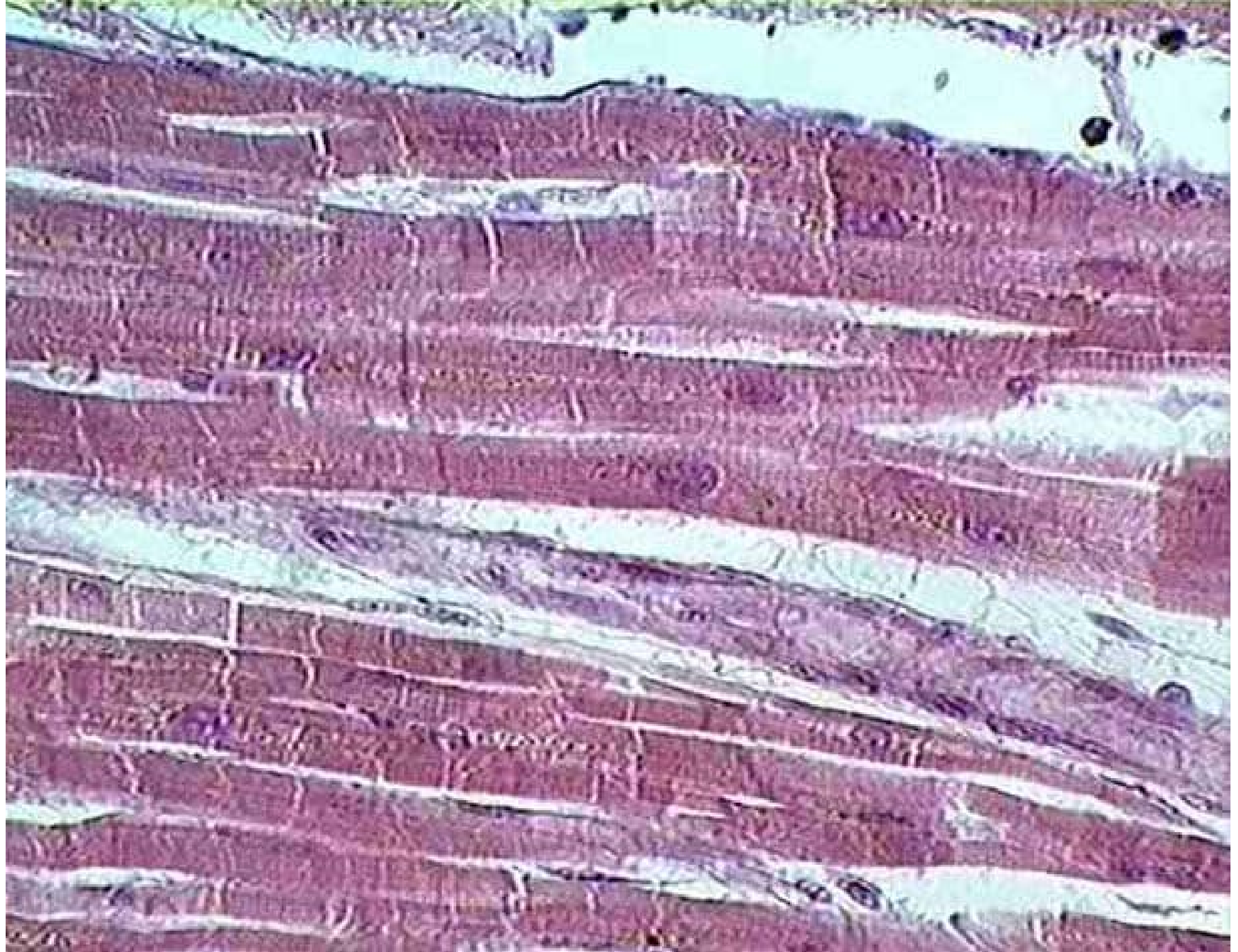


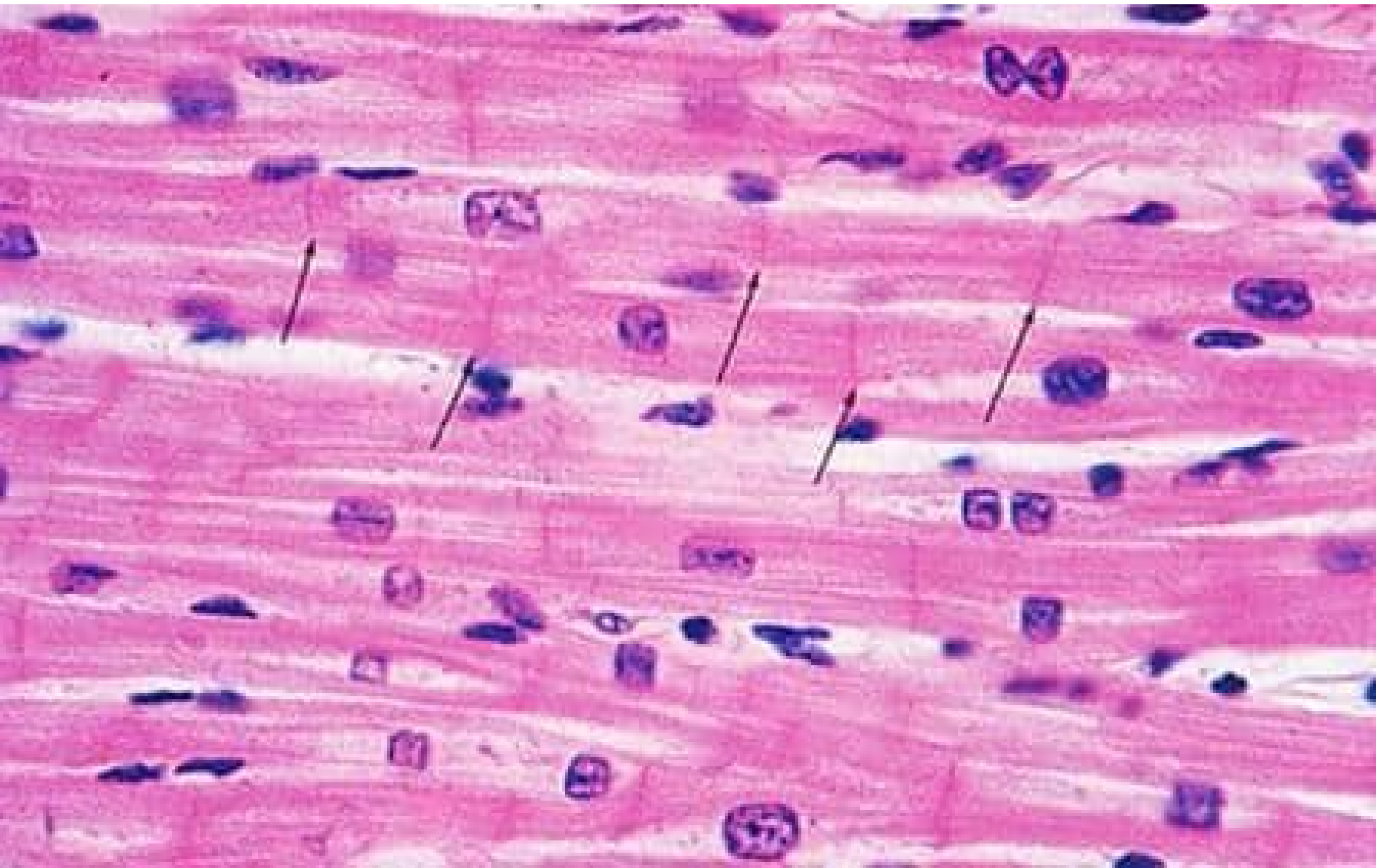


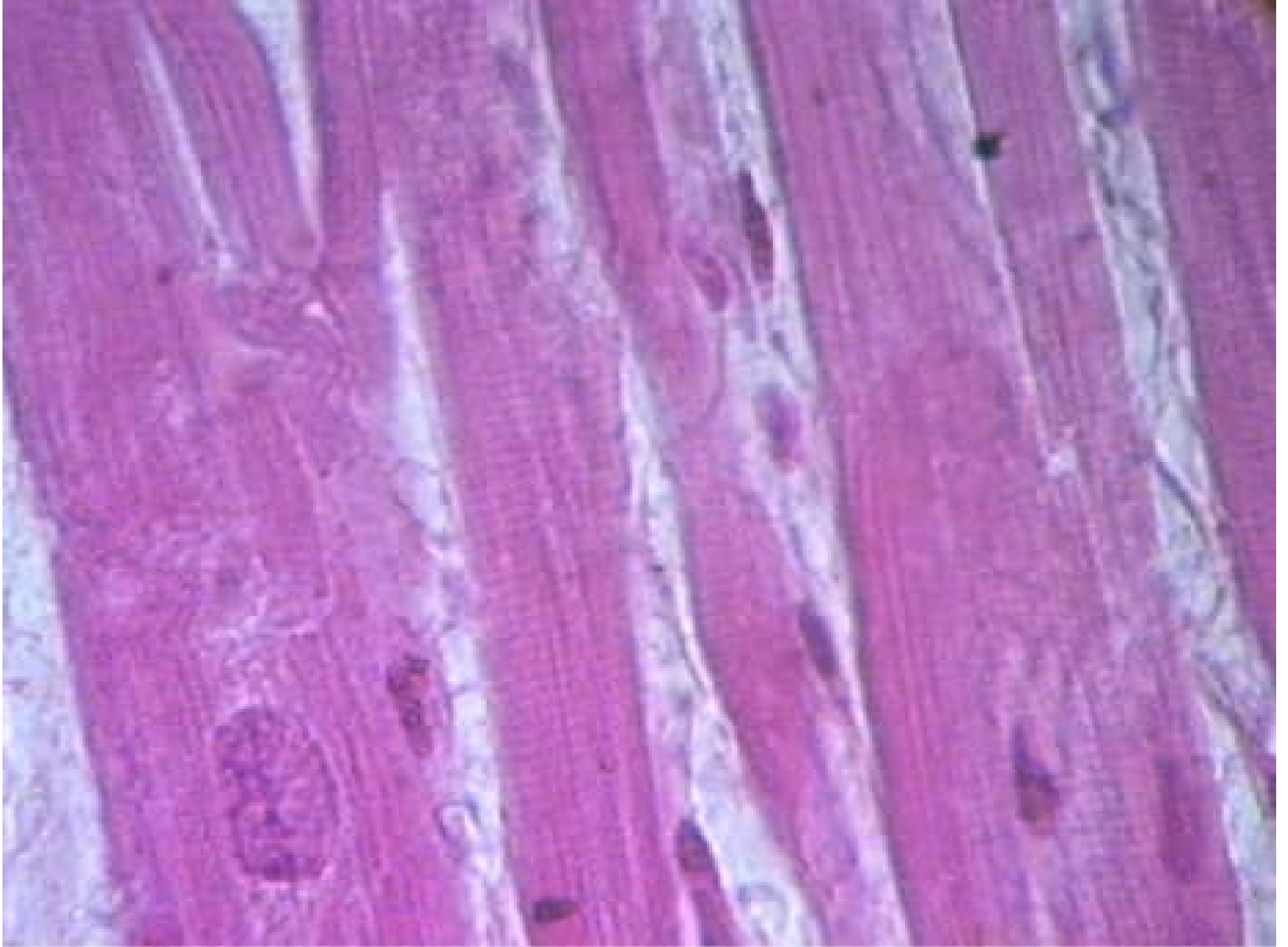


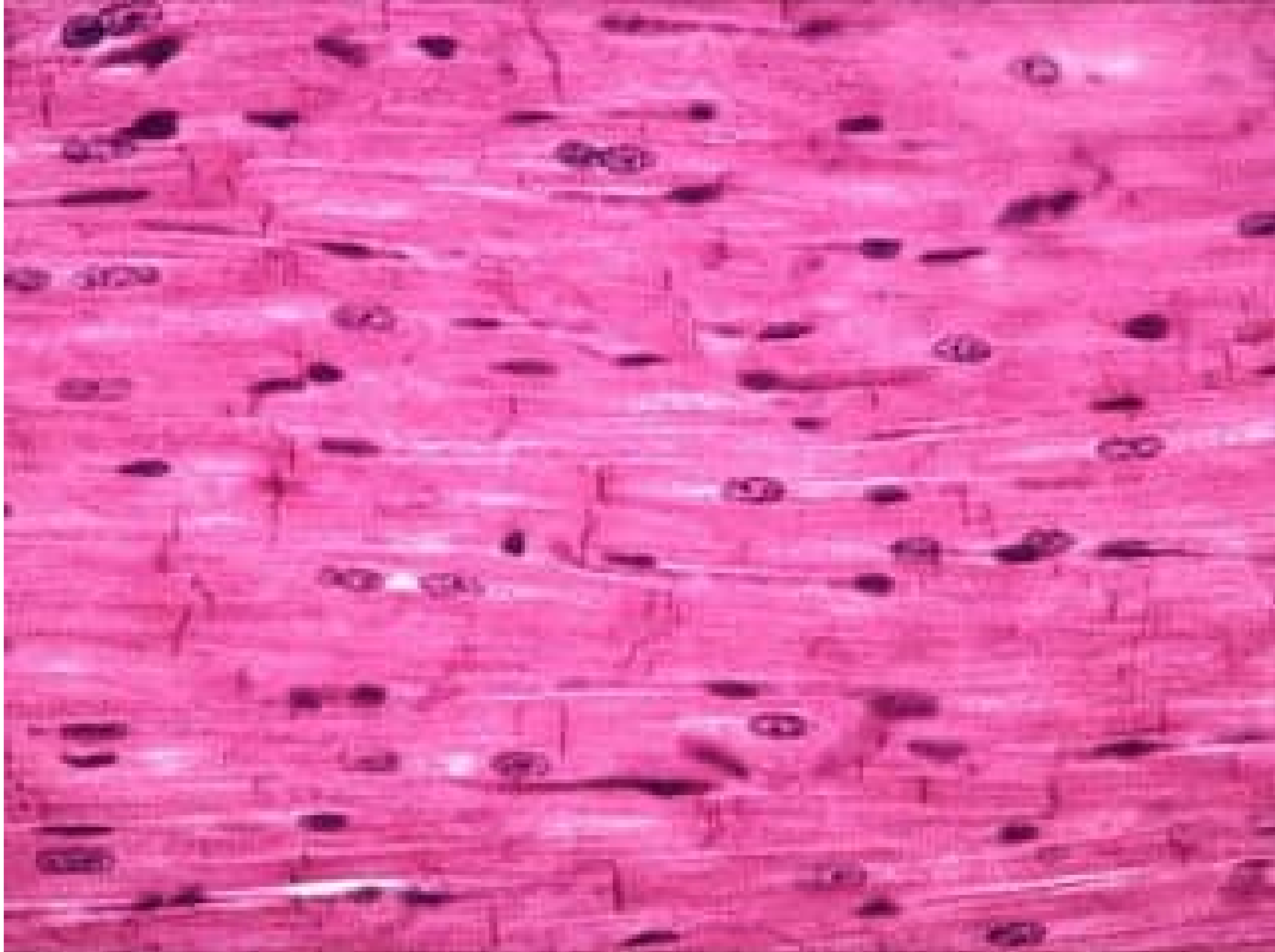
Nucleus

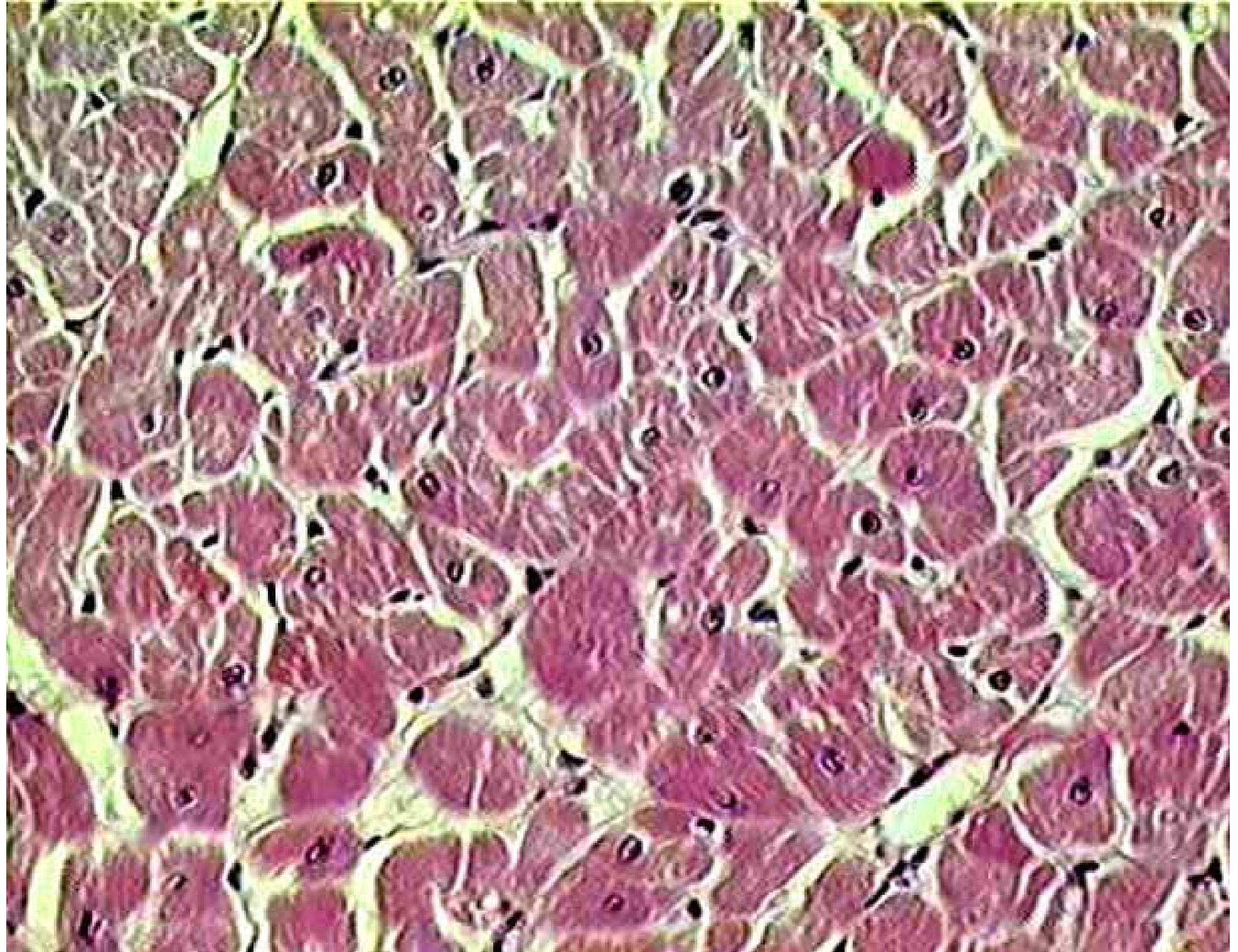
**intercalated
disk**



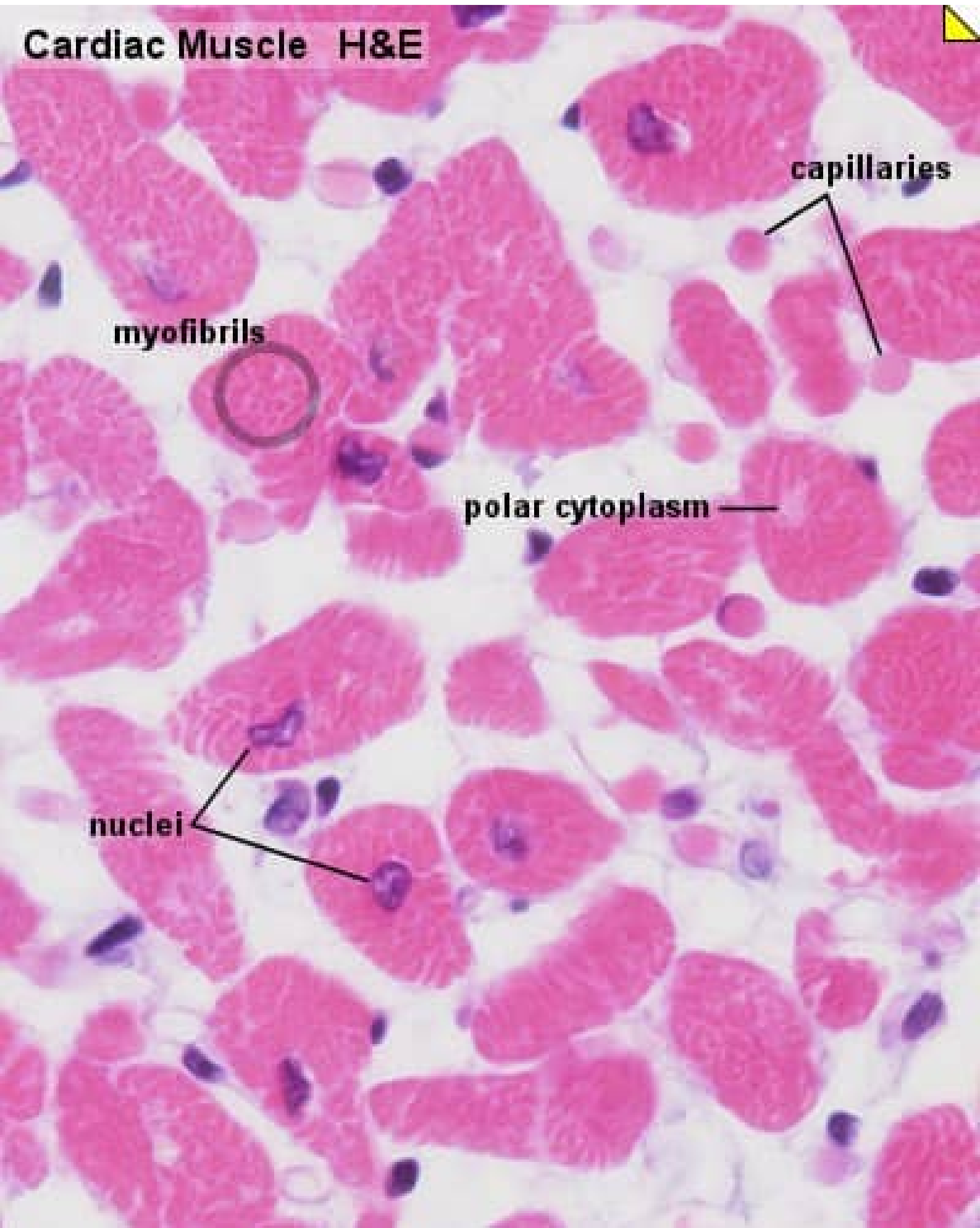








Cardiac Muscle H&E



myofibrils

capillaries

polar cytoplasm

nuclei

