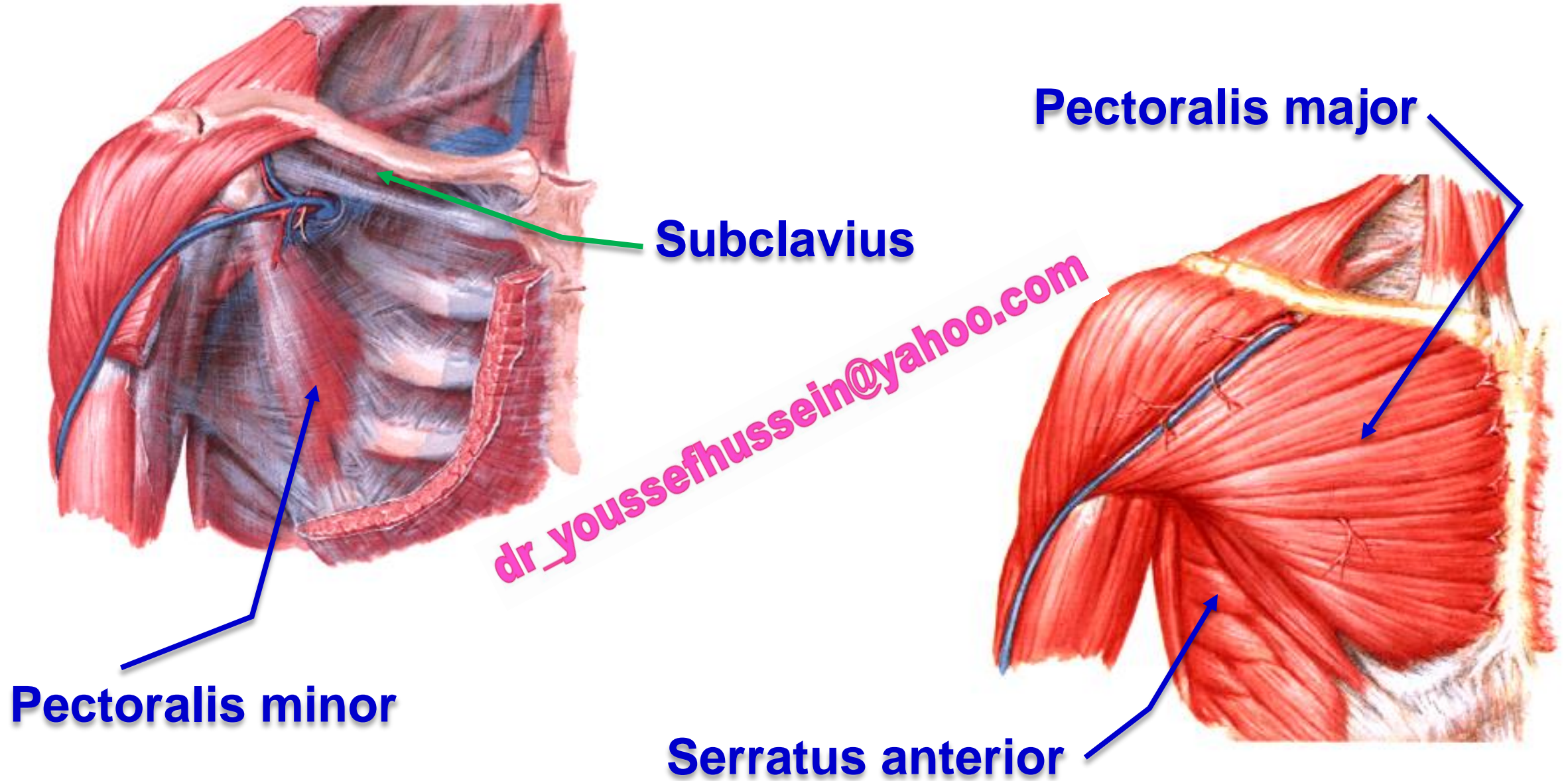
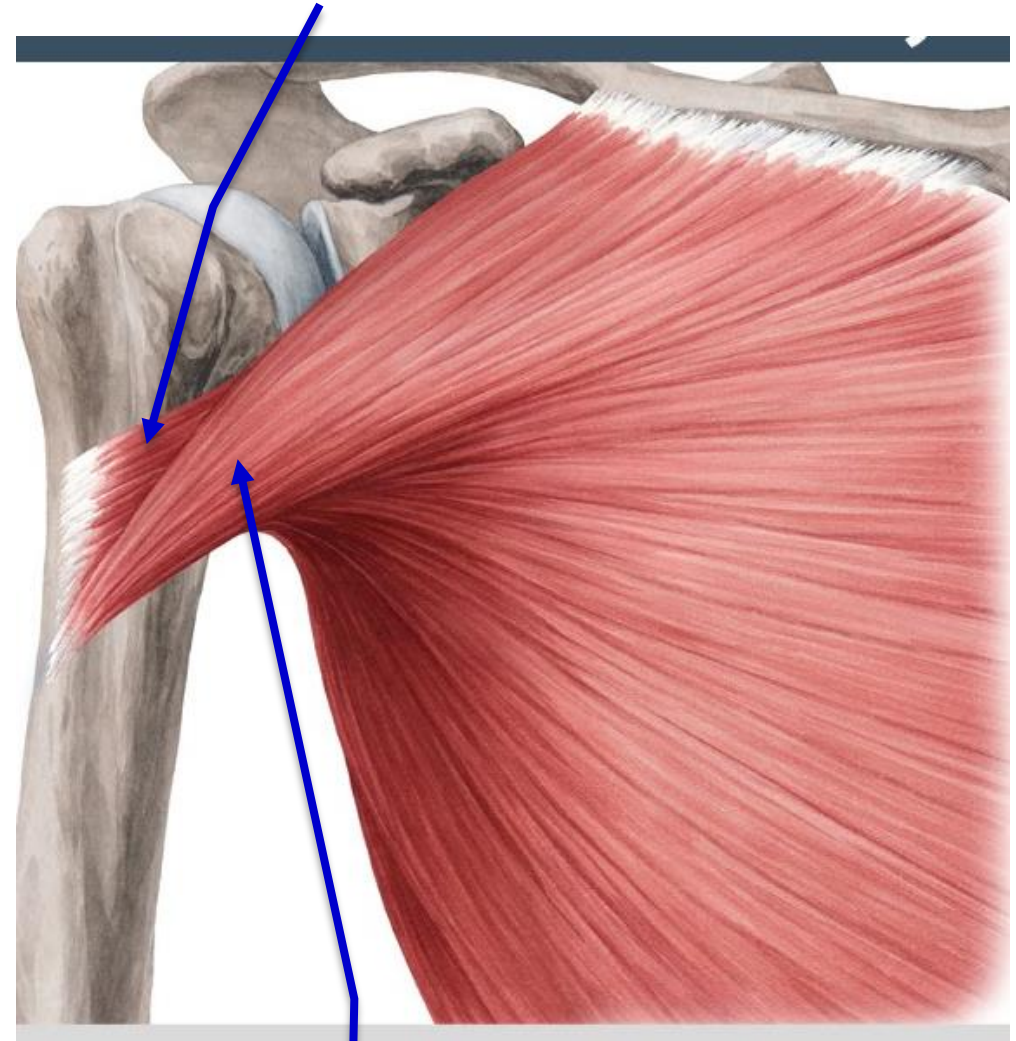


Muscles of the Pectoral region



Pectoralis major muscle

Posterior lamina



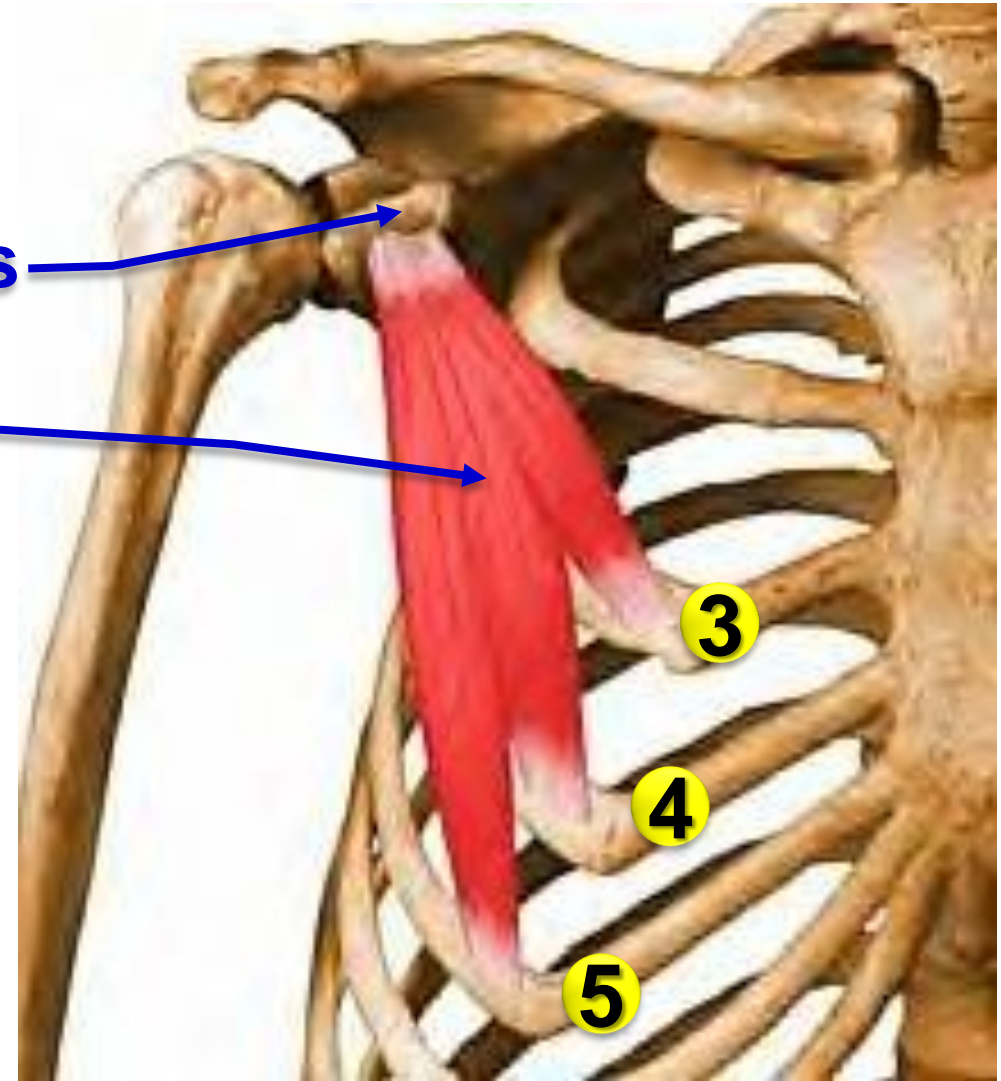
Anterior lamina

dr_youssefhussein@yahoo.com

Pectoralis minor

Coracoid process

Pectoralis minor
muscle



Clavipectoral fascia

Clavicle

Thoracoacromial artery

Cephalic vein

Pectoralis minor muscle

Subclavius muscle

Clavipectoral fascia

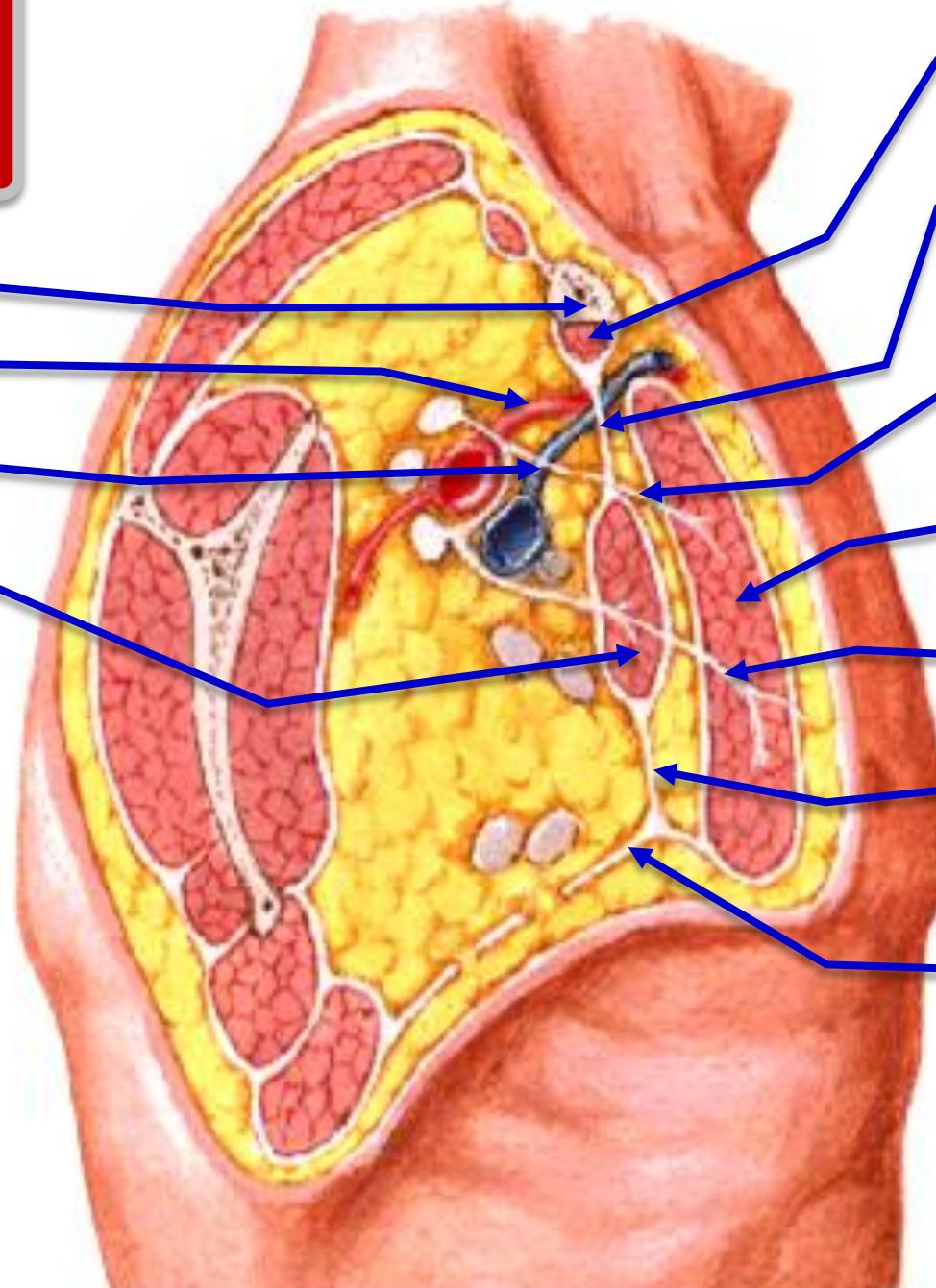
Lateral pectoral nerve

Pectoralis major

Medial pectoral nerve

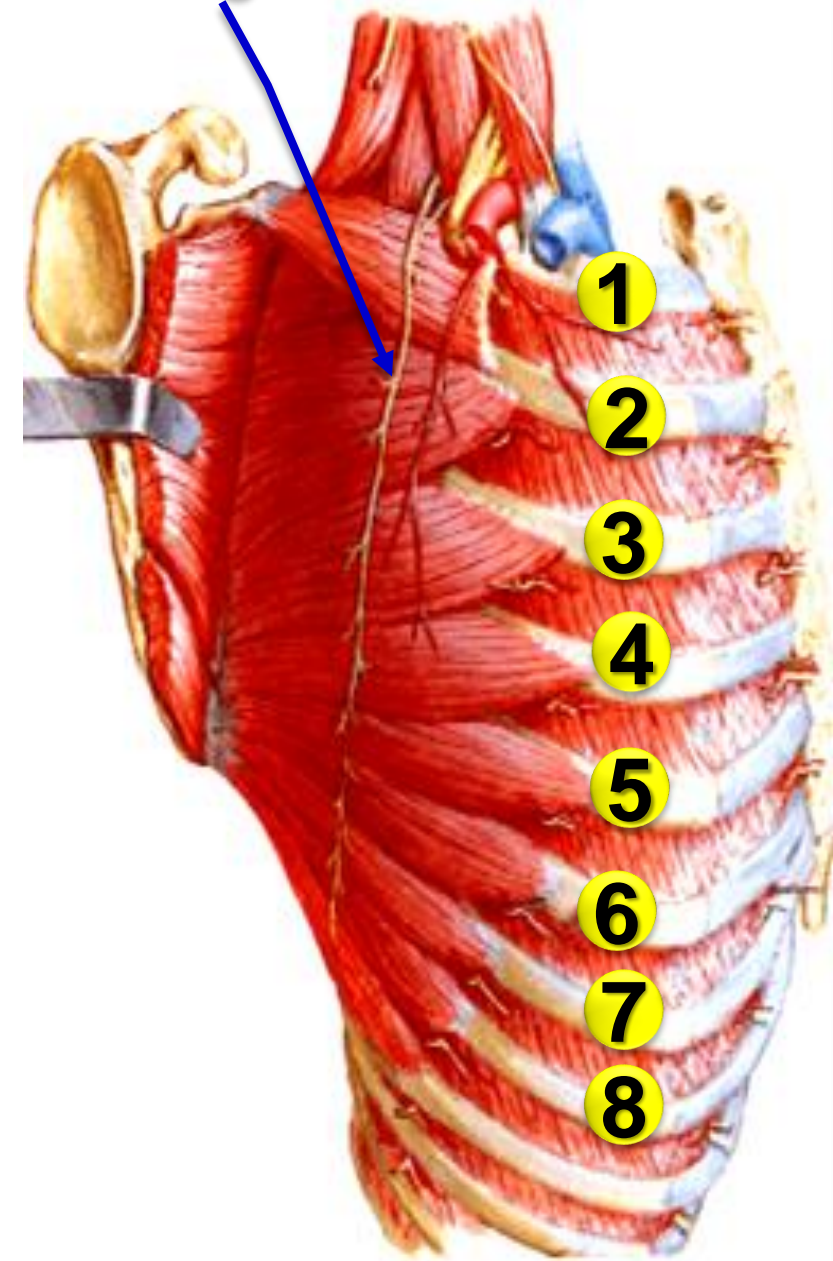
Suspensory ligament of axilla

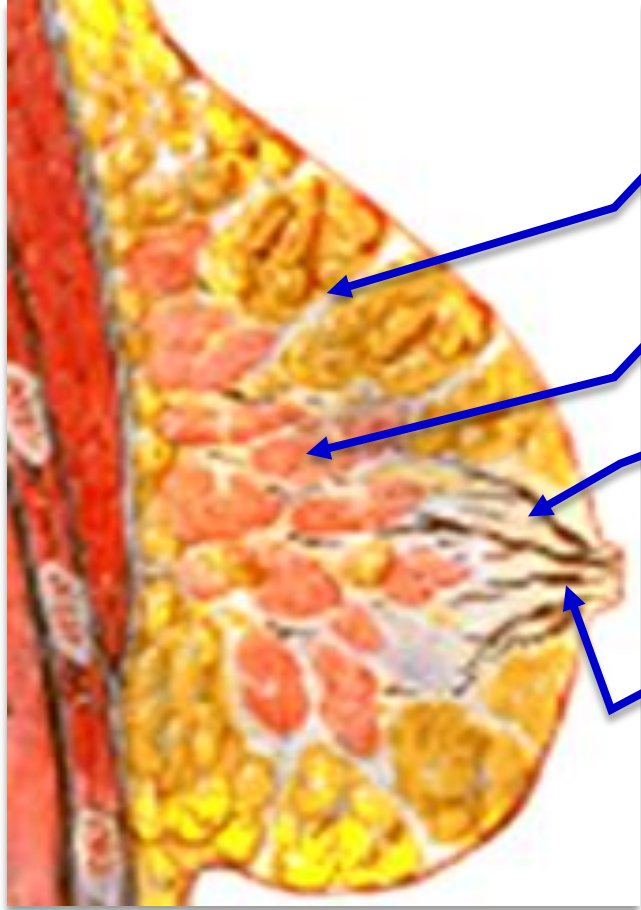
Axillary fascia



dr_youssefhussein@yahoo.com

Long thoracic nerve



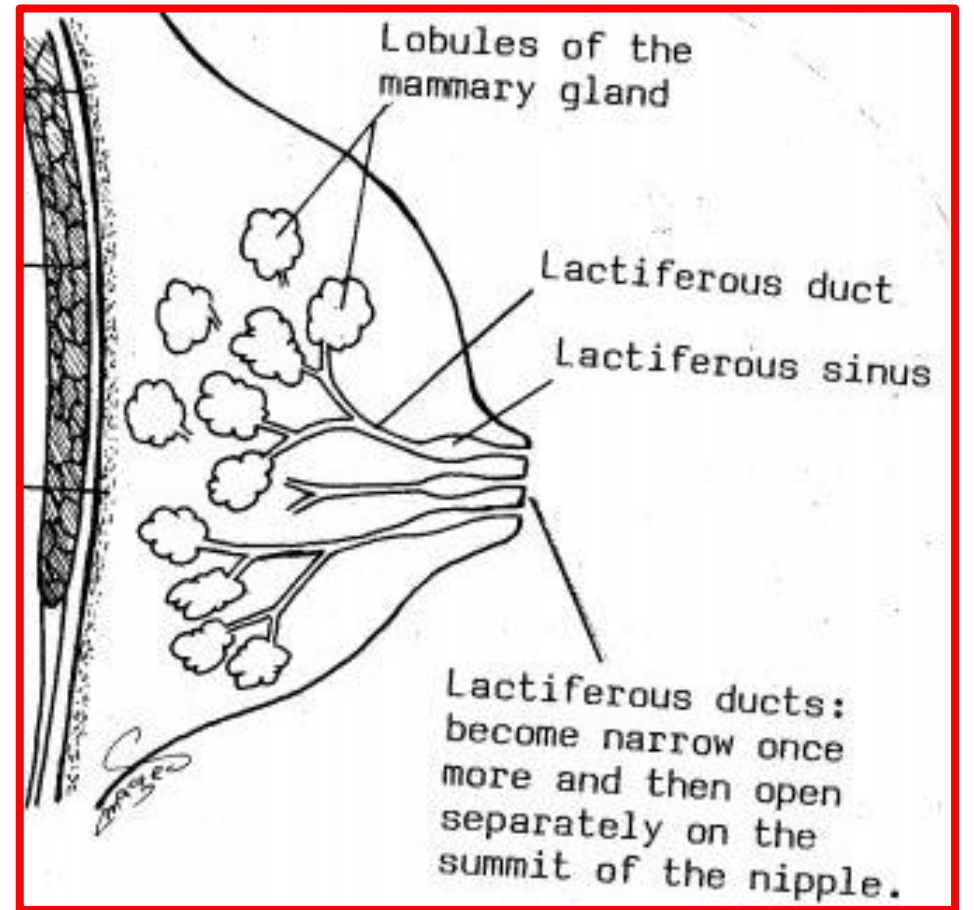


Septum

Lobule

Lactiferous duct

Lactiferous sinus

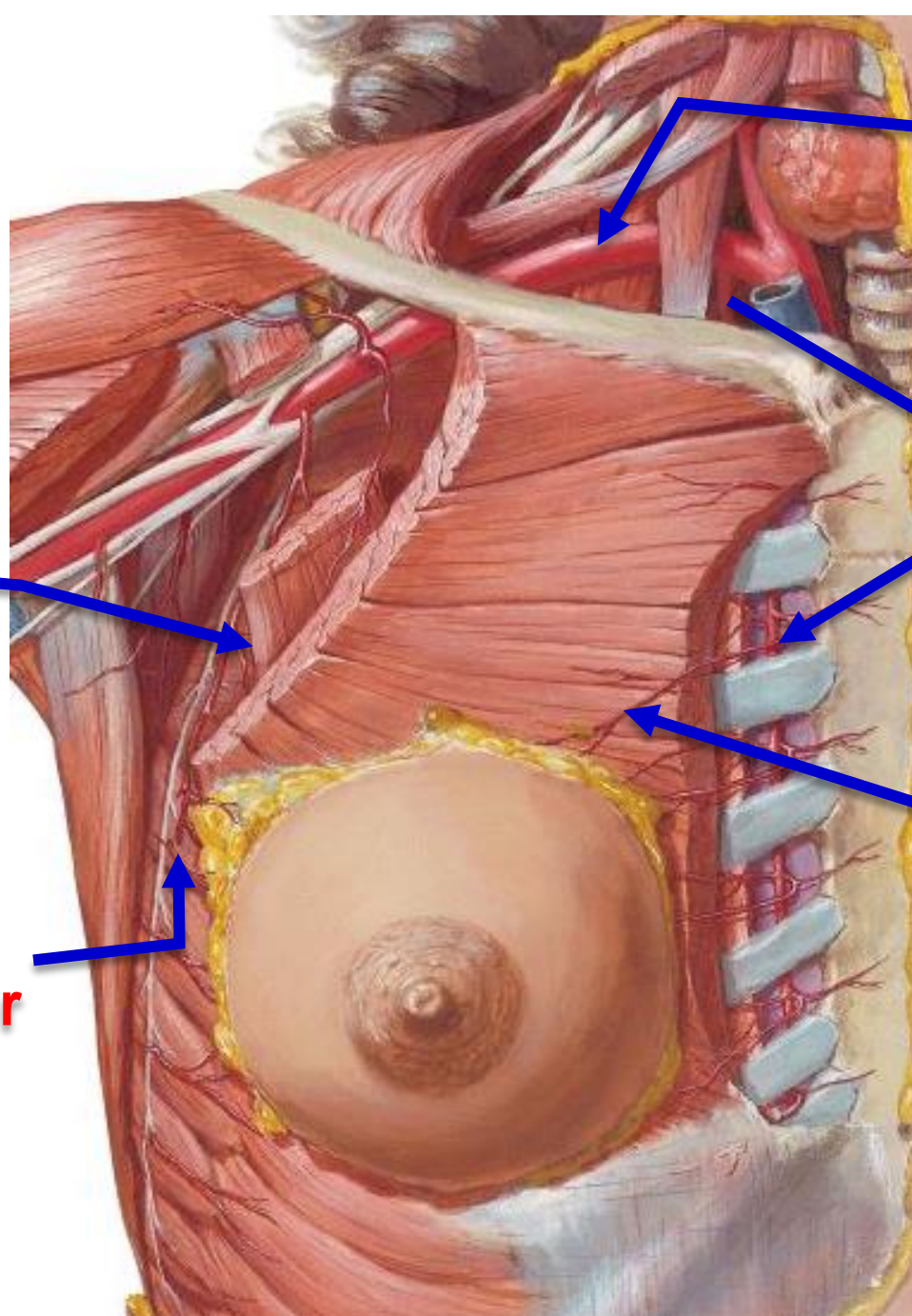


Lobules of the mammary gland

Lactiferous duct

Lactiferous sinus

Lactiferous ducts:
become narrow once
more and then open
separately on the
summit of the nipple.



Subclavian artery

Internal thoracic artery and its perforating branches

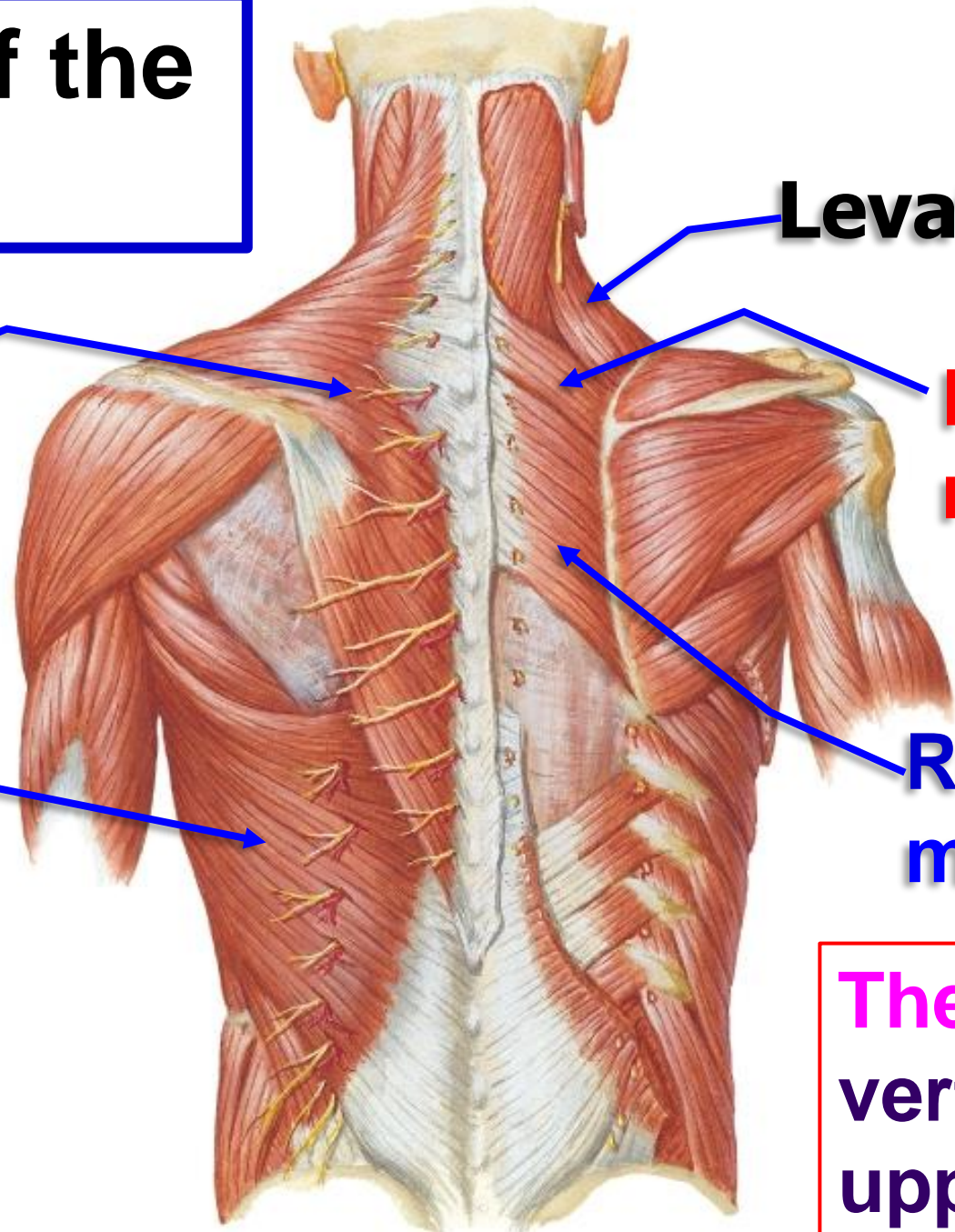
Lateral mammary branches of Lateral thoracic artery

Lateral mammary branches of posterior and anterior intercostal arteries

Medial mammary branches of internal thoracic artery

dr_youssefhussein@yahoo.com

Muscles of the back



Levator scapula

Trapezius

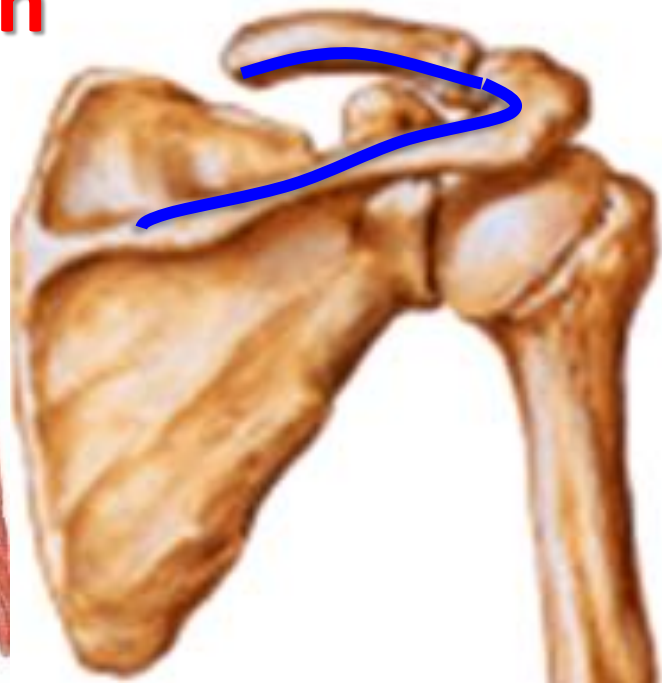
Rhomboideus minor

Latissimus dorsi

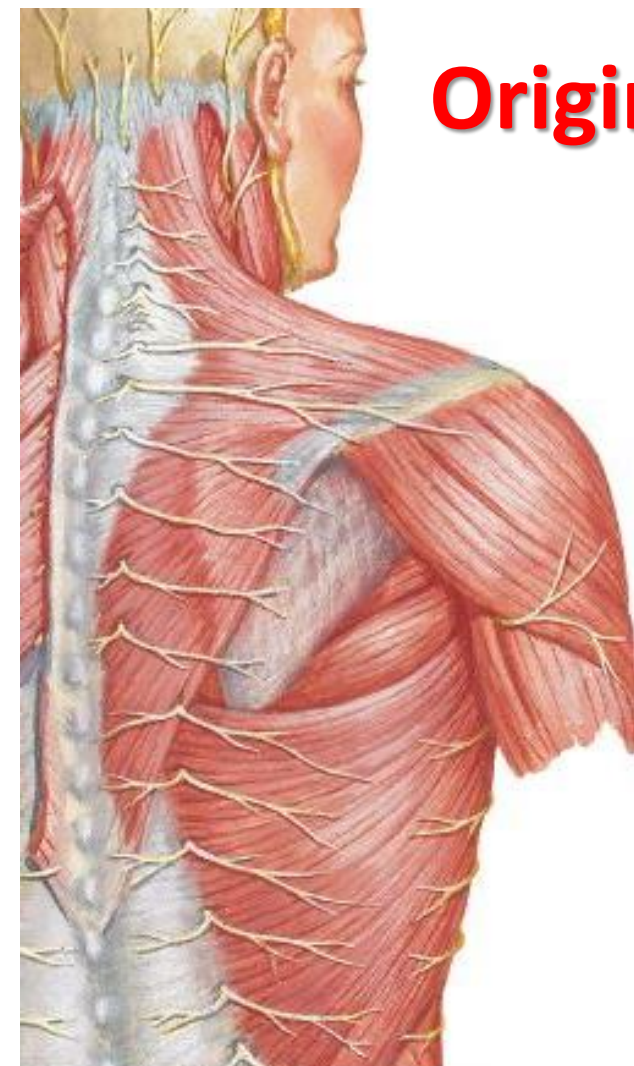
Rhomboideus major

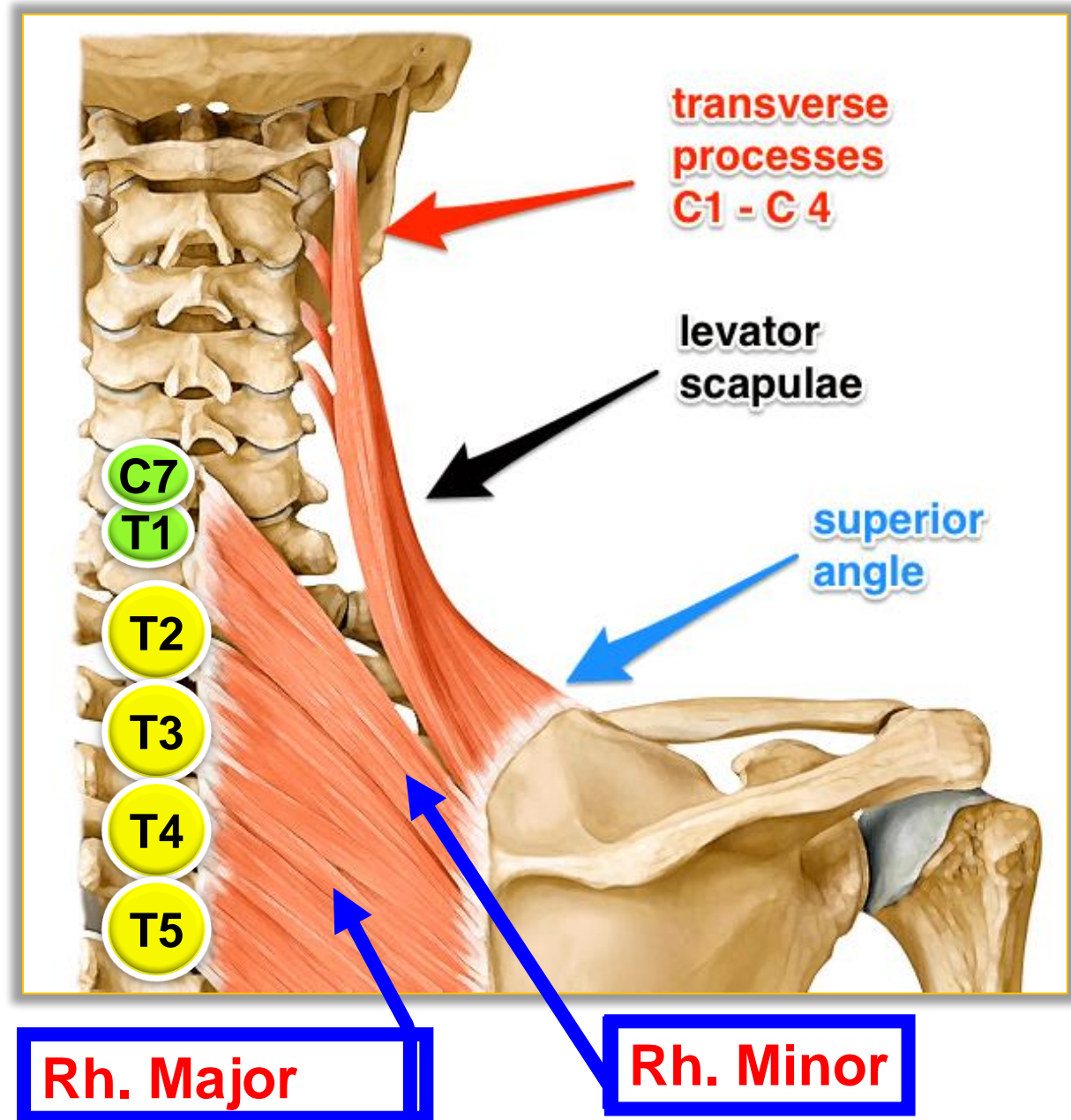
The muscles connect vertebral column with upper limb

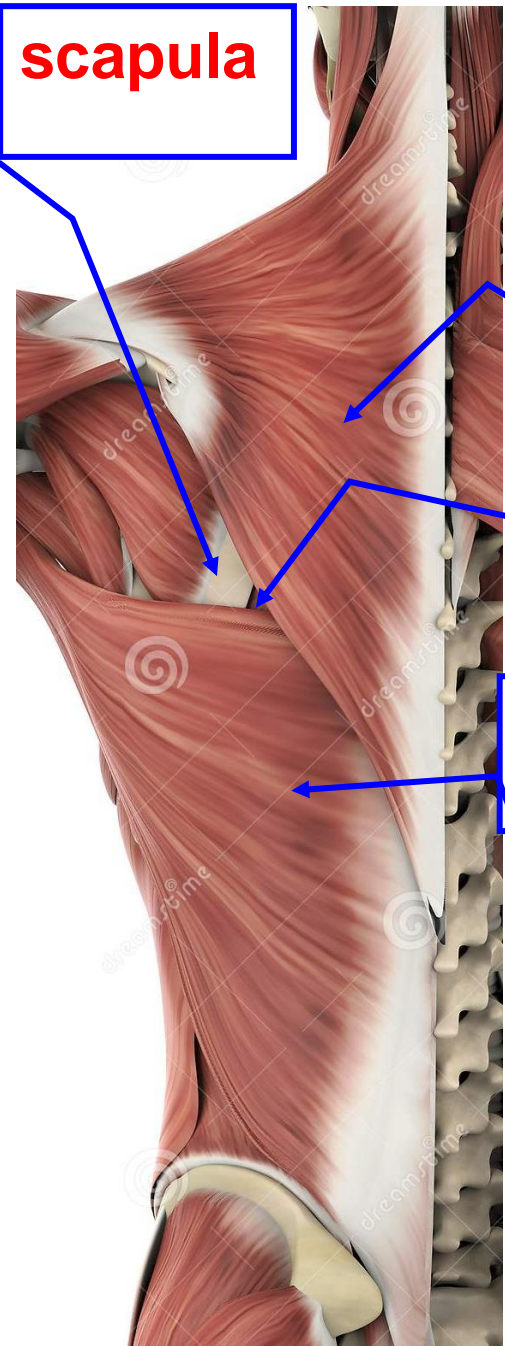
Origin



Insertion





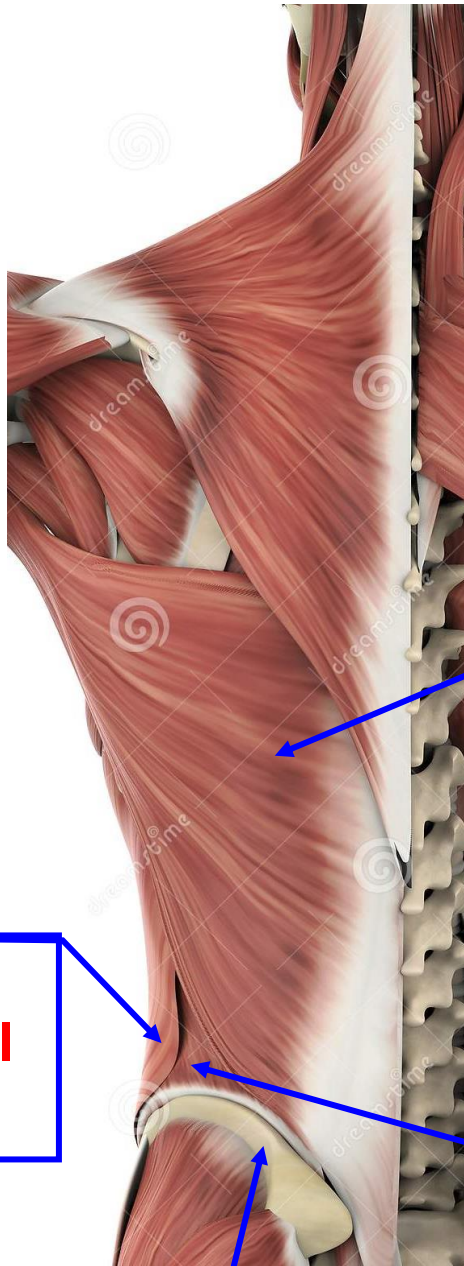


scapula

Trapezius

Triangle of auscultation

Latissimus dorsi

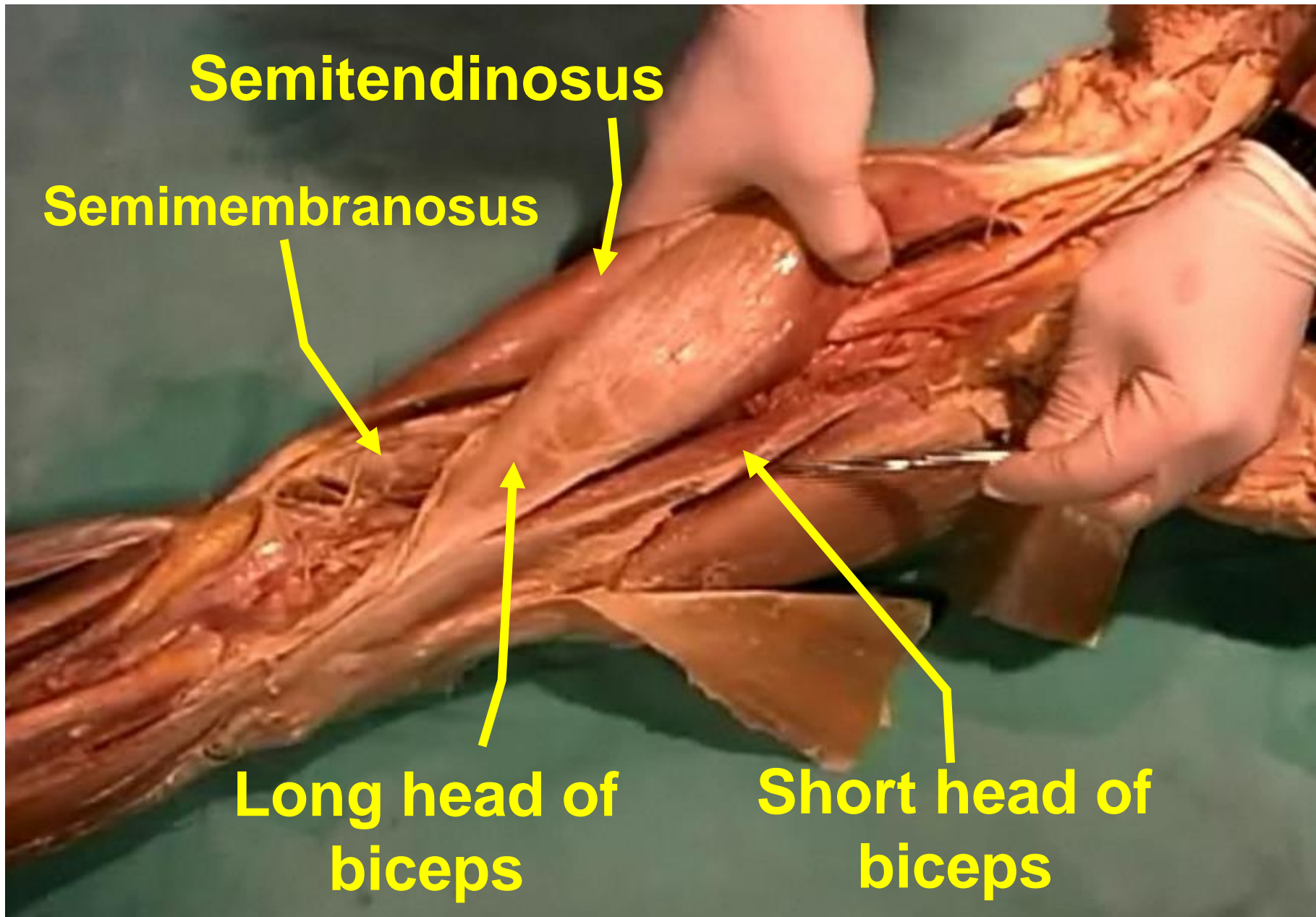


**Latissimus
dorsi**

**External
abdominal
oblique**

**Lumbar
triangle**

Iliac crest

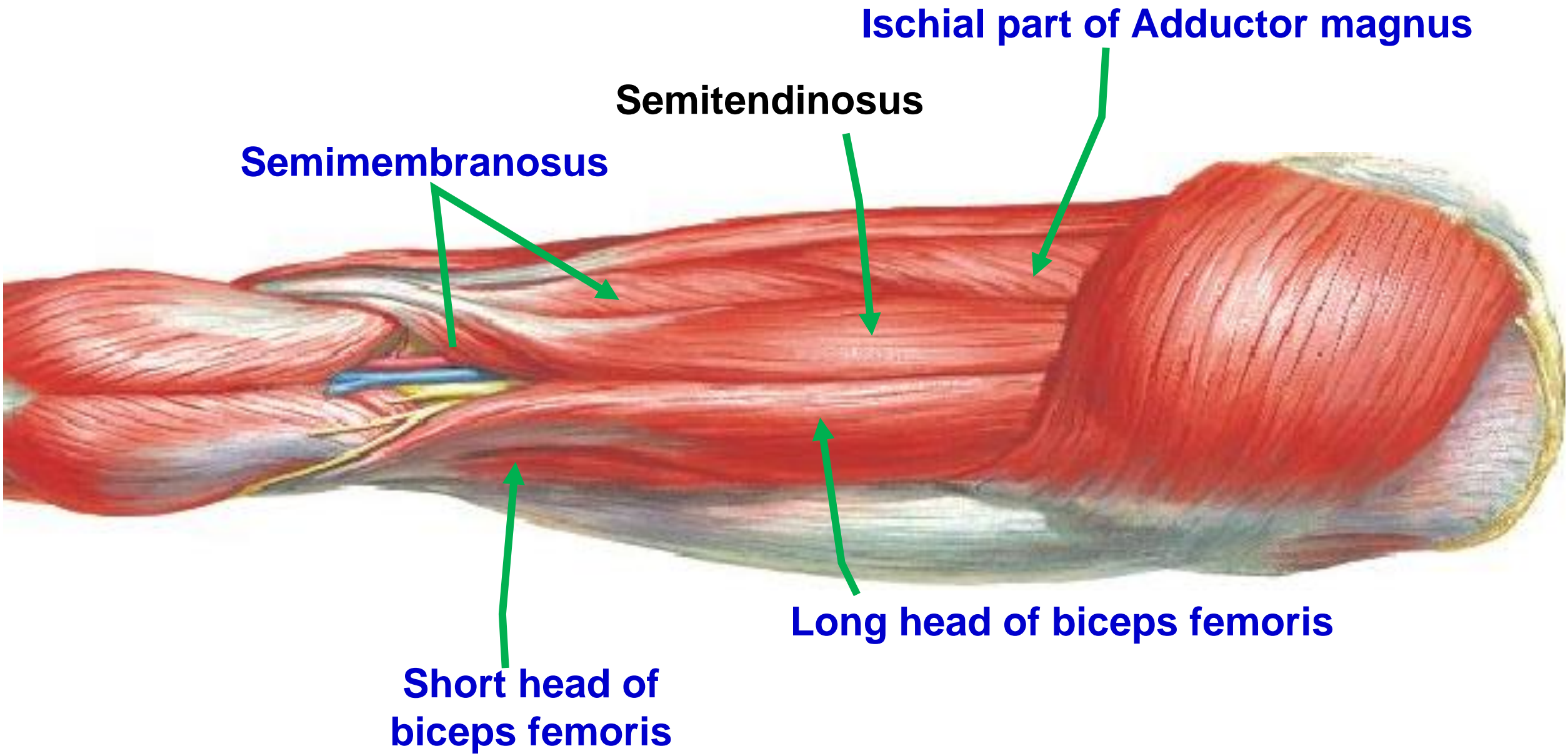


Semitendinosus

Semimembranosus

**Long head of
biceps**

**Short head of
biceps**



Ischial part of Adductor magnus

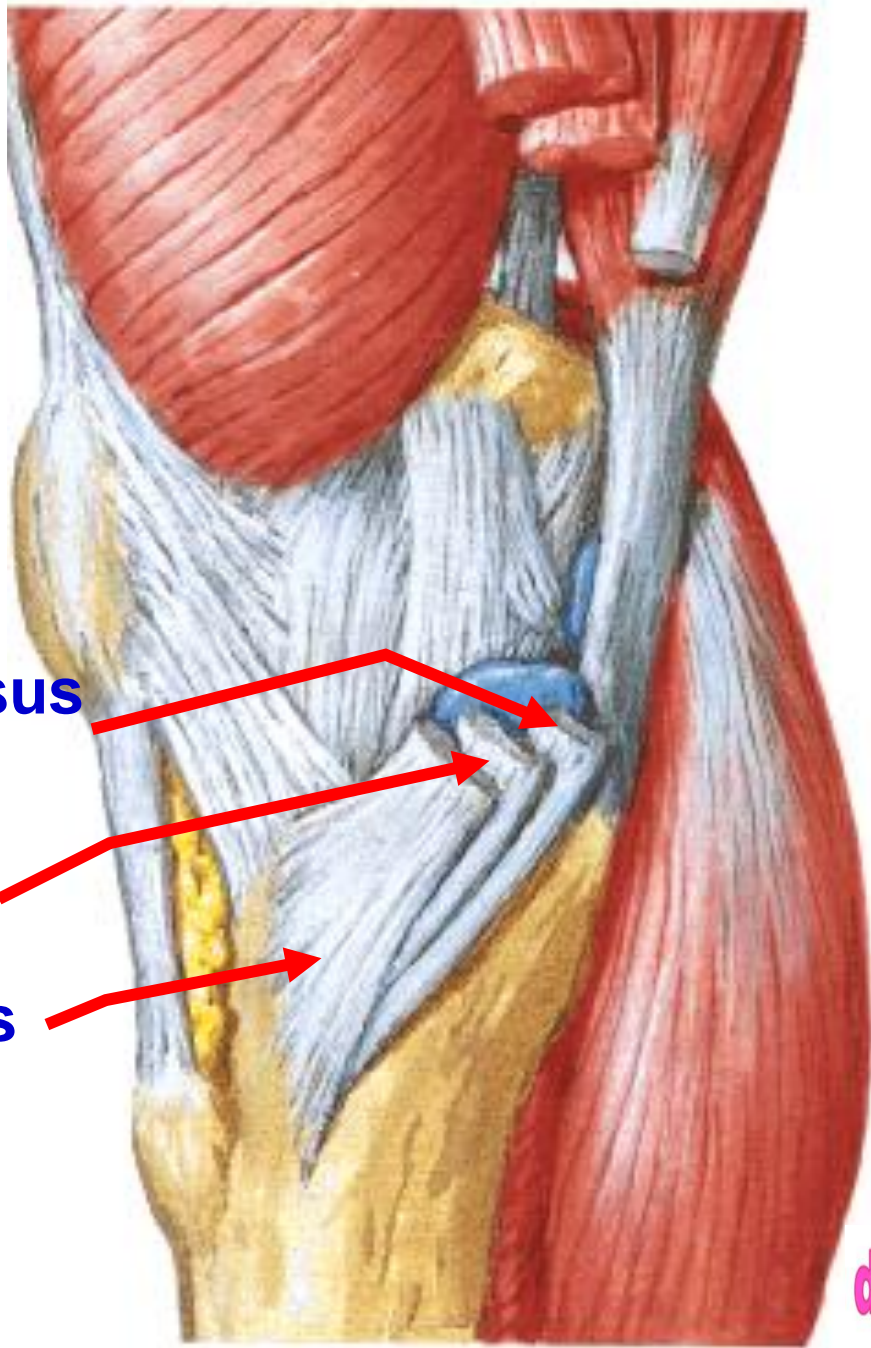
Semitendinosus

Semimembranosus

Long head of biceps femoris

Short head of biceps femoris

S
G
S

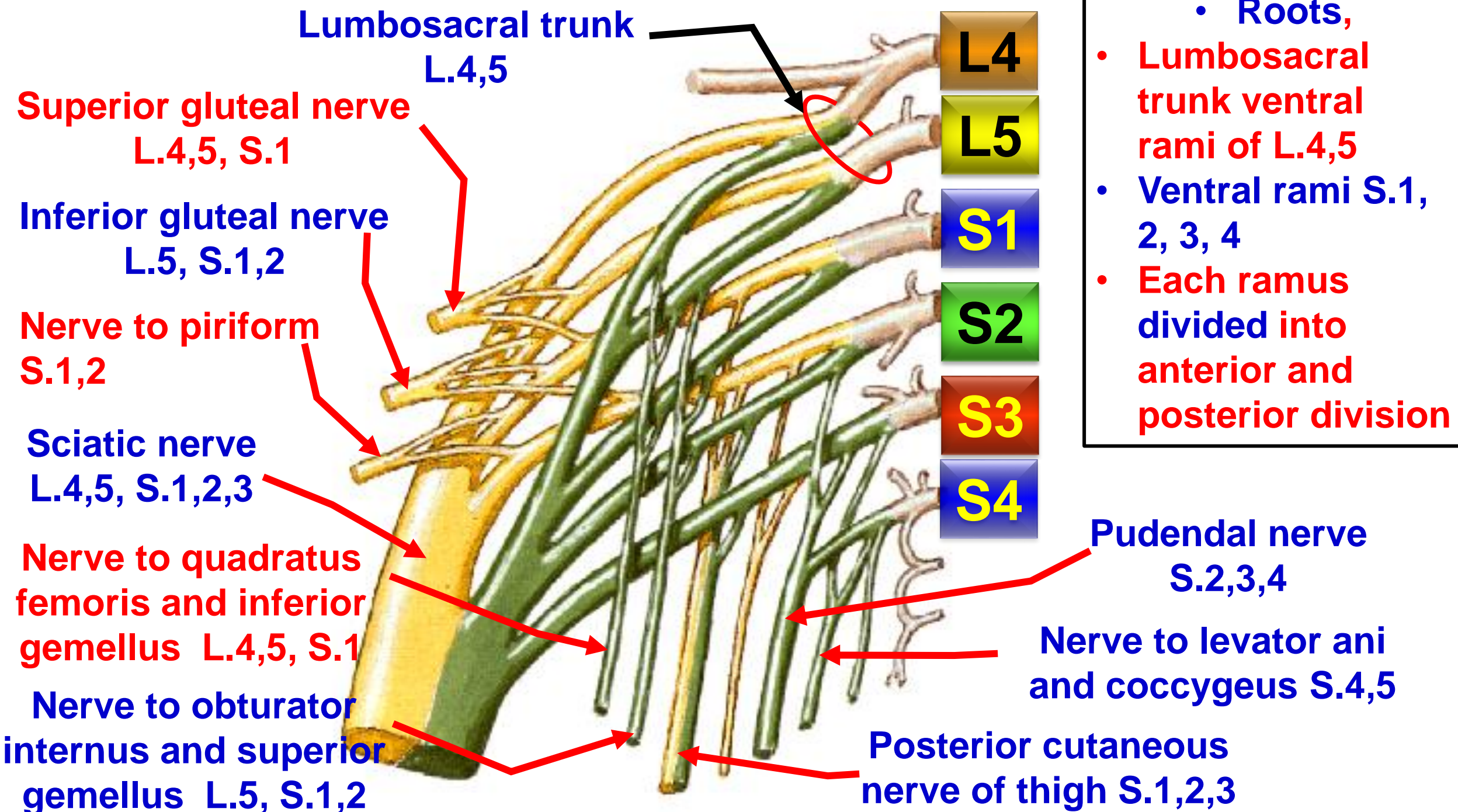


Semitendinosus

Gracilis

Sartorius

dr_youssefhusseini@yahoo.com



Lumbosacral trunk

L.4,5

Superior gluteal nerve
L.4,5, S.1

Inferior gluteal nerve
L.5, S.1,2

Nerve to piriform
S.1,2

Sciatic nerve
L.4,5, S.1,2,3

Nerve to quadratus femoris and inferior gemellus
L.4,5, S.1

Nerve to obturator internus and superior gemellus
L.5, S.1,2

L4

L5

S1

S2

S3

S4

- **Roots,**
- **Lumbosacral trunk ventral rami of L.4,5**
- **Ventral rami S.1, 2, 3, 4**
- **Each ramus divided into anterior and posterior division**

Pudendal nerve
S.2,3,4

Nerve to levator ani and coccygeus
S.4,5

Posterior cutaneous nerve of thigh
S.1,2,3

sciatic bed

Gluteus maximus

Piriform

Greater sciatic foramen

Sciatic nerve

Long head of biceps (lat)

Semitendinosus (med)

Semimembranosus (med)

Tibial nerve

1- Superior gemellus

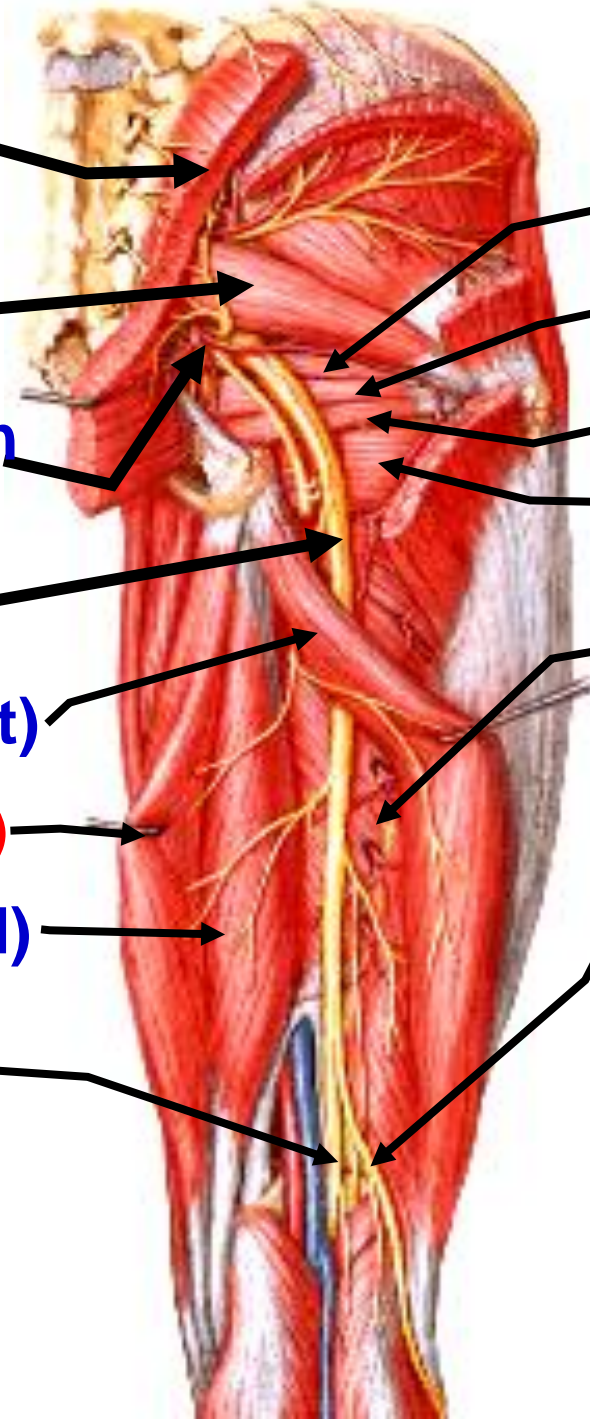
2- Obturator internus

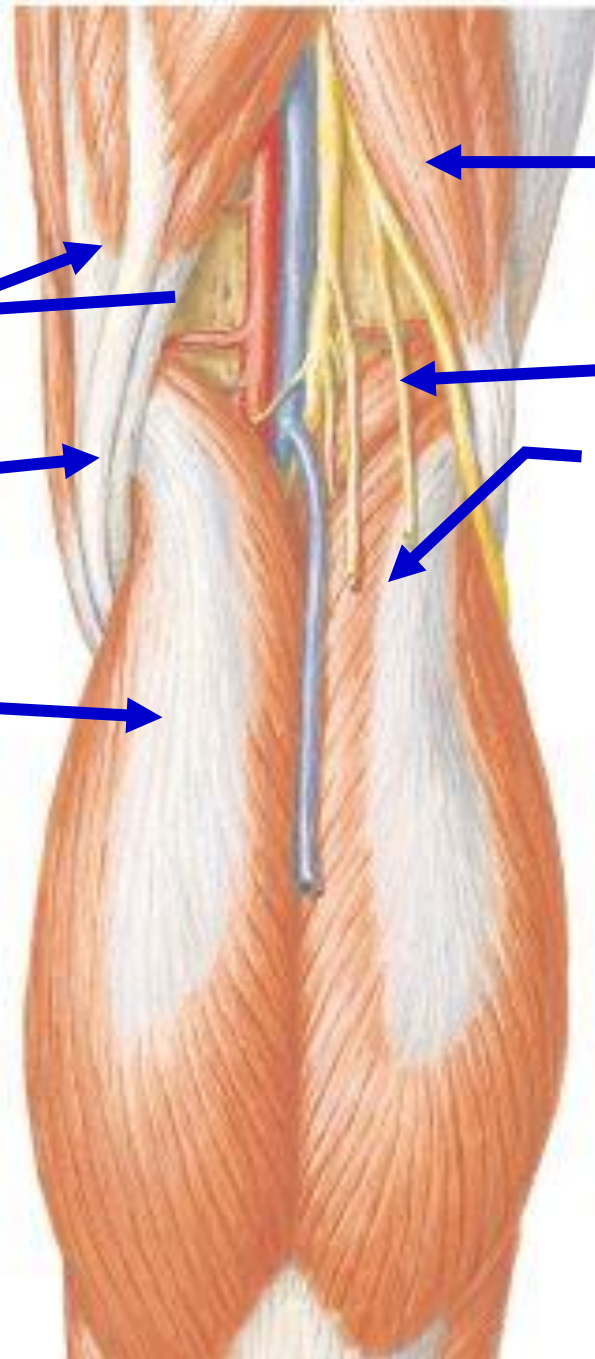
3- Inferior gemellus

4- Quadratus femoris

5- Adductor magnus

Common peroneal nerve





Upper lateral

Biceps femoris

Upper medial

Semimembranosus

Plantaris

Lower lateral

Semitendinosus

Lateral head of gastrocnemius

Lower medial

Medial head of gastrocnemius

Popliteal vein
Popliteal artery



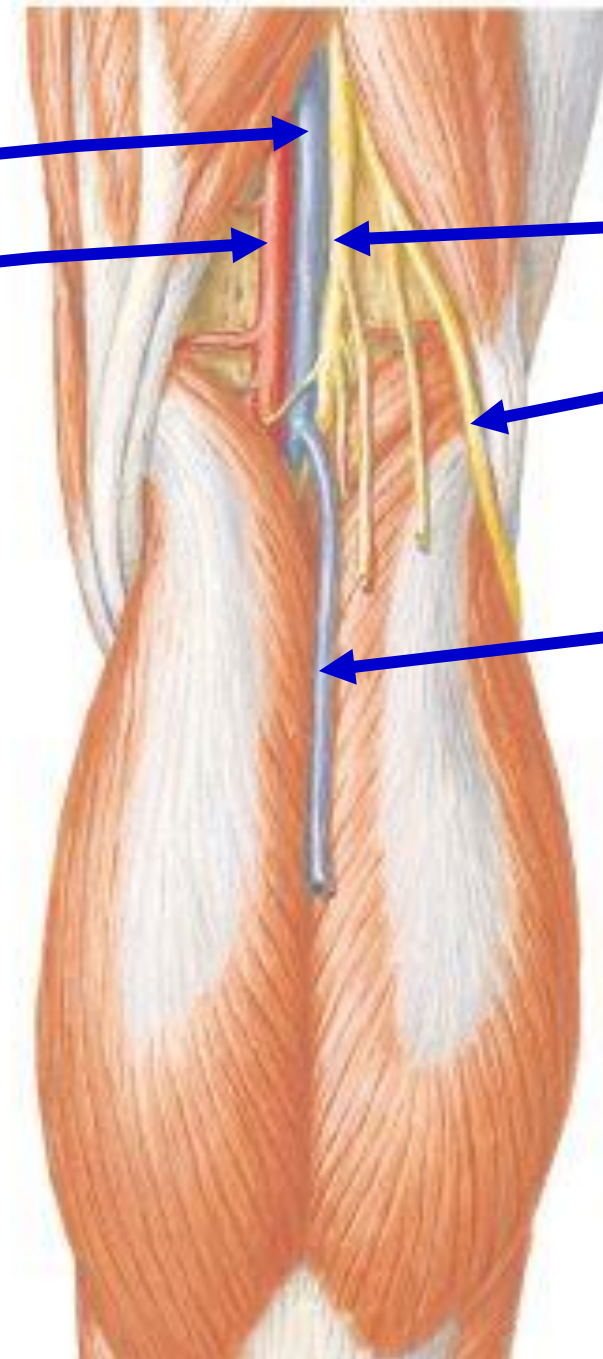
Tibial nerve

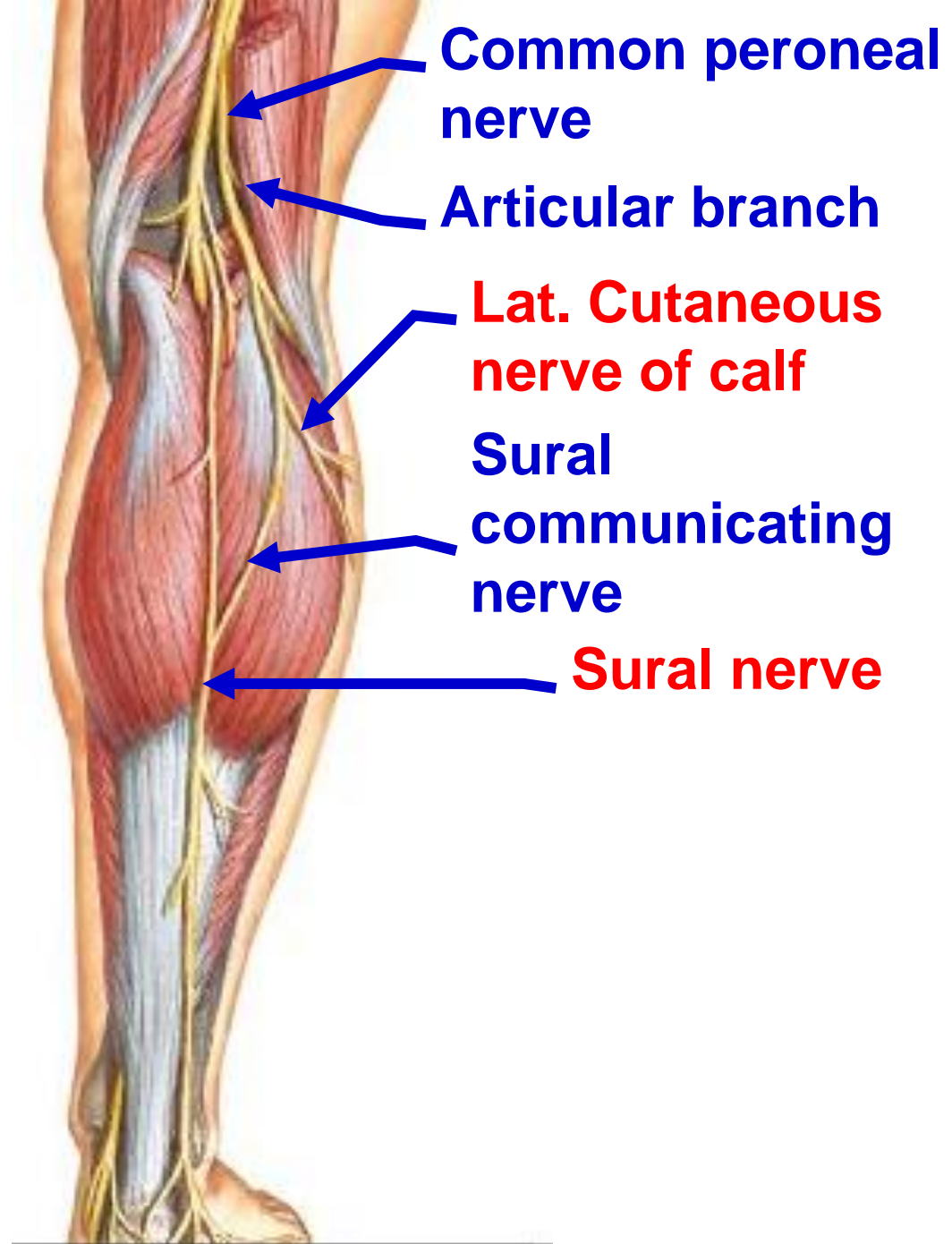


Common peroneal nerve



Small saphenous vein





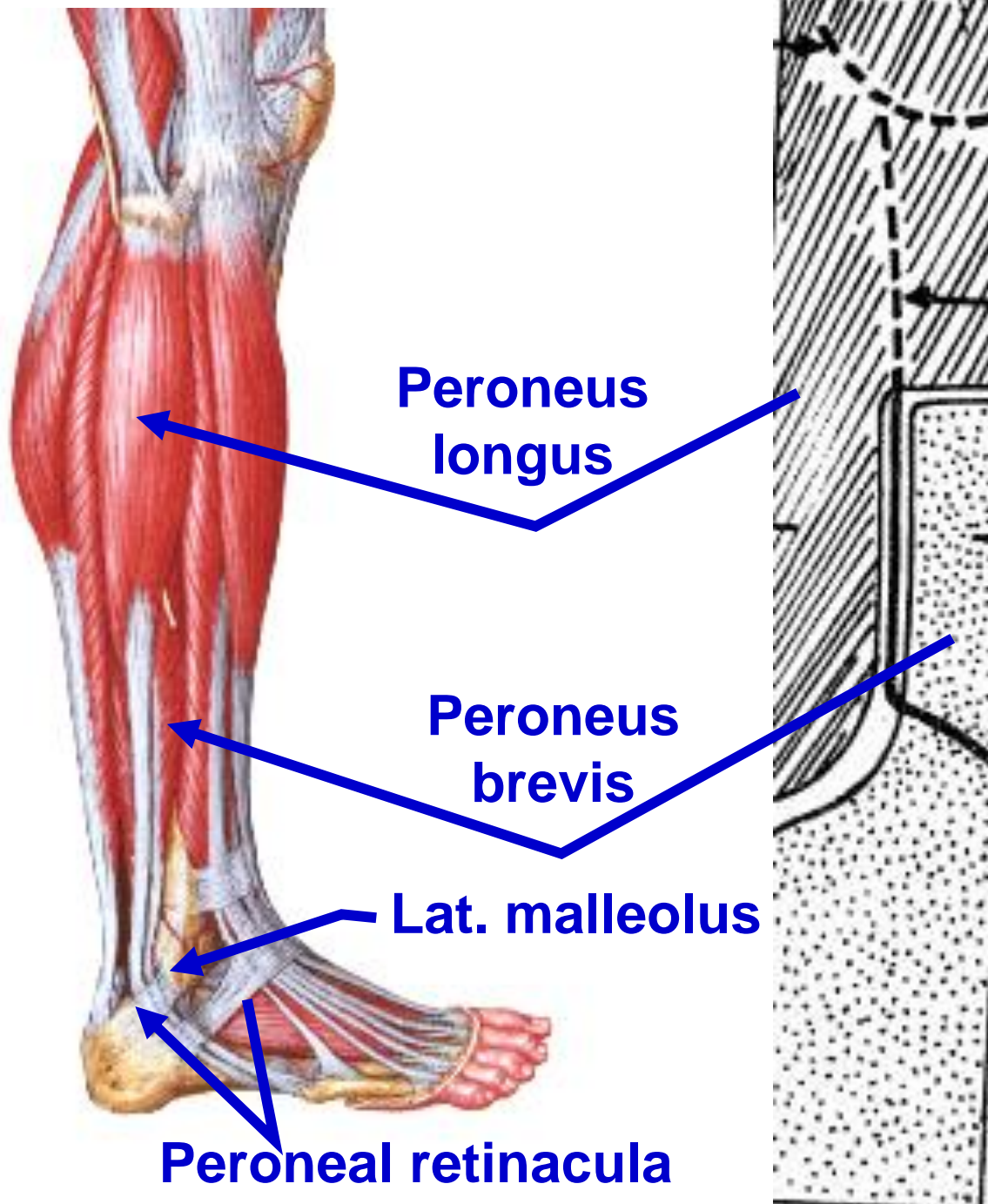
Common peroneal nerve

Articular branch

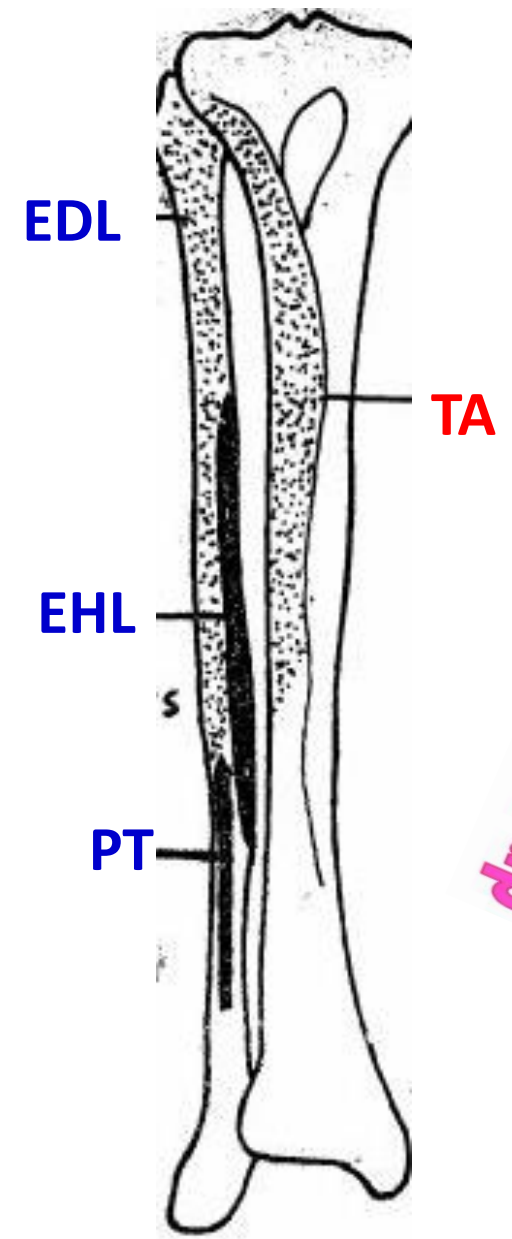
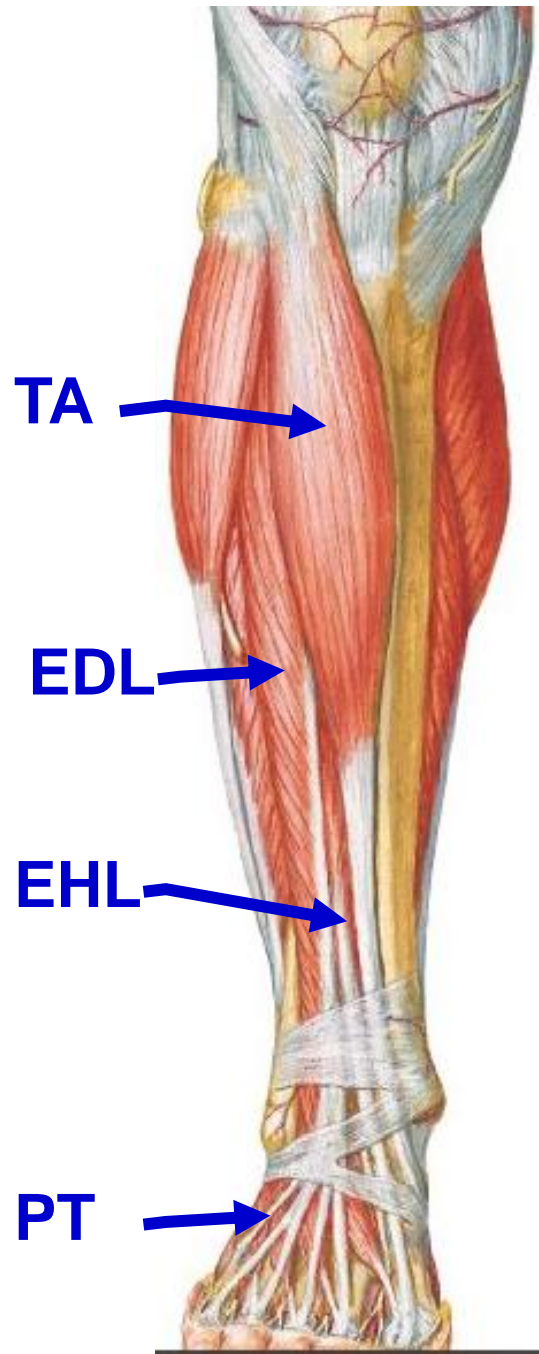
Lat. Cutaneous nerve of calf

Sural communicating nerve

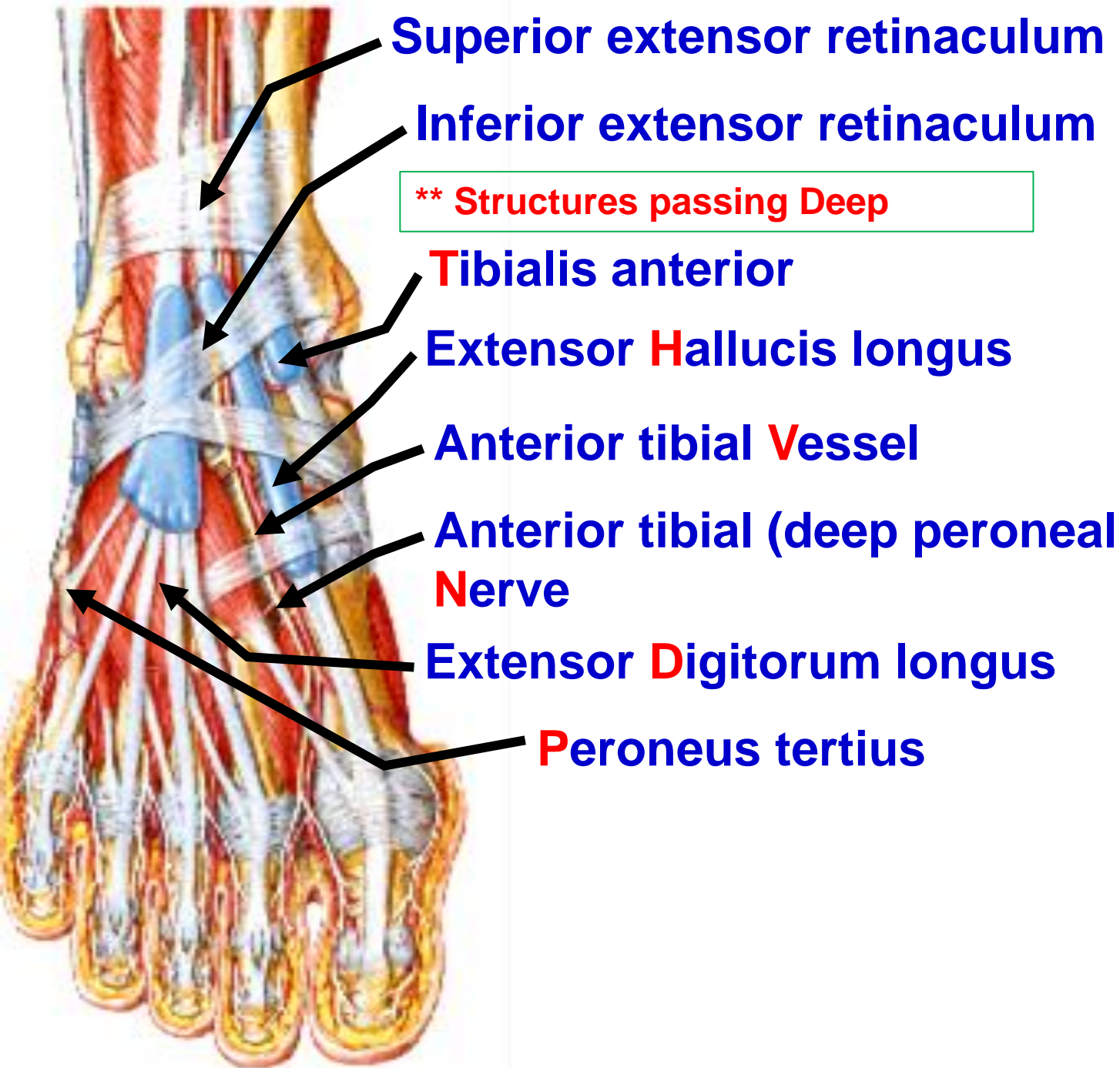
Sural nerve

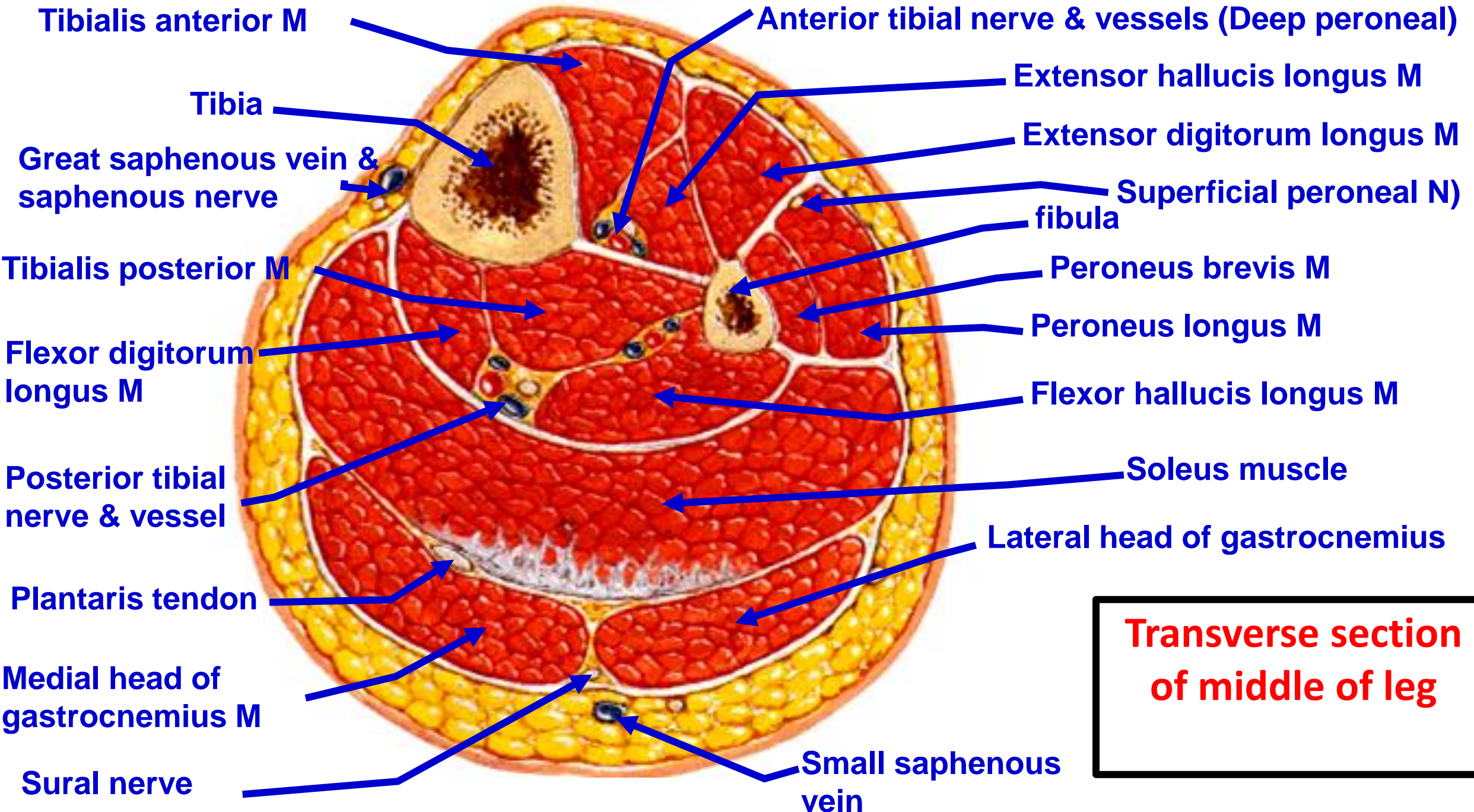


dr_youssefhussein@yahoo.com



dr_youssefhussein@yahoo.com





Tibialis anterior M

Tibia

Great saphenous vein & saphenous nerve

Tibialis posterior M

Flexor digitorum longus M

Posterior tibial nerve & vessel

Plantaris tendon

Medial head of gastrocnemius M

Sural nerve

Anterior tibial nerve & vessels (Deep peroneal)

Extensor hallucis longus M

Extensor digitorum longus M

Superficial peroneal N)

fibula

Peroneus brevis M

Peroneus longus M

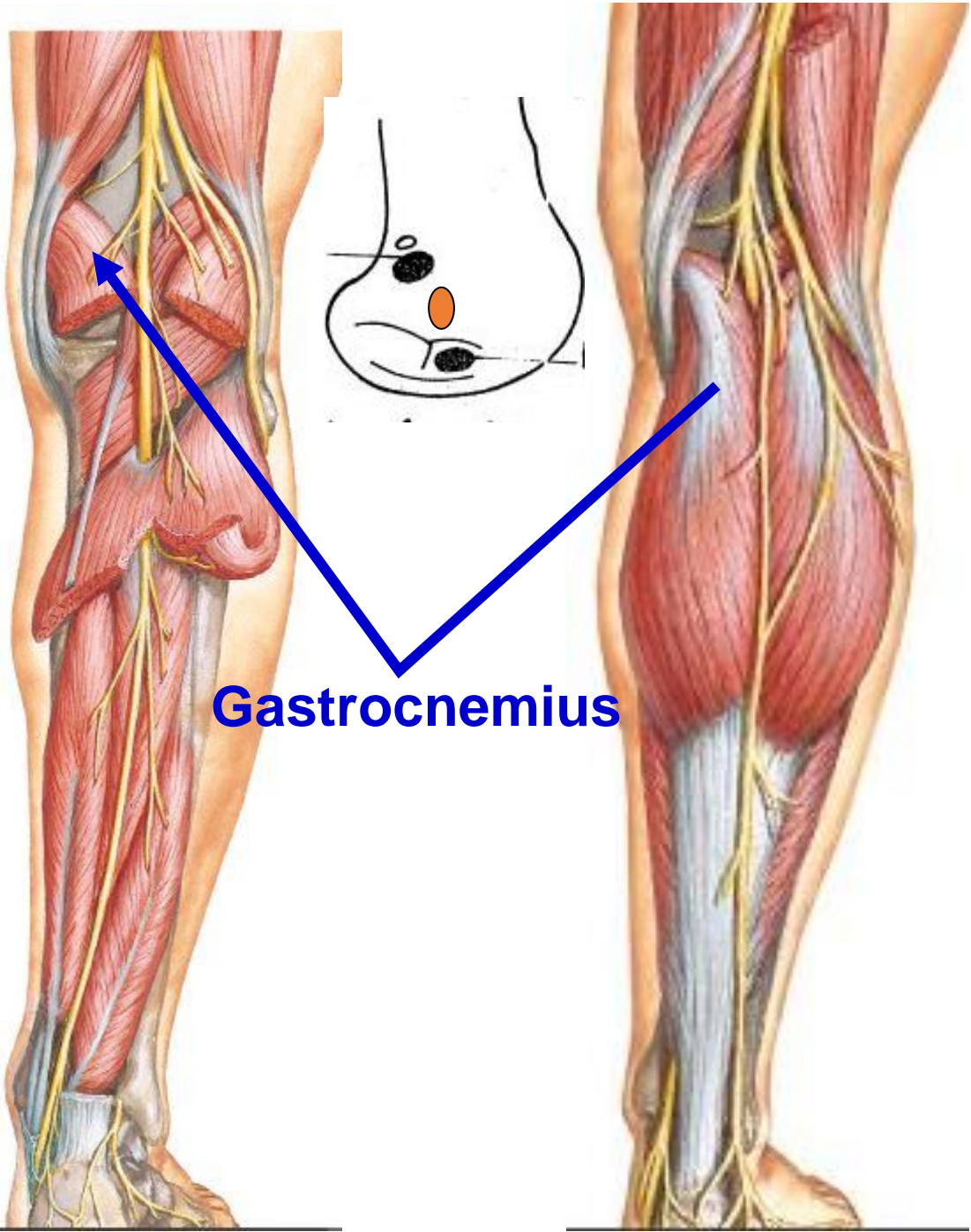
Flexor hallucis longus M

Soleus muscle

Lateral head of gastrocnemius

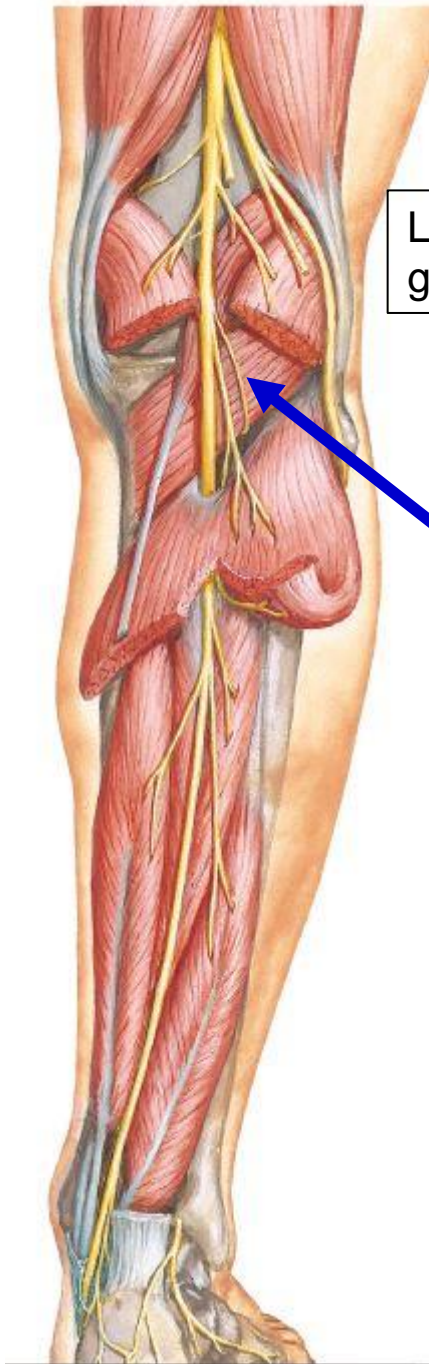
Small saphenous vein

Transverse section of middle of leg



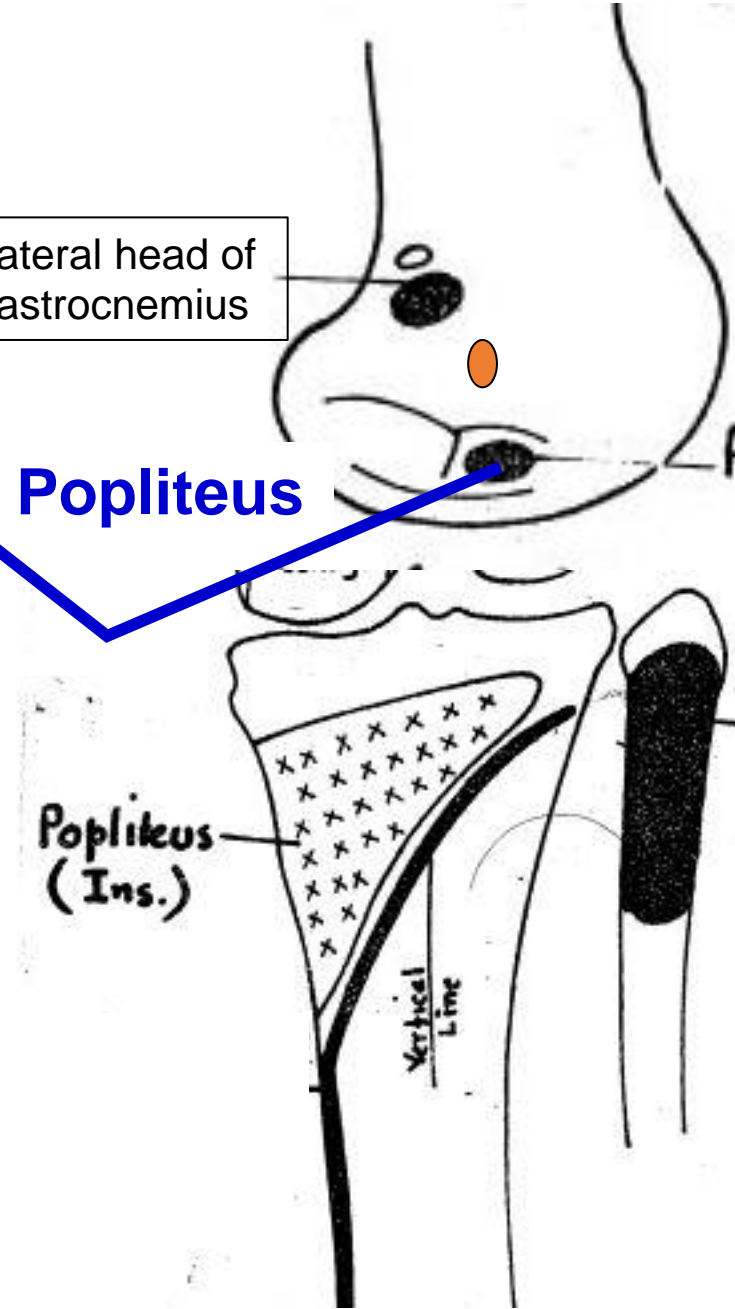
Gastrocnemius

dr_youssefhussein@yahoo.com



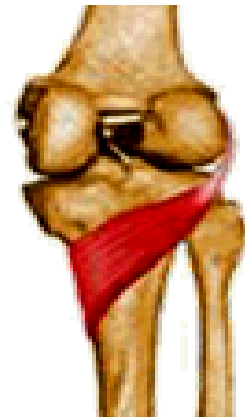
Lateral head of gastrocnemius

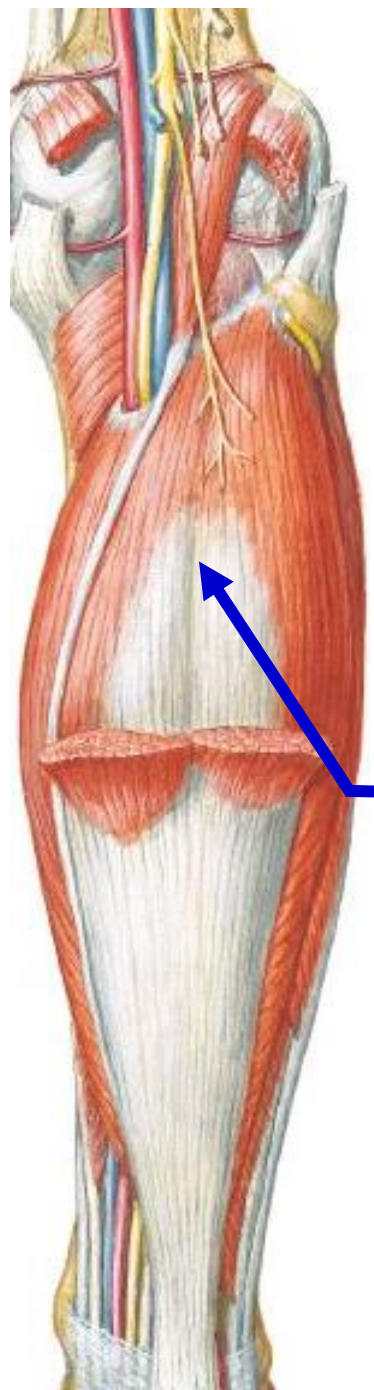
Popliteus



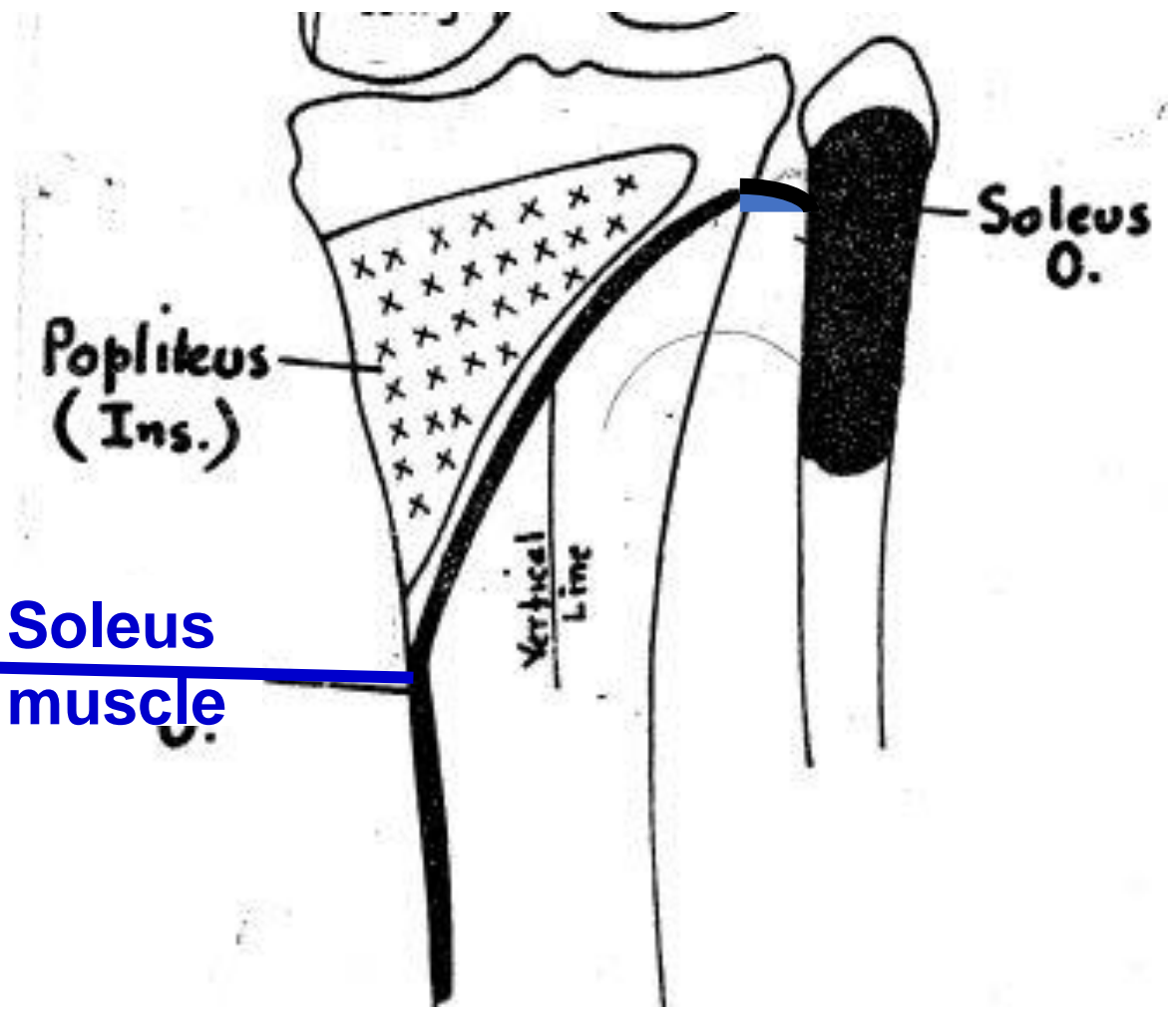
Popliteus
(Ins.)

Vertical
Line

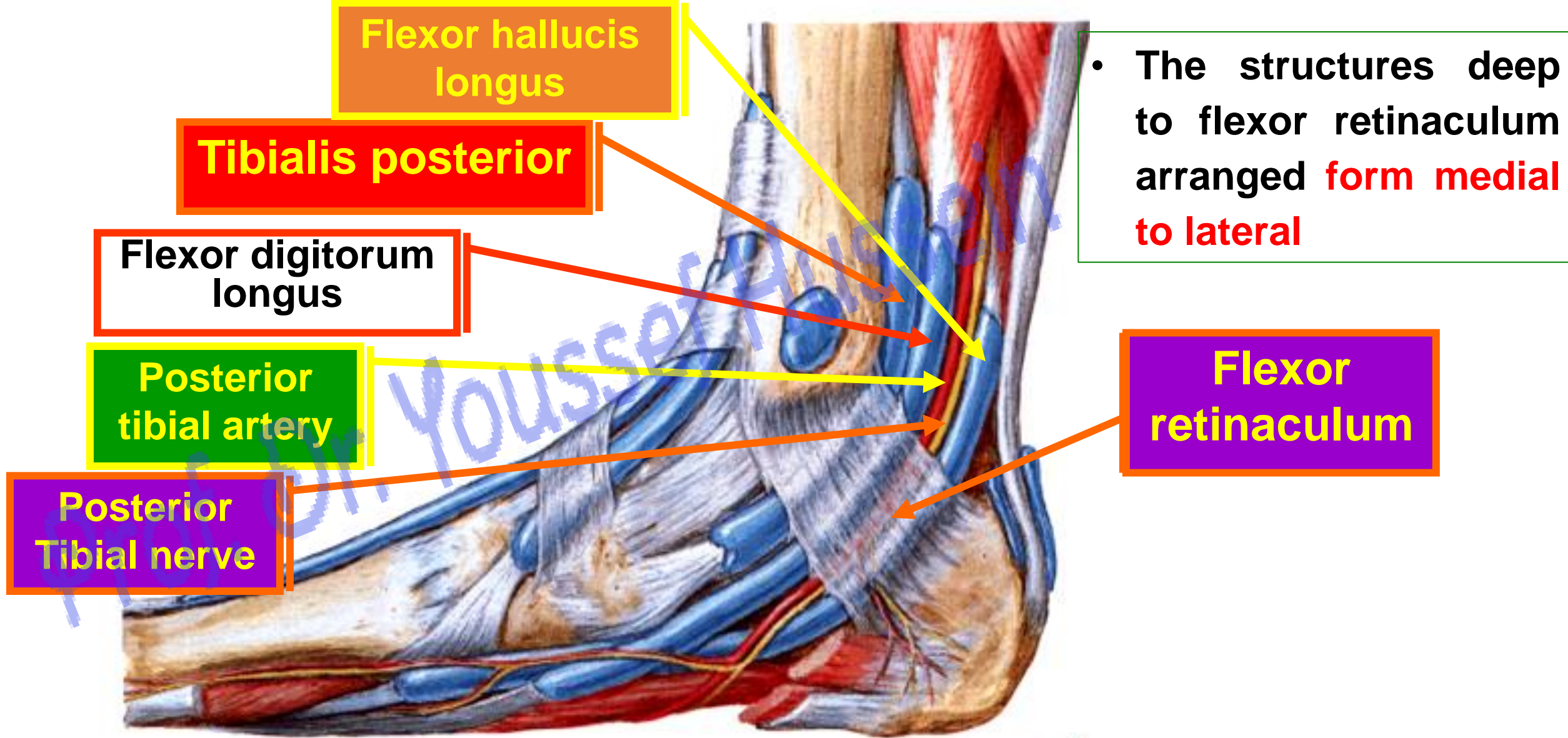




Soleus muscle



dr_youssefhussein@yahoo.com



- The structures deep to flexor retinaculum arranged from medial to lateral

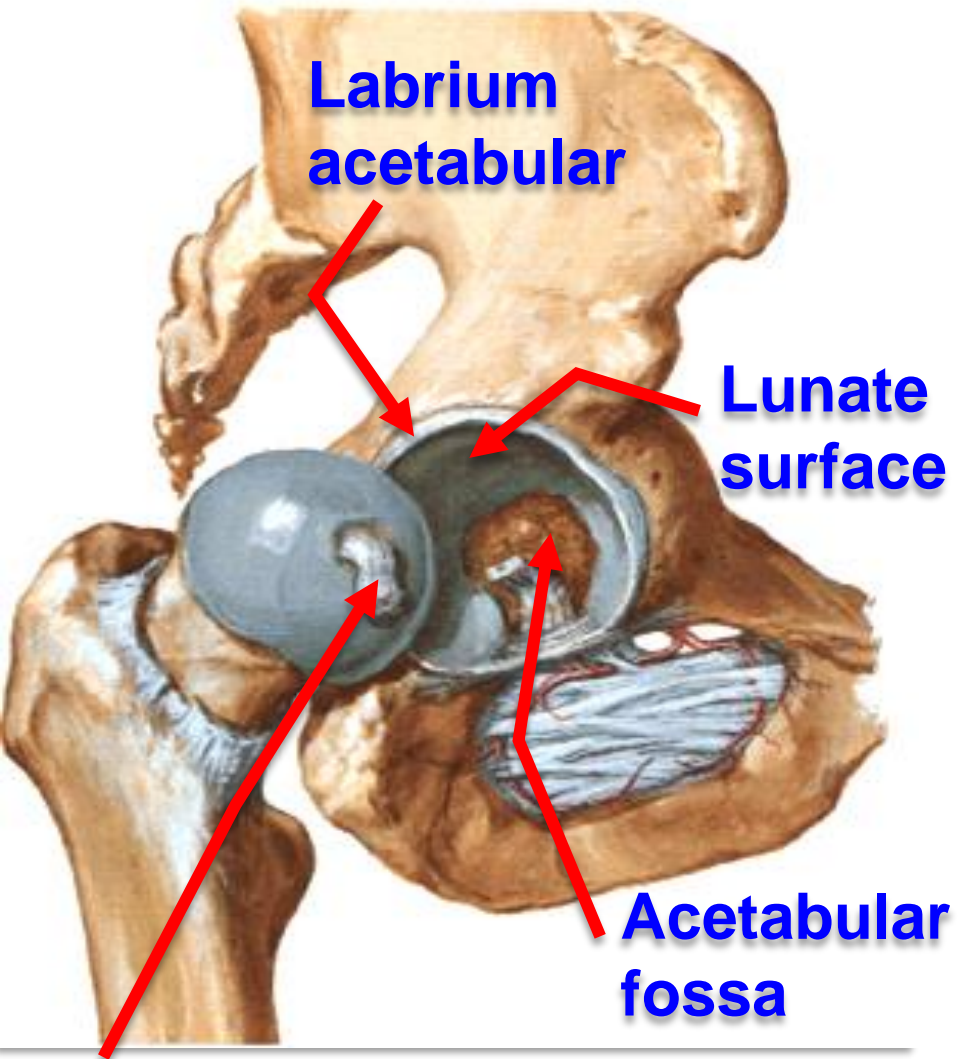
Tom

Designs

Very

Nice

House



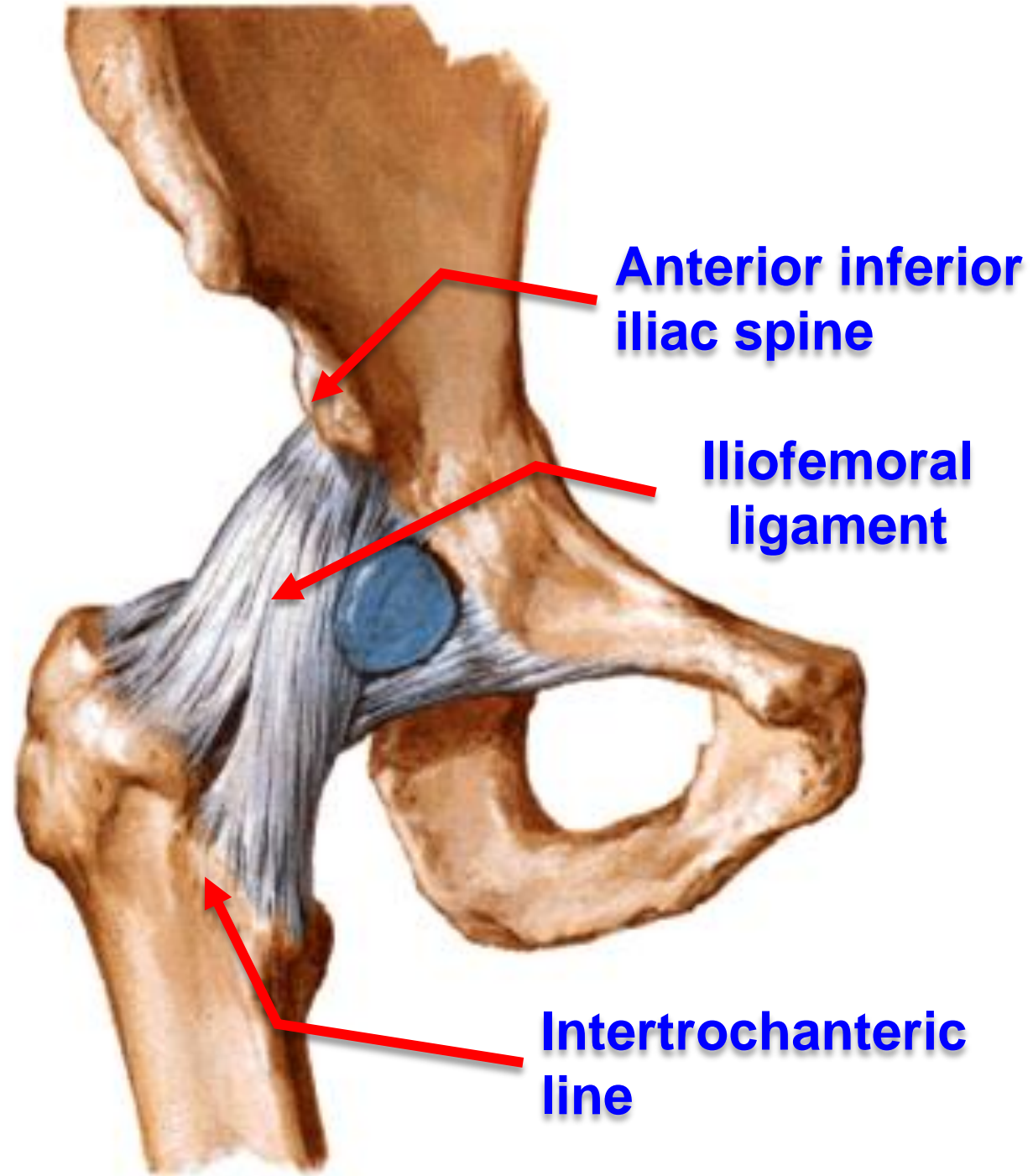
**Labrium
acetabular**

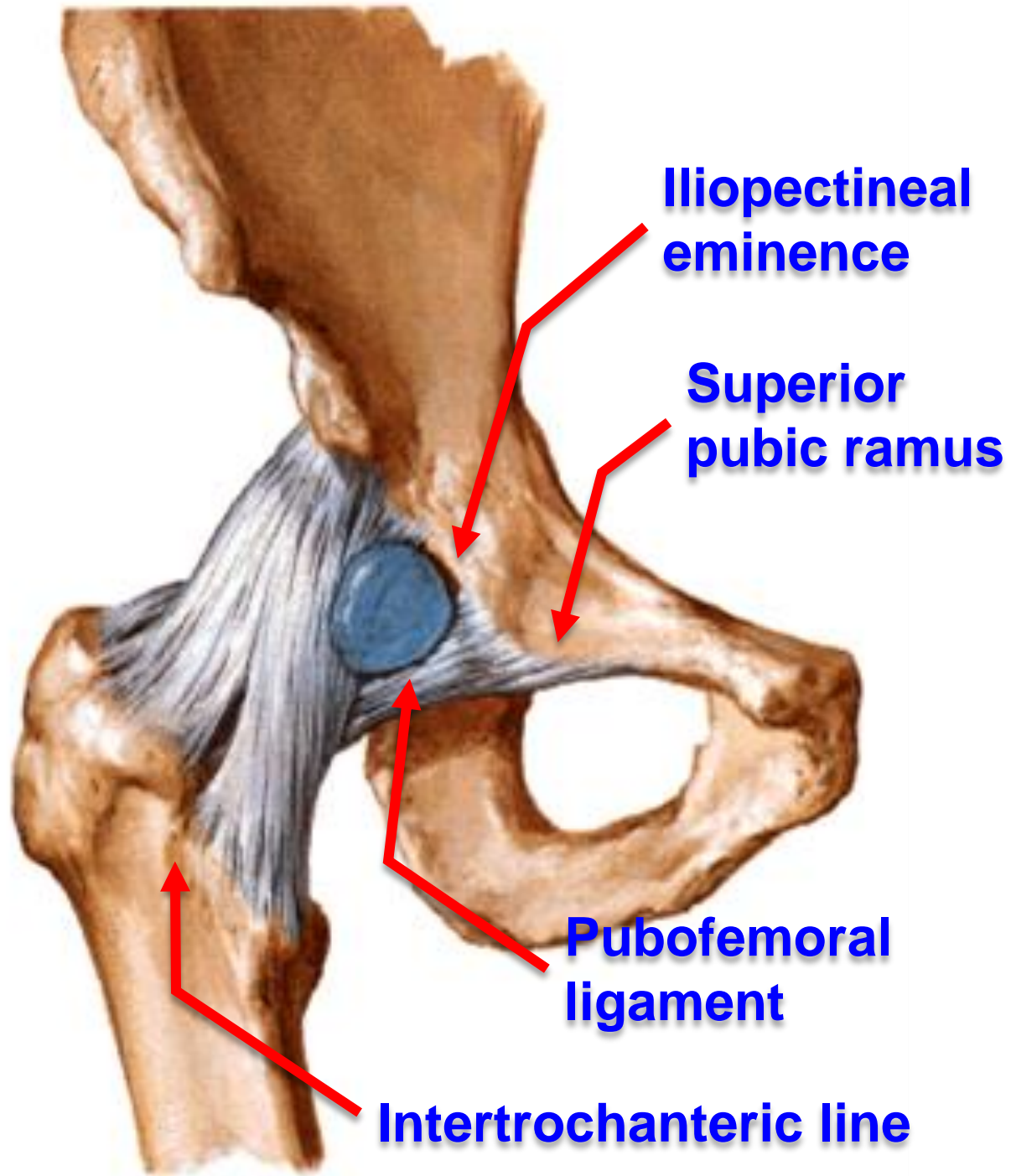
**Lunate
surface**

**Acetabular
fossa**

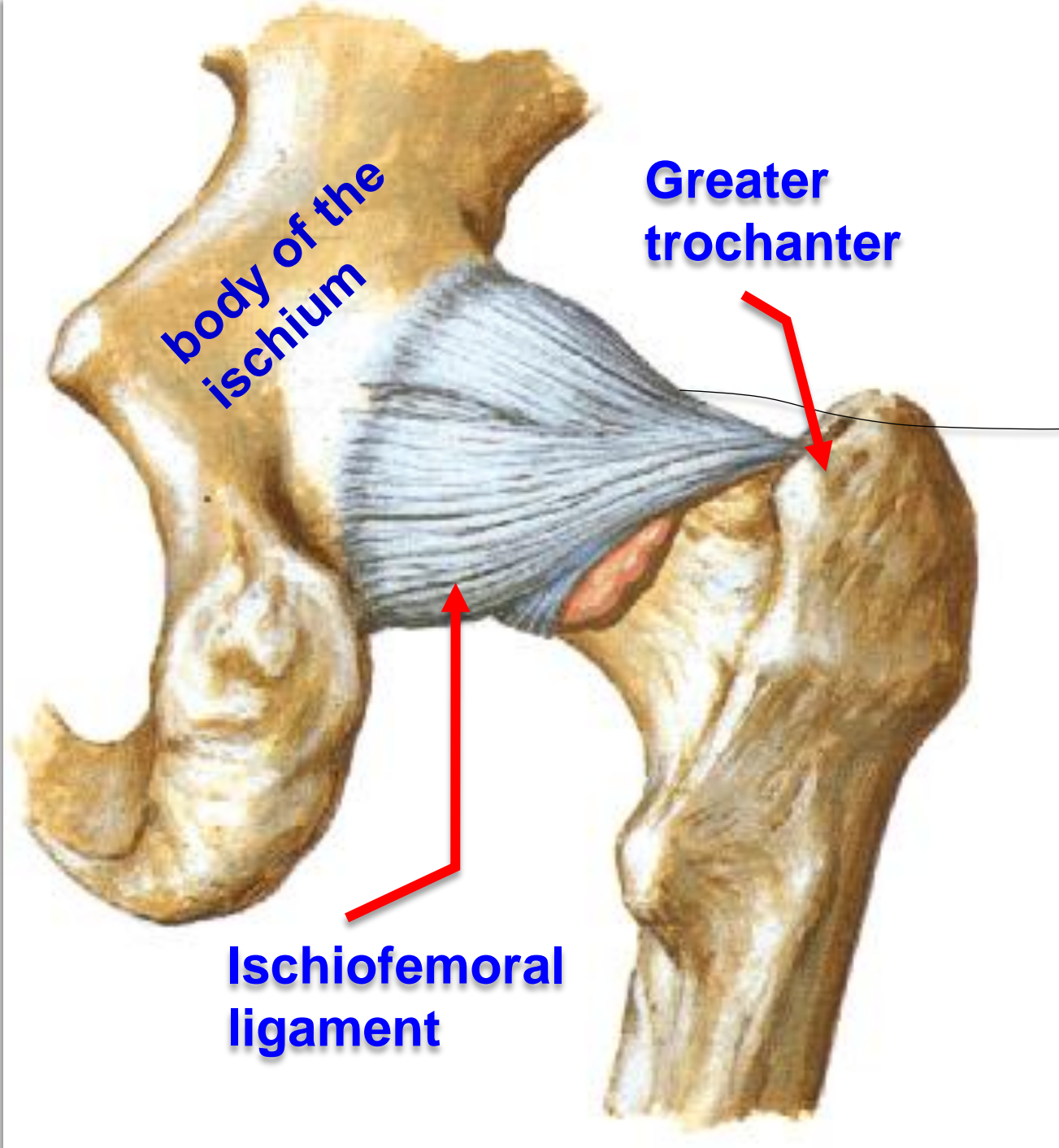
**Ligament of
Head of femur**

dr_youssefhussein@yahoo.com

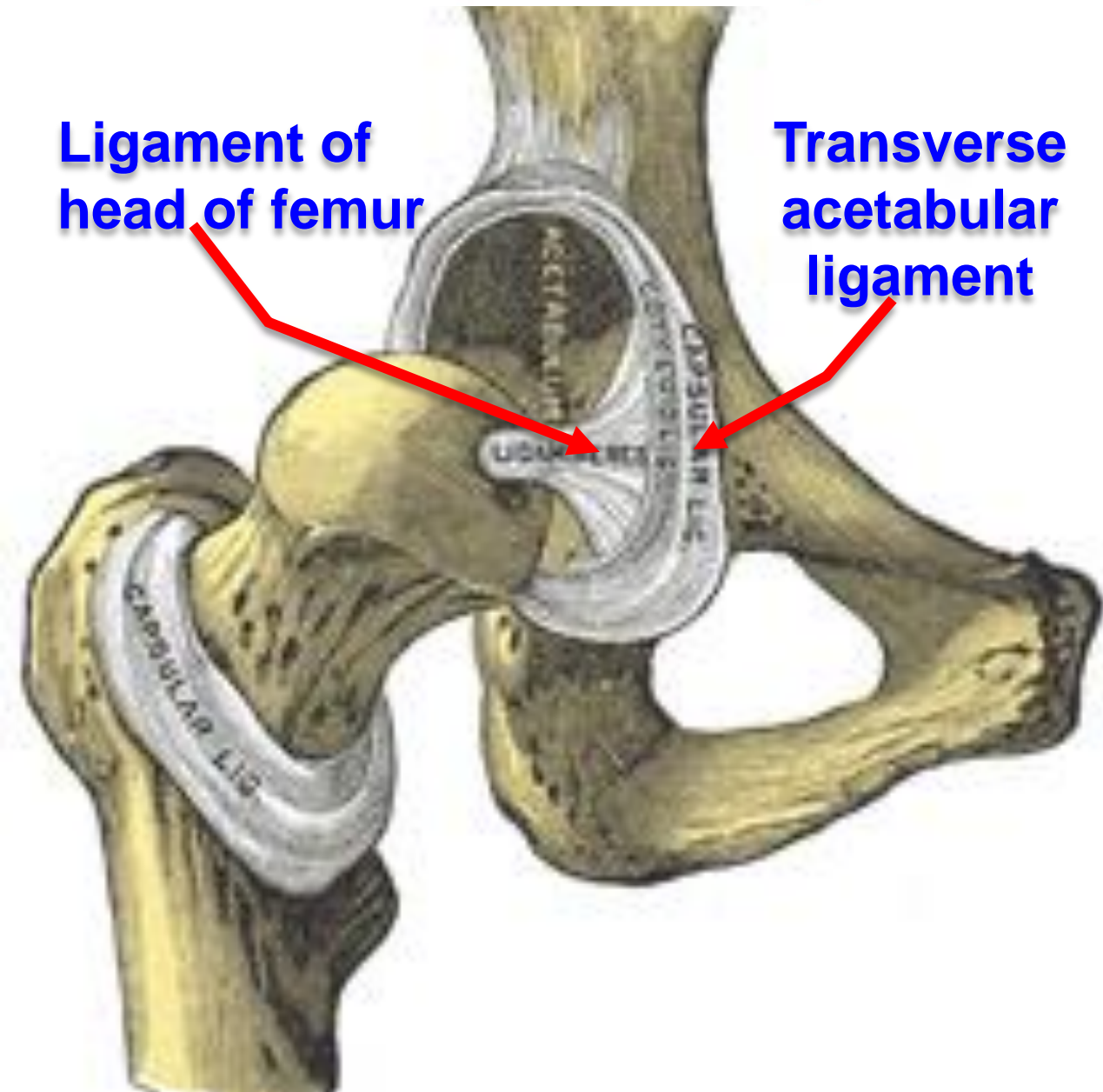




dr_youssefhussein@yahoo.com



dr_youssefhusseini@yahoo.com



Medial condyle of femur

Lateral condyle of femur

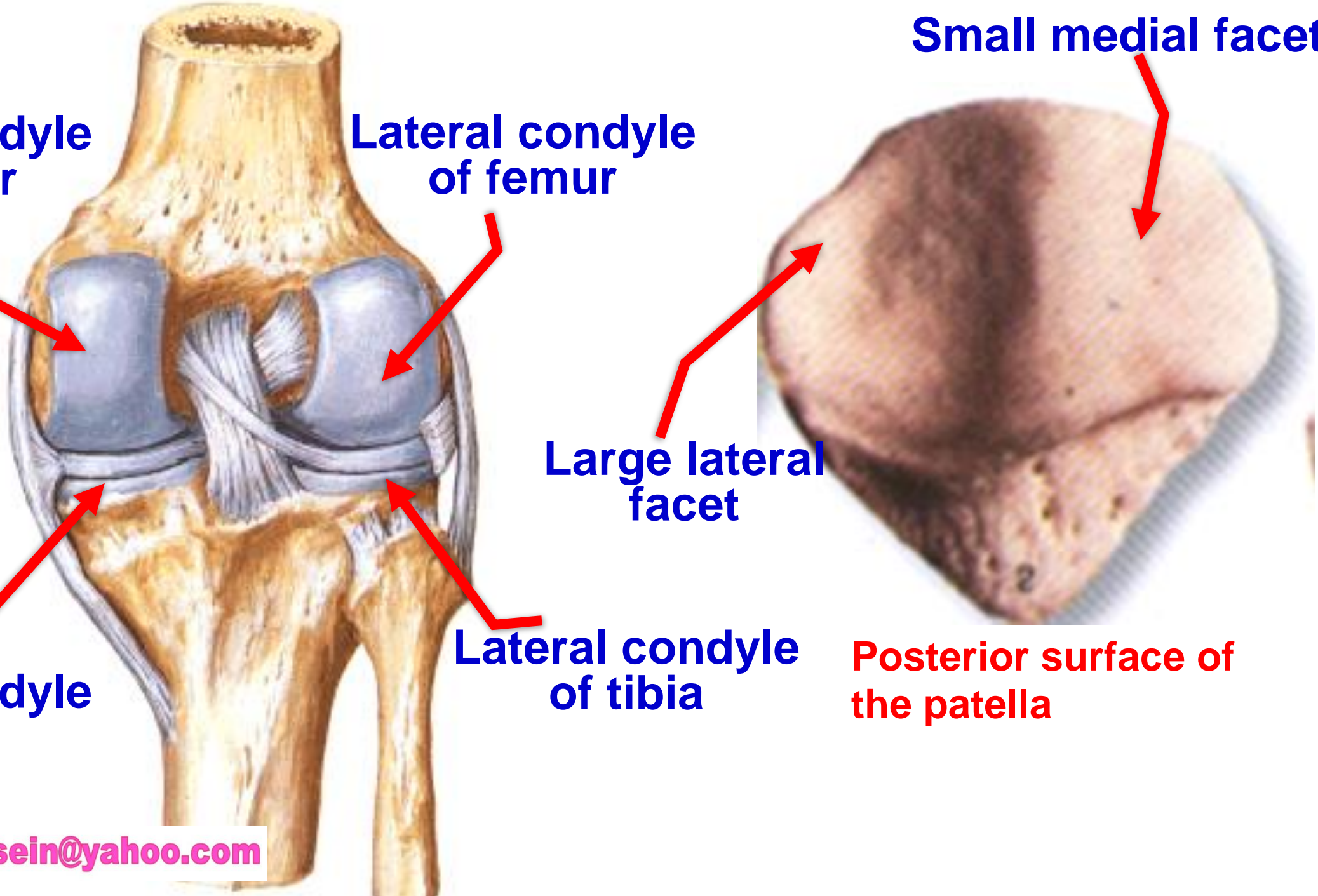
Small medial facet

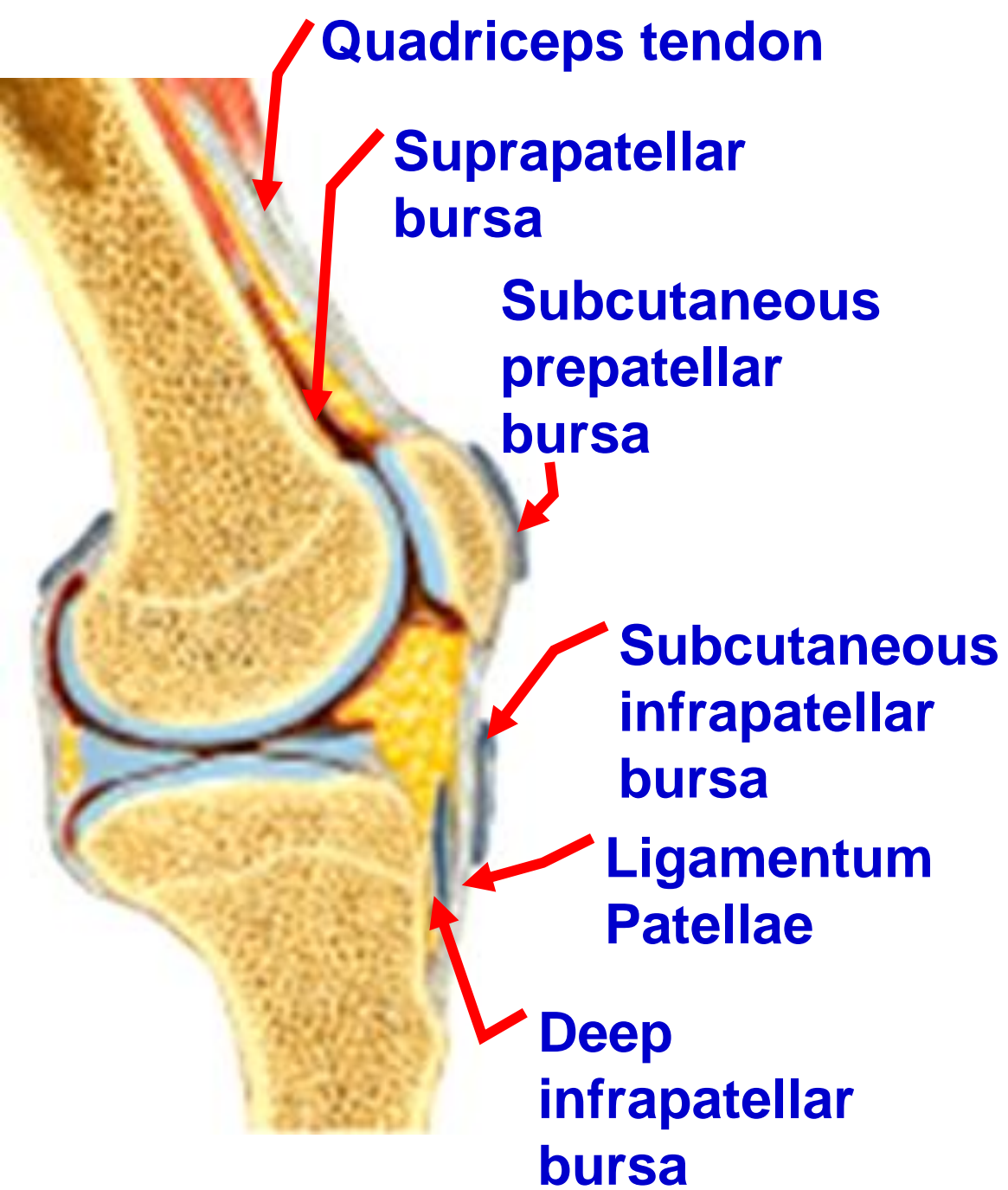
Medial condyle of tibia

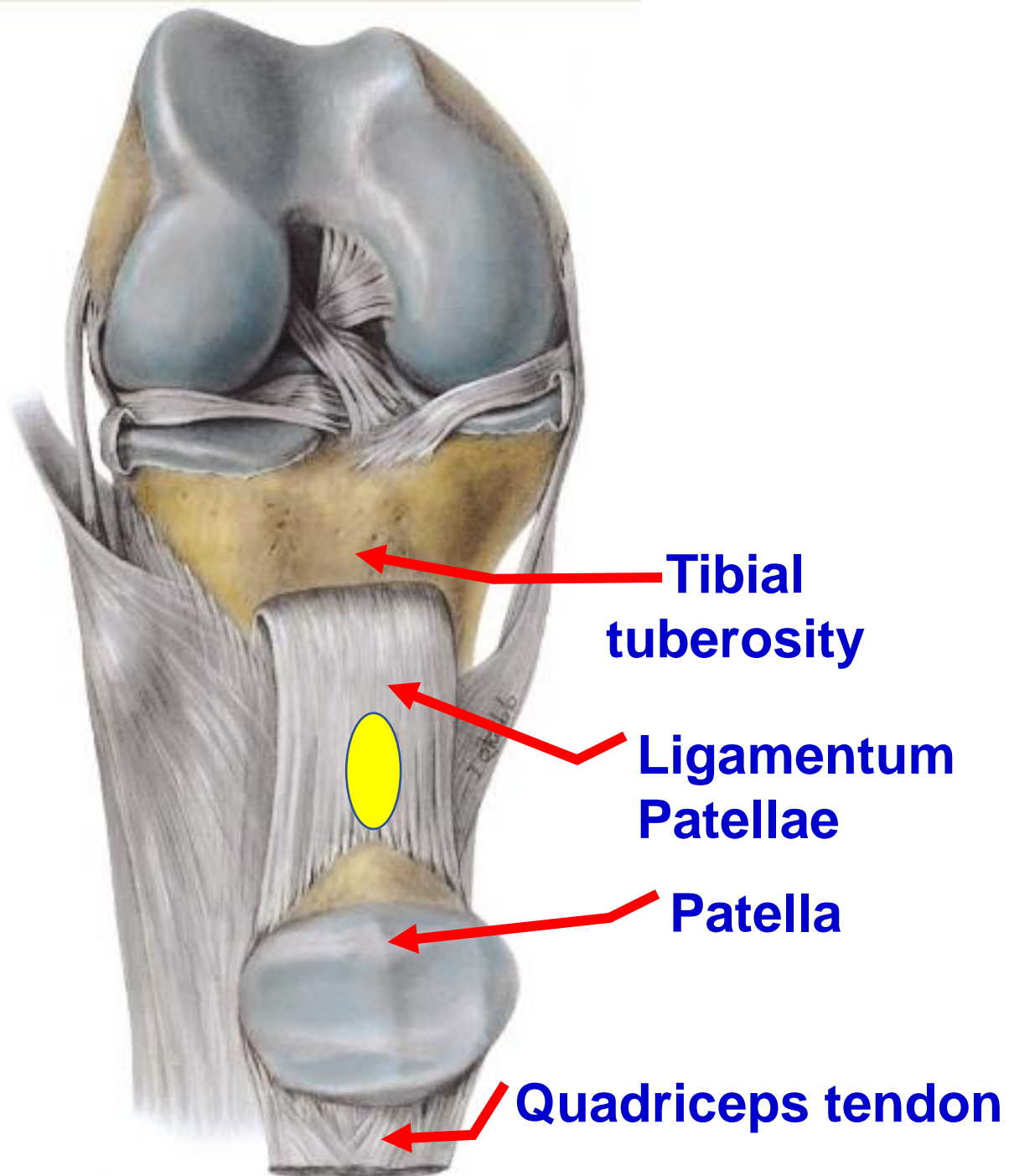
Lateral condyle of tibia

Large lateral facet

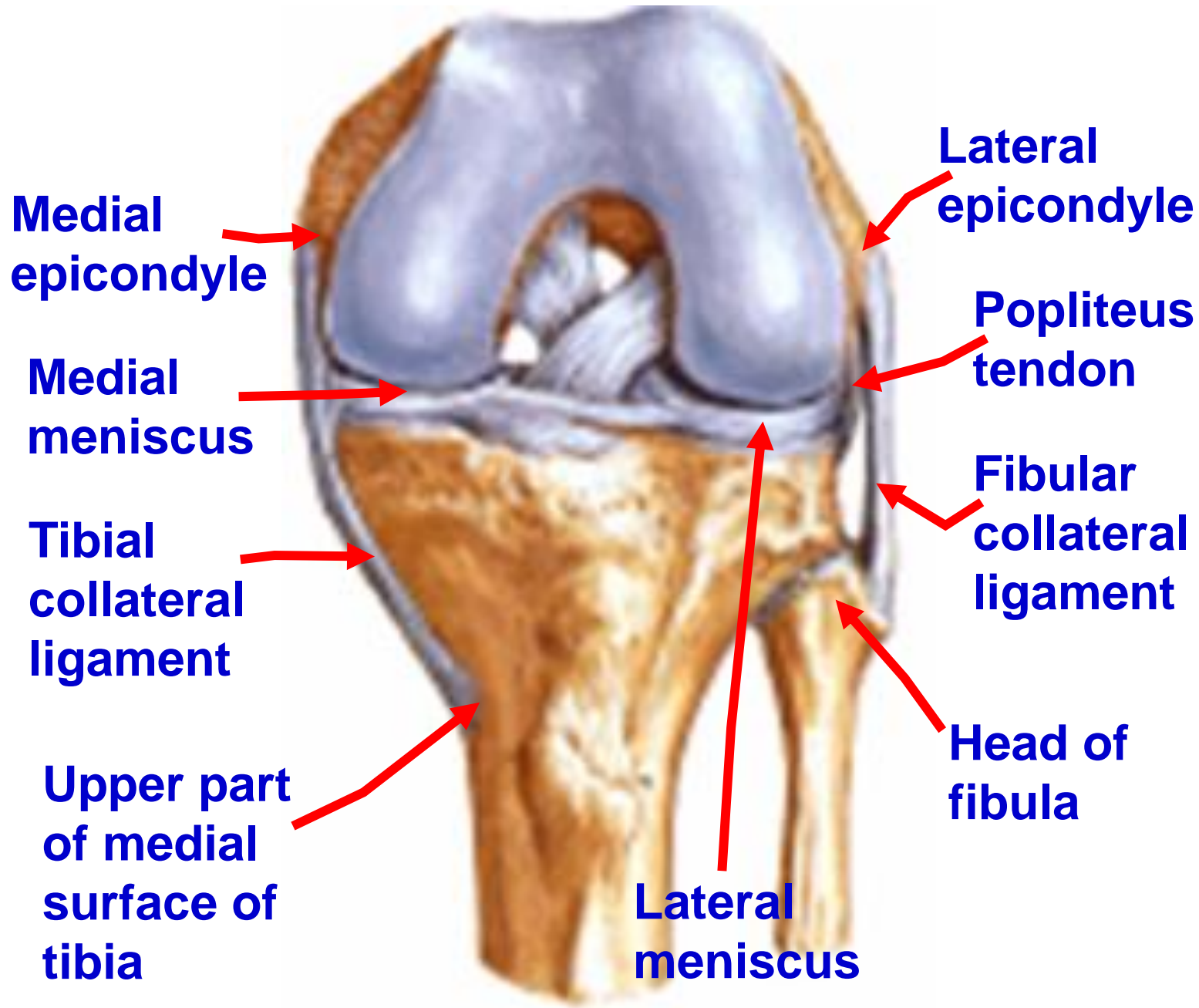
Posterior surface of the patella







dr_youssefhussein@yahoo.com



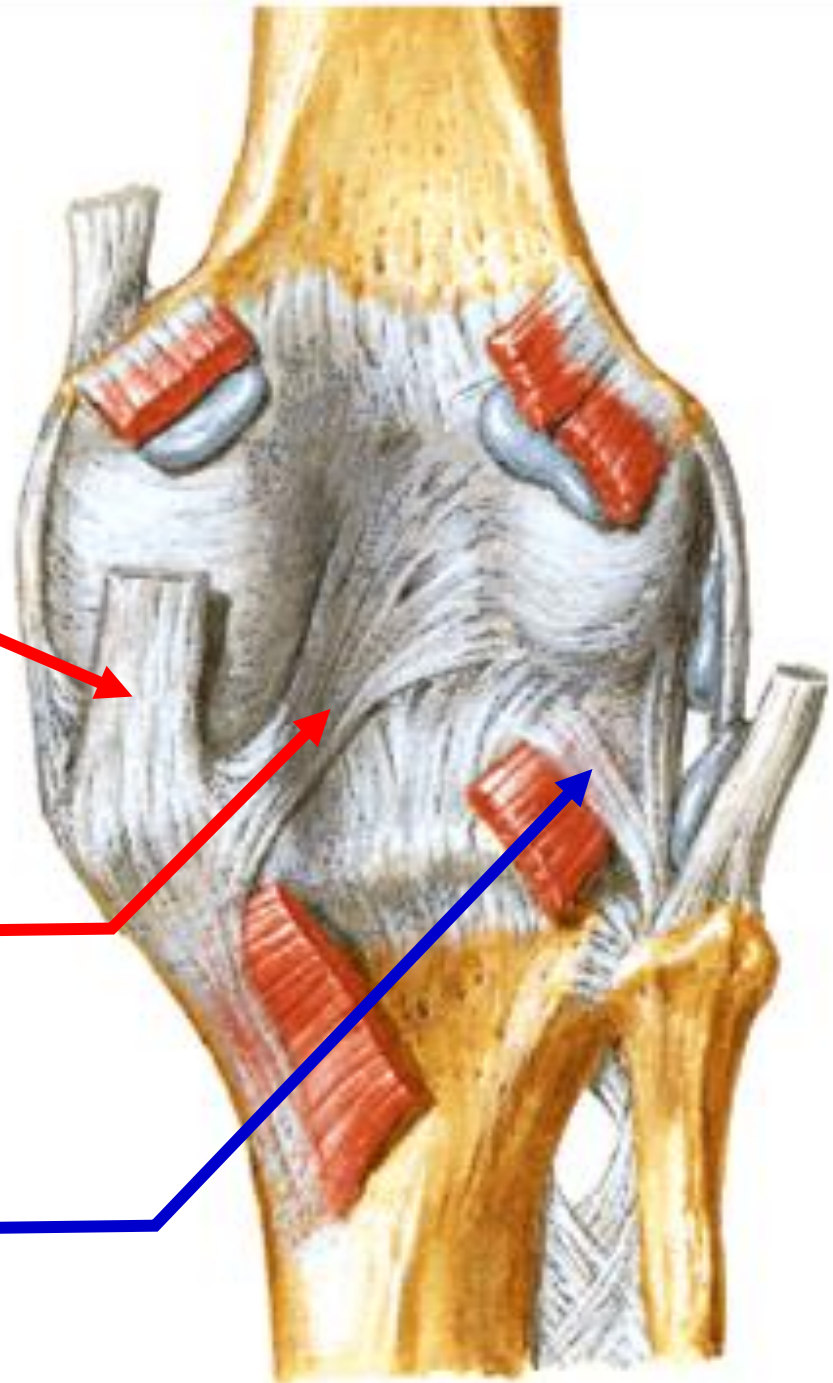
Semimembranosus tendon



Posterior oblique ligament



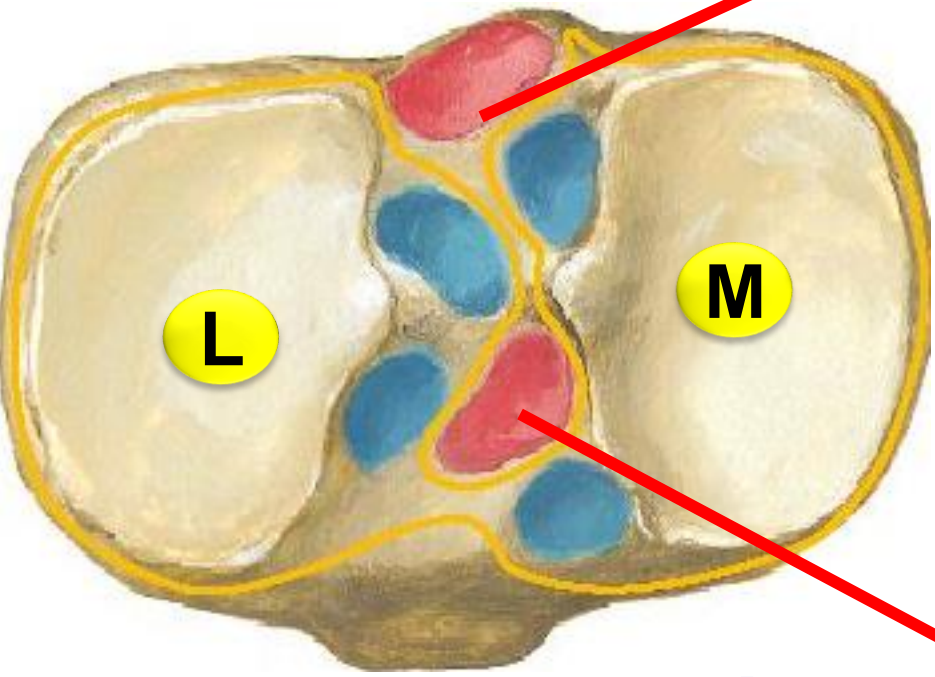
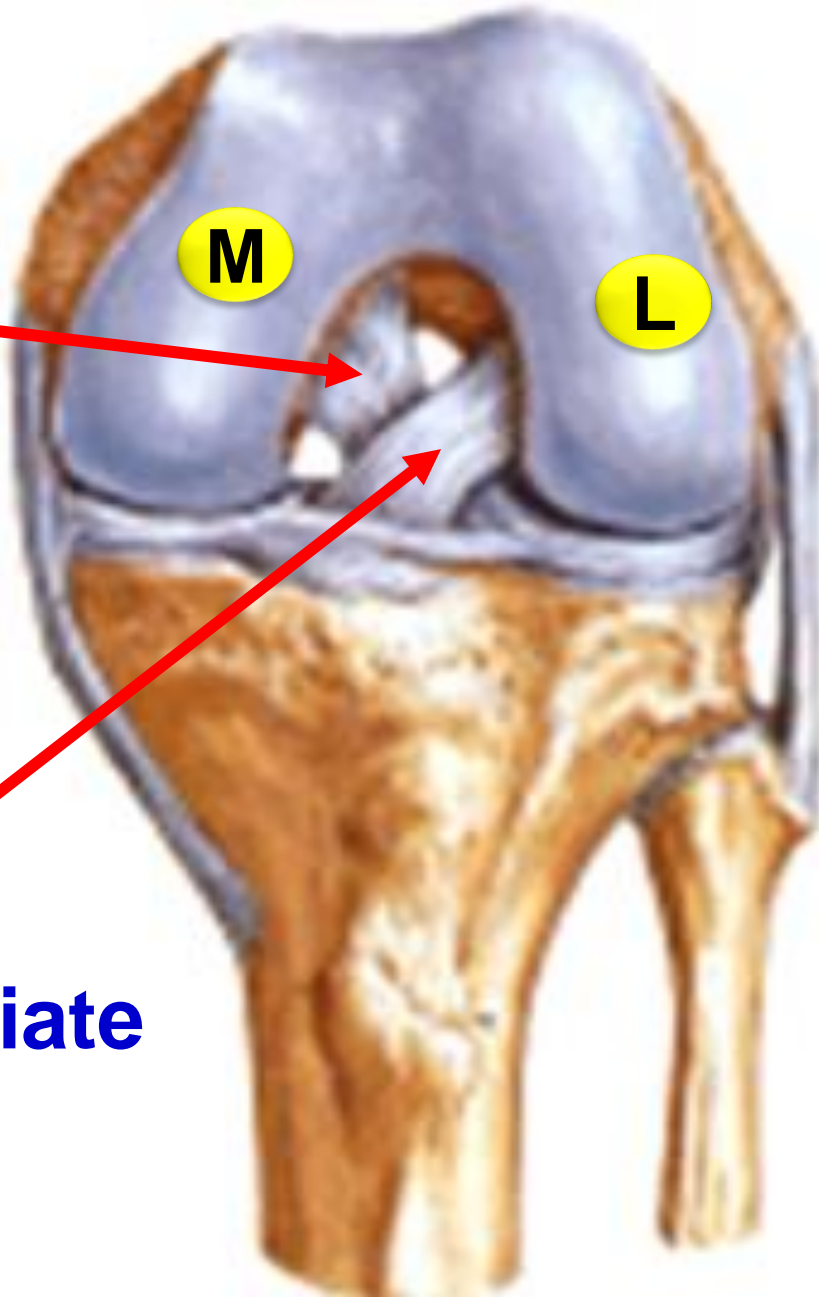
Arcuate popliteal ligament



dr_youssefhussein@yahoo.com

X-shaped figures

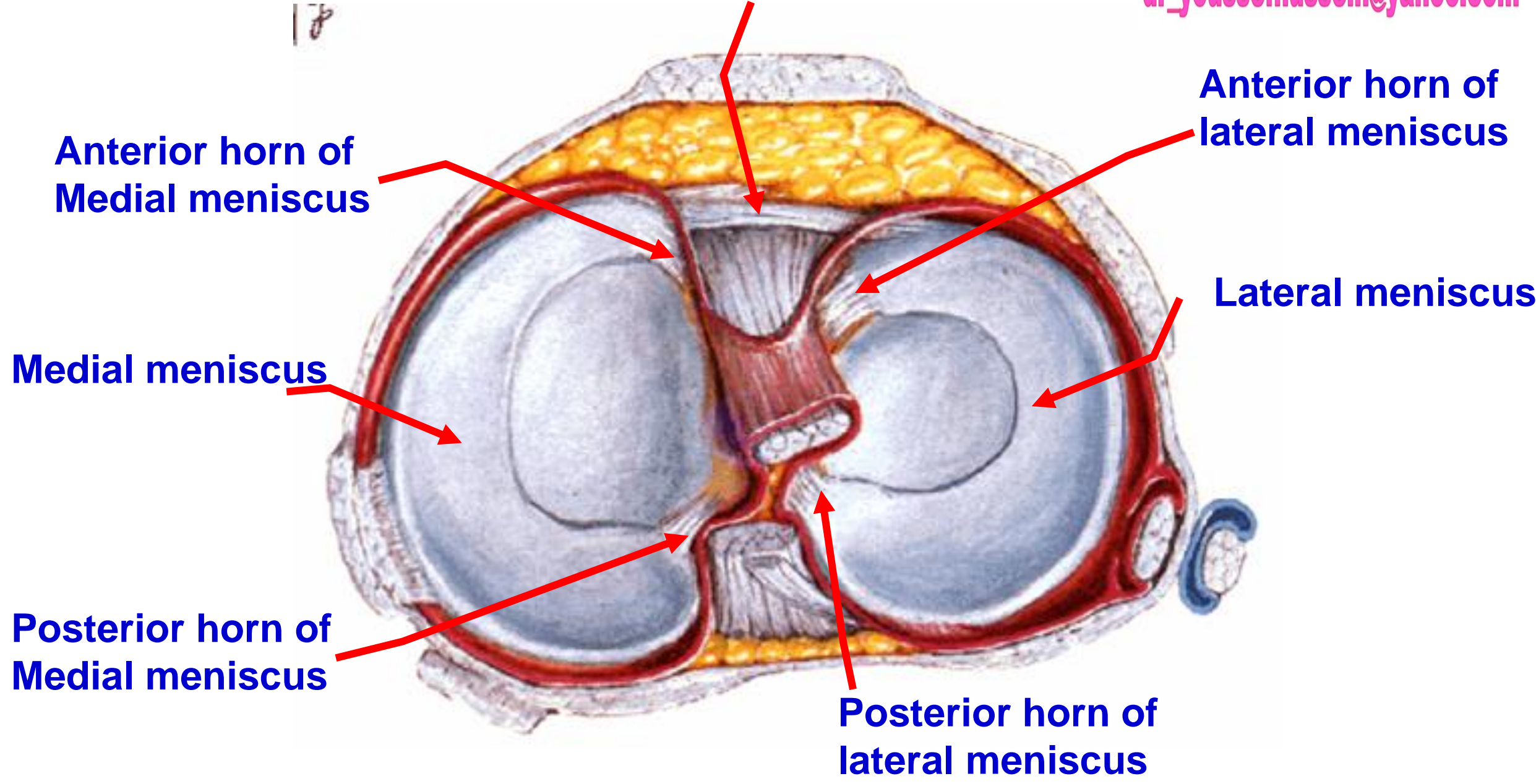
Posterior cruciate ligament



Anterior cruciate ligament

Intercondylar area of tibia

Transverse ligament



Anterior horn of Medial meniscus

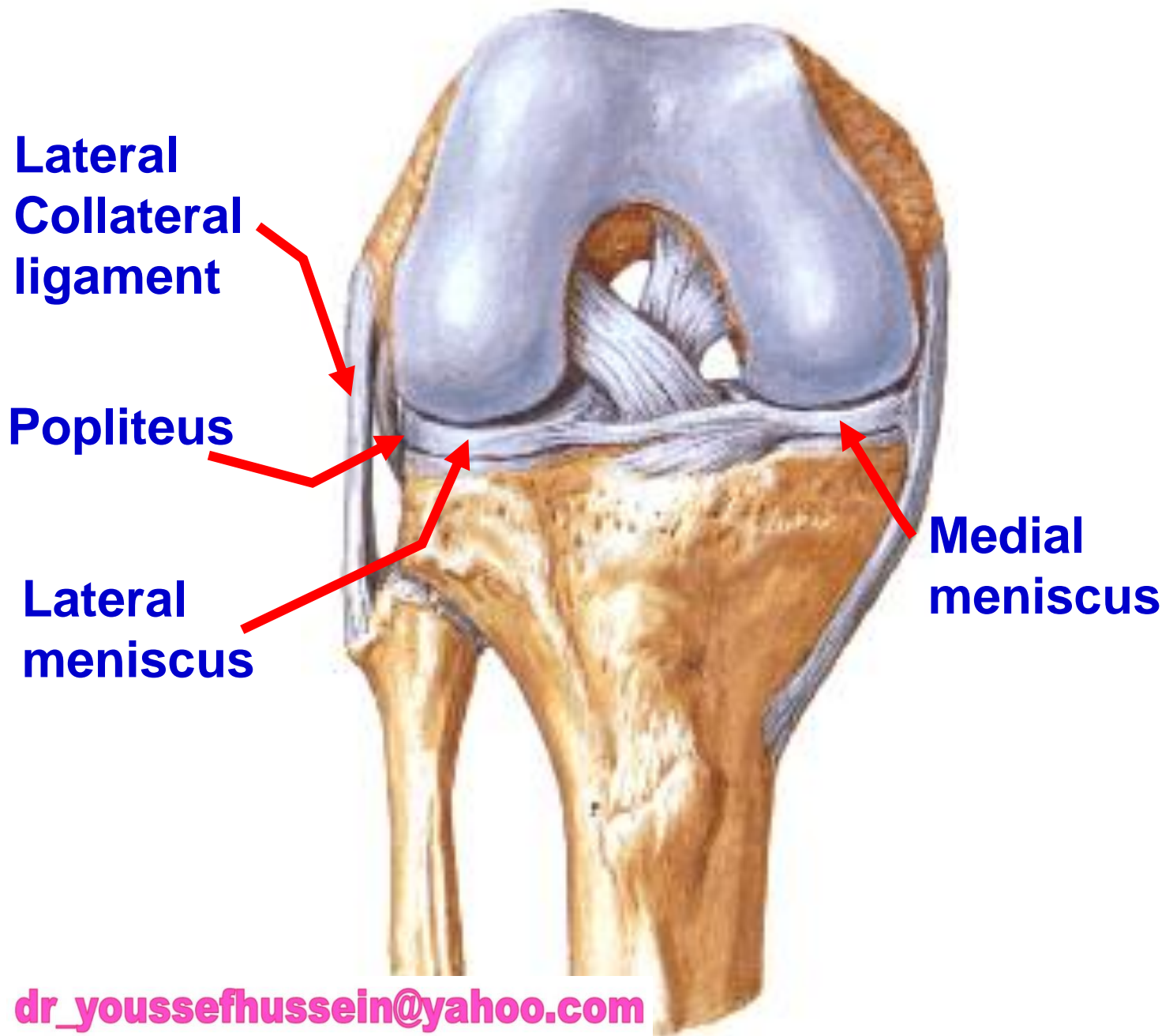
Anterior horn of lateral meniscus

Medial meniscus

Lateral meniscus

Posterior horn of Medial meniscus

Posterior horn of lateral meniscus



**Posterior cruciate
ligament**

**Posterior horn
of lateral meniscus**

**Posterior horn
of Medial
meniscus**

**Anterior horn of
Medial
meniscus**

**Anterior horn
of lateral meniscus**

**Anterior cruciate
ligament**

**Tibial tuberosity
(Anterior)**

