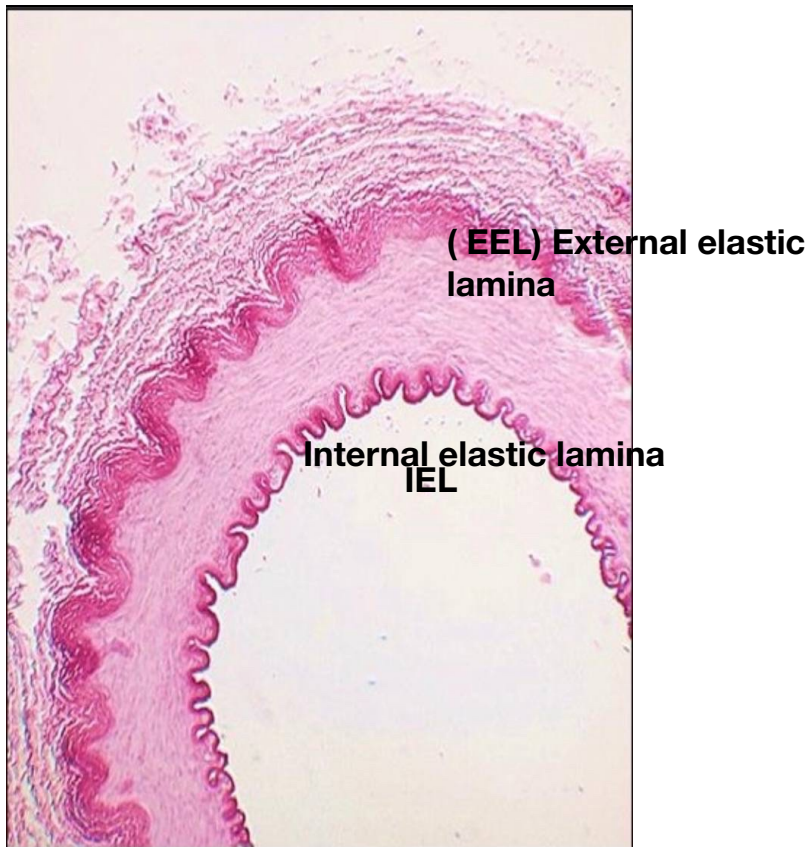
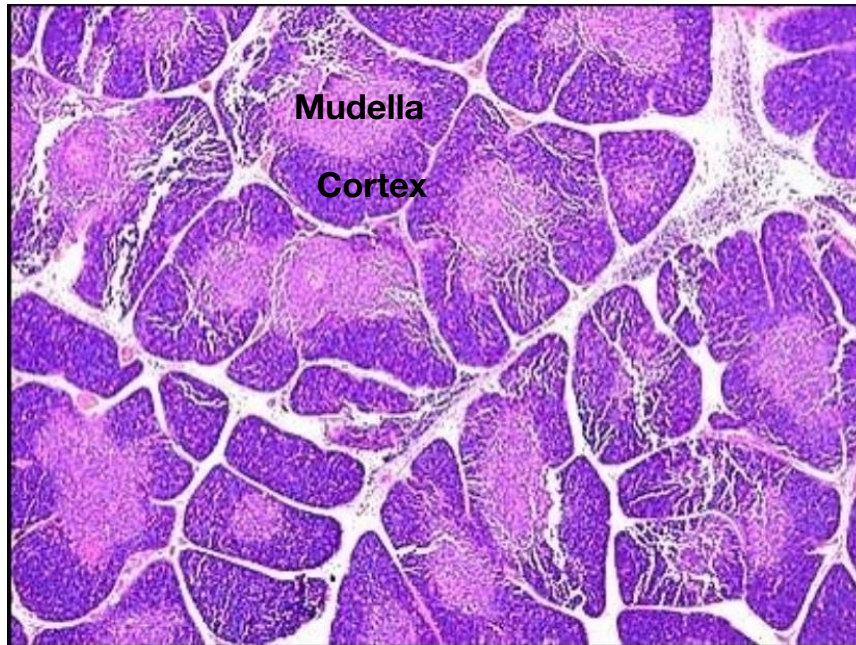


**Medium sized Muscular artery /Basilar artery**



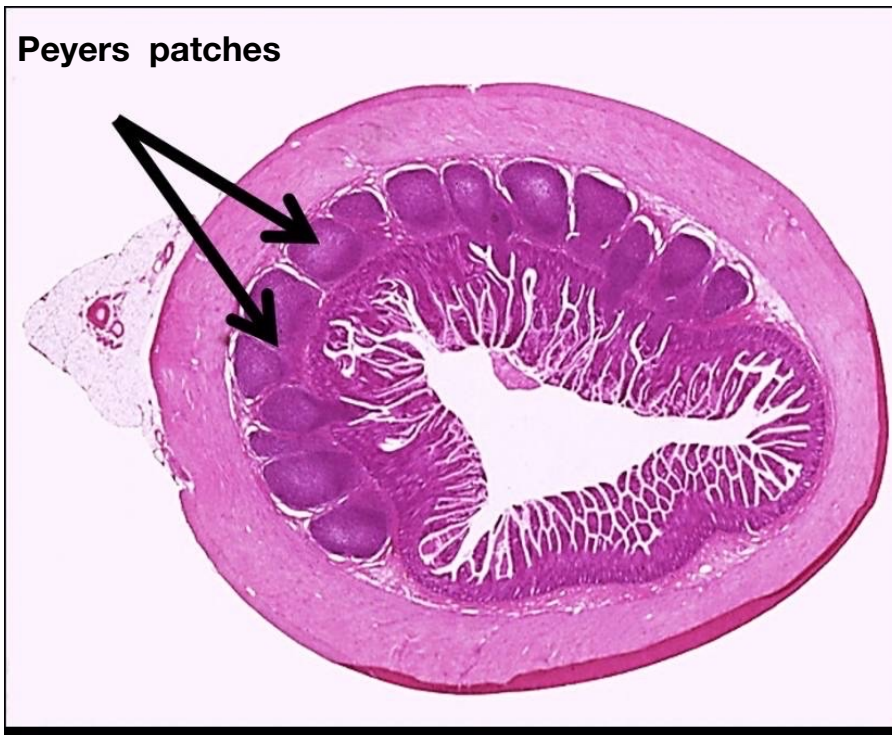
**Thymus/ lymphoid organ / gland**





Capillary in skeletal muscle

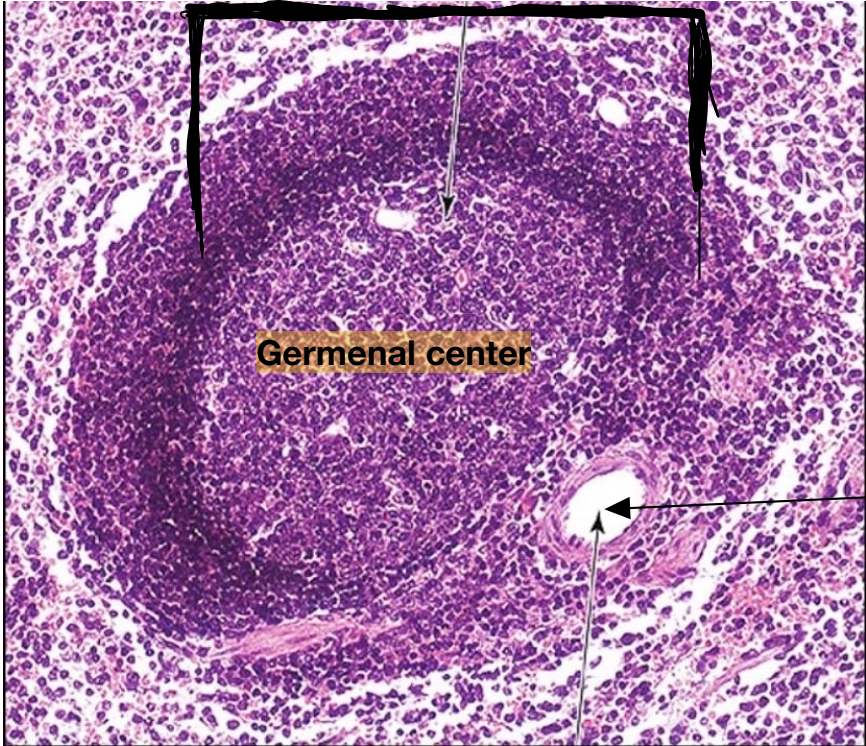
MALT / mucosa associated lymphoid tissue/ ileum



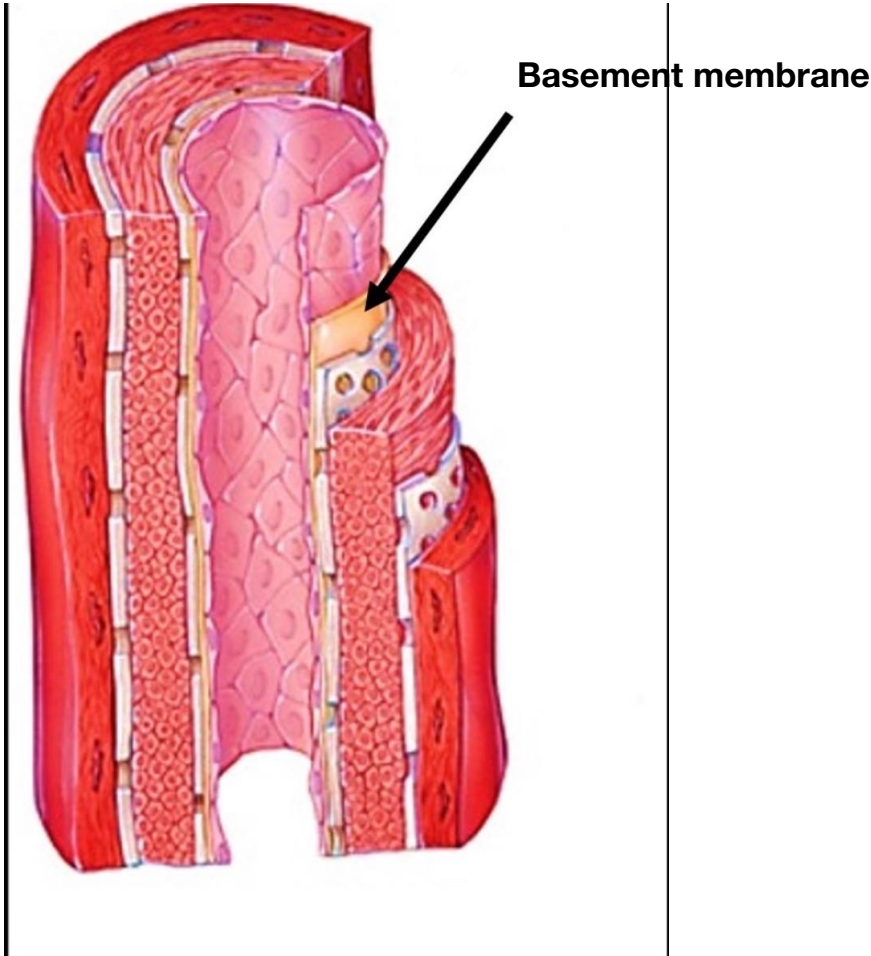


# Splenic nodule

White pulp composed of lymphoid aggregates surrounded with red pulp



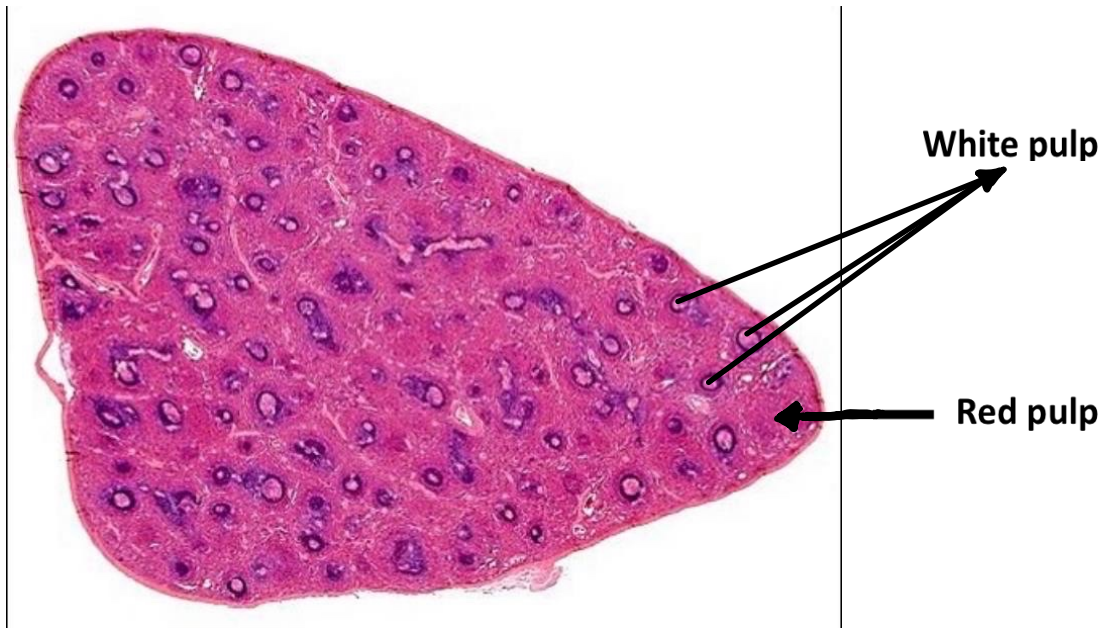
Central Arteriole/  
follicular arterioles



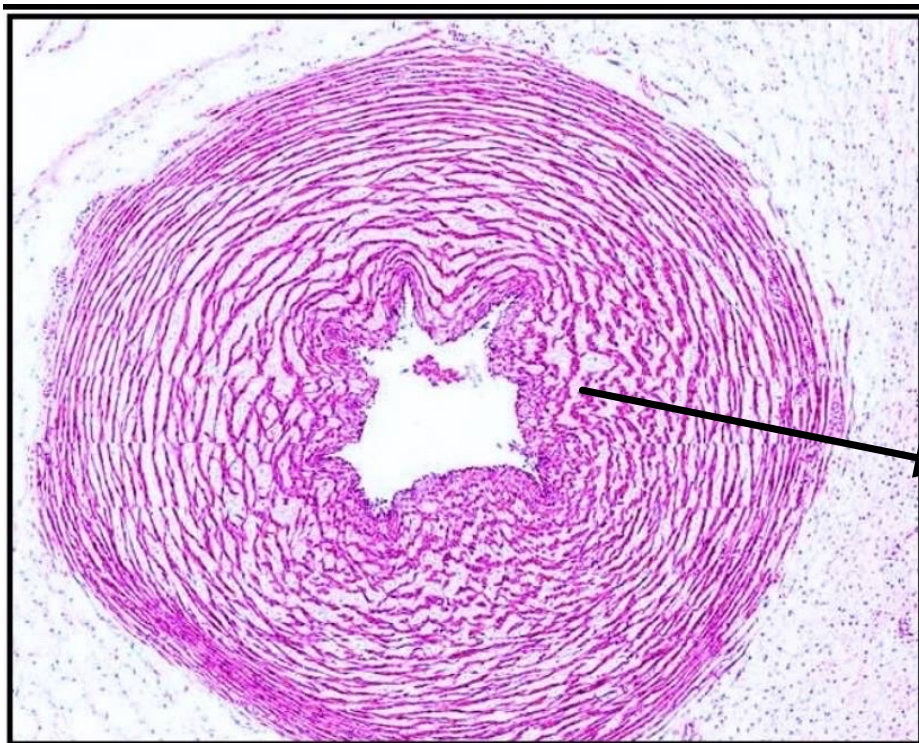
Basement membrane







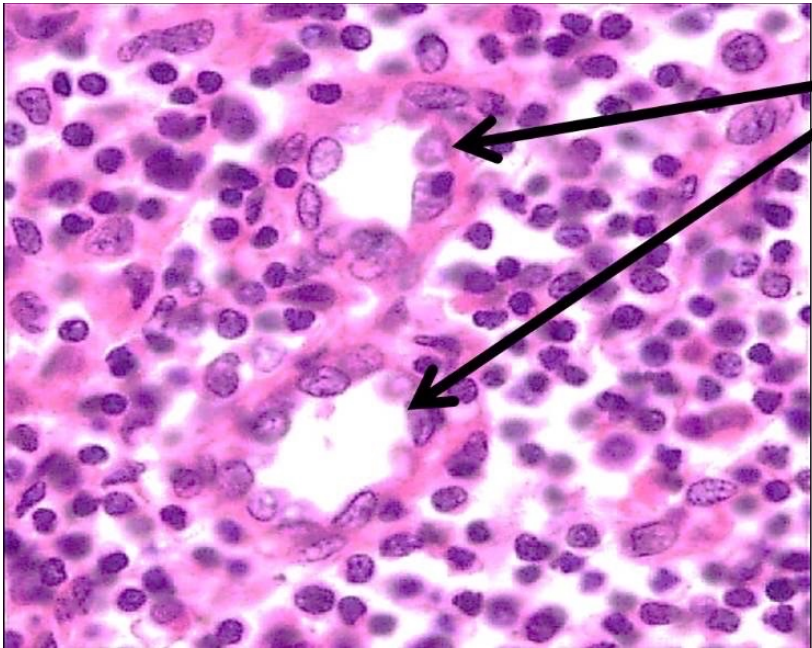
Spleen



Adventitia  
formed of  
Mucoid  
C.T

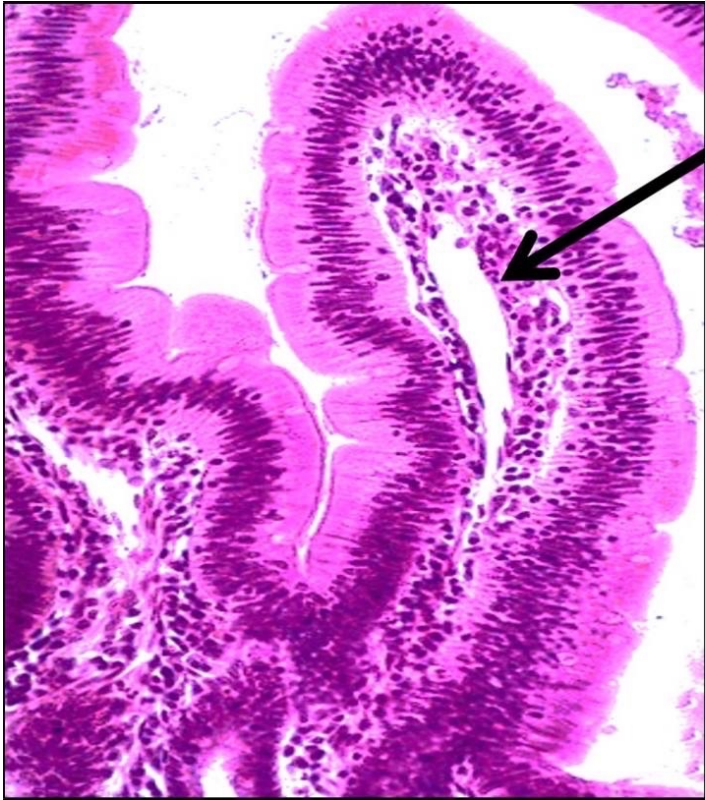
Umbilical cord /umbilical artery

The lining epithelium is cuboidal rather than the usual flat squamous



High endothelial venule

Small intestine/Villus / lacteal

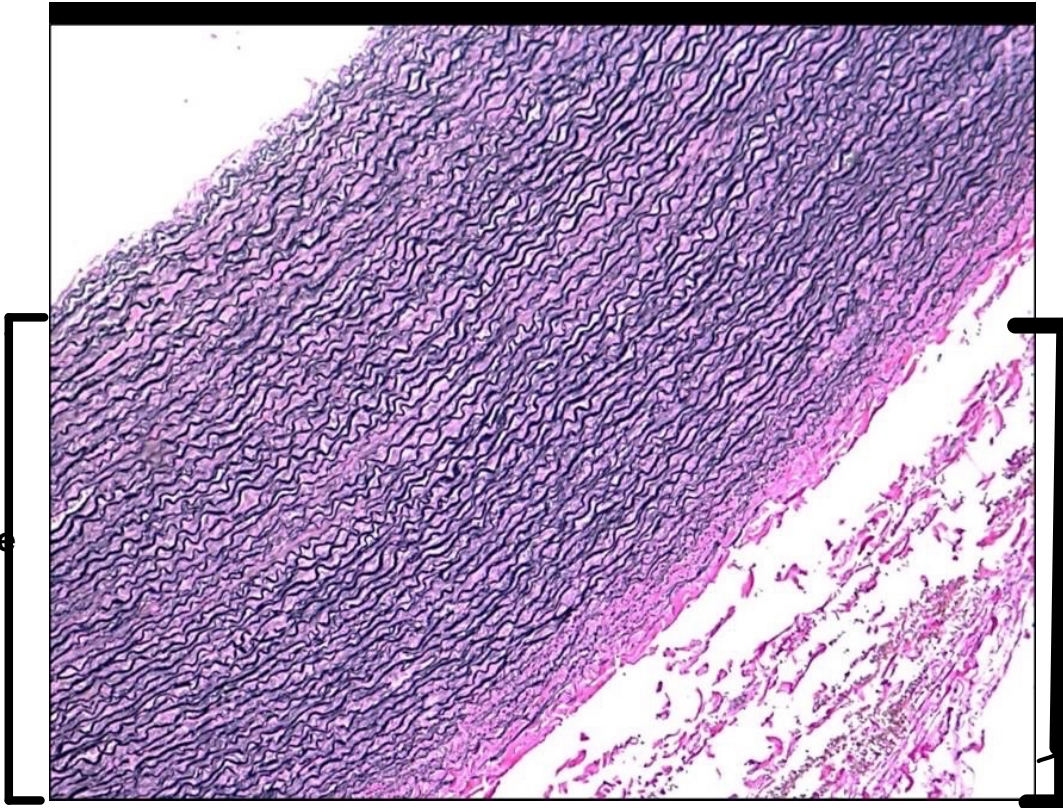


Lacteal  
(Lymphatic capillary)



**Aorta/ large Elastic arteries**

**Tunica  
media  
contains  
elastic  
membrane  
& fibers**



**Tunica Adventitia**

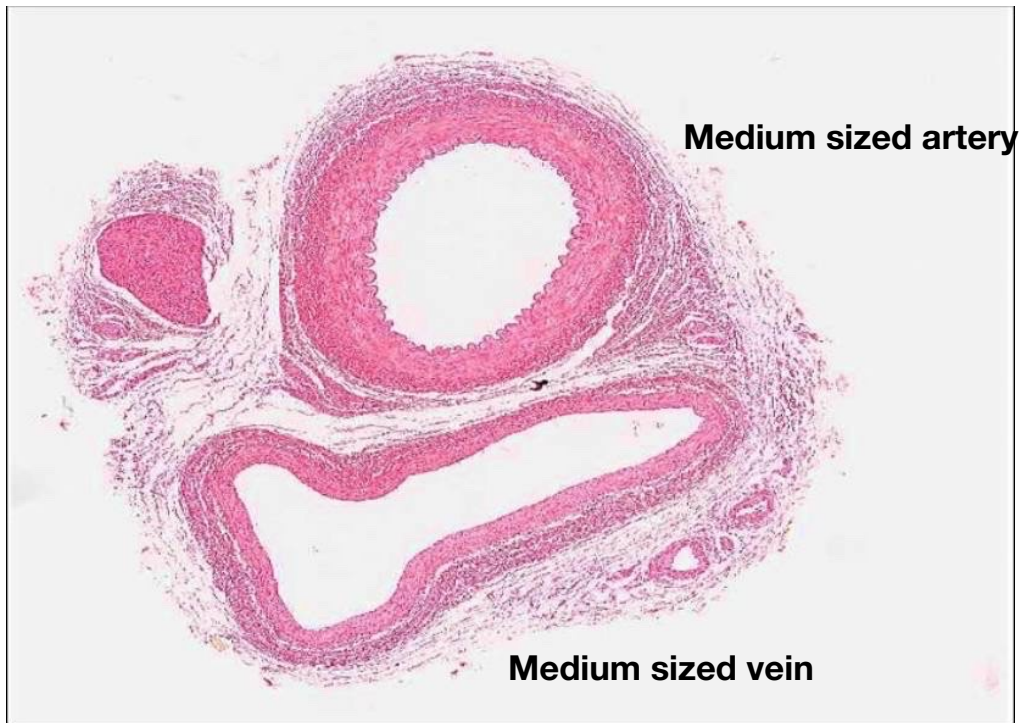
**MALT / Appendix**



**Lymphatic follicles**



## Medium sized artery and vein



## Arteriole / venule

