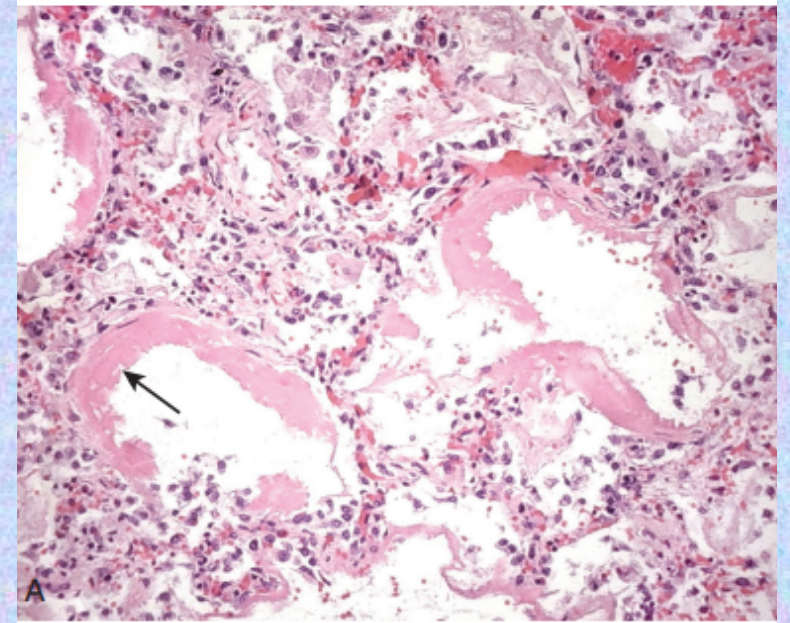


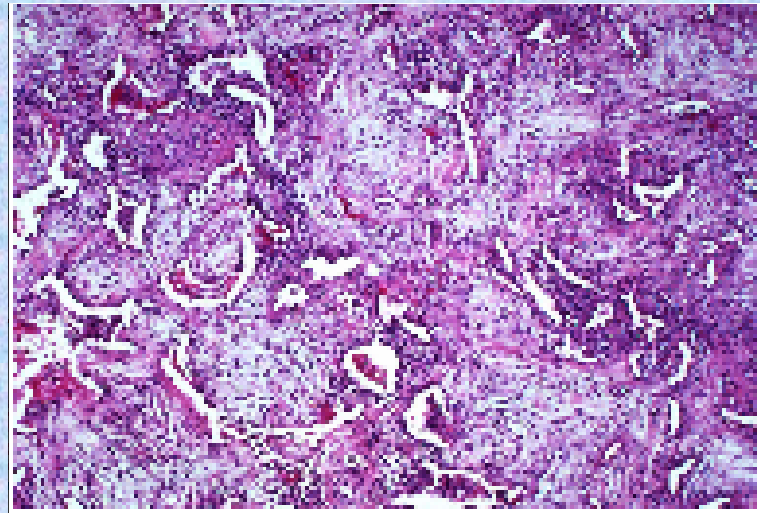
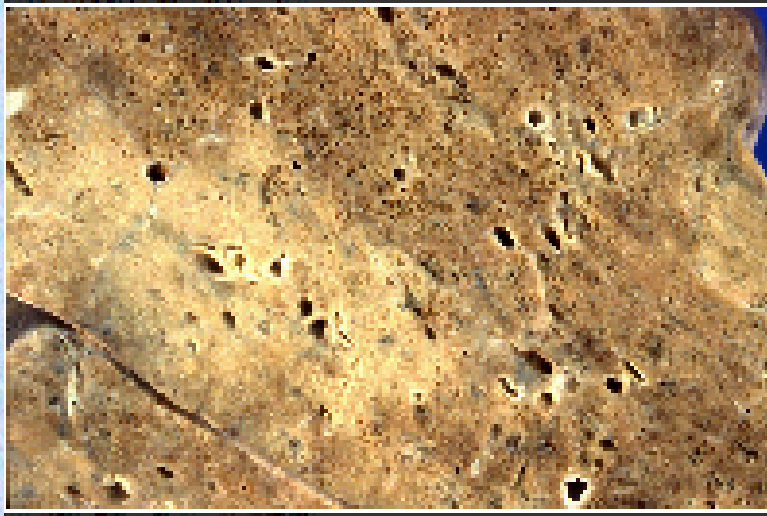
Pathology lab-1

Acute ARDS

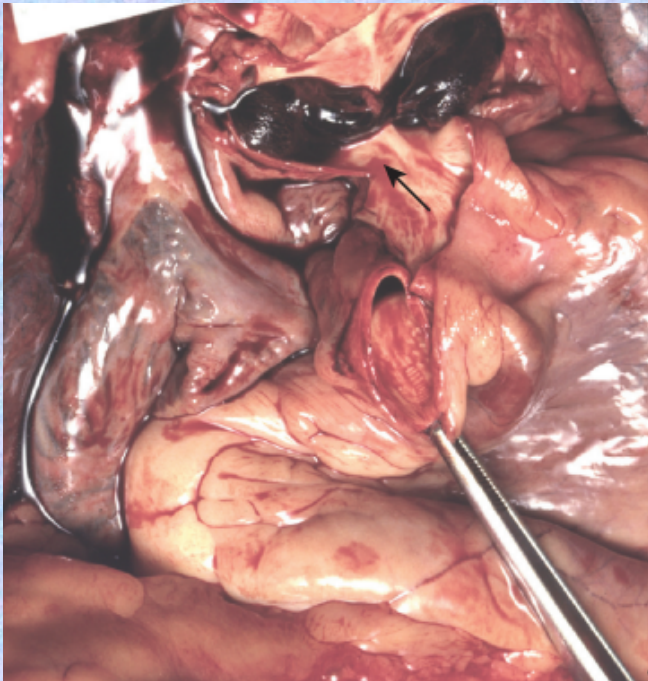
Acute ARDS



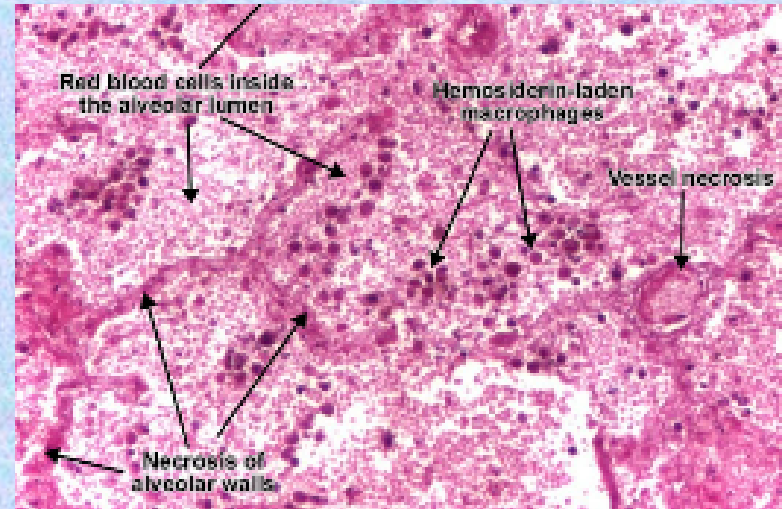
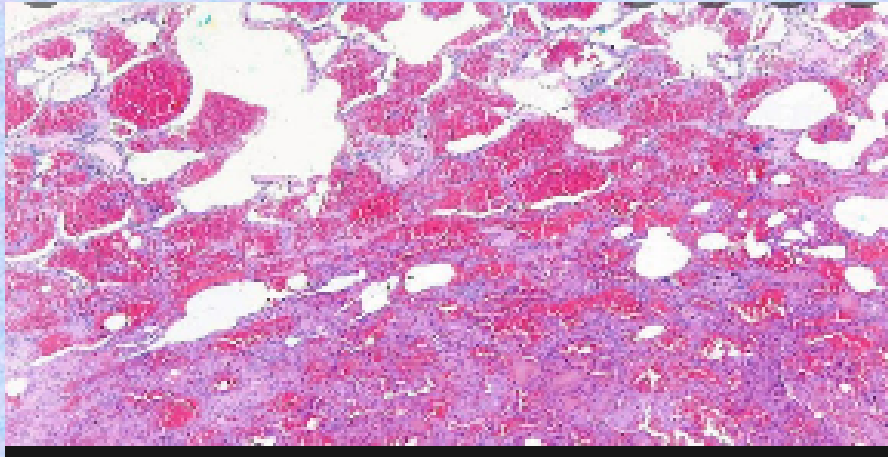
ARDS-organizing stage



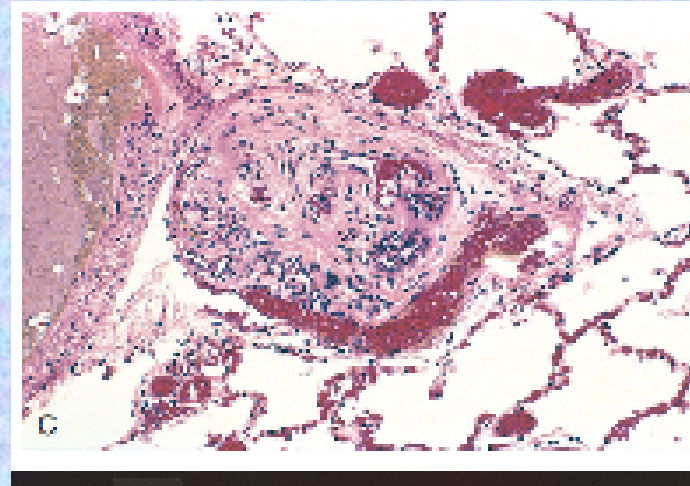
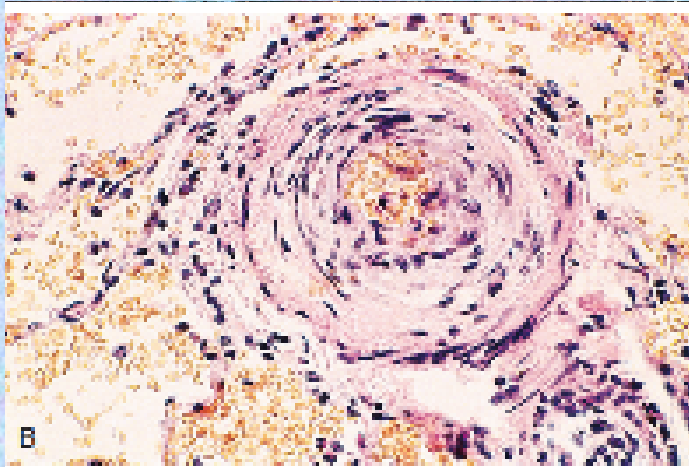
saddle embolus.



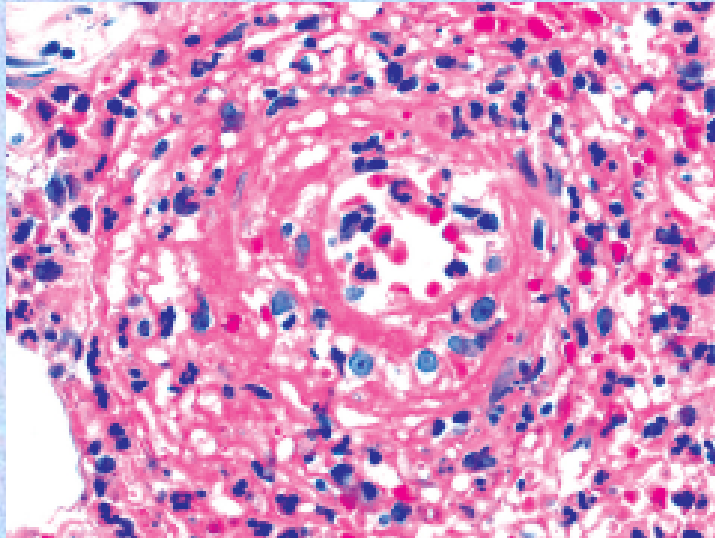
pulmonary embolism



pulmonary hypertension

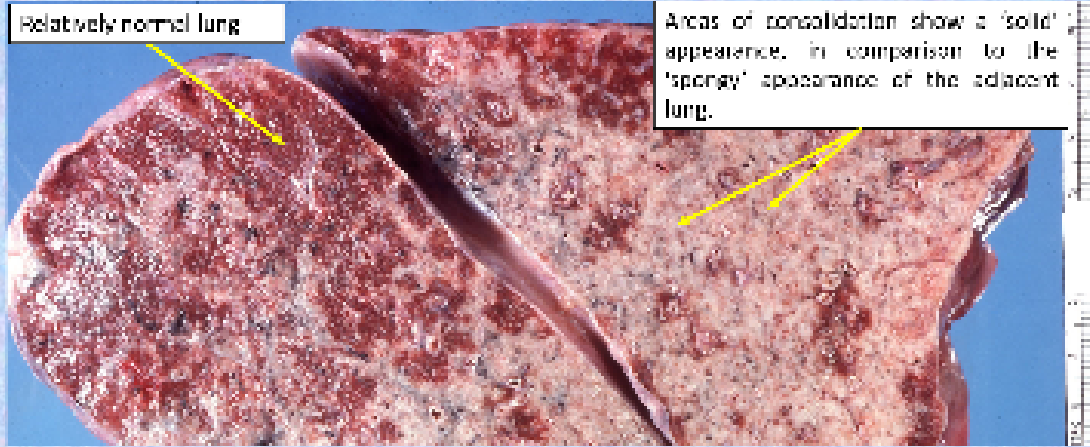


Pseudomonas vasculitis

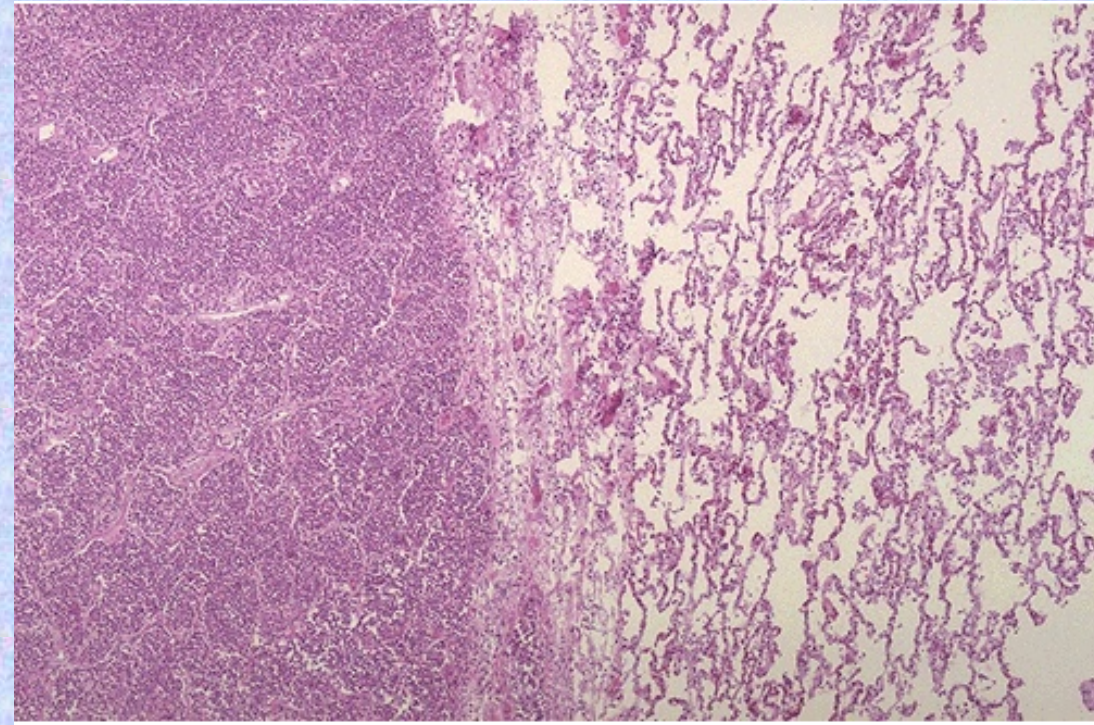


MORPHOLOGY OF PNEUMONIA

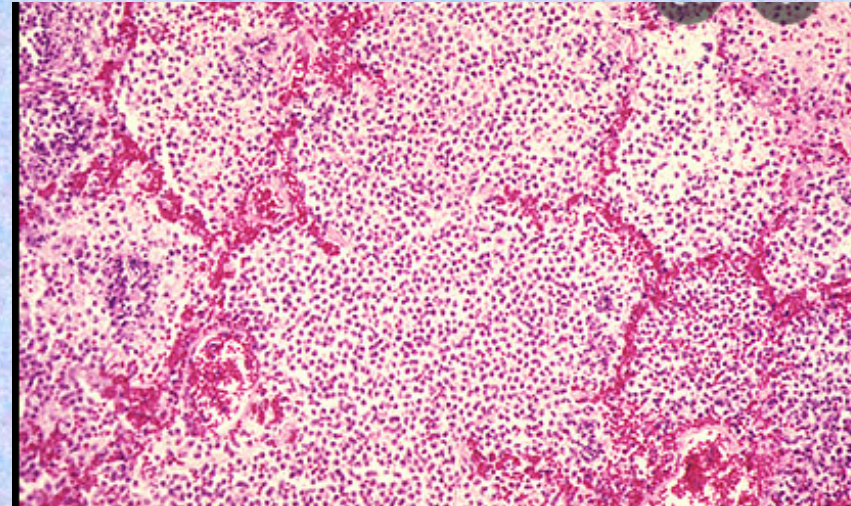
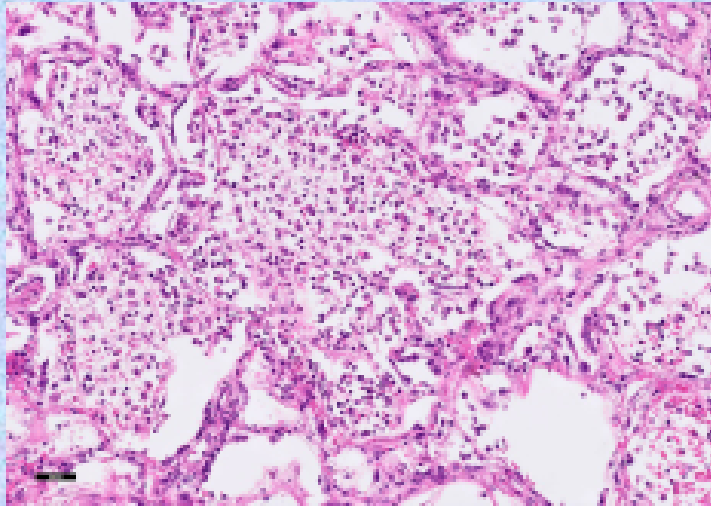
Relatively normal lung

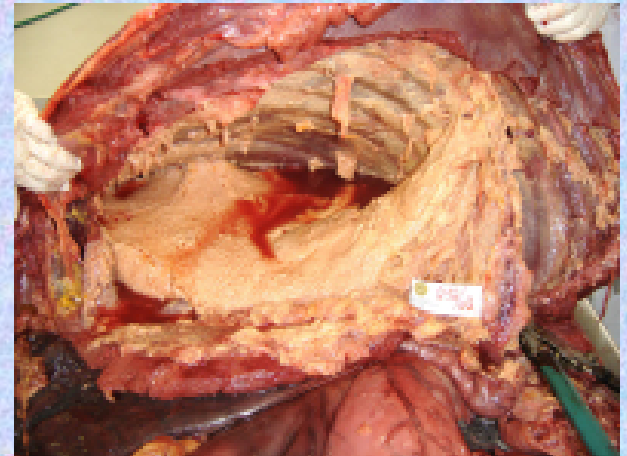
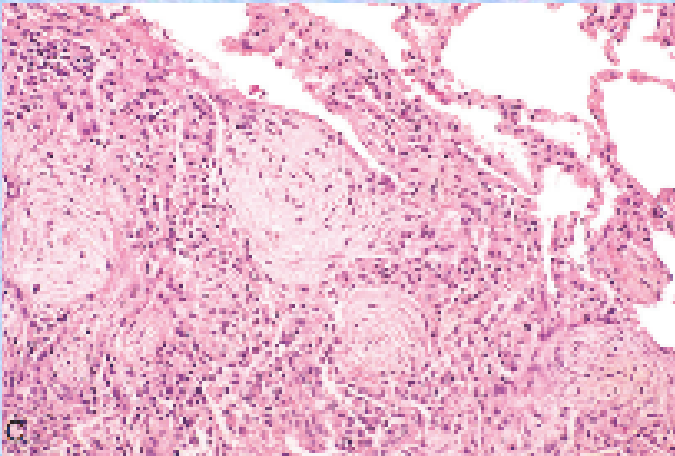
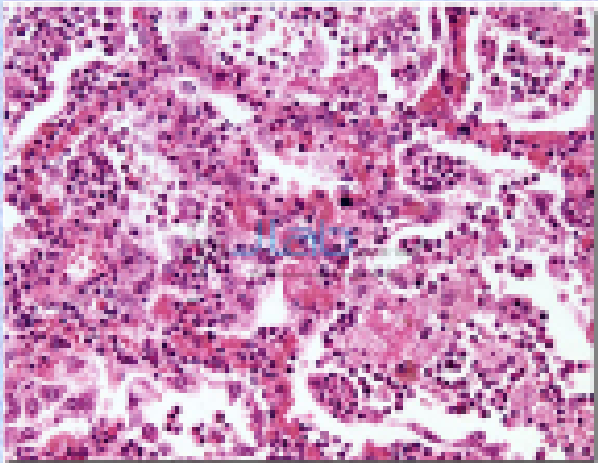


Areas of consolidation show a 'solid' appearance, in comparison to the 'spongy' appearance of the adjacent lung.

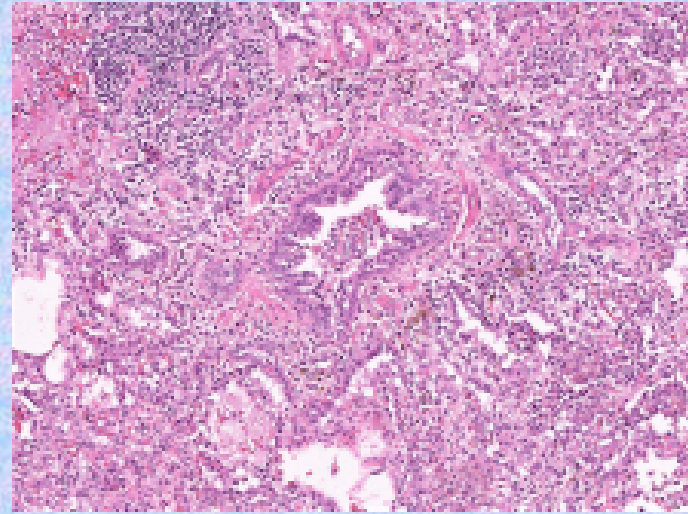
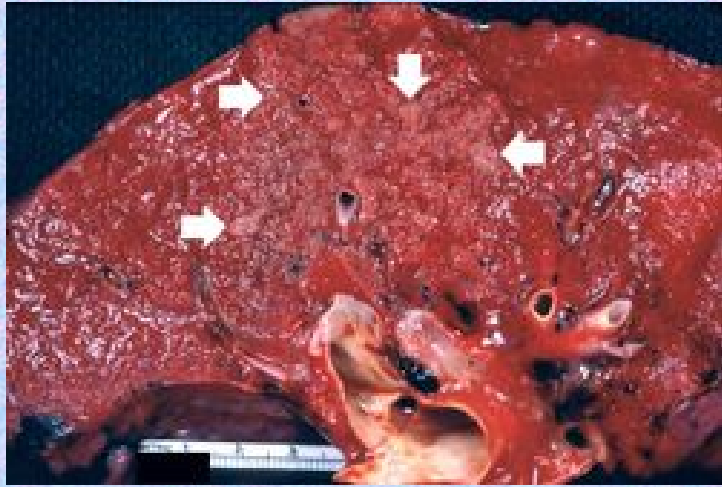


lobar pneumonia

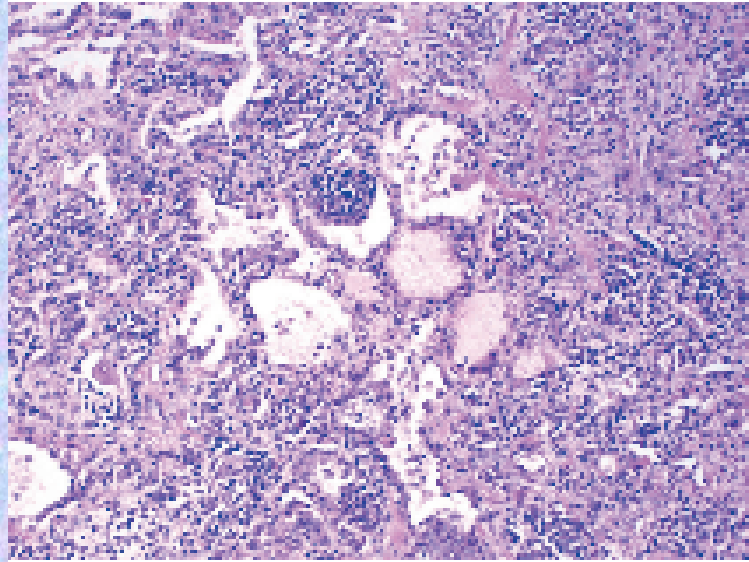




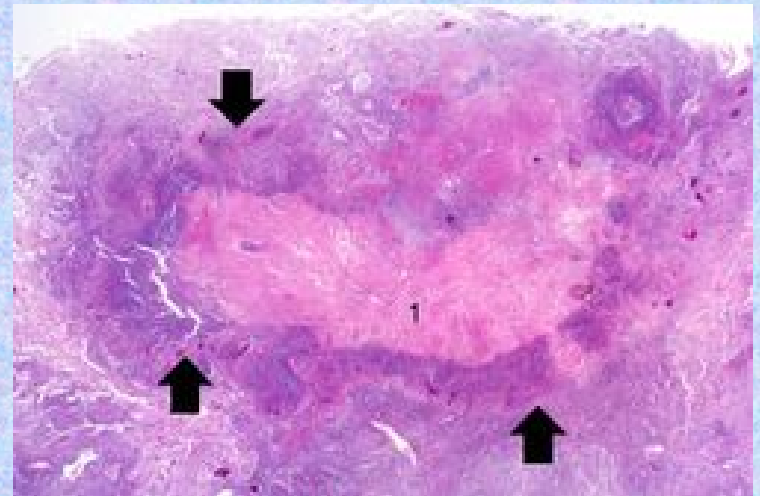
bronchopneumonia



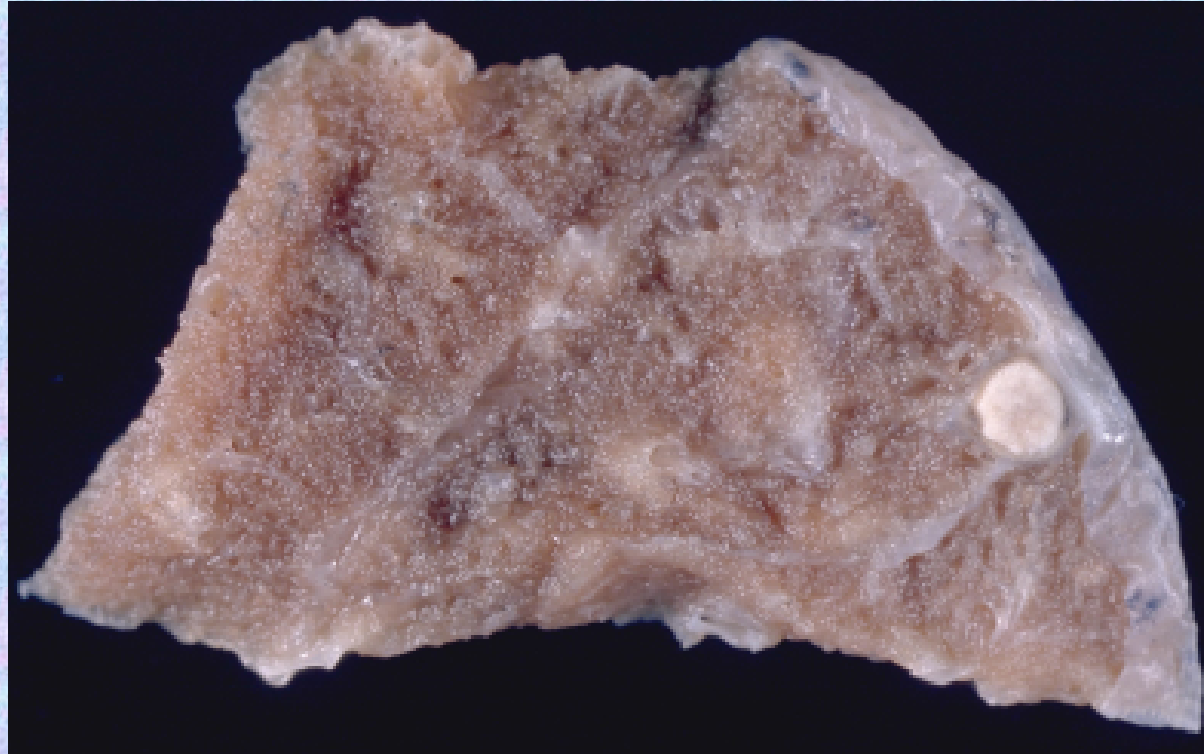
Viral pneumonia



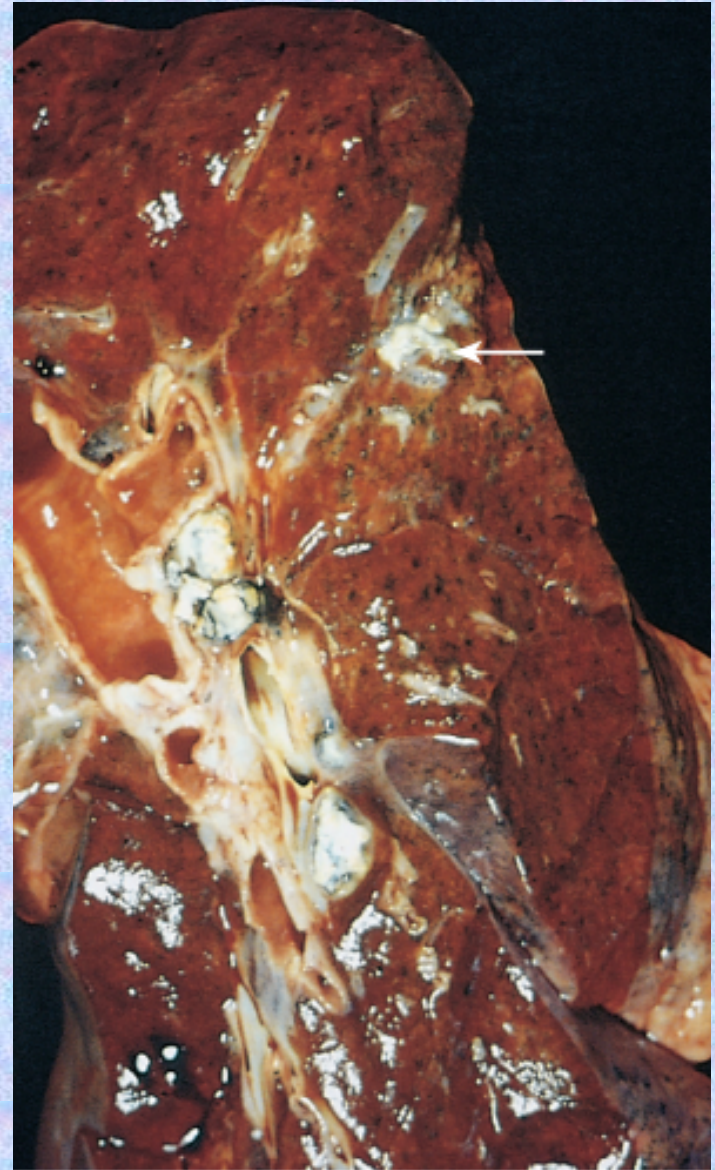
LUNG ABSCESS

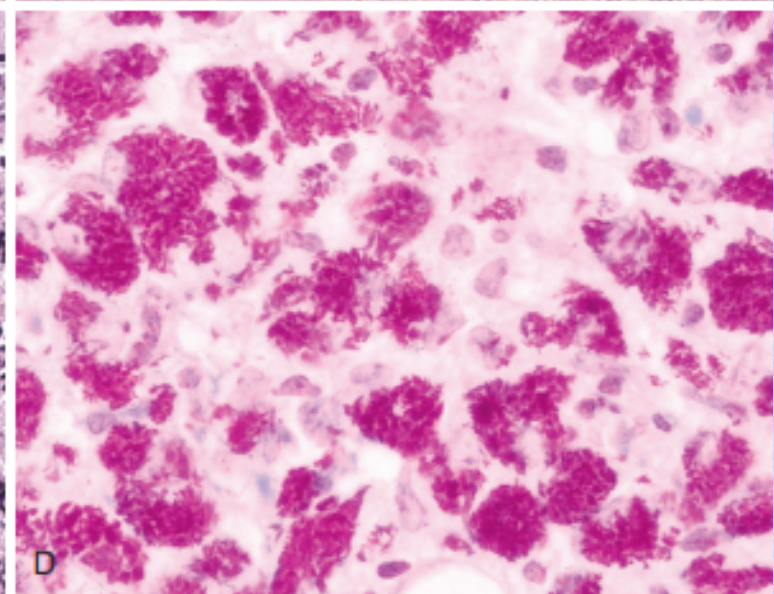
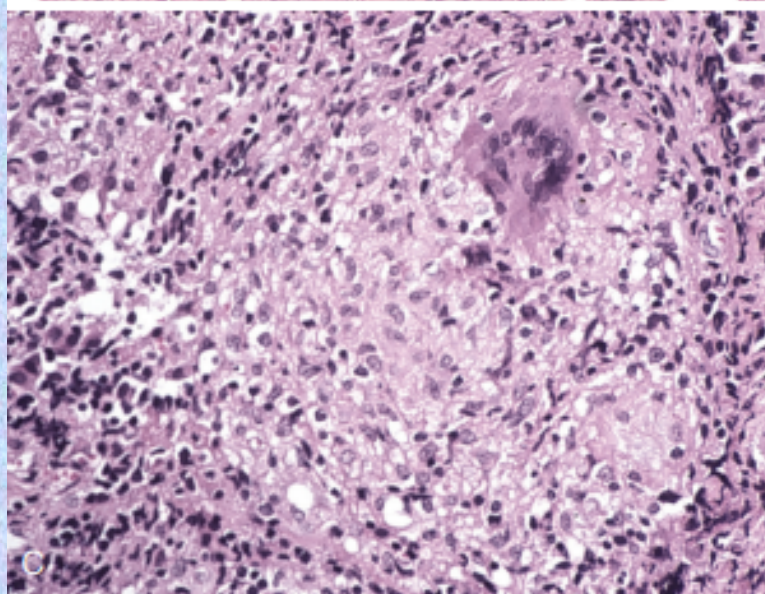
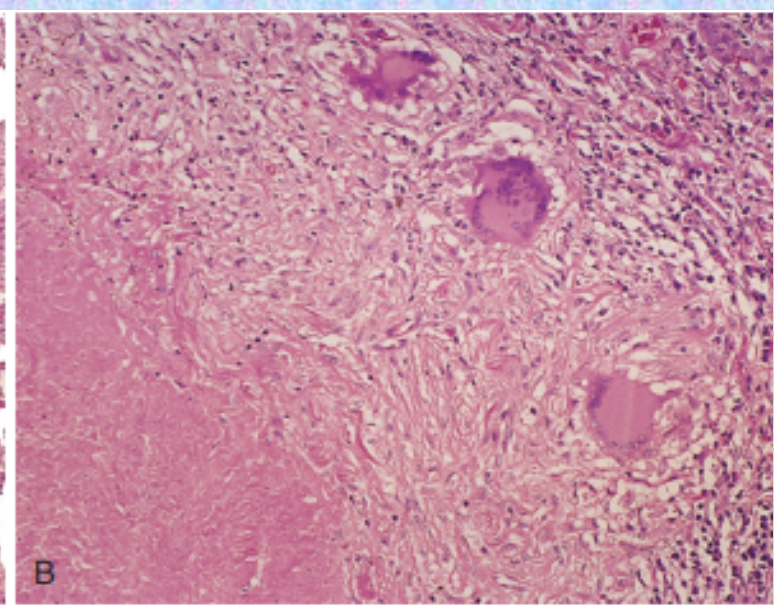
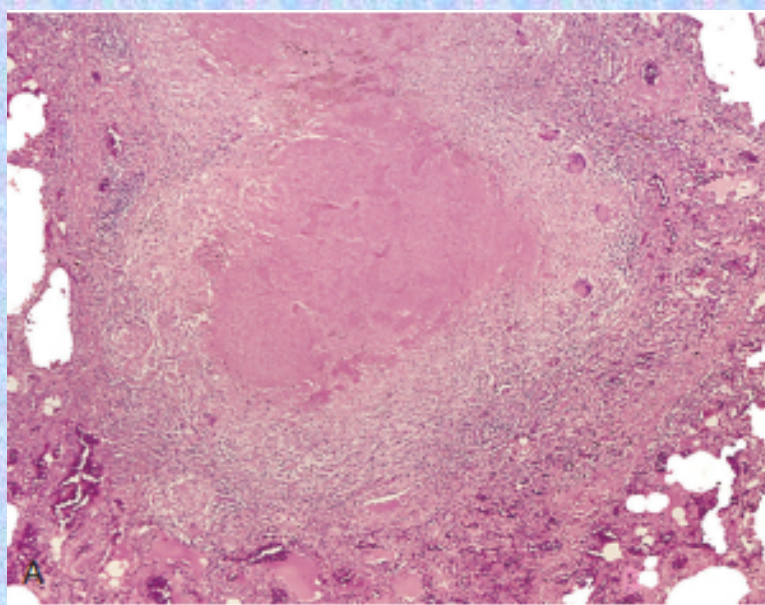


fibrocalcific nodule at the site of the infection

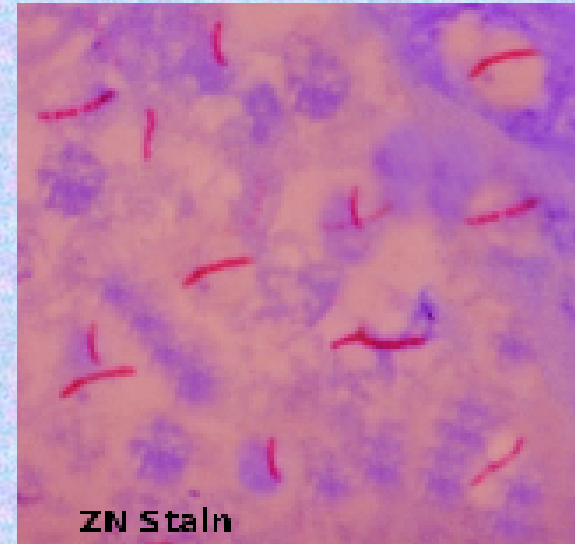
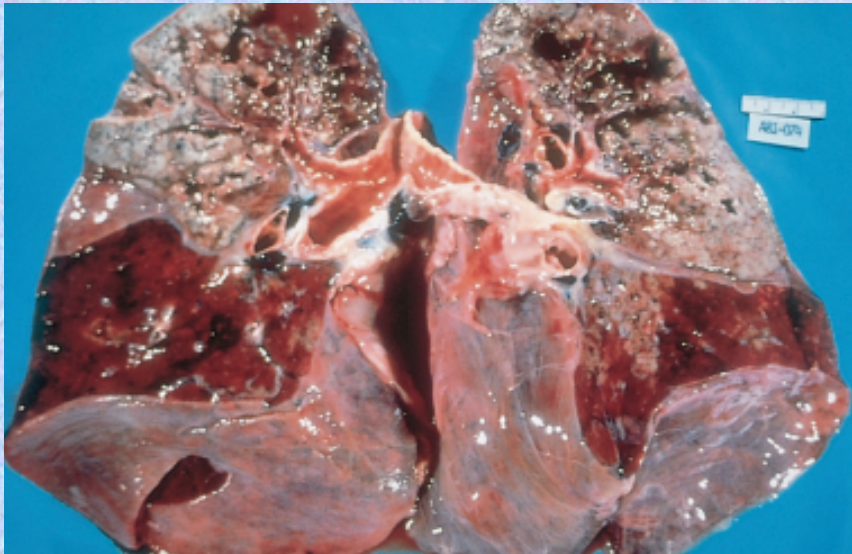


Ghon complex:





Secondary TB



emphysema

